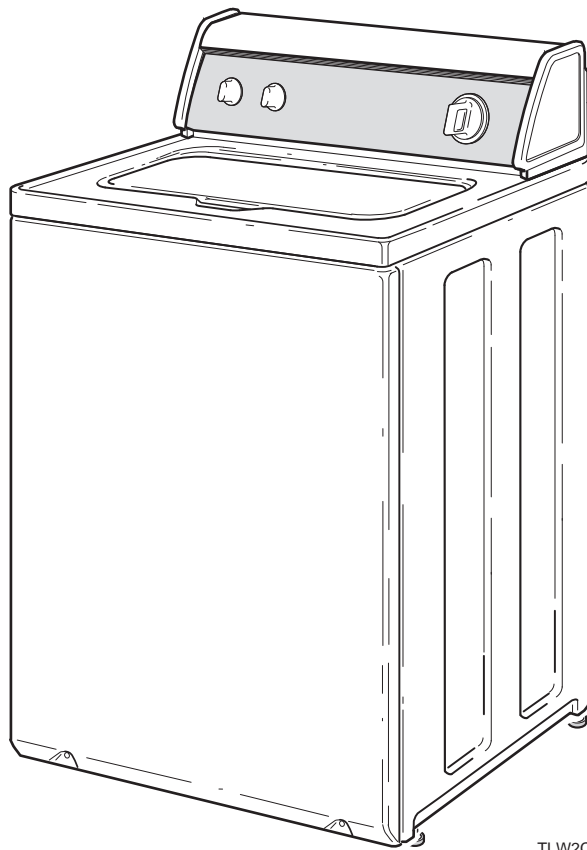


Home Topload Washers

Refer to Page 5 for Model Numbers



TLW2C

Table of Contents

Section 1 – Safety Information	3
Section 2 – Introduction	5
Model Identification	5
How Your Washer Works	6
Customer Service.....	8
Nameplate Location.....	8
Section 3 – Troubleshooting.....	9
1. Low Water Level on High Fill Setting.....	9
2. Clicking Noise During Operation on NEWLY Installed Units	9
3. Motor Hums	10
4. No Hot Water	11
5. No Cold Water	12
6. No Warm Water	13
7. Slow Hot Fill or Warm Fill is Too Cold	14
8. Water Fill Does Not Stop At Proper Level	15
9. Washer Fills, Motor Hums.....	16
10. Timer Does Not Advance	17
11. Motor Does Not Run.....	18
12. No Agitation.....	19
13. Constant Agitation	20
14. Washer Overheats, Cycles On Motor Thermal Protector, Switch Actuator Kicks In And Out	21
15. Slow Spin Or No Spin.....	22
16. Constant Spin	23
17. Washer Stops In Cycle; Quits After A Couple Loads; Is Intermittent	24
18. Washer Is Locked Up Or Binding.....	25
19. Outer Tub Does Not Empty	26
20. Excessive Vibration	27
21. Water Leaking From Outer Tub.....	28
Section 4 – Control Troubleshooting	29
Model AUNA11SP111TW01	29
22. Error Mode.....	29
23. Washer Will Not Fill (Pressure Switch Diagnostic)	30
24. Washer Will Not Fill (Mixing Valve Diagnostic)	32
25. Washer Over Fills (Pressure Switch Open)	34
26. No Agitation – Low and High Speed	36
27. Washer Will Not Spin – Low Speed.....	38
28. Washer Will Not Spin – High Speed	40
Section 5 – Adjustments	42
29. Leveling Legs.....	42
30. Belt (Agitate And Spin)	42

Section 6 – Test Procedures	43
31. Motor Test Procedure.....	43
32. Mixing Valve Solenoid Test Procedure.....	44
33. Temperature Switch Test Procedure	44
Section 7 – Cycle Sequence Charts.....	45
Section 8 – Internal Wiring of Washer Motor Switch.....	55

Section 1

Safety Information

Throughout this manual and on machine decals, you will find precautionary statements (“CAUTION,” “WARNING” and “DANGER”) followed by specific instructions. These precautions are intended for the personal safety of the operator, user, servicer, and those maintaining the machine.

DANGER

Danger indicates an imminently hazardous situation that, if not avoided, will cause severe personal injury or death.

WARNING

Warning indicates a hazardous situation that, if not avoided, could cause severe personal injury or death.

CAUTION

Caution indicates a hazardous situation that, if not avoided, may cause minor or moderate personal injury or property damage.

Additional precautionary statements (“IMPORTANT” and “NOTE”) are followed by specific instructions.


IMPORTANT


The word “IMPORTANT” is used to inform the reader of specific procedures where minor machine damage will occur if the procedure is not followed.


NOTE


The word “NOTE” is used to communicate installation, operation, maintenance or servicing information that is important but not hazard related.

In the interest of safety, some general precautions relating to the operation of this machine follow.

	<h2>WARNING</h2>
<ul style="list-style-type: none">• Failure to install, maintain and/or operate this product according to the manufacturer’s instructions may result in conditions which can produce serious injury, death and/or property damage.• Do not repair or replace any part of the product or attempt any servicing unless specifically recommended or published in this Service Manual and unless you understand and have the skills to carry out the servicing.• Whenever ground wires are removed during servicing, these ground wires must be reconnected to ensure that the product is properly grounded and to reduce the risk of fire, electric shock, serious injury or death. <p>W006R2</p>	

	WARNING
<p>To reduce the risk of electric shock, fire, explosion, serious injury or death:</p> <ul style="list-style-type: none">• Disconnect electric power to the washer before servicing.• Never start the washer with any guards/panels removed.• Whenever ground wires are removed during servicing, these ground wires must be reconnected to ensure that the washer is properly grounded.	
W003	

	WARNING
<p>Repairs that are made to your products by unqualified persons can result in hazards due to improper assembly or adjustments subjecting you, or the inexperienced person making such repairs, to the risk of serious injury, electrical shock, or death.</p>	
W007	

	WARNING
<p>If you or an unqualified person perform service on your product, you must assume the responsibility for any personal injury or property damage which may result. The manufacturer will not be responsible for any injury or property damage arising from improper service and/or service procedures.</p>	
W008	

NOTE: The **WARNINGS** and **IMPORTANT INSTRUCTIONS** appearing in this manual are not meant to cover all possible conditions and situations that may occur. Common sense, caution and care must be exercised when installing, maintaining or operating the washer.

Always contact your dealer, distributor, service agent or the manufacturer about any problems or conditions you do not understand.

Locating an Authorized Servicer

Alliance Laundry Systems is not responsible for personal injury or property damage resulting from improper service. Review all service information before beginning repairs.

Warranty service must be performed by an authorized technician, using authorized factory parts. If service is required after the warranty expires, Alliance Laundry Systems also recommends contacting an authorized technician and using authorized factory parts.

Section 2

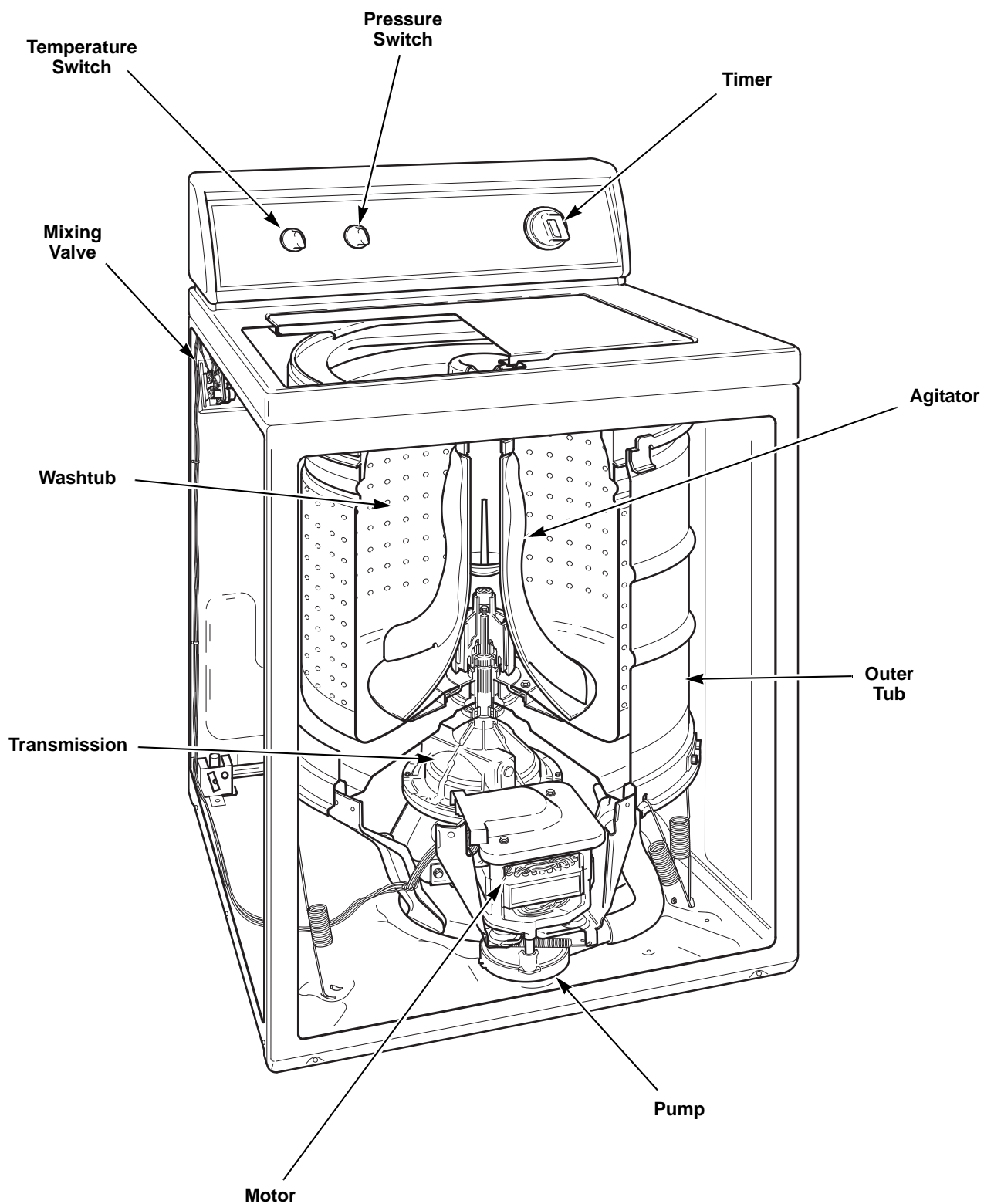
Introduction

Model Identification

Information in this manual is applicable to these washer models.

AWNA11SP111TW01	AWN432SP113TW04	AWS48NW
AWN311SP111TW01	AWN542SP111TW01	AWS51NW
AWN402PP111TW01	AWN542SP111TWAH	AWS52NW
AWN412SP111TW01	AWS01NW	AWS53NW
AWN432SP111TW01	AWS17NW	AWS75NW
AWN432SP113CW04	AWS44NW	AWS76NW
AWN432SP113TW01	AWS45NW	

How Your Washer Works



TLW306S

The cycle begins with a wash fill. The water temperature is determined by the temperature selector. While water fills the washtub, a column of air is trapped in a pressure bulb and hose. The air pressure continues to increase as the washtub fills with water until it is great enough to activate the pressure switch. The pressure switch then causes the wash fill to stop and wash agitation to begin. However, the loading door must be closed for the washer to agitate or spin.

The washer uses a reversing type motor, a special drive belt and an idler assembly. The idler assembly applies tension to the outside of the drive belt.

During agitation, the motor runs in the counterclockwise direction. The spring tension on the idler pulley applies the tension required to reduce the slack on the drive belt and maintain maximum belt to motor pulley contact. This eliminates belt slippage and ensures an efficient wash action, even with extra large loads.

The belt drives the transmission drive pulley in the counterclockwise direction. The pulley drives the helix which is splined to the input shaft of the transmission. This causes the input shaft to turn inside of a roller clutch which is pressed into the transmission cover. This roller clutch acts as a bearing in the counterclockwise direction allowing the transmission gears to operate. The transmission's rack and pinion gear design produces a 210 degree agitation stroke at the output shaft of the transmission which drives the agitator. The brake assembly remains locked during the agitation mode since no pressure is applied to it by the transmission drive pulley.

After the wash agitation is completed, the timer advances into the first spin. During spin, the motor reverses turning in the clockwise direction to spin the water out of the washtub. The combination of water, washtub and load weight cause the drive belt tension on the idler side of the belt to overtake the idler spring pressure allowing the belt to become slack on the opposite side. This reduces the belt to pulley contact and allows slipping between the belt and pulley.

As water is removed by the pump and the momentum of the washtub increases, the idler spring tension gradually overcomes the belt tension removing the belt slack. This eventually increases the belt to pulley contact until maximum spin speed is achieved.

The drive pulley turns clockwise riding up the ramps of the helix, exerting pressure on the brake and forcing it to release from brake pads. The helix drives the input shaft of the transmission, and when the input shaft turns in the clockwise direction the roller clutch locks onto the shaft causing the entire transmission assembly to turn. None of the gears in the transmission are operating at this time. The hub of the washtub is splined to the transmission tube and rotates with the transmission assembly. The centrifugal force created by the spinning washtub causes water to be extracted from the clothes.

Water is introduced during the first spin to "SPRAY" the garments and remove suds from them. The initial spin is followed by rinse agitation to rinse away any detergent residue. The washer fills and then agitates like the wash portion of the cycle. Following rinse agitation, a final spin extracts the rinse water from the clothes preparing them for the dryer.

Introduction

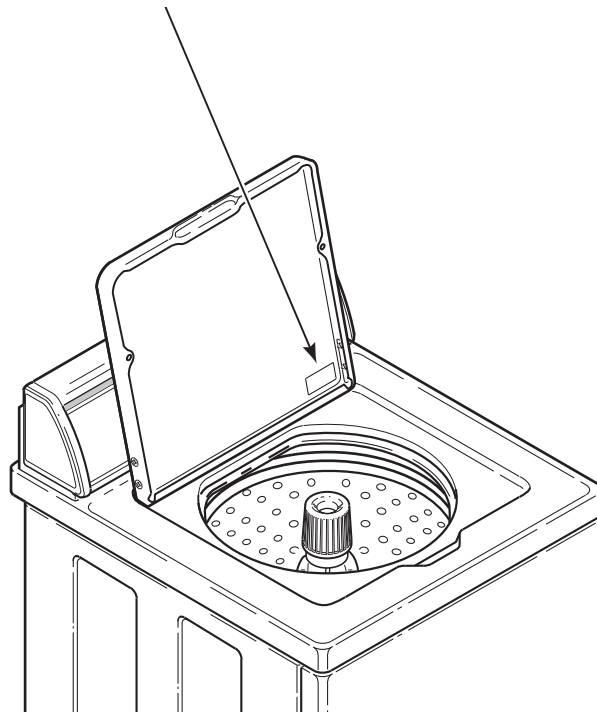
Customer Service

If literature or replacement parts are required, contact the source from whom the machine was purchased or contact Alliance Laundry Systems at (920) 748-3950 for the name and address of the nearest authorized parts distributor.

For technical assistance, call (920) 748-3121.

Nameplate Location

When calling or writing about your product, be sure to mention model and serial numbers. Model and serial numbers are located on nameplate(s) as shown.



W429SE1B

Section 3

Troubleshooting



WARNING

To reduce the risk of electric shock, fire, explosion, serious injury or death:

- Disconnect electric power to the washer before servicing.
- Never start the washer with any guards/panels removed.
- Whenever ground wires are removed during servicing, these ground wires must be reconnected to ensure that the washer is properly grounded.

W003

IMPORTANT: Refer to Wiring Diagram for aid in testing washer components.

1. Low Water Level on High Fill Setting

- a. If there is an instance of a low water level on the highest fill setting, check that the high setting water level is approximately 1.5 inches below the top row of washtub holes.
- b. If the water level is within .5 inch of this level without clothes, it is performing as designed. Recent new mandates from the Department of Energy (DOE) call for certain efficiencies to be met by all washer manufacturers which require the use of a different pressure switch to meet these requirements. No modification can be made to the washer to fill higher on this setting.

2. Clicking Noise During Operation on NEWLY Installed Units

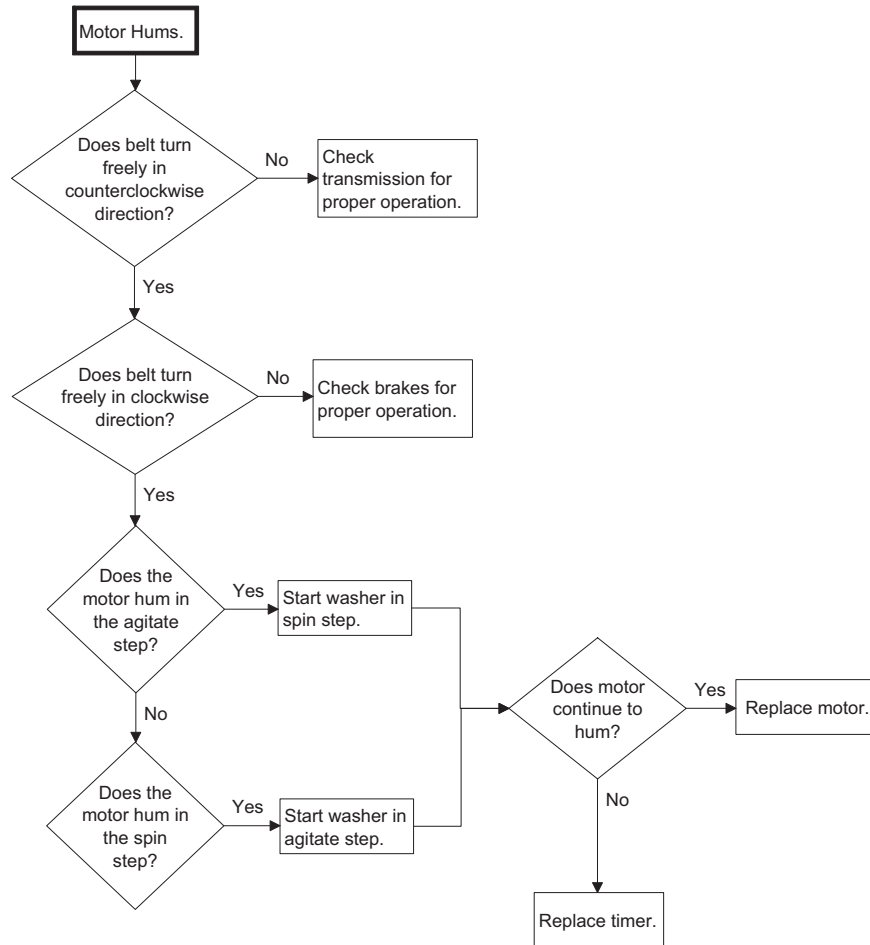
If a clicking noise is heard when first starting up a new topload washer, the noise is related to the belt taking a temporary “set” around the idler pulley. The set causes a slight bump in the belt which in turn causes the idler lever to tap the motor bracket making the clicking noise. **THE BELT DOES NOT NEED TO BE REPLACED.**

To correct this condition please perform the following break-in procedure:

1. After installing the unit start a fill cycle to make sure the seals have been lubricated.
2. Stop the fill cycle and place the unit into a spin cycle.
3. Run the cycle for several minutes until the belt has warmed up. This will remove the “set.”
4. Normal use will keep the belt from resetting.
5. For extended periods of non-use (three to four weeks), this procedure might need to be repeated.

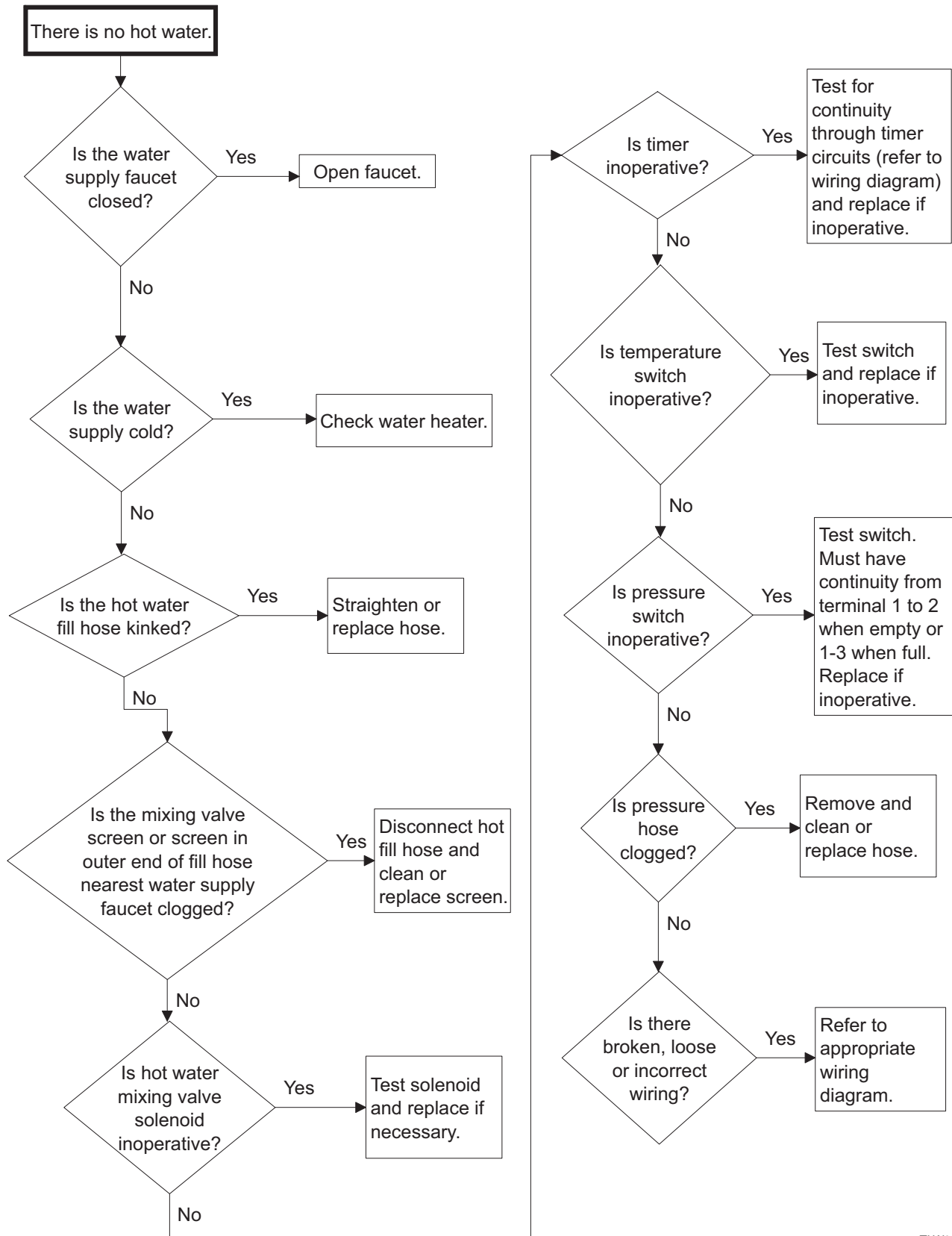
3. Motor Hums

A topload washer exhibiting a humming motor in agitation or spin may require the timer or motor to be replaced. Refer to flow chart below to determine if the motor or timer needs to be replaced.



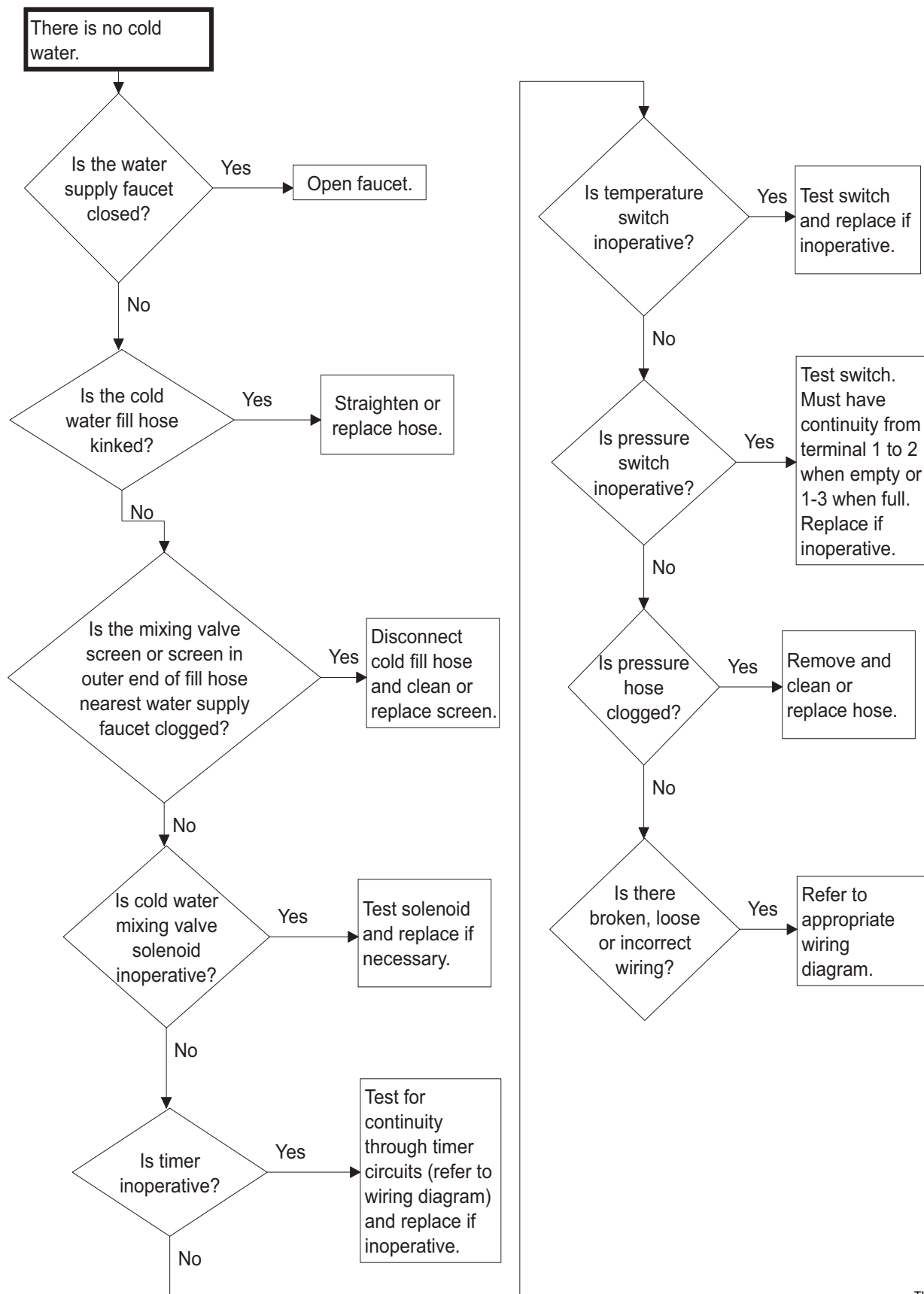
TLW403S

4. No Hot Water



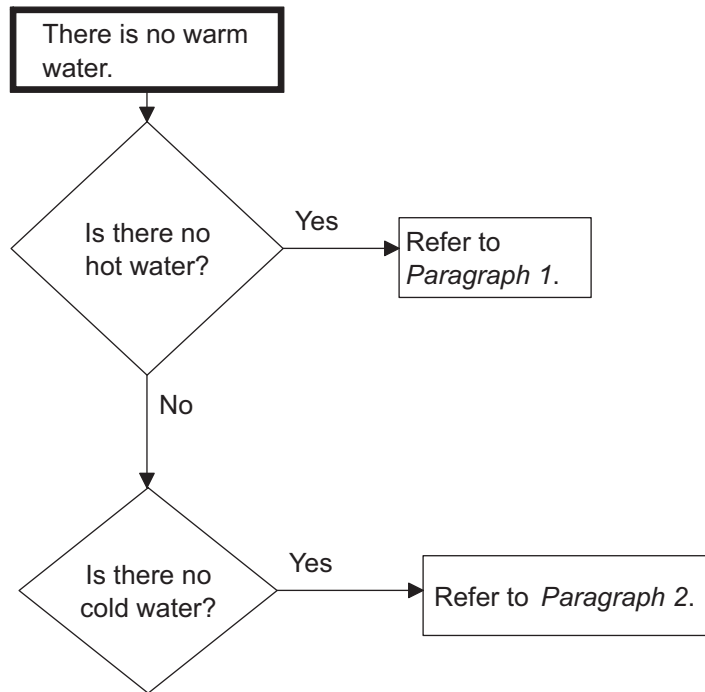
TLW346S

5. No Cold Water



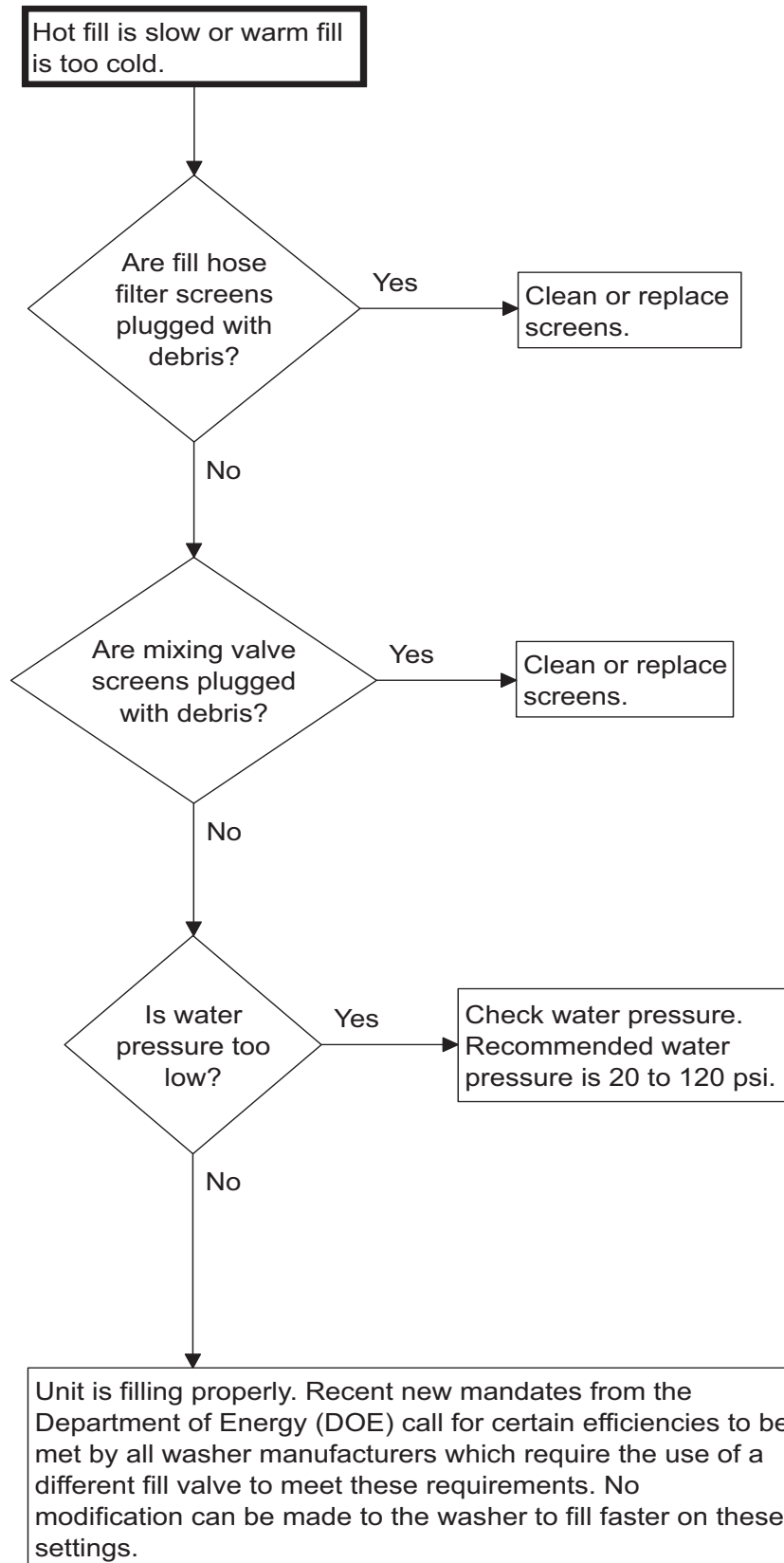
TLW347S

6. No Warm Water

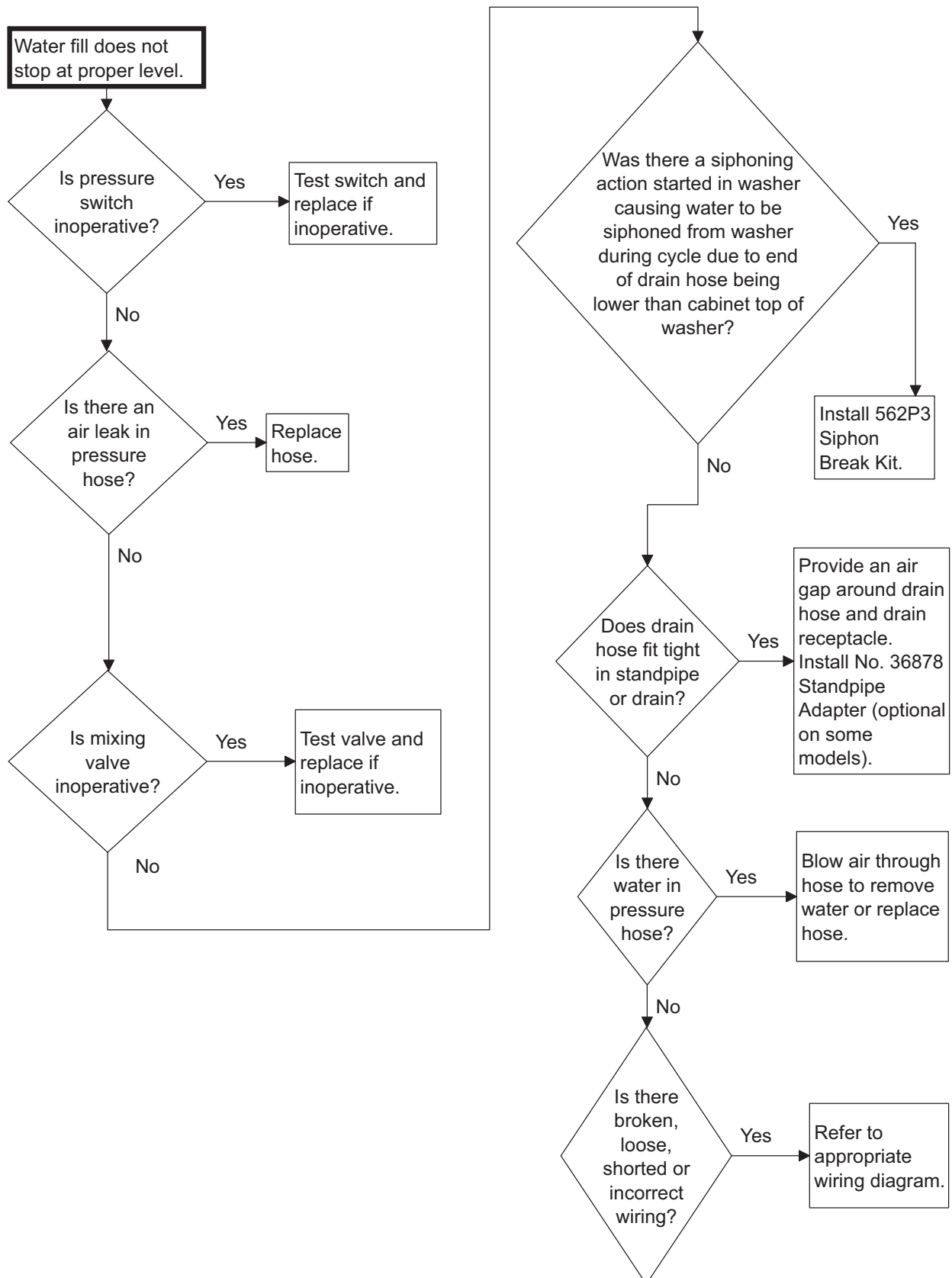


TLW328S

7. Slow Hot Fill or Warm Fill is Too Cold

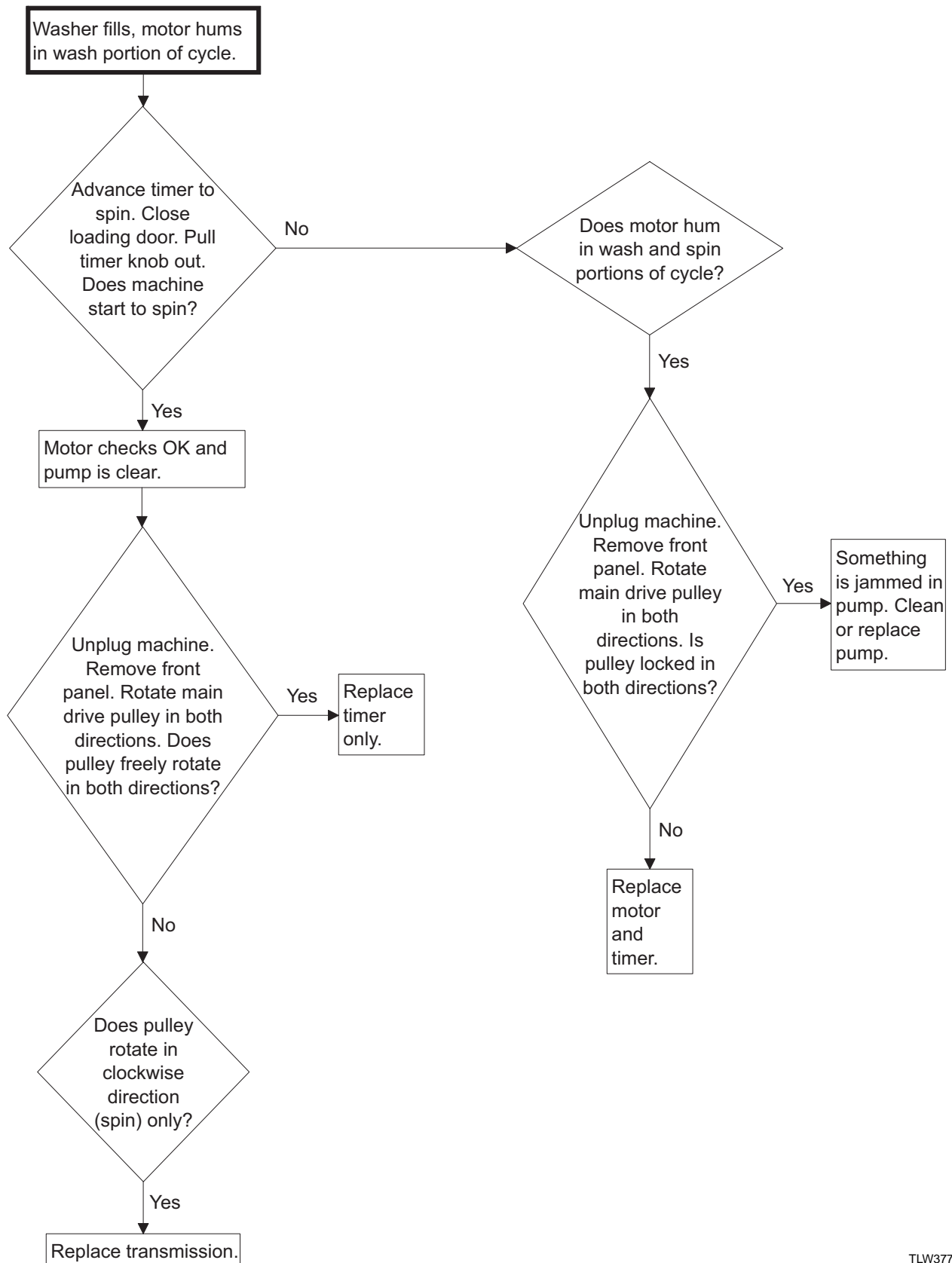


8. Water Fill Does Not Stop At Proper Level



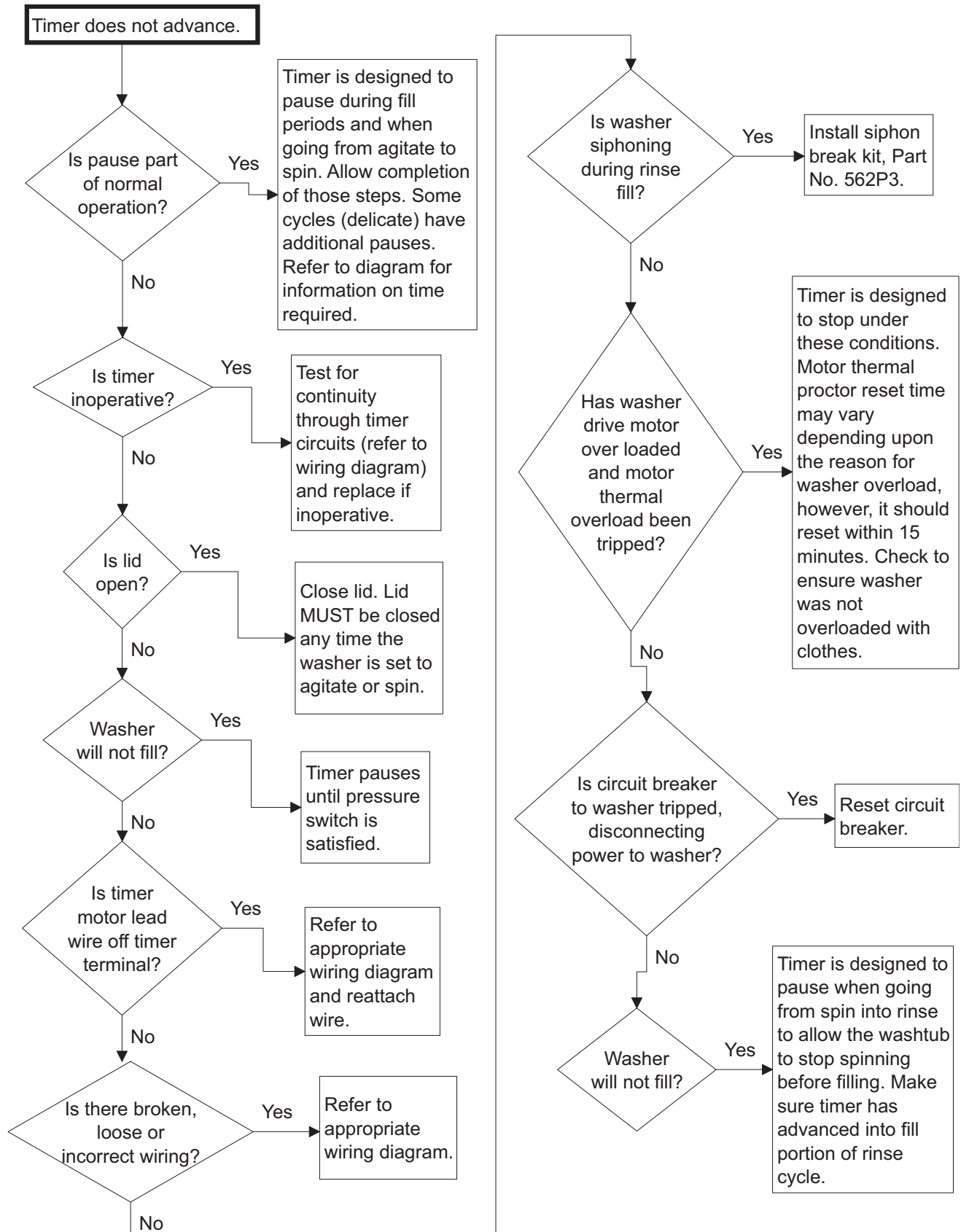
TLW348S

9. Washer Fills, Motor Hums



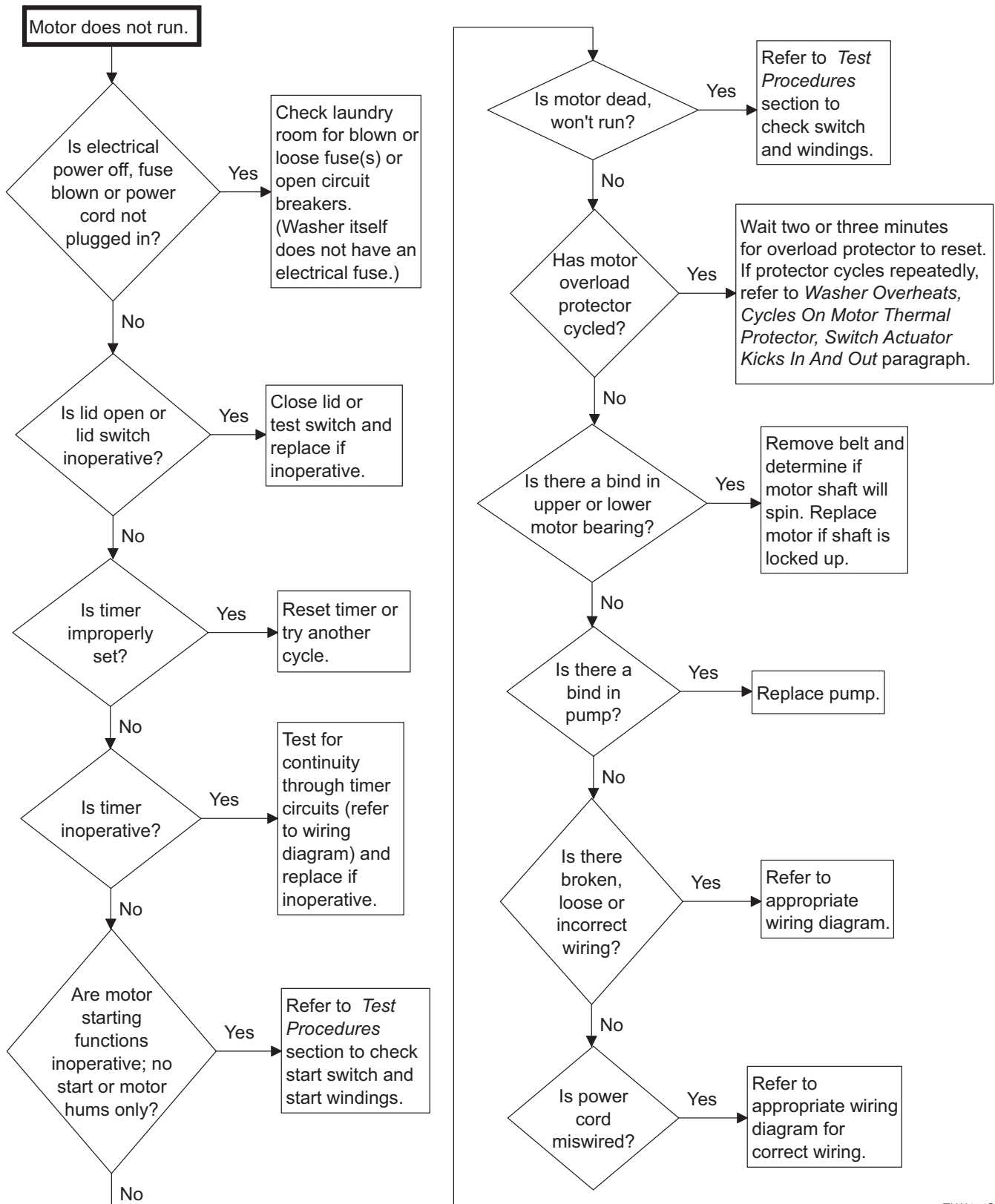
TLW377S

10. Timer Does Not Advance



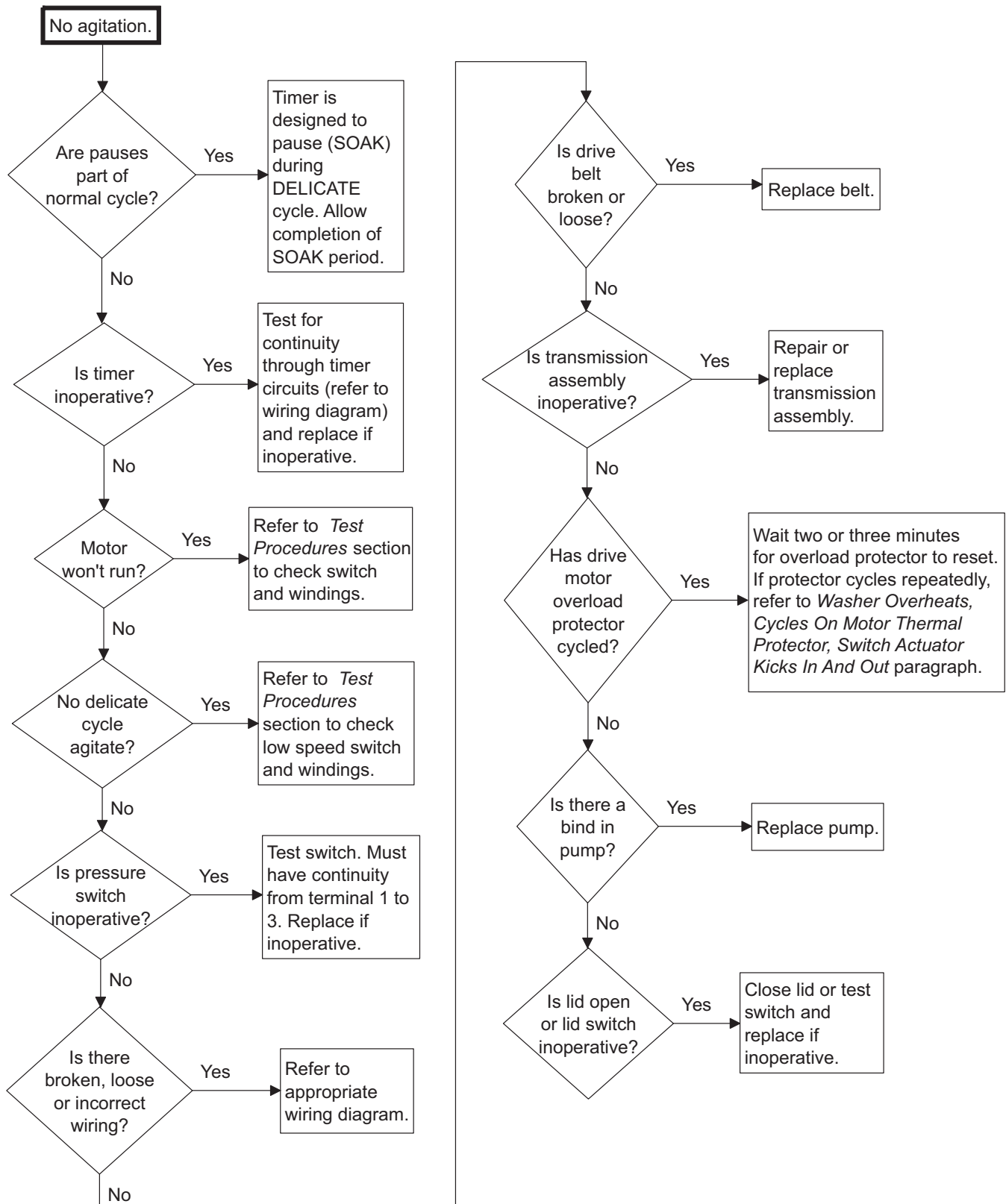
TLW349S

11. Motor Does Not Run



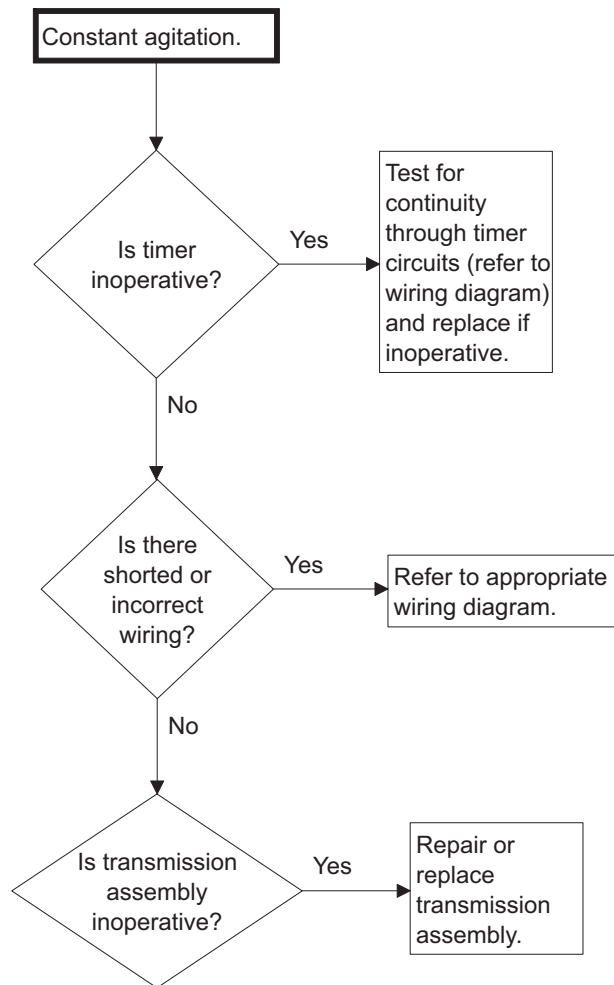
TLW474S

12. No Agitation



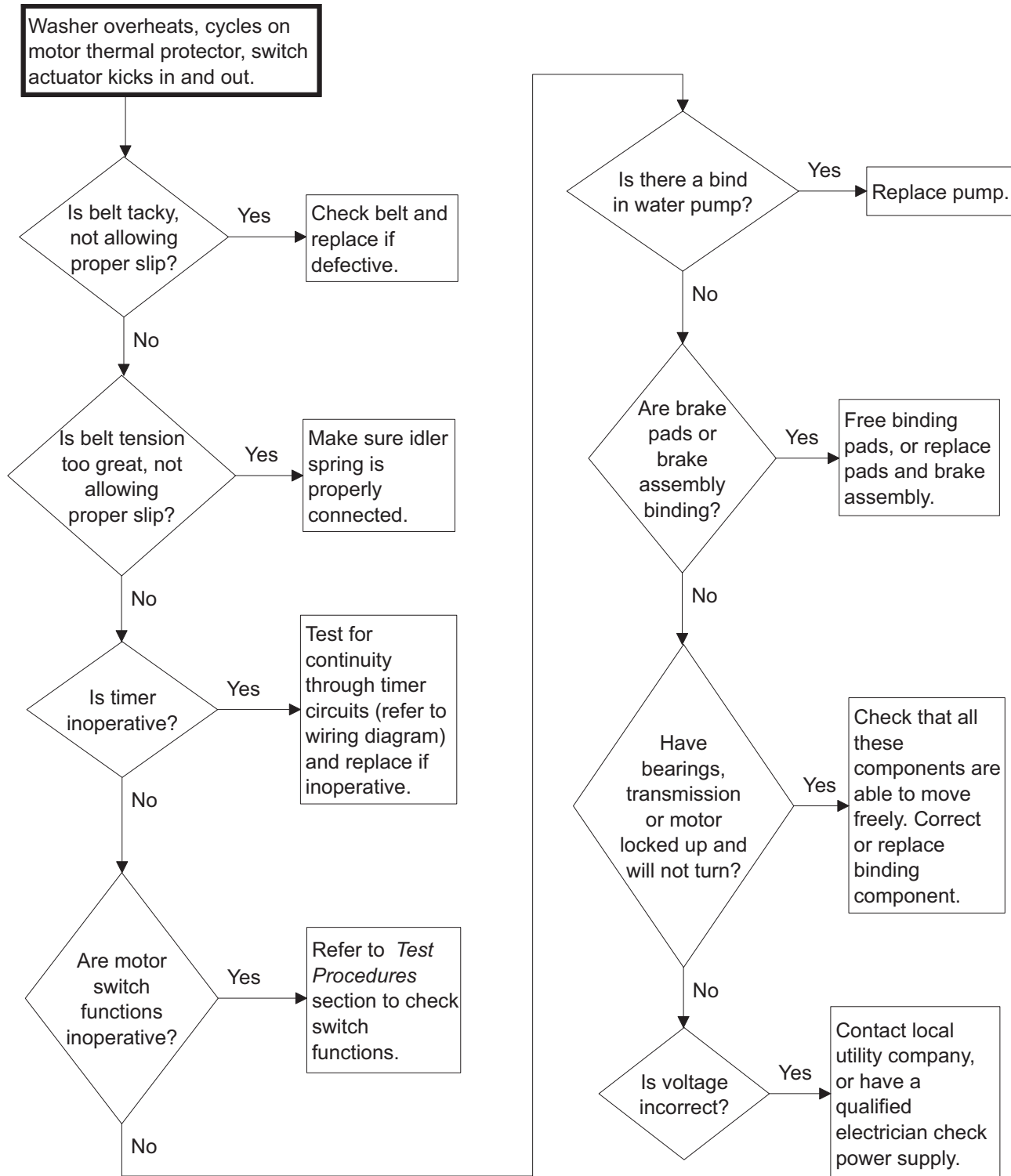
TLW475S

13. Constant Agitation

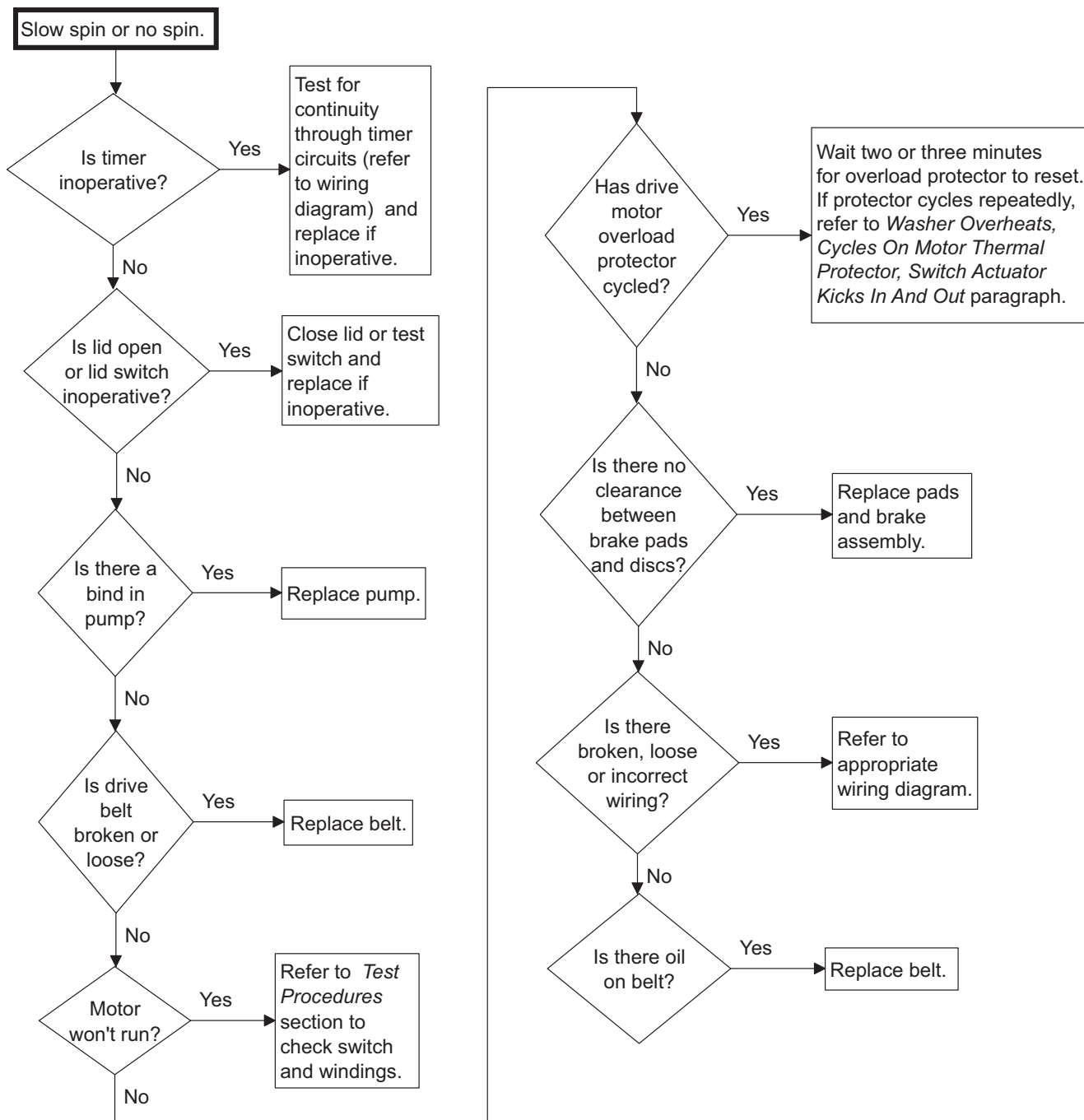


TLW352S

14. Washer Overheats, Cycles On Motor Thermal Protector, Switch Actuator Kicks In And Out

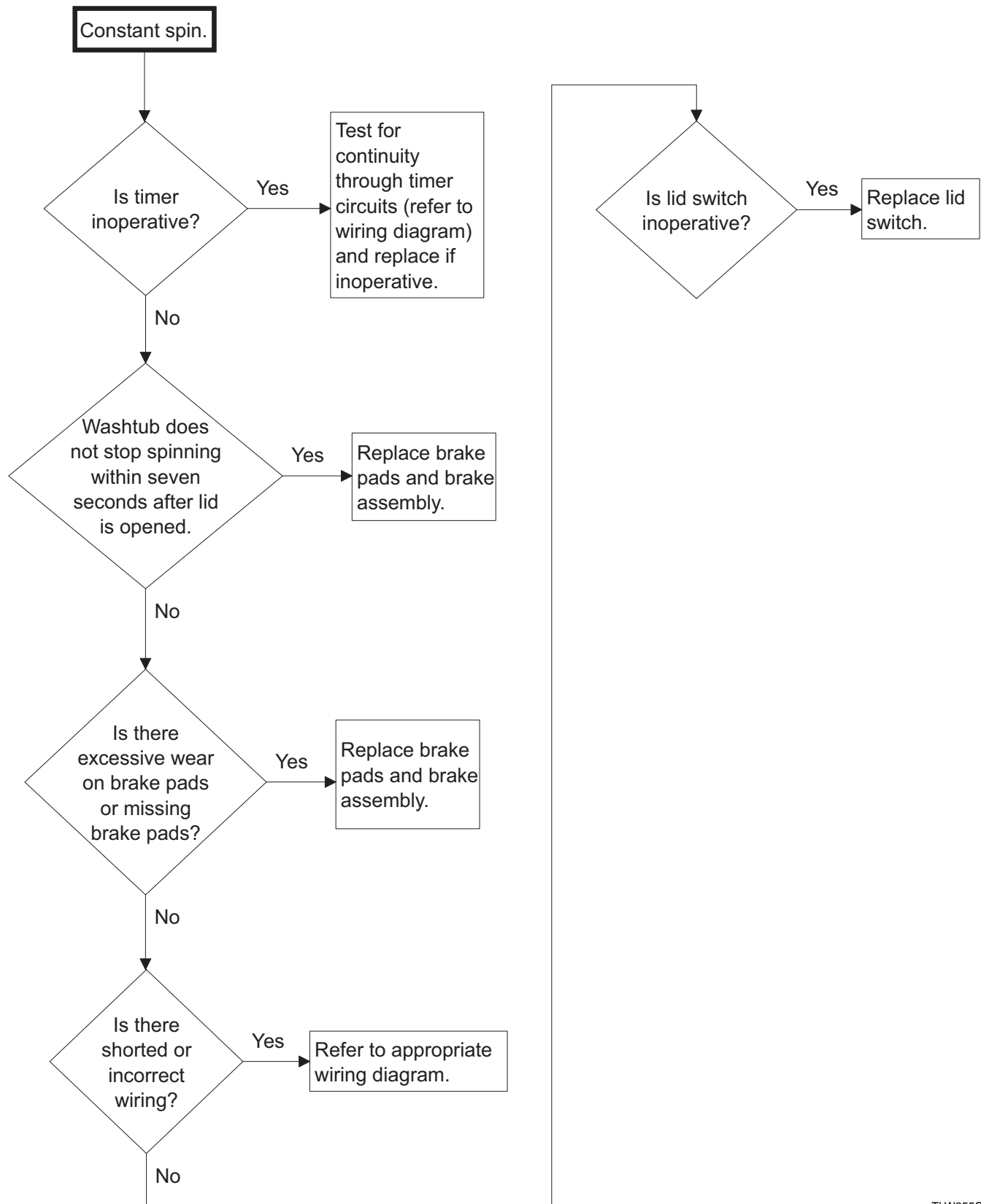


15. Slow Spin Or No Spin



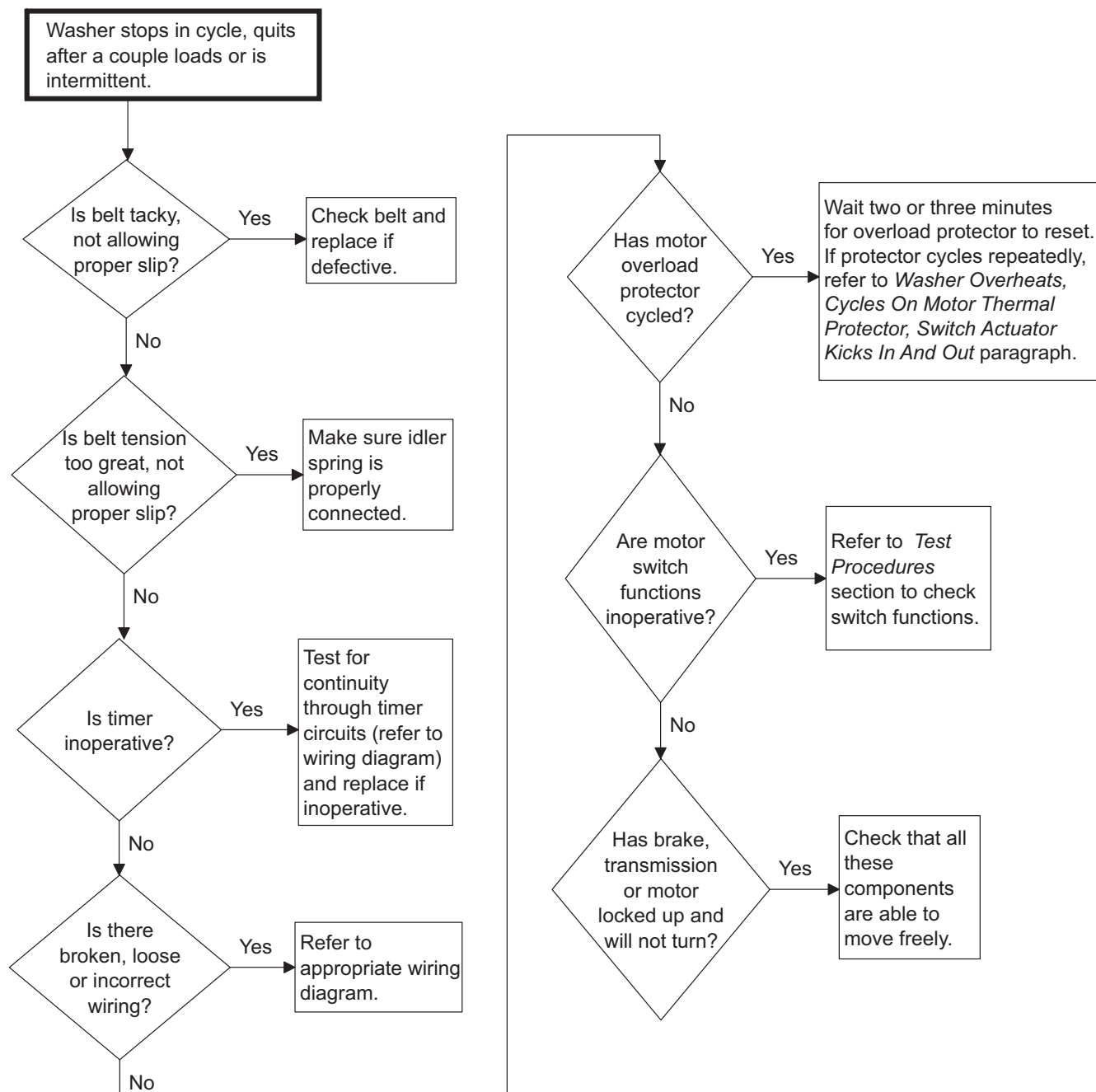
TLW476S

16. Constant Spin



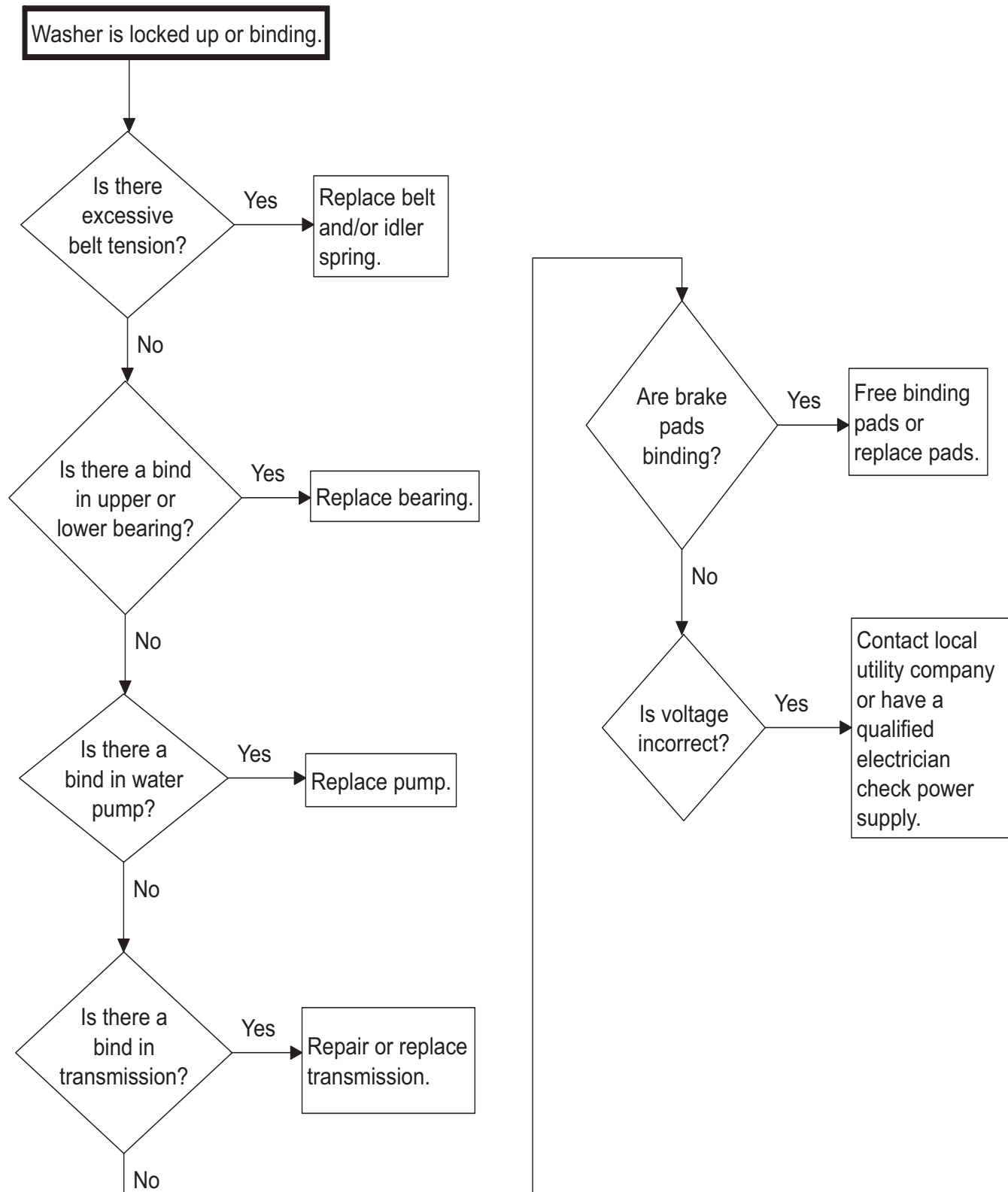
TLW355S

17. Washer Stops In Cycle; Quits After A Couple Loads; Is Intermittent

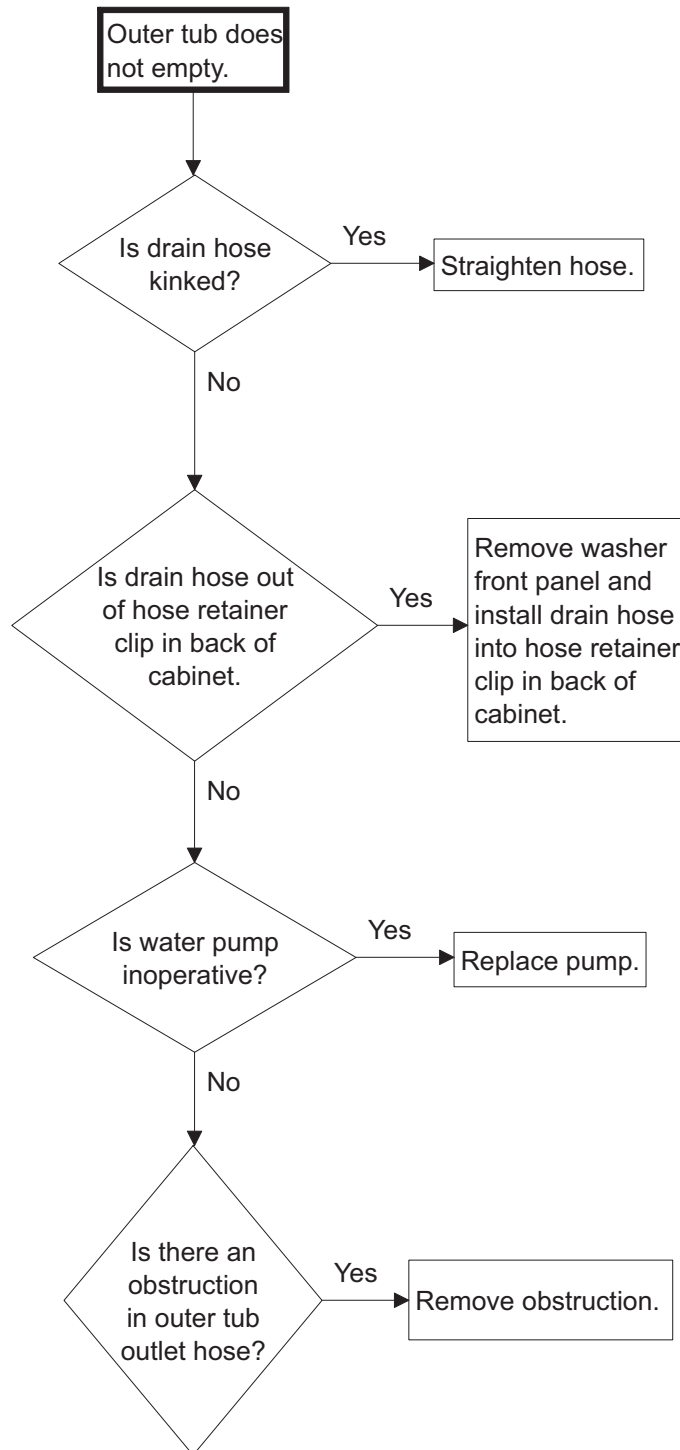


TLW477S

18. Washer Is Locked Up Or Binding

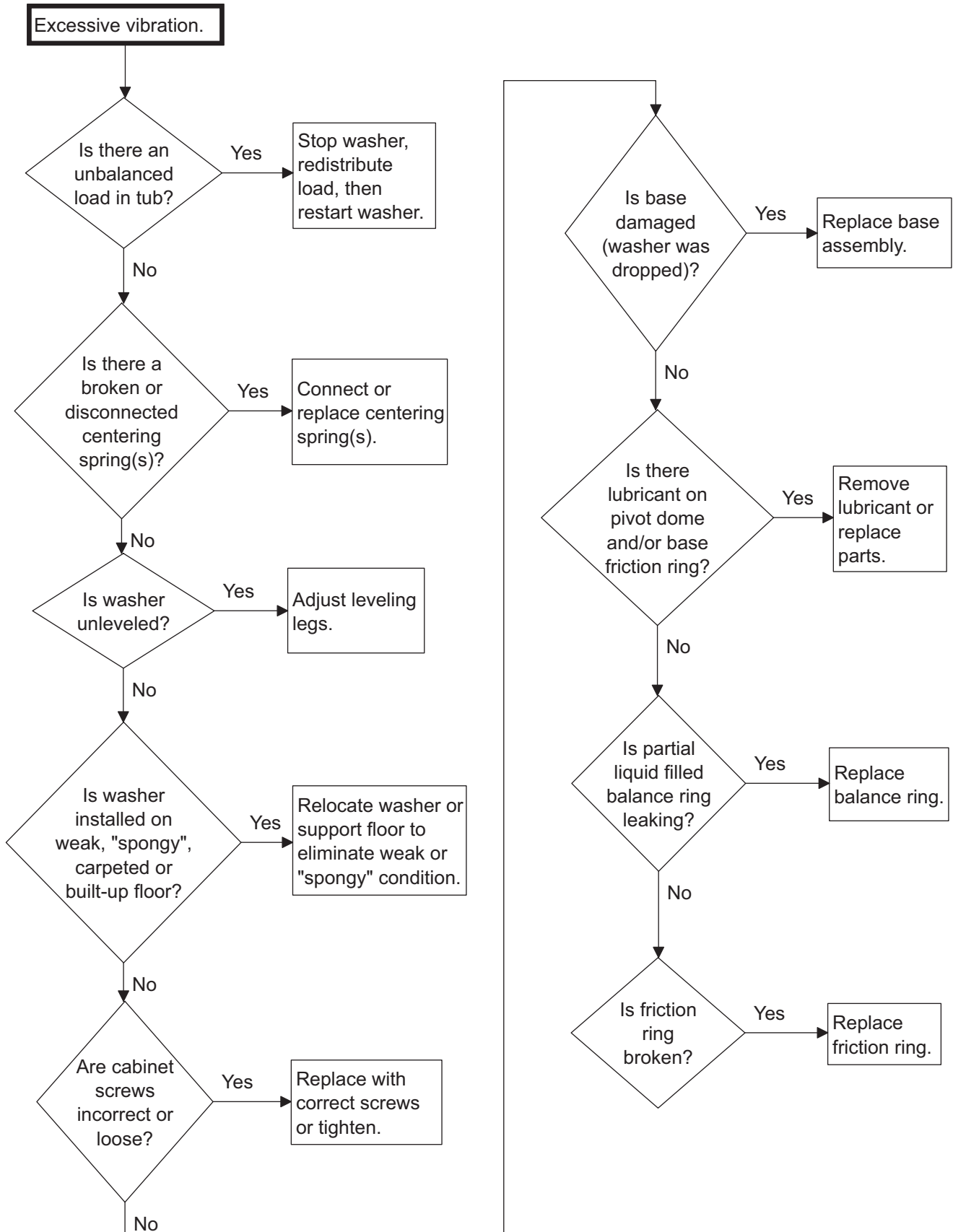


19. Outer Tub Does Not Empty



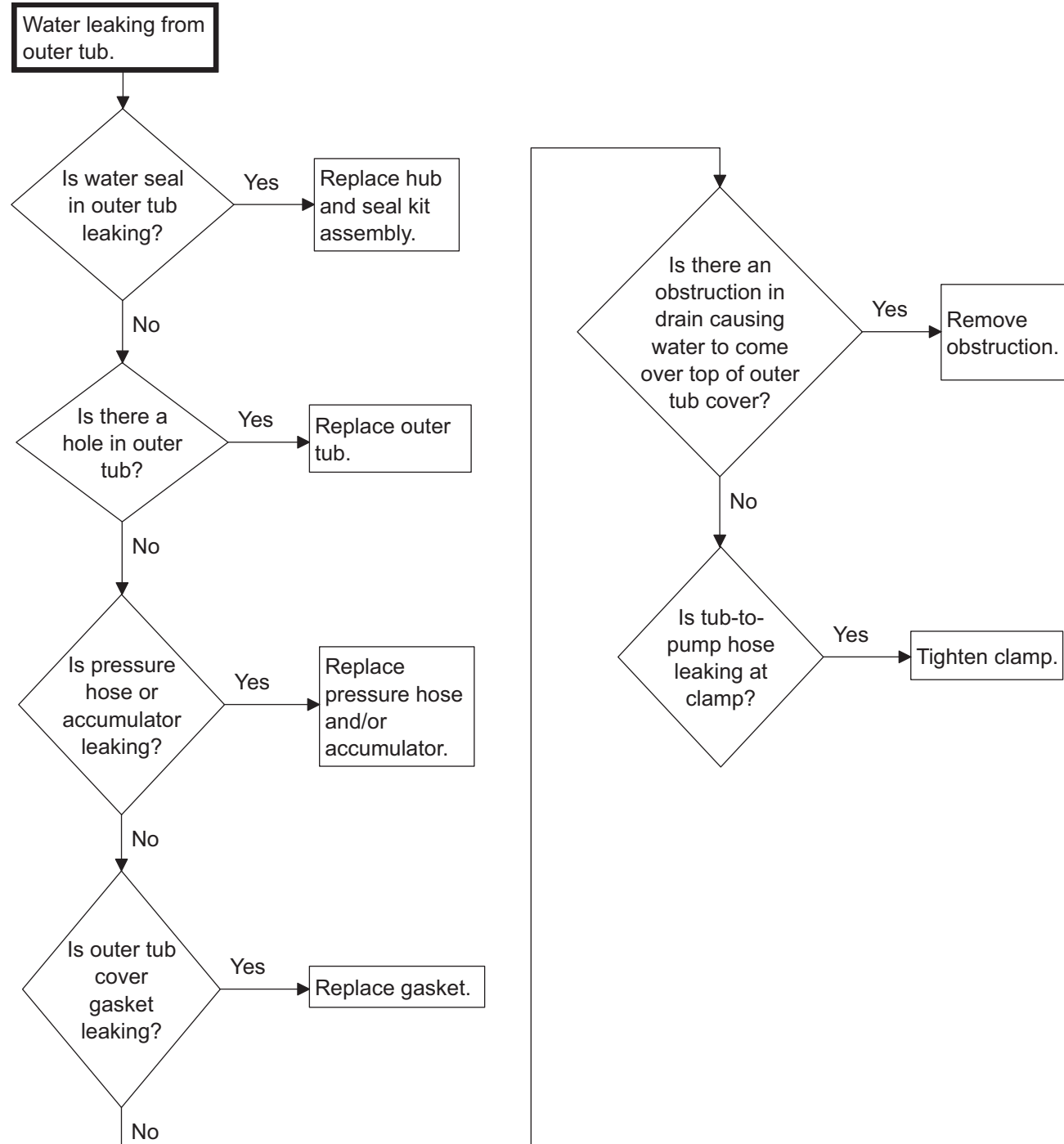
TLW339S

20. Excessive Vibration



TLW357S

21. Water Leaking From Outer Tub



Section 4

Control Troubleshooting

Model AUNA11SP111TW01



WARNING

To reduce the risk of electric shock, fire, explosion, serious injury or death:

- Disconnect electric power to the washer before servicing.
- Never start the washer with any guards/panels removed.
- Whenever ground wires are removed during servicing, these ground wires must be reconnected to ensure that the washer is properly grounded.

W003

22. Error Mode

In Error Mode, the *IN USE* LED flashes to display fill and drain errors (refer to paragraphs below). Error Mode can only be exited by powering down washer.

Fill Error

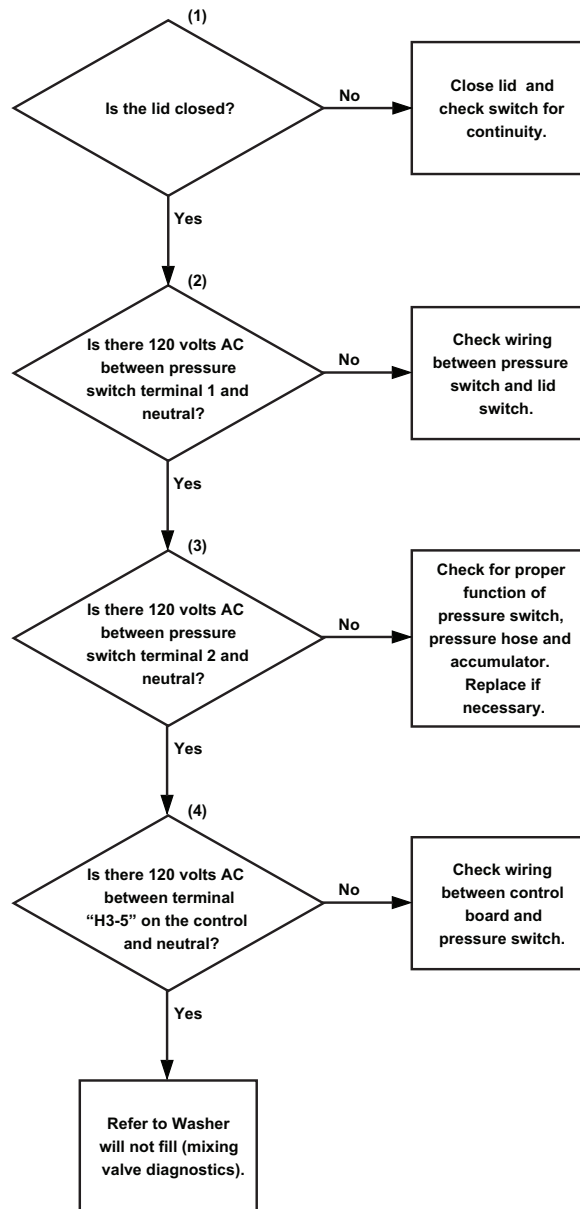
A Fill Error will occur if the tub does not fill within 62 minutes of the start of the cycle. A Fill Error is indicated by the control repeatedly flashing the *IN USE* LED twice separated by a one and a half second pause until the control is powered down. If Error Mode is turned off, the fill error will not occur and the control will continue to wait for the fill level to be reached.

Drain Error

A Drain Error will occur if the tub is not empty after a spin cycle. A Drain Error is indicated by the control repeatedly flashing the *IN USE* LED three times separated by a one and a half second pause until the control is powered down. If Error Mode is turned off, the drain error will not occur and the machine cycle will advance to the next cycle step as though the water had been pumped out.

23. Washer Will Not Fill (Pressure Switch Diagnostic)

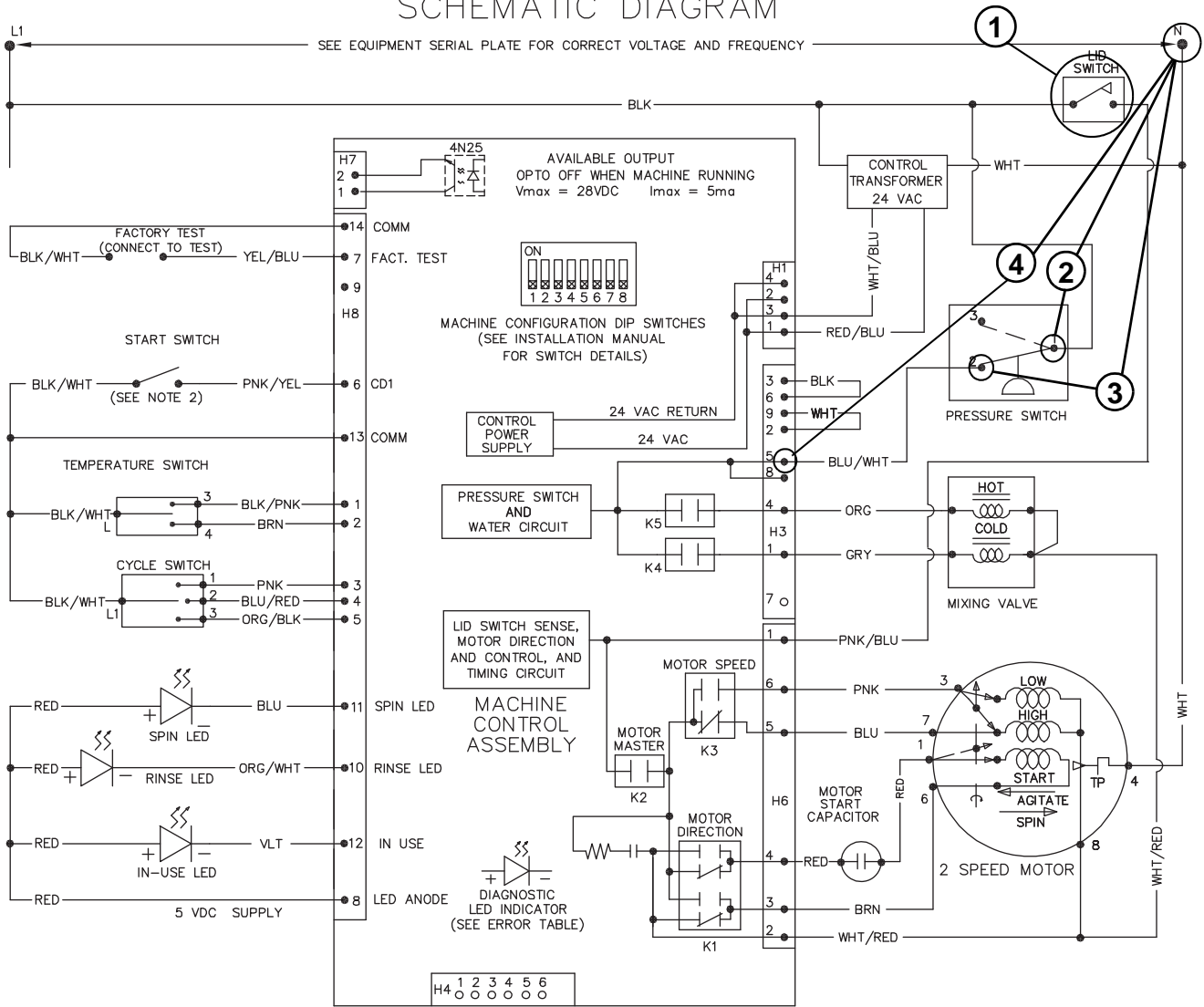
Note: Assuming water is turned on.



TLW343S

Washer Will Not Fill (Pressure Switch Diagnostic)

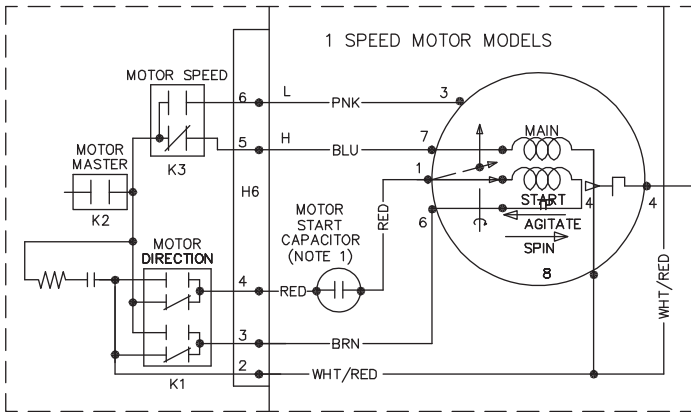
SCHEMATIC DIAGRAM



3 POSITION WASH TEMPERATURE SWITCH	
WHITES/HOT	L-3
COLORS/WARM	L-3-4
DELICATES/COLD	L-4

6 POSITION FABRIC/CYCLE SWITCH	
OFF	L1-1-3
NORMAL	L1-1
PERM. PRESS	L1-1-2
DELICATE	L1-3
RINSE AND SPIN	L1-2
SPIN ONLY	L1-2-3

ERROR CODE TABLE
DIAGNOSTIC LED ERROR INDICATOR ON CONTROL AND "IN USE" LIGHT WILL FLASH AN ERROR CODE IF MACHINE CONTROL SENSES A FAULT.
LEDS WILL FLASH ERROR CODE FOLLOWED BY A 1.5 SECOND PAUSE.
ERROR CODE 2 (TWO FLASHES): FILL ERROR
ERROR CODE 3 (THREE FLASHES): DRAIN ERROR (DISCONNECT POWER TO MACHINE TO CLEAR ERROR CODES) (SEE INSTALLATION MANUAL FOR ERROR DETAILS)

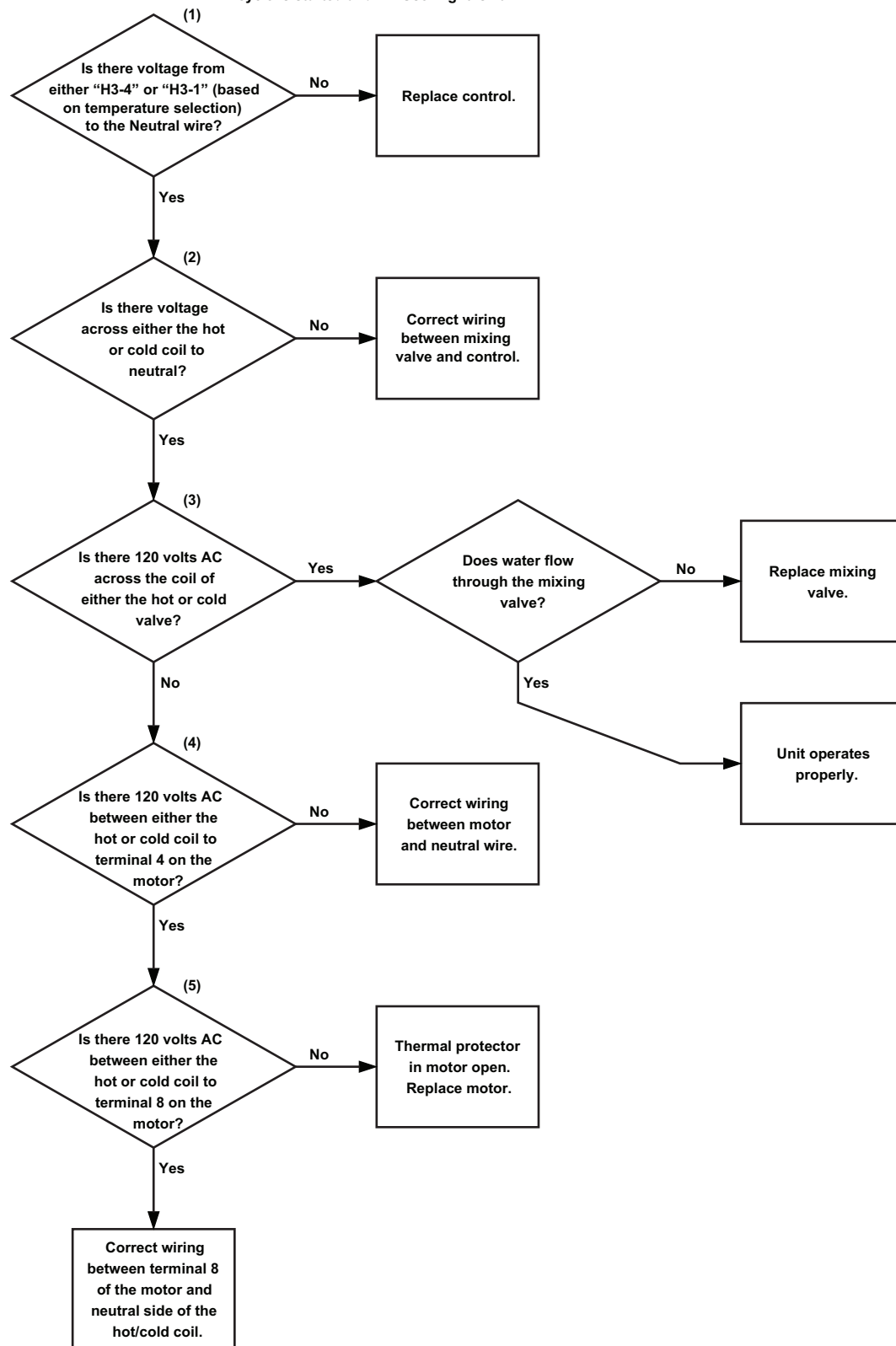


PART NO. 202339

TLW466S

24. Washer Will Not Fill (Mixing Valve Diagnostic)

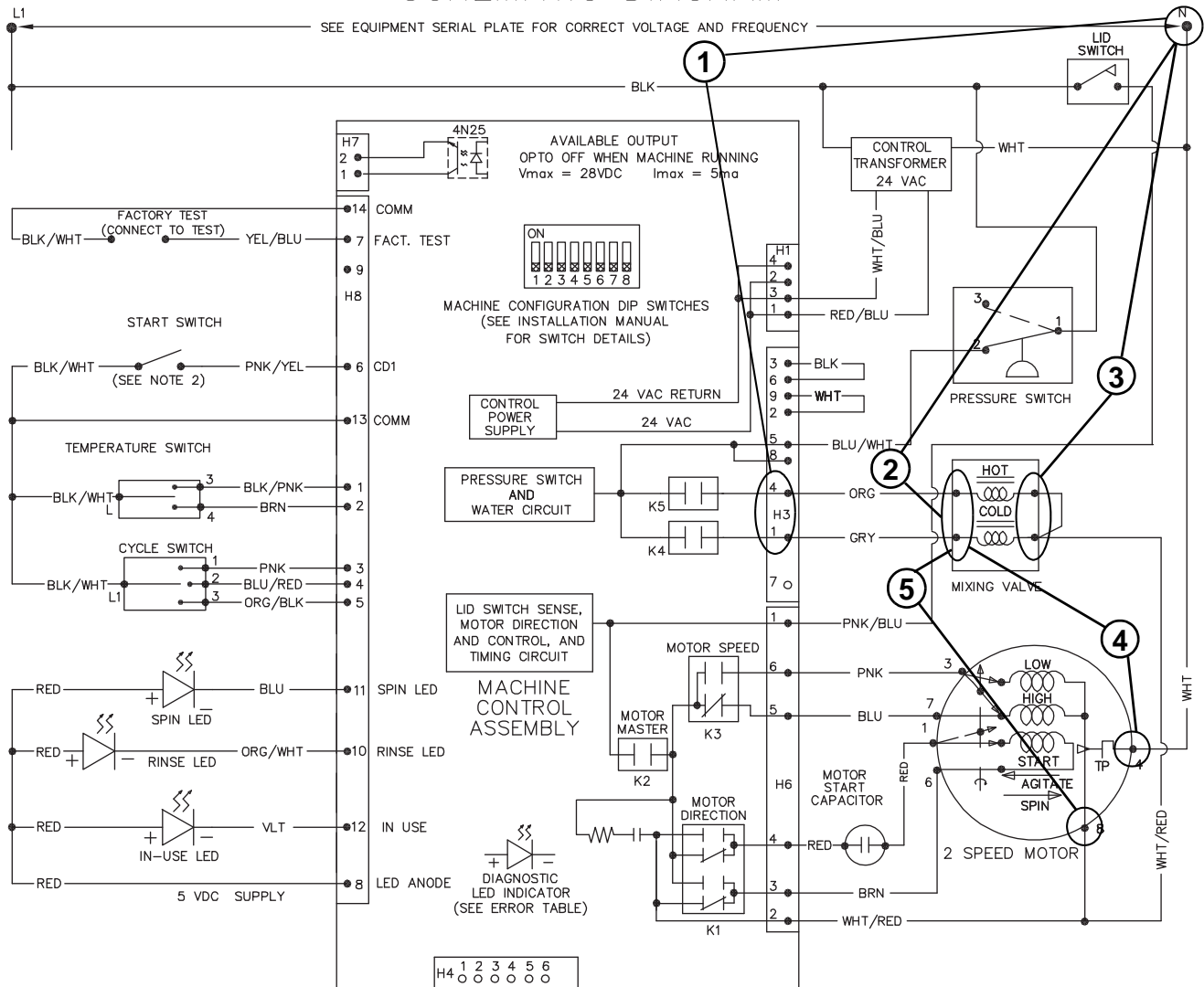
Note: Assuming No Fill (pressure switch diagnostics) checks out okay, and cycle is started and "In Use" light is lit.



TLW344S

Washer Will Not Fill (Mixing Valve Diagnostic)

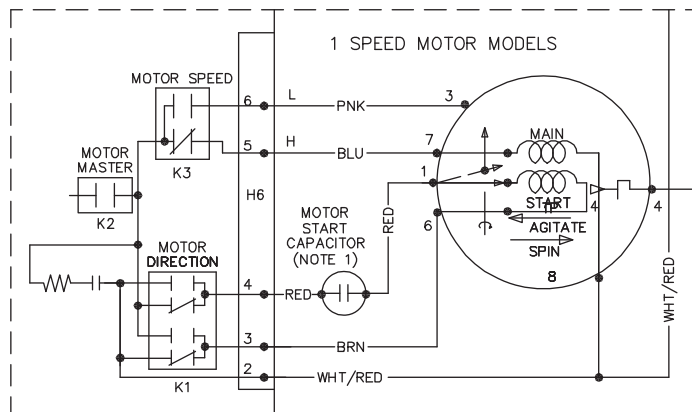
SCHEMATIC DIAGRAM



3 POSITION WASH TEMPERATURE SWITCH	
WHITES/HOT	L-3
COLORS/WARM	L-3-4
DELICATES/COLD	L-4

6 POSITION FABRIC/CYCLE SWITCH	
OFF	L1-1-3
NORMAL	L1-1
PERM. PRESS	L1-1-2
DELICATE	L1-3
RINSE AND SPIN	L1-2
SPIN ONLY	L1-2-3

ERROR CODE TABLE	
DIAGNOSTIC LED ERROR INDICATOR ON CONTROL AND "IN USE" LIGHT WILL FLASH AN ERROR CODE IF MACHINE CONTROL SENSES A FAULT.	
LEDS WILL FLASH ERROR CODE FOLLOWED BY A 1.5 SECOND PAUSE.	
ERROR CODE 2 (TWO FLASHES): FILL ERROR	
ERROR CODE 3 (THREE FLASHES): DRAIN ERROR	
(DISCONNECT POWER TO MACHINE TO CLEAR ERROR CODES)	
(SEE INSTALLATION MANUAL FOR ERROR DETAILS)	

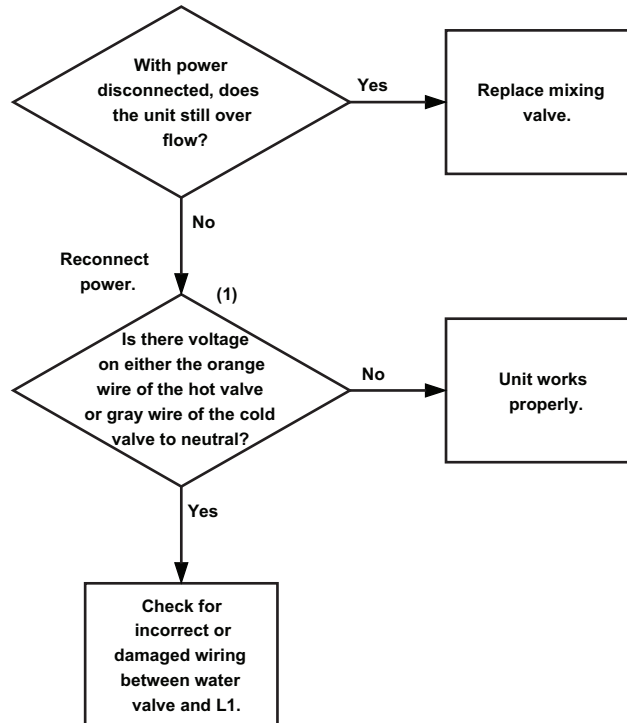


PART NO. 202339

TLW466S

25. Washer Over Fills (Pressure Switch Open)

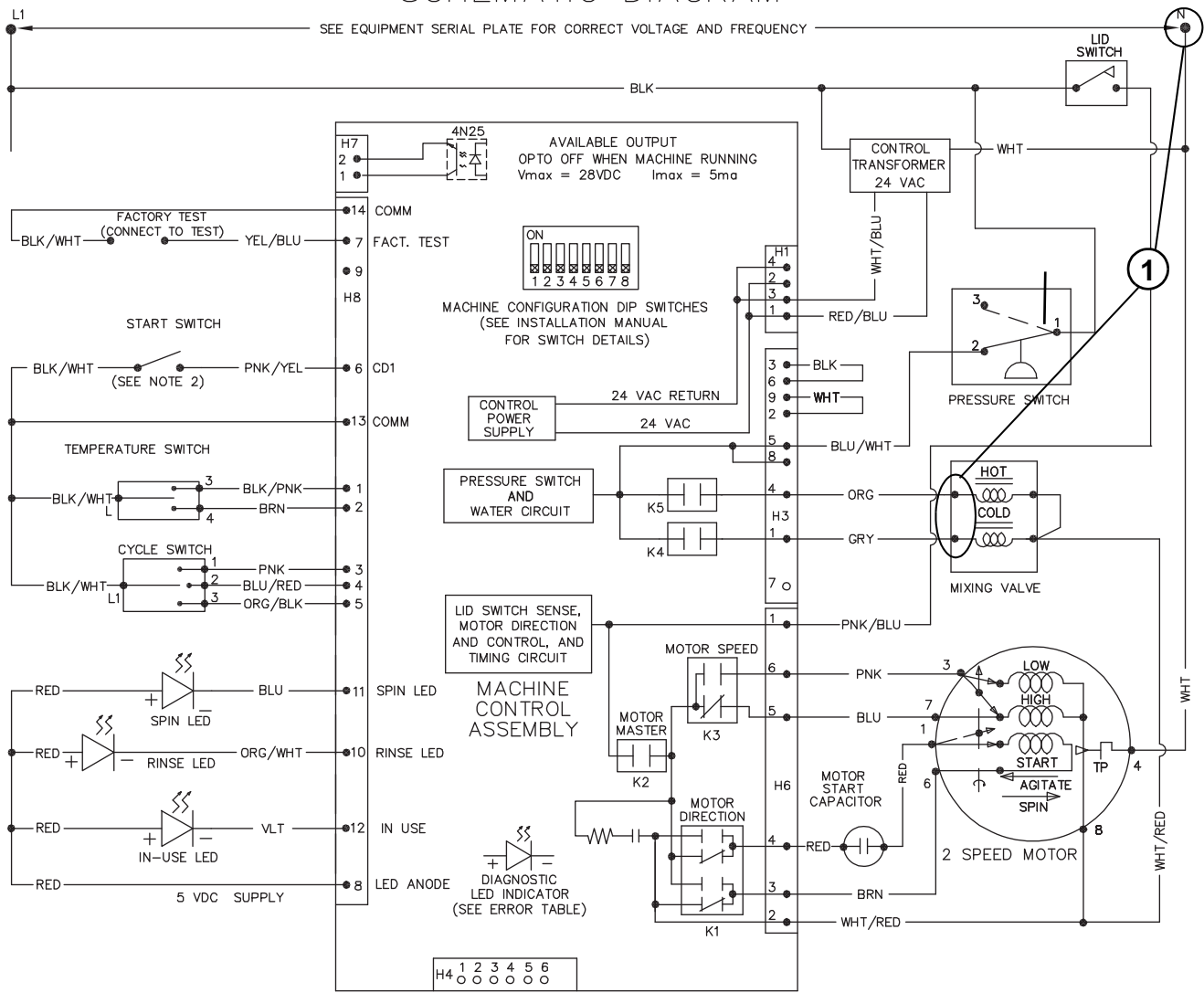
Washer Over Fills.



TLW287S

Washer Over Fills (Pressure Switch Open)

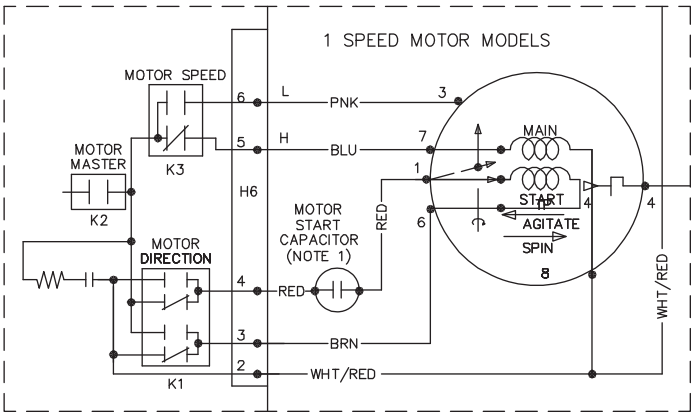
SCHEMATIC DIAGRAM



3 POSITION WASH TEMPERATURE SWITCH	
WHITES/HOT	L-3
COLORS/WARM	L-3-4
DELICATES/COLD	L-4

6 POSITION FABRIC/CYCLE SWITCH	
OFF	L1-1-3
NORMAL	L1-1
PERM. PRESS	L1-1-2
DELICATE	L1-3
RINSE AND SPIN	L1-2
SPIN ONLY	L1-2-3

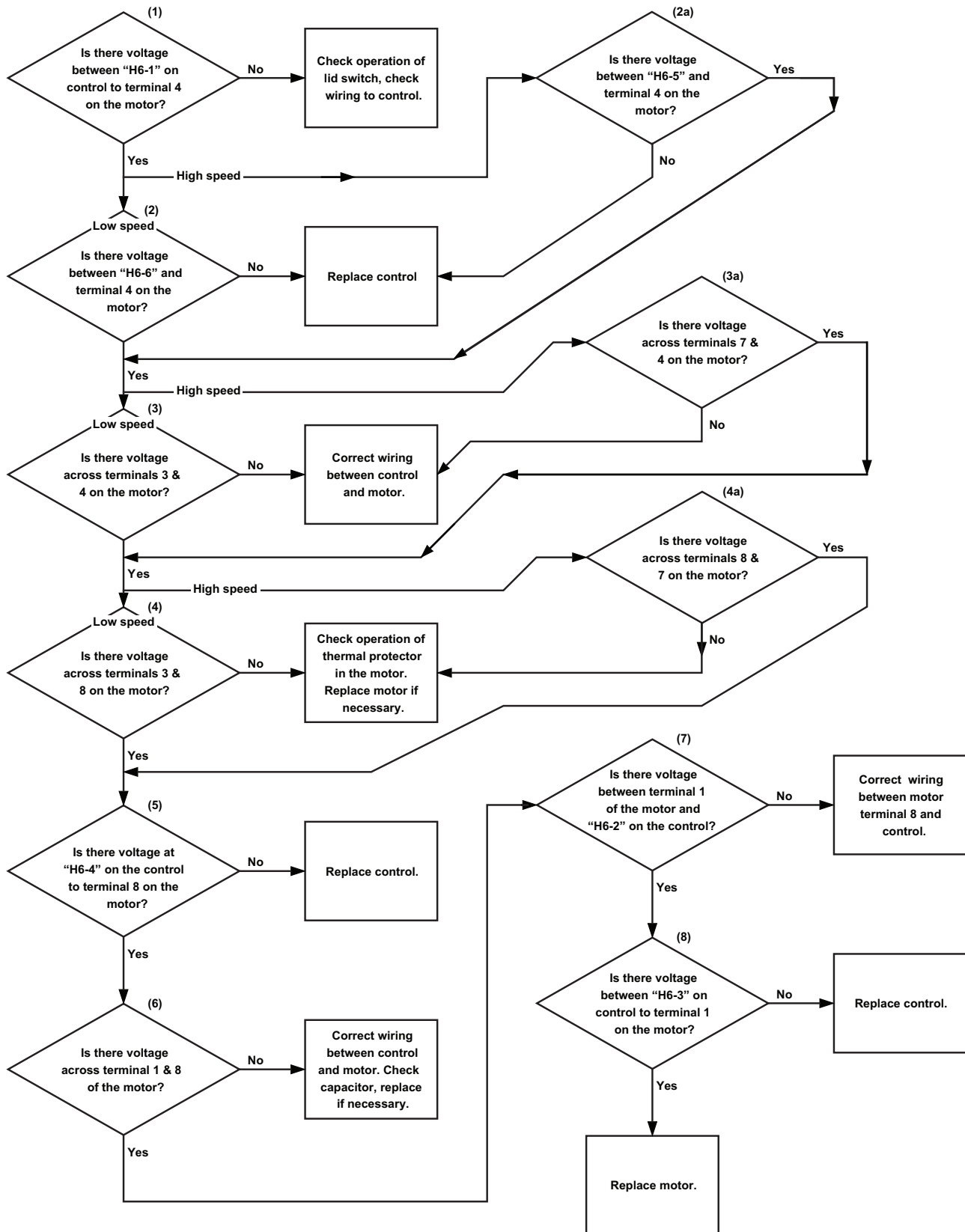
ERROR CODE TABLE
DIAGNOSTIC LED ERROR INDICATOR ON CONTROL AND "IN USE" LIGHT WILL FLASH AN ERROR CODE IF MACHINE CONTROL SENSES A FAULT.
LEDS WILL FLASH ERROR CODE FOLLOWED BY A 1.5 SECOND PAUSE.
ERROR CODE 2 (TWO FLASHES): FILL ERROR
ERROR CODE 3 (THREE FLASHES): DRAIN ERROR
(DISCONNECT POWER TO MACHINE TO CLEAR ERROR CODES) (SEE INSTALLATION MANUAL FOR ERROR DETAILS)



PART NO. 202339

TLW466S

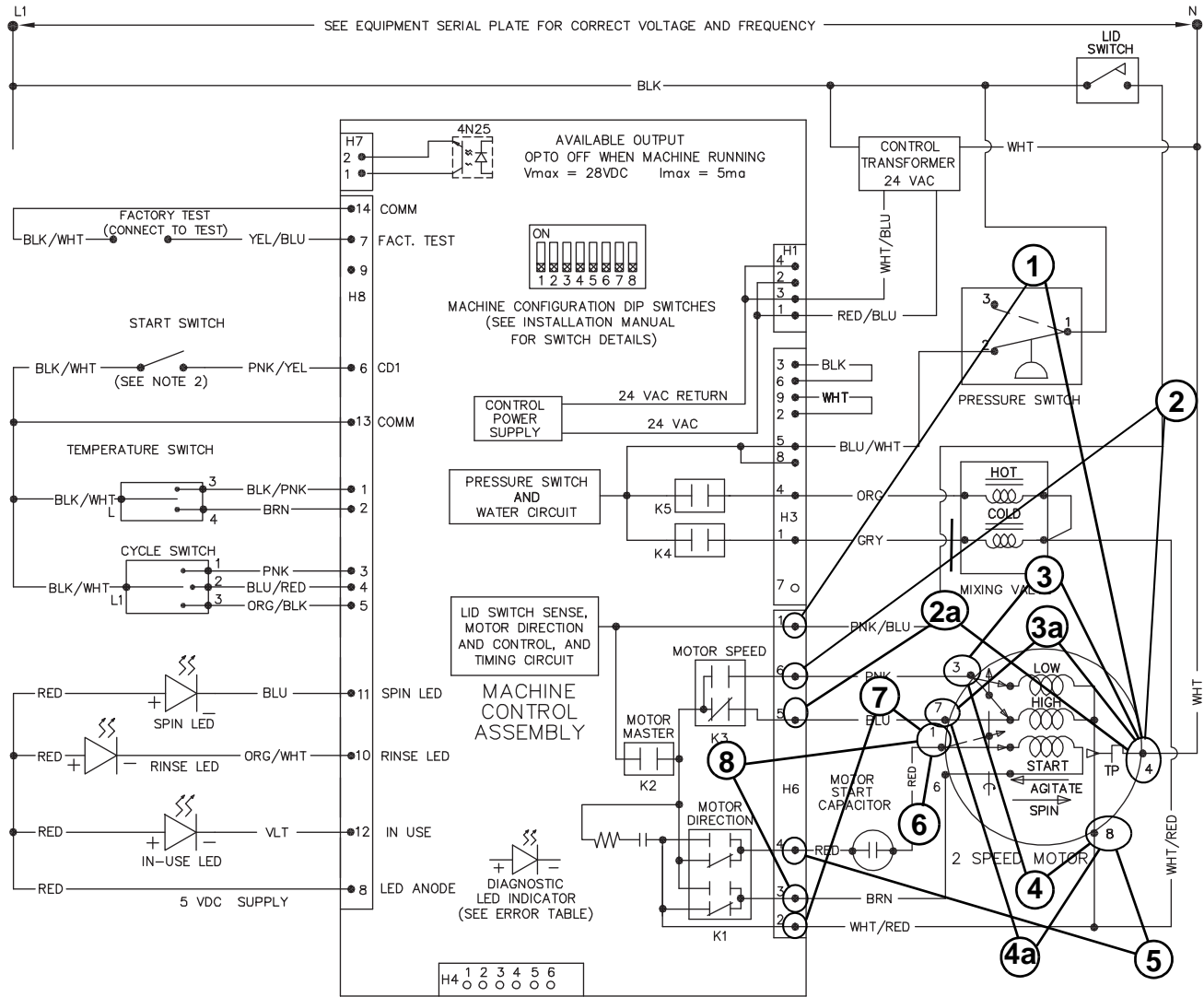
26. No Agitation – Low and High Speed



TLW345S

No Agitation – Low and High Speed

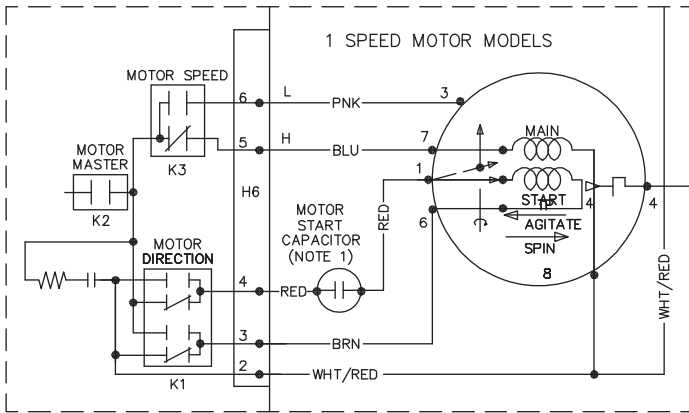
SCHEMATIC DIAGRAM



3 POSITION WASH TEMPERATURE SWITCH	
WHITES/HOT	L-3
COLORS/WARM	L-3-4
DELICATES/COLD	L-4

6 POSITION FABRIC/CYCLE SWITCH	
OFF	L1-1-3
NORMAL	L1-1
PERM. PRESS	L1-1-2
DELICATE	L1-3
RINSE AND SPIN	L1-2
SPIN ONLY	L1-2-3

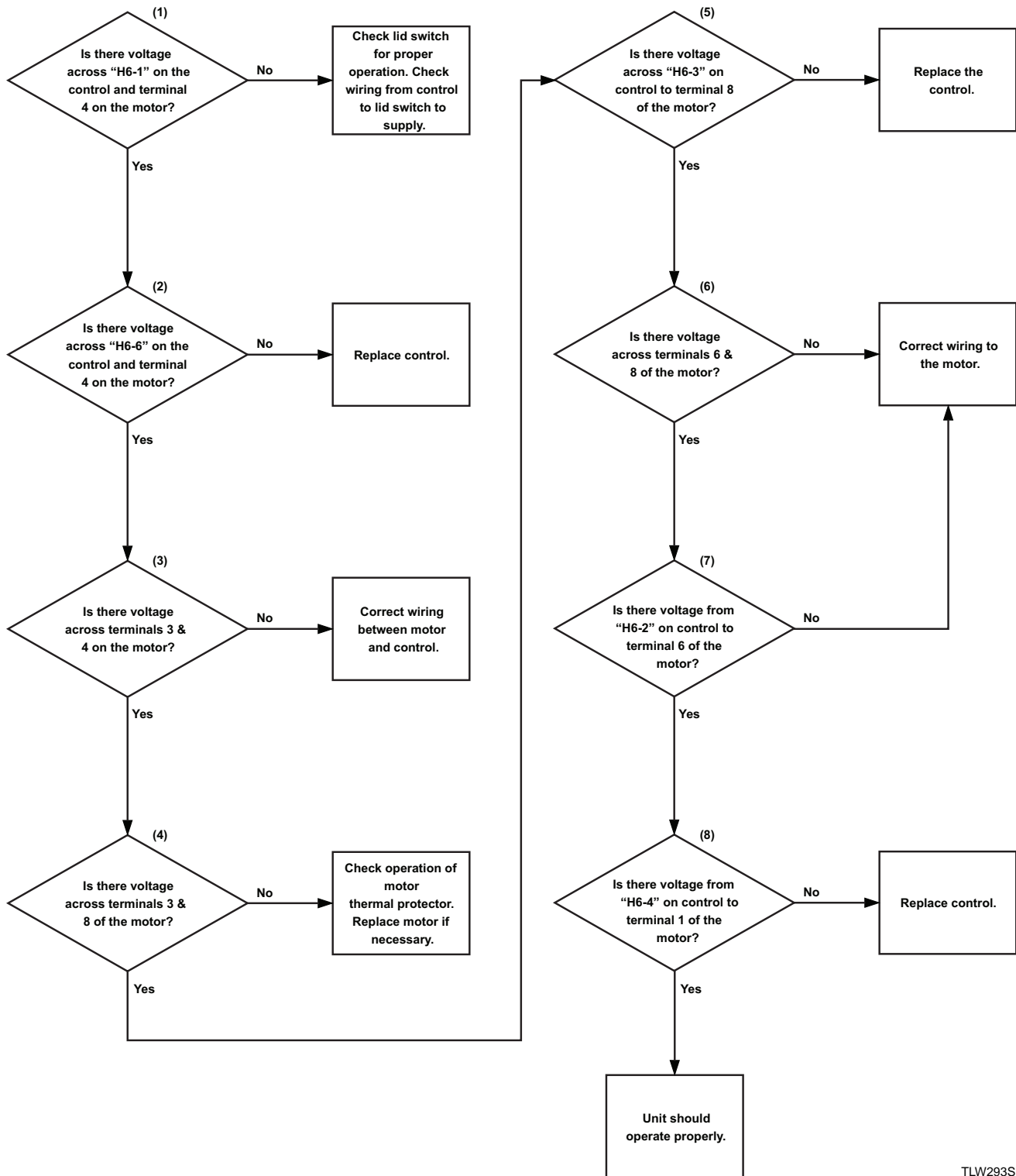
ERROR CODE TABLE	
DIAGNOSTIC LED ERROR INDICATOR ON CONTROL AND "IN USE" LIGHT WILL FLASH AN ERROR CODE IF MACHINE CONTROL SENSES A FAULT.	
LEDS WILL FLASH ERROR CODE FOLLOWED BY A 1.5 SECOND PAUSE.	
ERROR CODE 2 (TWO FLASHES): FILL ERROR	
ERROR CODE 3 (THREE FLASHES): DRAIN ERROR	
(DISCONNECT POWER TO MACHINE TO CLEAR ERROR CODES)	
(SEE INSTALLATION MANUAL FOR ERROR DETAILS)	



PART NO. 202339

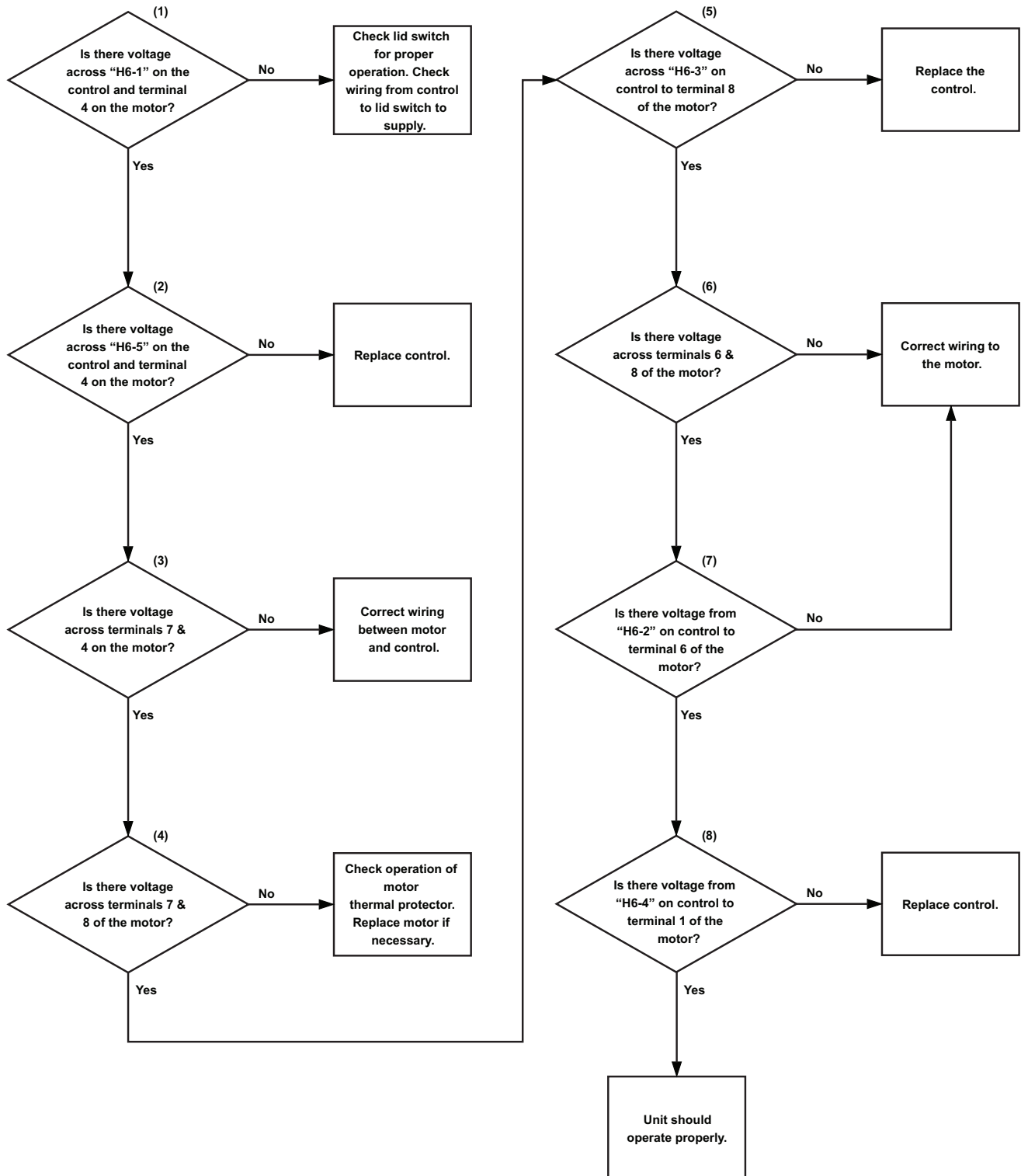
TLW466S

27. Washer Will Not Spin – Low Speed



TLW293S

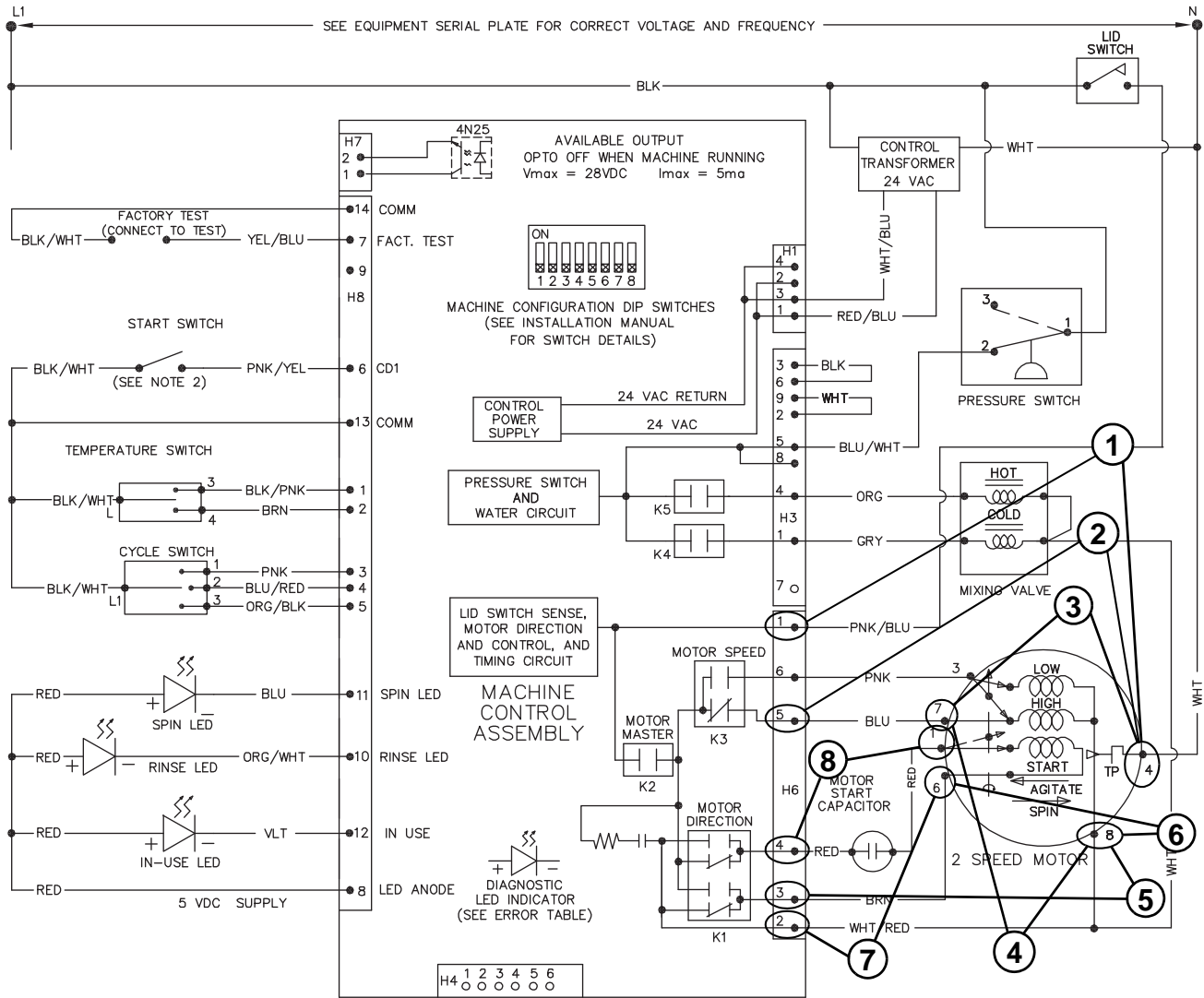
28. Washer Will Not Spin – High Speed



TLW291S

Washer Will Not Spin – High Speed

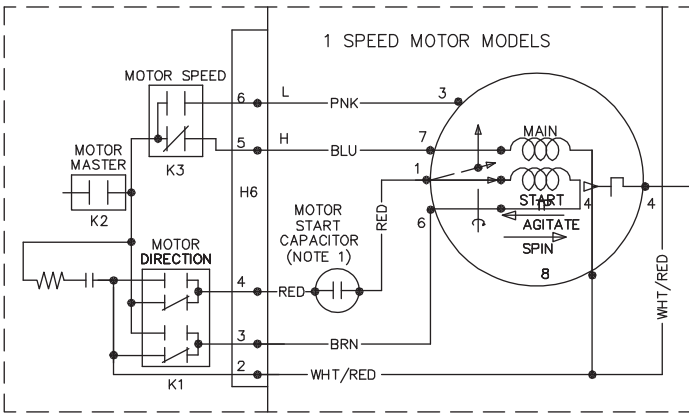
SCHEMATIC DIAGRAM



3 POSITION WASH TEMPERATURE SWITCH	
WHITES/HOT	L-3
COLORS/WARM	L-3-4
DELICATES/COLD	L-4

6 POSITION FABRIC/CYCLE SWITCH	
OFF	L1-1-3
NORMAL	L1-1
PERM. PRESS	L1-1-2
DELICATE	L1-3
RINSE AND SPIN	L1-2
SPIN ONLY	L1-2-3

ERROR CODE TABLE	
DIAGNOSTIC LED ERROR INDICATOR ON CONTROL AND "IN USE" LIGHT WILL FLASH AN ERROR CODE IF MACHINE CONTROL SENSES A FAULT.	
LEDS WILL FLASH ERROR CODE FOLLOWED BY A 1.5 SECOND PAUSE.	
ERROR CODE 2 (TWO FLASHES): FILL ERROR	
ERROR CODE 3 (THREE FLASHES): DRAIN ERROR	
(DISCONNECT POWER TO MACHINE TO CLEAR ERROR CODES)	
(SEE INSTALLATION MANUAL FOR ERROR DETAILS)	



PART NO. 202339

TLW466S

Section 5

Adjustments



WARNING

To reduce the risk of electric shock, fire, explosion, serious injury or death:

- Disconnect electric power to the washer before servicing.
- Never start the washer with any guards/panels removed.
- Whenever ground wires are removed during servicing, these ground wires must be reconnected to ensure that the washer is properly grounded.

W003

29. Leveling Legs

Refer to *Figure 1*.

- Place rubber feet on all four leveling legs.
- Place washer in position on a clean, dry, and reasonably firm floor.
- Loosen locknuts and adjust two front leveling legs. Once adjusted, tilt washer forward on front legs and lower back down into position to set the rear self-leveling legs.
- Washer must not rock. After washer is at desired height, tighten locknuts securely against bottom of washer base. If these locknuts are not tight, washer will not remain stationary during operation.

NOTE: Improper installation, installation on carpet or flexing of a weak floor will cause excessive vibration.

IMPORTANT: Do not slide washer across floor once leveling legs have been extended, as legs and base could become damaged.

30. Belt (Agitate And Spin)

No belt adjustment is required.

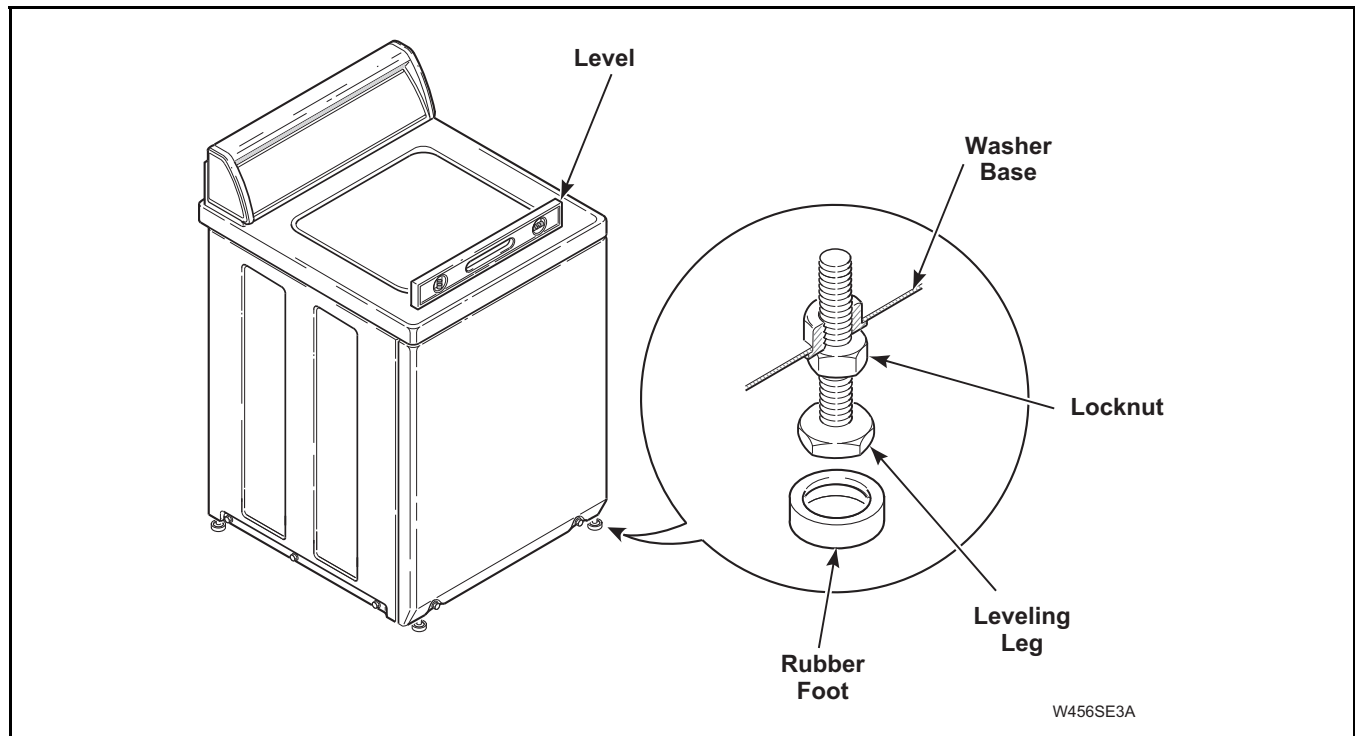



Figure 1


Section 6

Test Procedures

	WARNING
<p>To reduce the risk of electric shock, fire, explosion, serious injury or death:</p> <ul style="list-style-type: none"> • Disconnect electric power to the washer before servicing. • Never start the washer with any guards/panels removed. • Whenever ground wires are removed during servicing, these ground wires must be reconnected to ensure that the washer is properly grounded. 	
W003	

31. Motor Test Procedure

IMPORTANT: Disconnect base wire harness plug from motor.

	WARNING
<p>Disconnect electric power to washer before performing the following steps:</p>	
W188	


Motor test procedures using an Ohm meter.

NOTE: Resistance readings slightly out of given ranges may be due to meter conditions. These readings **DO NOT** necessarily indicate motor failure.

Meter Connections		Reading Should Be	If Not
1.	Ground to Each Other Terminal	Open	Terminal shorted to ground.
2.	White to Yellow	Closed	Open thermal overload.
3.	Red to Brown	2-8 Ohms	Start winding open or resistance too high or too low.
4.	Blue to White	1-2 Ohms	High speed winding (4 pole) open or resistance too high or too low.
5.	Violet to White (2-speed motor)	2.5 Ohms (Approximate)	Low winding opening; High speed winding open; or resistance too high or too low.
6.	“R” to Red	Closed	Open start (auxiliary) switch.
7.	“P” to Blue (2-speed motor)	Closed	Open start switch 4 pole winding.

NOTE: Steps 8, 9 and 10 are with motor centrifugal mechanism in the run position.

8.	“R” to Red	Open	Start auxiliary switch.
9.	“P” to Blue (2-speed motor)	3 Ohms (approximate)	Refer to Blue to White and Violet to White.
10.	“P” to Blue (2-speed motor)	Closed	Open low (6 pole) winding run switch.

	WARNING
<p>To reduce the risk of electric shock, fire, explosion, serious injury or death:</p> <ul style="list-style-type: none"> Disconnect electric power to the washer before servicing. Never start the washer with any guards/panels removed. Whenever ground wires are removed during servicing, these ground wires must be reconnected to ensure that the washer is properly grounded. 	
<small>W003</small>	

32. Mixing Valve Solenoid Test Procedure

Mixing valve test procedures using an Ohm meter.

NOTE: Resistance readings slightly out of given ranges may be due to meter conditions. These readings **DO NOT** necessarily indicate mixing valve failure.

120 Volt coils	900 - 1100 Ohms
240 Volt coils	3200 - 4000 Ohms

33. Temperature Switch Test Procedure

Check for continuity between the following terminal connections:

3 Position Switches

Temperature		Connection
Wash	Rinse	
Hot	Cold	L - 3
Warm	Cold	L - 3- 4
Cold	Cold	L - 4

4 Position Switches

Temperature		Connection
Wash	Rinse	
Hot	Cold	L1 - 2
Warm	Warm	L1 - 1, L1 - 2, L2 - 2, L2 - 1, L2 - L1, 1 - 2
Warm	Cold	L1 - 2, L1 - 1, 1 - 2
Cold	Cold	L1 - 1

Section 7

Cycle Sequence Charts

NOTE: Times listed are approximate.

CYCLE	FUNCTION	WATER TEMP. SELECT	*MOTOR SPEED	TIME (Min. & Sec.)
SOAK	SOAK, FILL & AGITATE	H,W,C	SLOW	4:00
	SOAK, FILL	H,W,C		12:00
	SPIN		SLOW	4:00
OFF				4:00
REGULAR	WASH, FILL & AGITATE	H,W,C	FAST	15:30
	SPIN		FAST	2:00
	SPIN & SPRAY	C	FAST	:30
	SPIN		FAST	1:30
	RINSE FILL & AGITATE	W,C	FAST	4:00
	SPIN		FAST	6:00
OFF				4:00
PERMANENT PRESS	WASH, FILL & AGITATE	H,W,C	FAST	9:30
	SPIN		SLOW	2:00
	SPIN & SPRAY	C	SLOW	:30
	SPIN		SLOW	1:30
	RINSE FILL & AGITATE	W,C	FAST	4:00
	SPIN		FAST	6:00
OFF				4:00
DELICATE	WASH, FILL & SOAK	H,W,C		3:00
	WASH, FILL & AGITATE	H,W,C	SLOW	:30
	WASH, FILL & SOAK	H,W,C		1:30
	WASH FILL & AGITATE	H,W,C	SLOW	:30
	WASH FILL & SOAK	H,W,C		1:30
	WASH FILL & AGITATE	H,W,C	SLOW	:30
	WASH FILL & SOAK	H,W,C		1:30
	WASH FILL & AGITATE	H,W,C	SLOW	:30
	WASH FILL & SOAK	H,W,C		1:30
	SPIN		SLOW	2:00
	SPIN & SPRAY	C	SLOW	:30
	SPIN		SLOW	1:30
	RINSE FILL & AGITATE	C	SLOW	4:00
	SPIN		SLOW	4:00
OFF				4:00

*On Single Speed Model Washers, All Speeds are Fast.

KEY:

H = HOT

W = WARM

C = COLD

TIMER NO. 37927P CYCLE SEQUENCE

Cycle Sequence Charts

NOTE: Times listed are approximate.

CYCLE	FUNCTION	WATER TEMP. SELECT	*MOTOR SPEED	TIME (Min. & Sec.)
SOAK	SOAK, FILL & AGITATE	H,W,C	SLOW	3:00
	SOAK, FILL	H,W,C		12:00
	SPIN		SLOW	3:00
OFF				3:00
PRE-WASH	WASH, FILL & AGITATE	H,W,C	FAST	6:00
	SPIN		FAST	3:00
REGULAR	WASH, FILL & AGITATE	H,W,C	FAST	15:30
	SPIN		FAST	3:00
	SPIN & SPRAY	C	FAST	:25
	SPIN		FAST	2:35
	RINSE FILL & AGITATE	W,C	FAST	3:00
	SPIN		FAST	6:00
OFF/PAUSE	CYCLE END OR PAUSE FOR EXTRA RINSE			3:00
EXTRA RINSE	RINSE, FILL & AGITATE	W,C	FAST	3:00
	SPIN		FAST	6:00
OFF				OFF
PERMANENT PRESS	WASH, FILL & AGITATE	H,W,C	FAST	9:30
	SPIN		SLOW	3:00
	SPIN & SPRAY	C	SLOW	:25
	SPIN		SLOW	2:35
	RINSE FILL & AGITATE	W,C	FAST	3:00
	SPIN		FAST	6:00
OFF/PAUSE	CYCLE END OR PAUSE FOR EXTRA RINSE			3:00
EXTRA RINSE	RINSE, FILL & AGITATE	W,C	FAST	3:00
	SPIN		FAST	6:00
OFF				3:00
DELICATE	WASH, FILL & SOAK	H,W,C		3:00
	WASH, FILL & AGITATE	H,W,C	SLOW	:25
	WASH, FILL & SOAK	H,W,C		2:35
	WASH FILL & AGITATE	H,W,C	SLOW	:25
	WASH FILL & SOAK	H,W,C		2:35
	SPIN		SLOW	3:00
	SPIN & SPRAY	C	SLOW	:25
	SPIN		SLOW	2:35
	RINSE FILL & AGITATE	C	SLOW	3:00
	SPIN		SLOW	3:00

(continued on next page)

TIMER NO. 38881P CYCLE SEQUENCE

Cycle Sequence Charts

OFF/PAUSE	CYCLE END OR PAUSE FOR EXTRA RINSE			3:00
EXTRA RINSE	RINSE, FILL & AGITATE	C	SLOW	3:00
	SPIN		SLOW	3:00
OFF				3:00

*On Single Speed Model Washers, All Speeds are Fast.

KEY:

H = HOT W = WARM C = COLD

TIMER NO. 38881P CYCLE SEQUENCE

Cycle Sequence Charts

NOTE: Times listed are approximate.

CYCLE	FUNCTION	WATER TEMP. SELECT	*MOTOR SPEED	TIME (Min. & Sec.)
REGULAR	WASH, FILL & AGITATE	H,W,C	FAST	15:00
	SPIN		FAST	1:30
	SPIN & SPRAY	C	FAST	:25
	SPIN		FAST	2:35
	RINSE FILL & AGITATE	W,C	FAST	3:00
	SPIN		FAST	6:00
OFF				3:00
PERMANENT PRESS	WASH, FILL & AGITATE	H,W,C	FAST	9:00
	SPIN		FAST	1:30
	SPIN & SPRAY	C	FAST	:25
	SPIN		FAST	2:35
	RINSE FILL & AGITATE	W,C	FAST	3:00
	SPIN		FAST	6:00
OFF				3:00
DELICATE	WASH, FILL & SOAK	H,W,C		1:30
	WASH, FILL & AGITATE	H,W,C	FAST	:25
	WASH, FILL & SOAK	H,W,C		2:35
	WASH FILL & AGITATE	H,W,C	FAST	:25
	WASH FILL & SOAK	H,W,C		2:35
	WASH FILL & AGITATE	H,W,C	FAST	:25
	WASH FILL & SOAK	H,W,C		1:05
	SPIN		FAST	1:30
	SPIN & SPRAY	C	FAST	:25
	SPIN		FAST	2:35
	RINSE FILL & AGITATE	C	FAST	3:00
	SPIN		FAST	3:00
OFF				3:00

***On Single Speed Model Washers, All Speeds are Fast.**

KEY:

H = HOT W = WARM C = COLD

TIMER NO. 200927P CYCLE SEQUENCE

Cycle Sequence Charts

NOTE: Times listed are approximate.

CYCLE	FUNCTION	WATER TEMP. SELECT	*MOTOR SPEED	TIME (Min. & Sec.)
SOAK	SOAK, FILL & AGITATE	H,W,C	SELECT	3:00
	SOAK, FILL	H,W,C		12:00
	SPIN		SELECT	3:00
OFF				3:00
PRE-WASH	WASH, FILL & AGITATE	H,W,C	SELECT	6:00
	SPIN		SELECT	3:00
REGULAR	WASH, FILL & AGITATE	H,W,C	SELECT	15:00
	SPIN		SELECT	3:00
	SPIN & SPRAY	C	SELECT	:25
	SPIN		SELECT	2:35
	RINSE FILL & AGITATE	W,C	SELECT	3:00
	SPIN		SELECT	6:00
OFF/PAUSE	CYCLE END OR PAUSE FOR EXTRA RINSE			3:00
EXTRA RINSE	RINSE, FILL & AGITATE	W,C	SELECT	3:00
	SPIN		SELECT	6:00
OFF				OFF
PERMANENT PRESS	WASH, FILL & AGITATE	H,W,C	SELECT	9:00
	SPIN		MEDIUM	3:00
	SPIN & SPRAY	C	MEDIUM	:25
	SPIN		MEDIUM	2:35
	RINSE FILL & AGITATE	W,C	SELECT	3:00
	SPIN		SELECT	6:00
OFF/PAUSE	CYCLE END OR PAUSE FOR EXTRA RINSE			3:00
EXTRA RINSE	RINSE, FILL & AGITATE	W,C	SELECT	3:00
	SPIN		SELECT	6:00
OFF				3:00
DELICATE	WASH, FILL & SOAK	H,W,C		3:00
	WASH, FILL & AGITATE	H,W,C	MEDIUM	:25
	WASH, FILL & SOAK	H,W,C		2:35
	WASH FILL & AGITATE	H,W,C	MEDIUM	:25
	WASH FILL & SOAK	H,W,C		2:35
	SPIN		MEDIUM	3:00
	SPIN & SPRAY	C	MEDIUM	:25
	SPIN		MEDIUM	2:40
	RINSE FILL & AGITATE	C	MEDIUM	3:00
	SPIN		MEDIUM	3:00
OFF/PAUSE	CYCLE END OR PAUSE FOR EXTRA RINSE			3:00

(continued on next page)

TIMER NO. 37922P CYCLE SEQUENCE

Cycle Sequence Charts

EXTRA RINSE	RINSE, FILL & AGITATE	C	MEDIUM	3:00
	SPIN		MEDIUM	3:00
OFF				3:00
HANDWASH	WASH, FILL & SOAK	H,W,C		3:00
	WASH, FILL & AGITATE	H,W,C	SLOW	:25
	WASH, FILL & SOAK	H,W,C		2:35
	WASH FILL & AGITATE	H,W,C	SLOW	:25
	WASH FILL & SOAK	H,W,C		2:35
	SPIN		MEDIUM	3:00
	SPIN & SPRAY	C	MEDIUM	:25
	SPIN		MEDIUM	2:40
	RINSE FILL & AGITATE	C	SLOW	3:00
	SPIN		MEDIUM	3:00
OFF				3:00

***On Single Speed Model Washers, All Speeds are Fast.**

KEY:

H = HOT W = WARM C = COLD

TIMER NO. 37922P CYCLE SEQUENCE

Cycle Sequence Charts

NOTE: Times listed are approximate.

CYCLE	FUNCTION	WATER TEMP. SELECT	*MOTOR SPEED	TIME (Min. & Sec.)
SOAK/ PREWASH	SOAK FILL & AGITATE	H,W,C	SLOW	3:00
	SOAK FILL	H,W,C		12:00
	SPIN		SLOW	3:00
OFF				6:00
HEAVY DUTY/ PERMANENT PRESS	WASH FILL & AGITATE	H,W,C	FAST	15:00
	SPIN		SLOW	3:00
	SPIN & SPRAY	C	SLOW	:24
	SPIN		SLOW	3:00
	RINSE FILL & AGITATE	C	FAST	3:00
	SPIN		FAST	6:00
OFF/PAUSE	CYCLE END OR PAUSE FOR EXTRA RINSE			3:00
EXTRA RINSE	RINSE FILL & AGITATE	C		3:00
	SPIN		FAST	6:00
OFF				6:00
NORMAL ECO	WASH FILL & AGITATE	C	FAST	9:00
	SPIN		SLOW	3:00
	SPIN & SPRAY	C	SLOW	:24
	SPIN		SLOW	3:00
	SPIN & SPRAY	C	SLOW	:24
	SPIN		SLOW	3:00
	SPIN & SPRAY	C	SLOW	:24
	SPIN		SLOW	3:00
	SPIN		FAST	9:00
OFF				6:00
DELICATE	WASH FILL & SOAK	H,W,C		3:00
	WASH FILL & AGITATE	H,W,C	SLOW	:24
	WASH FILL & SOAK	H,W,C		2:30
	WASH FILL & AGITATE	H,W,C	SLOW	:24
	WASH FILL & SOAK	H,W,C		2:30
	SPIN		SLOW	3:00
	SPIN & SPRAY	C	SLOW	:24
	SPIN		SLOW	3:00
	RINSE FILL & AGITATE	C	SLOW	3:00
	SPIN		SLOW	3:00
OFF/PAUSE	CYCLE END OR PAUSE FOR EXTRA RINSE			3:00
EXTRA RINSE	RINSE FILL & AGITATE	C		3:00
	SPIN		SLOW	3:00
OFF	OFF			6:00

TIMER NO. 202705 AND 203387 CYCLE SEQUENCE

Cycle Sequence Charts

***On Single Speed Model Washers, All Speeds are Fast.**

KEY:

H = HOT

W = WARM

C = COLD

TIMER NO. 202705 AND 203387 CYCLE SEQUENCE

		LIGHTS			WATER TEMP.	CYCLE & MOTOR SPEED *	TIME (Minutes and Seconds)
FUNCTION		IN USE	RINSE	SPIN			
WASH	FILL	X			H, W, C		2:00
	AGITATE	X				N & PP = FAST D = SLOW	N & PP = 4:00 D = 0:25
	PAUSE	X		**			N & PP = 1:30 D = 2:30
	AGITATE	X				N & PP = FAST D = SLOW	N & PP = 4:00 D = 0:25
	PAUSE	X		**			N & PP = 1:30 D = 2:30
	AGITATE	X				N & PP = FAST D = SLOW	N & PP = 4:00 D = 0:25
	PAUSE	X		**			N & PP = 0:15 D = 2:30
	SPIN 1	X				FAST	1:00
	PAUSE	X					0:30
RINSE	SPIN/FILL 1	X	X		C	FAST	0:16
	SPIN	X	X			FAST	0:16
	PAUSE 1	X	X				0:30
	SPIN/FILL 2	X	X		C	FAST	0:16
	SPIN	X	X			FAST	0:16
	PAUSE 2	X	X				0:30
	SPIN/FILL 3	X	X		C	FAST	0:16
	PAUSE 3	X	X				0:30
	SPIN/FILL 4	X	X		C	FAST	0:16
	PAUSE 4	X	X				0:30
SPIN	FINAL SPIN	X		X		FAST	5:00
TOTAL							N & PP = 25:26 D = 18:51

*On single speed models, all speeds are fast.

**On delicate cycle, all LEDs flashing during soak period.

KEY:

H = HOT
W = WARM
C = COLD
N = NORMAL CYCLE
PP = PERMANENT PRESS CYCLE
D = DELICATE CYCLE
X = INDICATOR LIGHT GLOWS

CYCLE SEQUENCE FOR MODEL AUNA11SP111TW01 – NORMAL, PERMANET PRESS, DELICATE CYCLES

Cycle Sequence Charts

		LIGHTS					TIME (Minutes and Seconds)	
FUNCTION		IN USE	RINSE	SPIN	WATER TEMP.	CYCLE & MOTOR SPEED *	RINSE & SPIN CYCLE	SPIN ONLY CYCLE
RINSE	FILL	X	X		C		2:00	0:00
	AGITATE	X	X			FAST	4:00	0:00
	PAUSE	X	X				0:10	0:00
SPIN	SPIN 1	X	X			FAST	0:45	0:00
	SPIN AND SPRAY	X	X		C	FAST	0:15	0:00
	FINAL SPIN	X		X		FAST	4:00	5:00
TOTAL							9:10	5:00

KEY:

C = COLD
X = INDICATOR LIGHT GLOWS

CYCLE SEQUENCE FOR MODEL AWNA11SP111TW01 – RINSE & SPIN AND SPIN ONLY CYCLES

Section 8

Internal Wiring of Washer Motor Switch

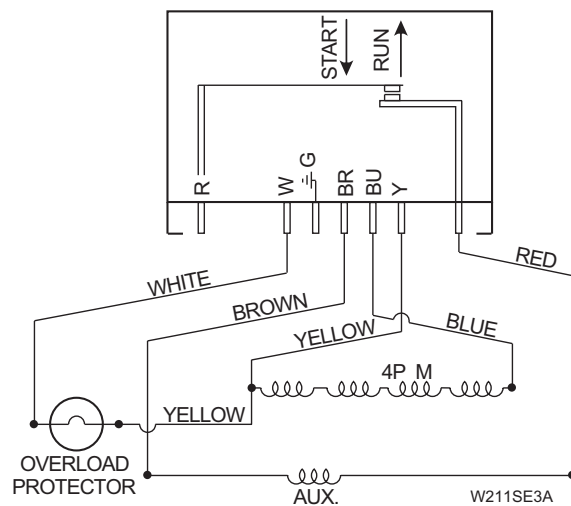
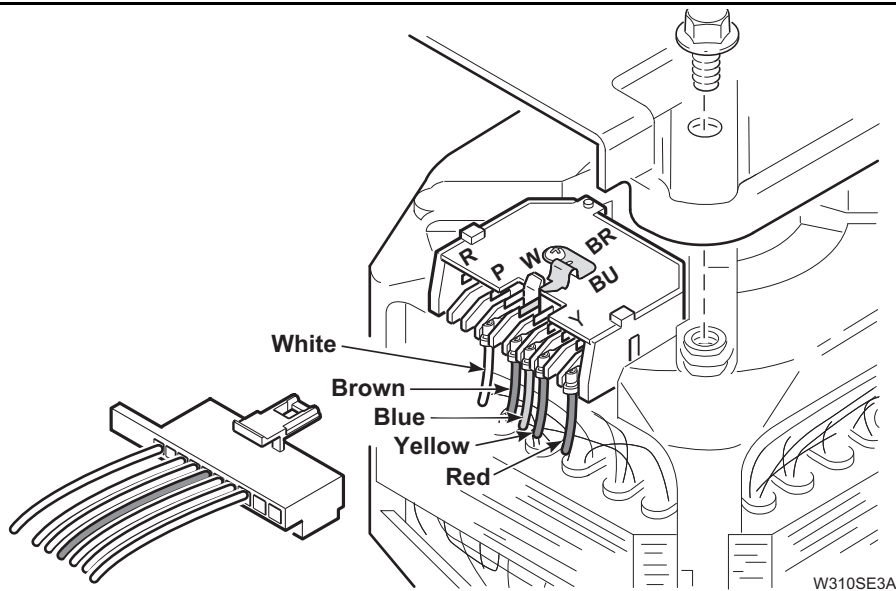


WARNING

To reduce the risk of electric shock, fire, explosion, serious injury or death:

- Disconnect electric power to the washer before servicing.
- Never start the washer with any guards/panels removed.
- Whenever ground wires are removed during servicing, these ground wires must be reconnected to ensure that the washer is properly grounded.

W003



**MOTOR ASSEMBLY
(1 Speed Motors)**

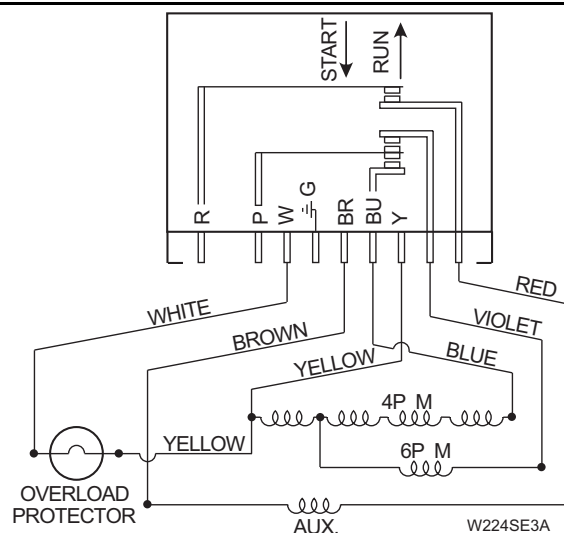
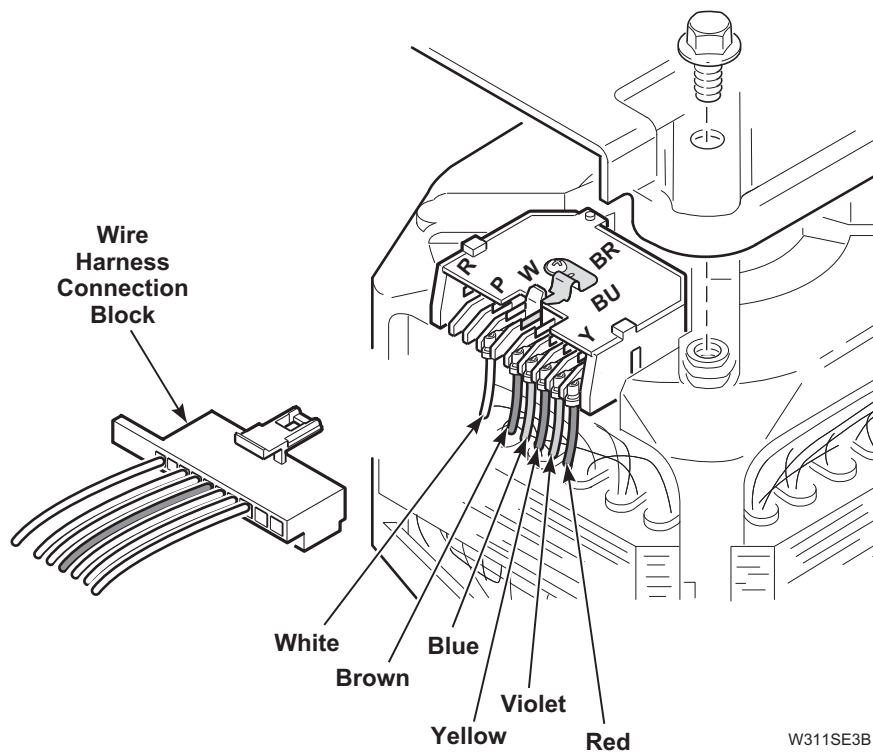


WARNING

To reduce the risk of electric shock, fire, explosion, serious injury or death:

- Disconnect electric power to the washer before servicing.
- Never start the washer with any guards/panels removed.
- Whenever ground wires are removed during servicing, these ground wires must be reconnected to ensure that the washer is properly grounded.

W003



MOTOR ASSEMBLY (2 Speed Motors)

