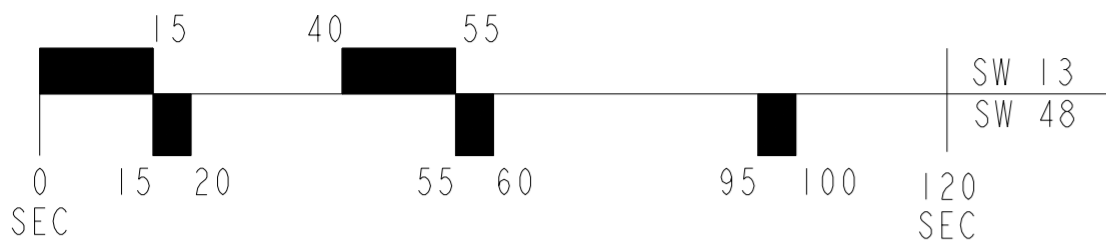


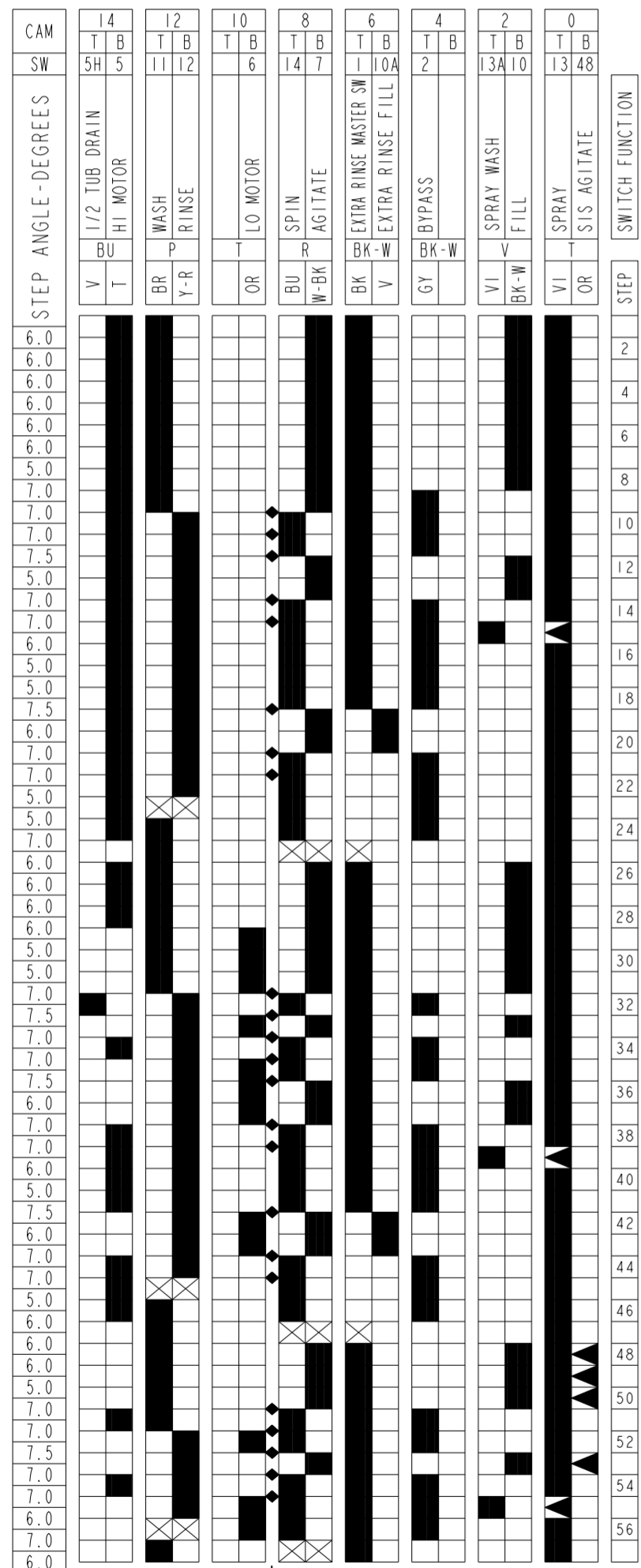
PART NO. NUMERO DE PIECE NUMERO DE PIEZA	REV REVISION REVISION
3954171	C



TIMER SWITCH 48 AND 13
48-INTERMITTENT (SIS) LO AGITATE
13-SPRAY

MANUFACTURED UNDER ONE OR
MORE OF THE FOLLOWING
UNITED STATES PATENTS:

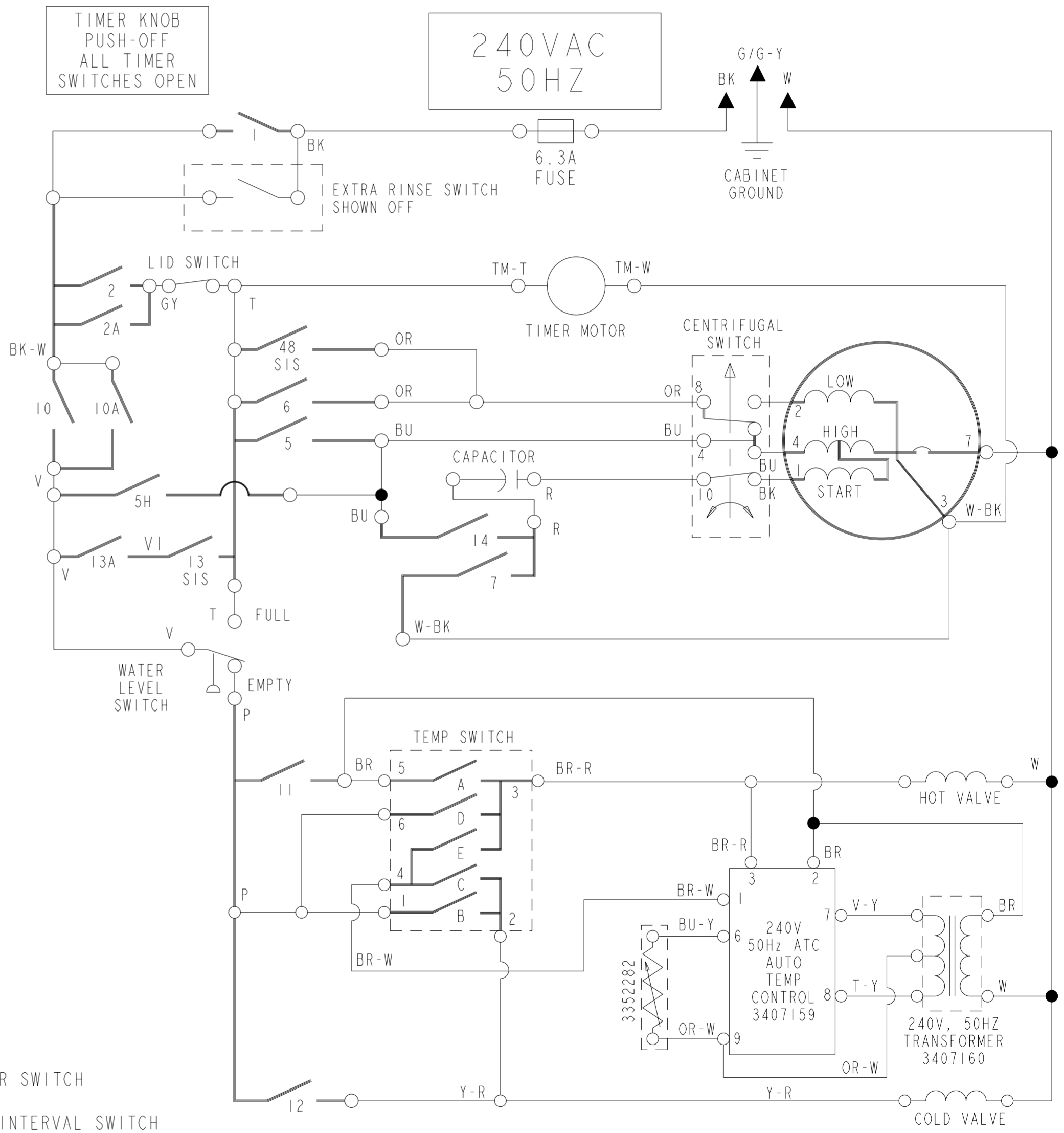
DES. 268,183 3,854,308 4,003,613 4,262,870
3,576,117 3,856,036 4,005,882 4,268,098
3,636,734 3,863,467 4,068,503 4,288,671
3,681,947 3,880,188 4,118,957 4,291,556
3,696,970 3,884,493 4,129,018 4,306,841
3,744,418 3,939,674 4,163,457 4,324,035
3,798,931 3,953,146 4,164,130 4,357,813
3,798,932 3,987,508 4,174,622 4,366,902
3,818,729 3,987,651 4,254,640 4,430,871
3,847,812 4,000,631 4,254,641 4,432,528



120 SECONDS PER STEP

STEP	MACHINE FUNCTION	SWITCH FUNCTION
2	FILL-AGITATE HI	FILL & RINSE
4	FILL-AGITATE HI	FILL & WASH
6	DRY AGITATE	REGULAR
8		
10		
12	FILL AGITATE HI	DRAIN HI
14	SPRAY	SPIN HI
16		
18		
20	FILL-AGITATE HI	FILL & RINSE
22		DRAIN HI
24		SPIN HI
26	OFF	EXTRA RINSE
28	FILL-AGITATE HI	FILL & WASH
30	FILL-AGITATE LO	FILL & WASH
32	1/2 TUB DRAIN HI	COOL DOWN
34	FILL-AGITATE LO	DRAIN HI
36	FILL-AGITATE LO	SPIN LO
38	SPRAY	FILL & RINSE
40		DRAIN HI
42		SPIN HI
44	FILL-AGITATE LO	FILL & RINSE
46		DRAIN HI
48		SPIN HI
50	INTERMITTENT AGITATION 2 SEC ON 28 SEC OFF LO	OFF
52		FILL & WASH
54		DRAIN HI
56		SPIN LO
		WASHABLES
		EXTRA RINSE
		PERMANENT PRESS
		REGULAR

◆ INDICATES MOTOR "OFF"



- LEGEND
- 0 — TIMER SWITCH
 - 13 — SUB-INTERVAL SWITCH
 - INT. COMP CONNECTION
 - HARNESS WIRING
 - — TERMINAL CONNECTION
 - X — TIMER SWITCH MAY BE OPEN OR CLOSED

TEMPERATURE SWITCH CHART					
SWITCH	A	B	C	D	E
NON ATC	HC	X			
WASH ONLY ATC	WC	X	X		
	CC		X		X
	WW	X	X	X	