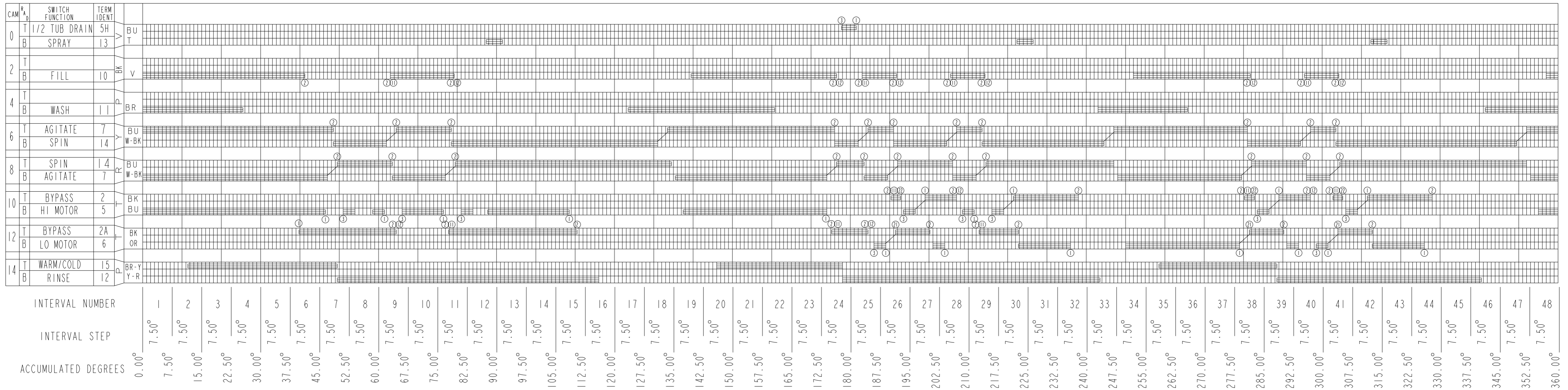
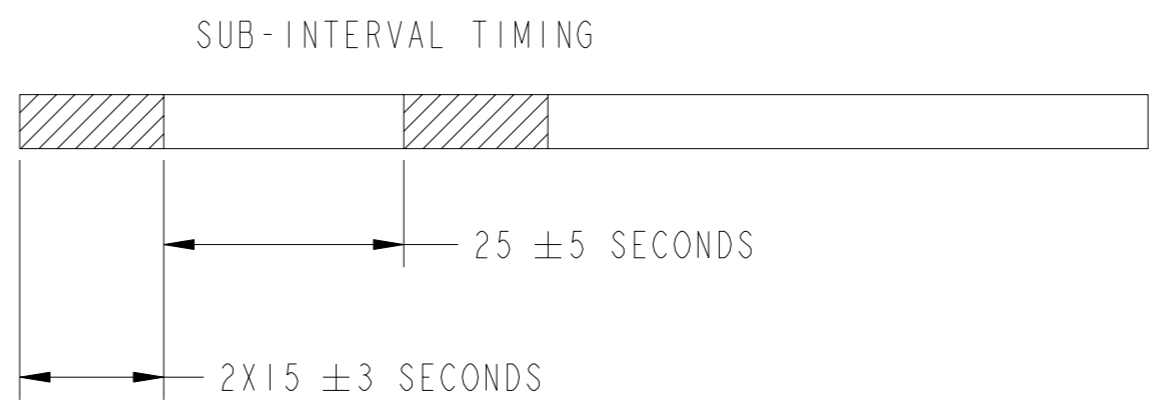


# 120 SECONDS PER STEP

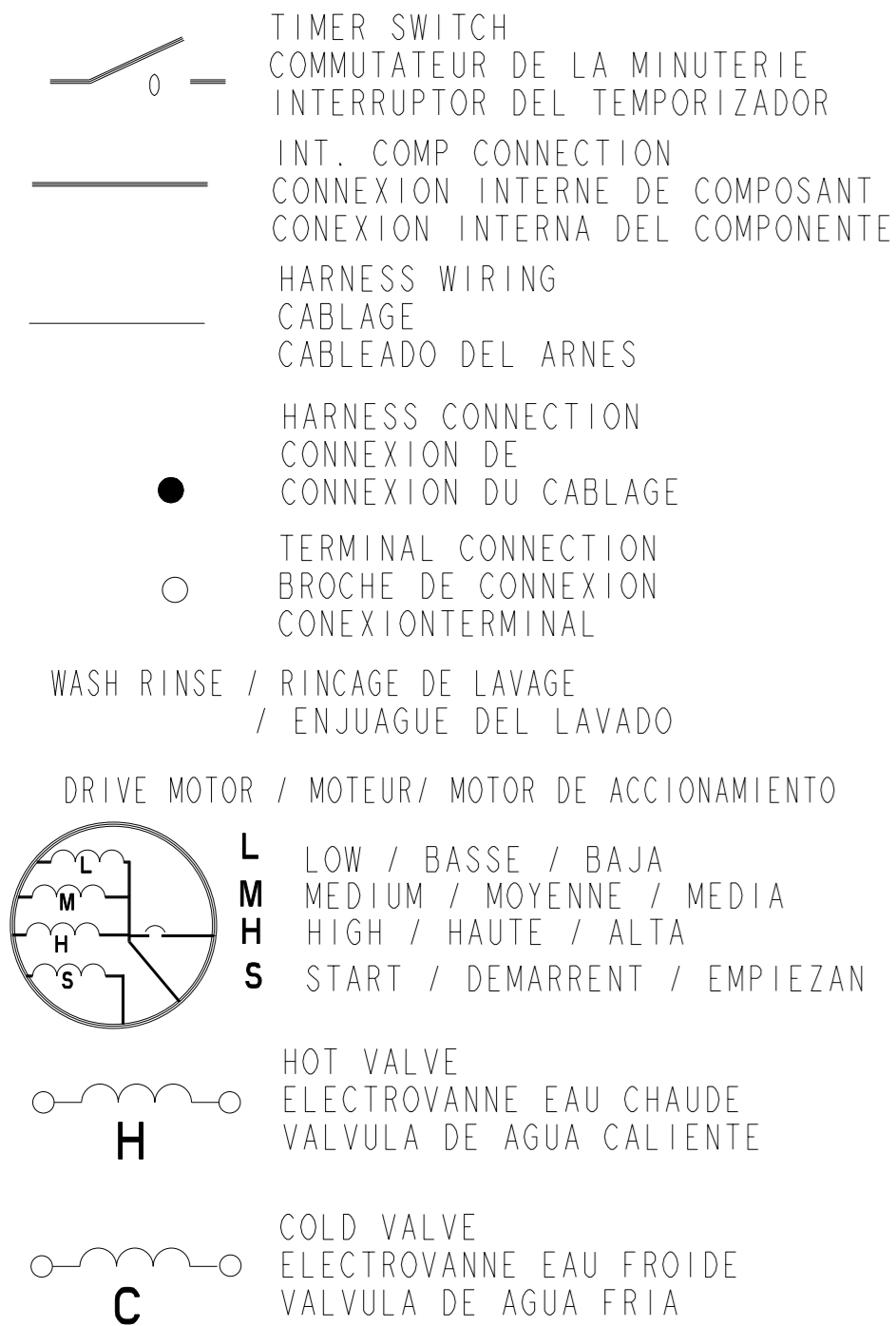
MACHINE FUNCTION CHART FONCTION DE LA MACHINE / FUNCION DE LA MAQUINA	REGULAR - HEAVY REGULIER EMPORTE / REGULAR PESADO	PERMANENT PRESS SYNTHETIQUES / PERMANENTE PRENSA	KNITS TRICOTE / TEJE
HOT	WARM FILL - AGITATE HI	HOT	HOT
WARM FILL - AGITATE HI	WARM FILL - AGITATE HI	WARM FILL - AGITATE HI	WARM FILL - AGITATE LO
COLD	COLD	COLD	COLD
DRY AGITATE HI	DRY AGITATE HI	1/2 TUB DRAIN COOL DOWN	DRAIN HI
DRAIN HI	DRAIN HI	COLD FILL	SPIN LO
SPIN HI	SPIN HI	DRAIN HI	FILL AND RINSE
FILL & RINSE	FILL & RINSE	SPIN LO	DRAIN HI
DRAIN HI	DRAIN HI	FILL AND RINSE	SPRAY
SPRAY	SPRAY	DRAIN HI	SPIN LO
SPIN HI	SPIN HI	SPIN LO	OFF
OFF	OFF	OFF	OFF



LEGEND	LEGENDE	LEYENDA
1/2 TUB DRAIN	1/2 COVETTE VID	DREN DE LA TINA DEL 1/2
SPRAY	GICLAGE	AEROSOL
BYPASS	DERIVATION	PUENTE
FILL	REPLISSAGE	LLENAN
AGITATE	AGITER	AGITAN
SPIN	ESSORAGE	VUELTA
HI MOTOR	MOTEUR RAPIDE	ALTO MOTOR
LOW MOTOR	MOTEUR BAS	BAJO MOTOR
WARM/COLD	CHAUDE/FROIDE	CALIENTESE/FRIO
WASH	LAVAGE	COLADA
RINSE	RINCEGE	ACLARACION
DRAIN	VIDENT	DRENAN
DRY/AGITATE	SECHER/AGITER	SECO/AGITAN



LEGEND / LEGENDE / LEYENDA



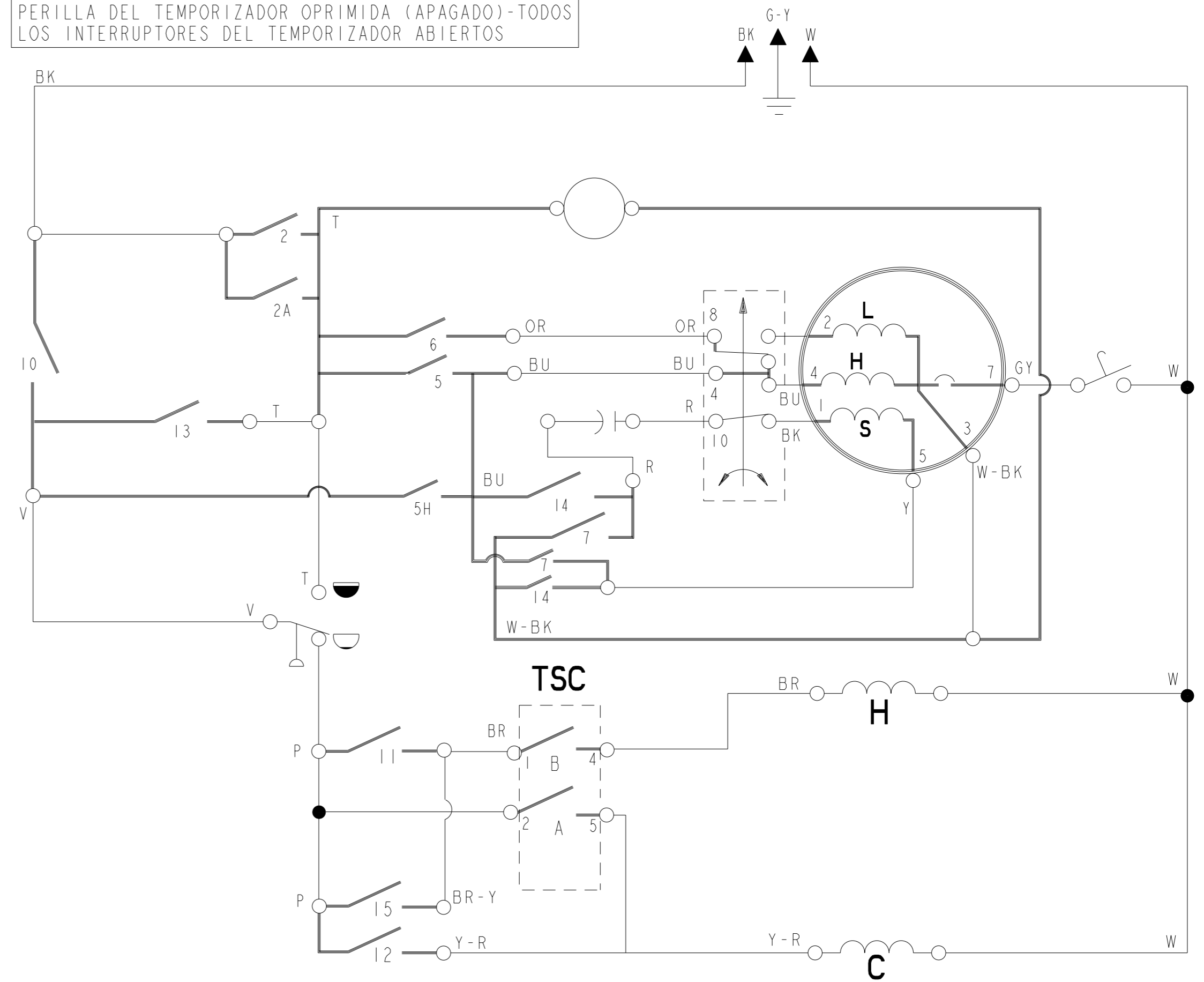
MANUFACTURED UNDER ONE OR MORE  
OF THE FOLLOWING US PATENTS:

4545947, 4555919, 4566295, 4572596, 4618193,  
 4624117, 4643350, 4646545, 4656844, 4656847,  
 4692987, 4693095, 4697293, 4700554, 4709951,  
 4715401, 4719769, 4754622, 4759202, 4774822,  
 4779431, 4782544, 4784666, 4785643, 4793820,  
 4807452, 4809524, 4835991, 4854559, 4856303,  
 4870988, 4888965, 4890465, 4891959, 4910979,  
 4945735, 4947516, 4969341, 4972134, 4977394,  
 4986093, 4987627, 5000016, 5031427, 5033277,  
 5074003, 5075613, 5113542, 5130624, 5150588,  
 5154071, 5166568, 5167722, 5172573, 5177659,  
 5191667, 5191668, 5191669, 5193361, 5199127,  
 5199281, 5200684, 5205141, 5219370, 5233718,  
 5249441, 5255844, 5257901, 5259217, 5269160,  
 5271251, 5297403, 5305485, 5312138, 5314044,  
 5345637, 5345792, 5345793, 5359744, 5373715,  
 5460018, 5493745, 5504955, 5507053, 5515565,  
 5582039, 5582199, 5651278, 5671494, 5765404,  
 5784902, 5791167, 5836180, 5852942, 5875655,  
 5878602, 5883490, 5946946, 6065171, 6070282,  
 6105403, 6115863, 6125490, 6185774, 6212722,  
 6227013, 6227014, 6269666, 6347645, 6363563,  
 6393872, 6430971, 6505370, D314263, D375390,  
 D381140, D423740, D426686, D456572,  
 D459844, D463631, D465308

FABRIQUE SOUS UN OU PLUSIEURS  
 DES BREVETS CANADIENS SUIVANTS:  
 1228410, 1233039, 1233658, 1282557,  
 1287338, 1288966, 1298988, 1301469,  
 1306367, 1313770, 2018975, 2022266,  
 2043393, 2056969, 2086151, D76618

MANUFACTURADO BAJO UNA O MAS DE  
 LAS SIGUIENTES PATENTES MEXICANAS:  
 159840, 159983, 161744, 163722, 164305,  
 164407, 165938, 165992, 170221, 174138,  
 174478, 174483, 177764, 177766, 181185,  
 182183, 182396, 182632, 187728, 189682,  
 189766, 192502, 192503, 198393, 199844,  
 205519, 211042

TIMER KNOB PUSH OFF ALL TIMER SWITCHES OPEN  
 BOUTON DE LA MINUTERIE ENFONCE (ARRET)-TOUS LES  
 AUTRES COMMUTEURS DE LA MINUTERIE OUVERTS  
 PERILLA DEL TEMPORIZADOR OPRIMIDA (APAGADO)-TODOS  
 LOS INTERRUPTORES DEL TEMPORIZADOR ABIERTOS



TSC			
SWITCH CONTACTEUR INTERRUPTOR	H/C	W/C	C/C
A		X	X
B	X	X	