

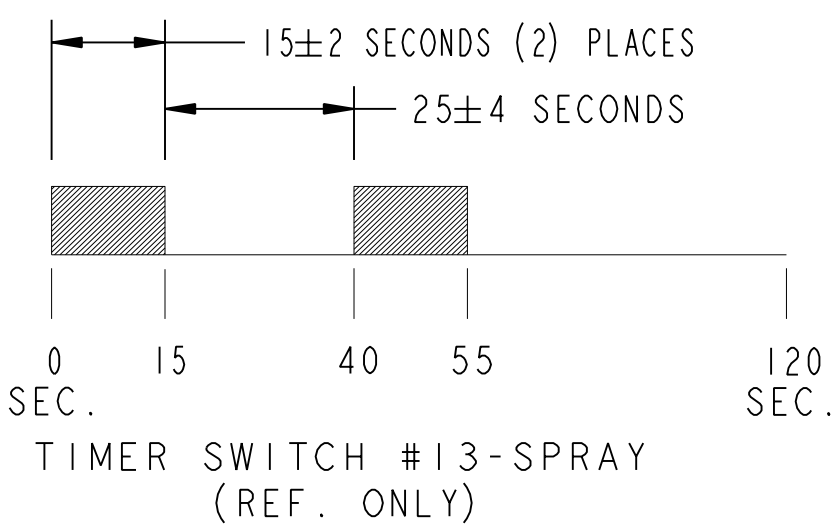
120 SECONDS PER STEP

MACHINE FUNCTION

TERM.	SW.	FUNCTION
2		FILL-AGITATE HI
4		FILL WASH
6		FILL-AGITATE HI
8		FILL-AGITATE LO
10		DRY AGITATE LO
12		FILL-AGITATE HI
14		SPRAY
16		SPIN HI
18		OFF
20		FILL-AGITATE HI
22		FILL-AGITATE LO
24		1/2 TUB DRAIN HI
26		FILL-AGITATE LO
28		FILL-AGITATE HI
30		SPRAY
32		OFF
34		FILL-AGITATE LO
36		FILL-AGITATE LO
38		FILL-AGITATE LO
40		SPRAY
42		OFF
44		FILL-AGITATE HI
46		FILL
48		FILL
50		FILL
52		FILL-AGITATE HI
54		OFF

◆ INDICATES MOTOR OFF 6.5 SEC MAX 2.2 SEC MIN.

⊠ INDICATES TIMER SWITCH MAY BE OPEN OR CLOSED



(CHART FOR NOTE NO. 1.12.)

NOTE	ENTER STEP	TIMER CAM SWITCH SEQUENCE		
		FIRST	SECOND	THIRD
A	1,19	10B "ON"	2B AS EARLY AS POSSIBLE	
B	8,22	10B "OFF"- 12B "ON" AS FAST AS POSSIBLE		
C	9	2T BEFORE 14T	14T AS EARY AS POSSIBLE	
D	10	12B "OFF"	CAM 6	
		CAM 8		10B "ON"
E	11,54	10B "OFF"5 SEC. +1.5 -2.8		10B "ON"
F	12	10B "OFF"	CAM 2 CAM 8	
		CAM 6		10B "ON"
G	14,29,53	10B "OFF"	2T BEFORE 14T CAM 6	
		CAM 8		10B "ON"
H	15	10B "OFF"5 SEC. +1.5 -2.8	10B "ON" SPRAY SEE NOTE 1.8.	
J	18,55	10B "OFF"	2T AS LATE AS POSSIBLE	
K	24	12B "OFF"	2T BEFORE 14T CAM 6	
		CAM 8		10T "ON"
L	25	10T "OFF"	CAM 2 CAM 8	
		CAM 6		12B "ON" 14T "ON"
M	26,36,39	12B "OFF"	2T BEFORE 14T CAM 6	
		CAM 8		10B "ON"
N	27,37	10B "OFF" 5 SEC. +1.5 -2.8		
P	28	12B "OFF"	CAM 2 CAM 8	
		CAM 6		10B "ON" 14T "ON"
Q	30,40	10B "OFF"5 SEC. +1.5 -2.8	12B "ON" SPRAY SEE NOTE 1.8.	
R	32,42	12B "OFF"	2T AS LATE AS POSSIBLE	
S	33	12B "ON"	2B AS EARLY AS POSSIBLE	
T	38	12B "OFF"	CAM 2 CAM 8	
		CAM 6		12B "ON" 14T "ON"
U	43	10B "ON"	OB AS EARLY AS POSSIBLE	
V	45	10B "OFF" AS LATE AS POSSIBLE		
W	51	10B "ON"	2B BEFORE 0B	

LEGEND	LEGENDE	LEYENDA	LEGEND	LEGENDE	LEYENDA
1/2 TUB DRAIN	1/2 COVETTE VID	DREN DE LA TINA DEL 1/2	SWITCH FUNCTION	COMMUTEZ LA FONCTION	CAMBIE LA FUNCTION
SPRAY	GICLAGE	AEROSOL	CAM	CAME	LEVA
BYPASS	DERIVATION	PUENTE	OFF	ARRET	DE
FILL	REPLISSAGE	LLENAN	COOL DOWN	REFROIDISSEZ	REFRESQ'UESE ABAJO
AGITATE	AGITATION	AGITAR	SPIN LOW	ESSORAGE BASSE	EXPRIMIDO BAJA
SPIN	DEMARRAGE	INICIAR	RINSE LOW	RINCAGE BASSE	ACLARACION BAJA
HI MOTOR	HAUTE RAPIDE	ALTA MOTOR	WASH LOW	LAVAGE BASSE	LAVADO BAJA
LOW MOTOR	BASSE MOTEUR	ALTA MOTOR	WASH HI	LAVAGE HAUTE	COLADA ALTA
WARM/COLD	CHAUDE/FROIDE	CALIENTESE/DE AGUA FRIA	SPIN HI	ESSORAGE HAUTE	EXPRIMIDO ALTA
WASH	LAVAGE	LAVADO	CASUAL	OCCASIONEL	OCASIONAL
RINSE	RINCAGE	ENJUAGUE	QUICK	VITE	APRISA
DRAIN	VIDENT	DRENAN	NORMAL	NORMALE	NORMAL
DRY/AGITATE	SECHER/AGITATION	SECO/AGITAR	TERMINAL IDENTIFIER	MARQUE TERMINALE	IDENTIFICADOR TERMINAL
PRE WASH	PRE LAVADO	PRE LAVADO	STEP	ETAPE	PASO
SOAK	TREMPAGE	REMOJJO	SECONDS	SECONDES	SEGUNDOS
DELICATE	DELICAT	DELICADO	MACHINE FUNCTION	FUNTION DE MACHINE	FUNCION DE LA MAQUINA
PERMANENT PRESS	SYNTHETIQUES	PERMANENTE PRENSA	EXTRA RINSE	RINCAGE SUPPLEMENTAIRE	ENJUAGUE ADICIONAL
REGULAR	REGULIER	REGULAR			
HEAVY	ROBUSTE	INTENSO			

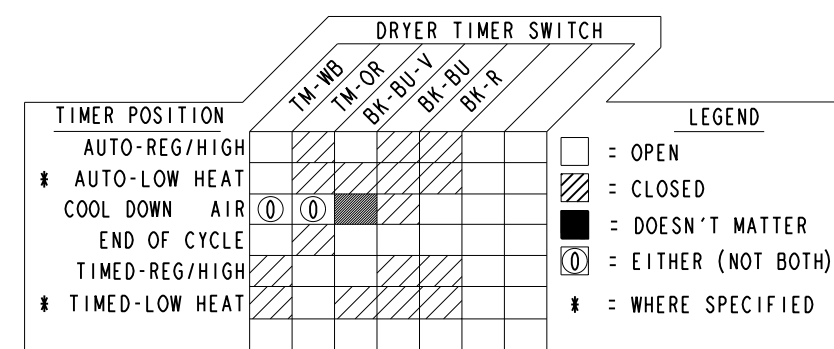
MANUFACTURADO BAJO UNA O MAS DE LAS SIGUIENTES PATENTES MEXICANAS:
 159840, 159983, 161744, 163722, 164305, 164407, 165938, 165992, 170221, 174138, 174478, 174483, 177764, 177766, 181185, 182183, 182396, 182632, 187728, 189682, 189766, 192502, 192503, 198393, 199844, 205519, 211042

FABRIQUE SOUS UN OU PLUSIEURS DES BREVETS CANADIENS SUIVANTS:
 1228410, 1233039, 1233658, 1282557, 1287338, 1288966, 1298988, 1301469, 1306367, 1313770, 2018975, 2022266, 2043393, 2056969, 2086151, D76618

MANUFACTURED UNDER ONE OR MORE OF THE FOLLOWING US PATENTS:
 4545947, 4555919, 4566295, 4572596, 4618193, 4624117, 4643350, 4646545, 4656844, 4656847, 4692987, 4693095, 4697293, 4700554, 4709951, 4715401, 4719769, 4754622, 4759202, 4774822, 4779431, 4782544, 4784666, 4785643, 4793820, 4807452, 4809524, 4835991, 4854559, 4856303, 4870988, 4888965, 4890465, 4891959, 4910979, 4945735, 4947516, 4969341, 4972134, 4977394, 4986093, 4987627, 5000016, 5031427, 5033277, 5074003, 5075613, 5113542, 5130624, 5150588, 5154071, 5166568, 5167722, 5172573, 5177659, 5191667, 5191668, 5191669, 5193361, 5199127, 5199281, 5200684, 5205141, 5219370, 5233718, 5249441, 5255844, 5257901, 5259217, 5269160, 5271251, 5297403, 5305485, 5312138, 5314044,

5345637, 5345792, 5345793, 5359744, 5373715, 5460018, 5493745, 5504955, 5507053, 5515565, 5582039, 5582199, 5651278, 5671494, 5765404, 5784902, 5791167, 5836180, 5852942, 5875655, 5878602, 5883490, 5946946, 6065171, 6070282, 6105403, 6115863, 6125490, 6185774, 6212722, 6227013, 6227014, 6269666, 6347645, 6363563, 6393872, 6430971, 6505370, 6314263, 6375390, 6381140, 6423740, 6426686, 6456572, 6459844, 6463631, 6465308

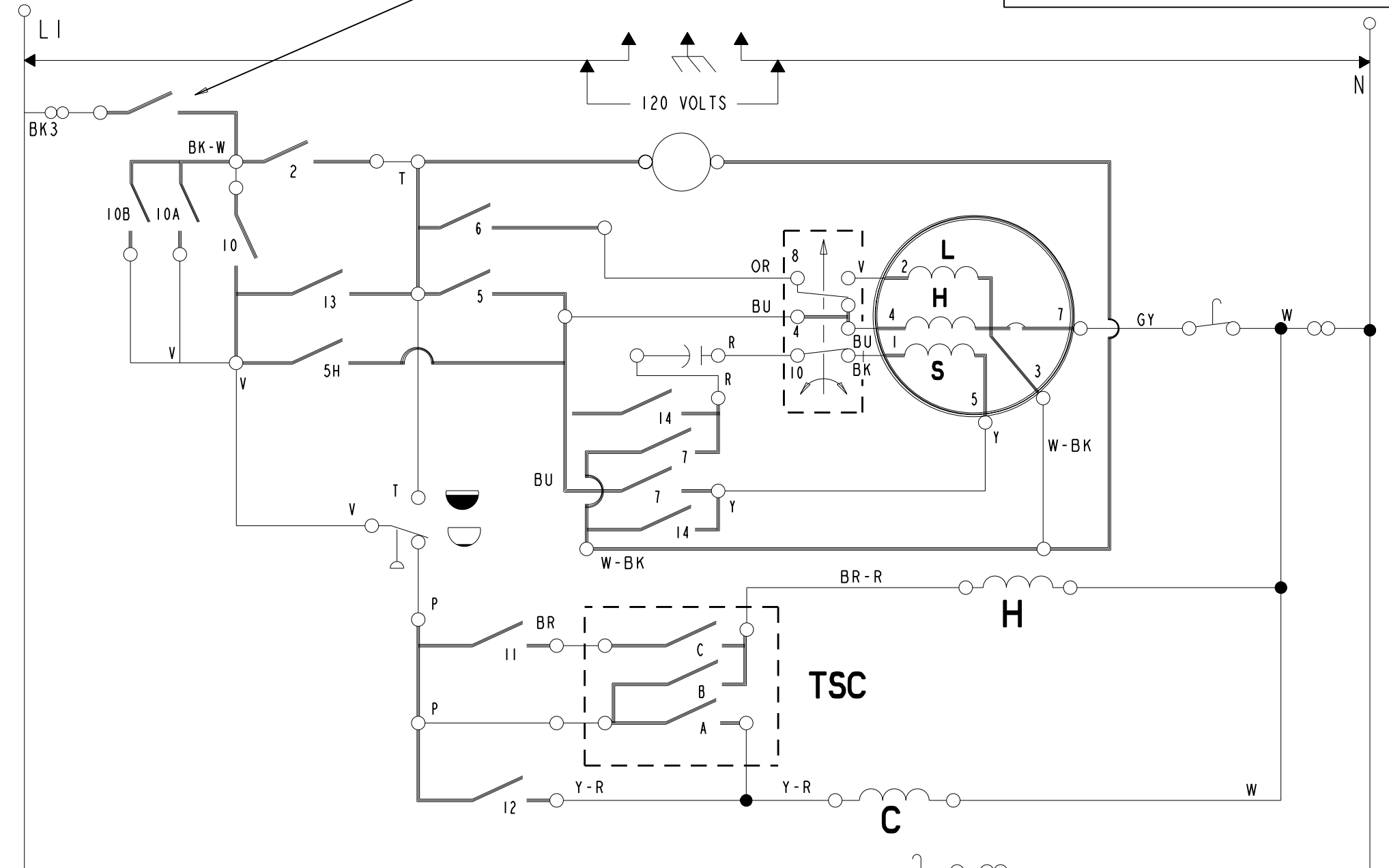
TIMER KNOB SWITCH PULL ON PUSH OFF
 TRACTION DE COMMUTATEUR DE BOUTON DE
 TEMPORISATEUR SUR LA POUSSEE AU LION
 TIRON DEL INTERRUPTOR DE LA PERILLA DEL
 CONTADOR DE TIEMPO EN



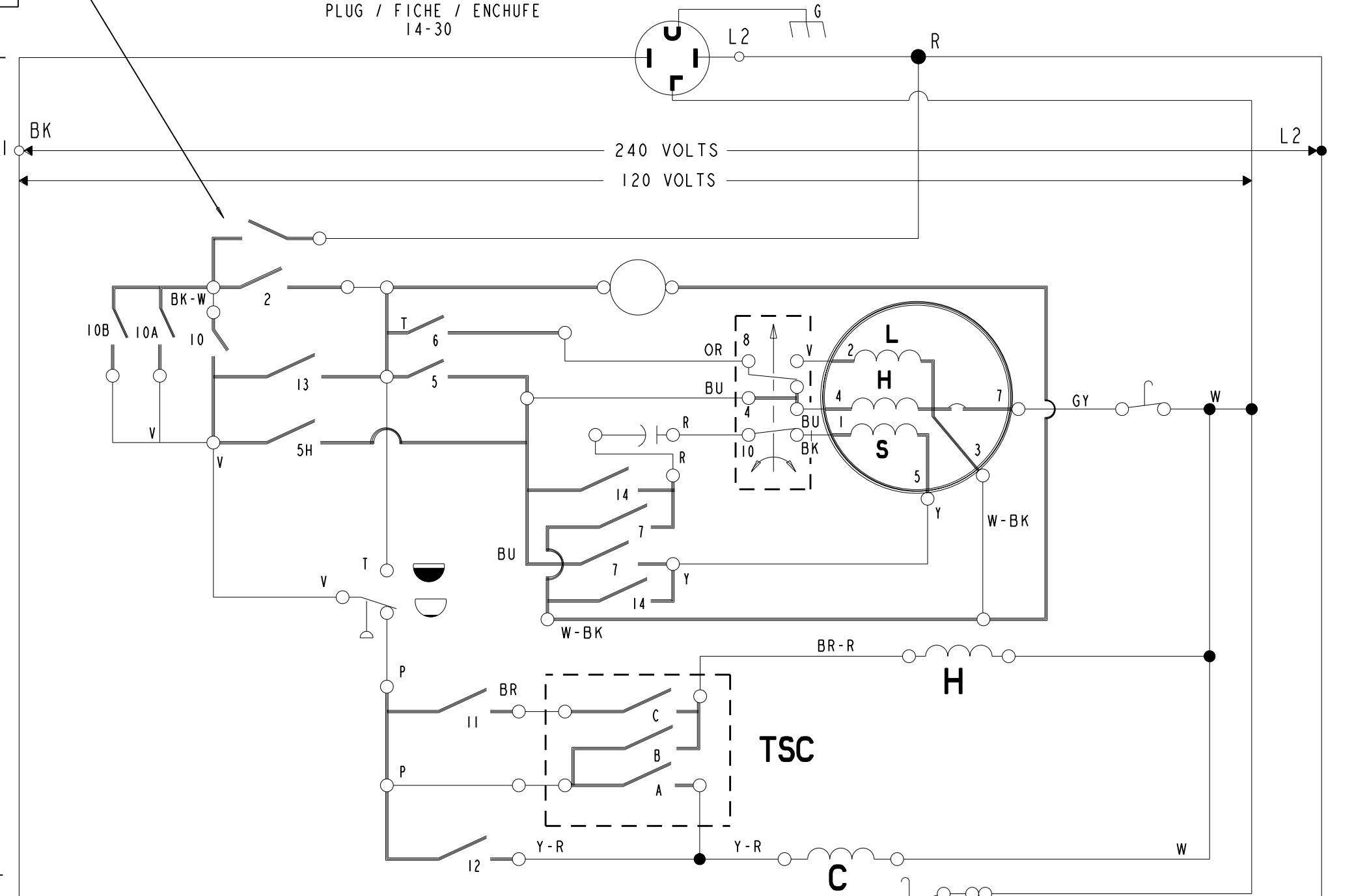
TSC				
SWITCH COMMUTANT CAMBIAN	HC	WC	CC	# WW
A		X	X	X
B				X
C	X	X		X

NOT USED ALL MODELS
 # NON UTILISE TOUS LES MODELES
 # NO UTILIZADO TODOS LOS MODELOS

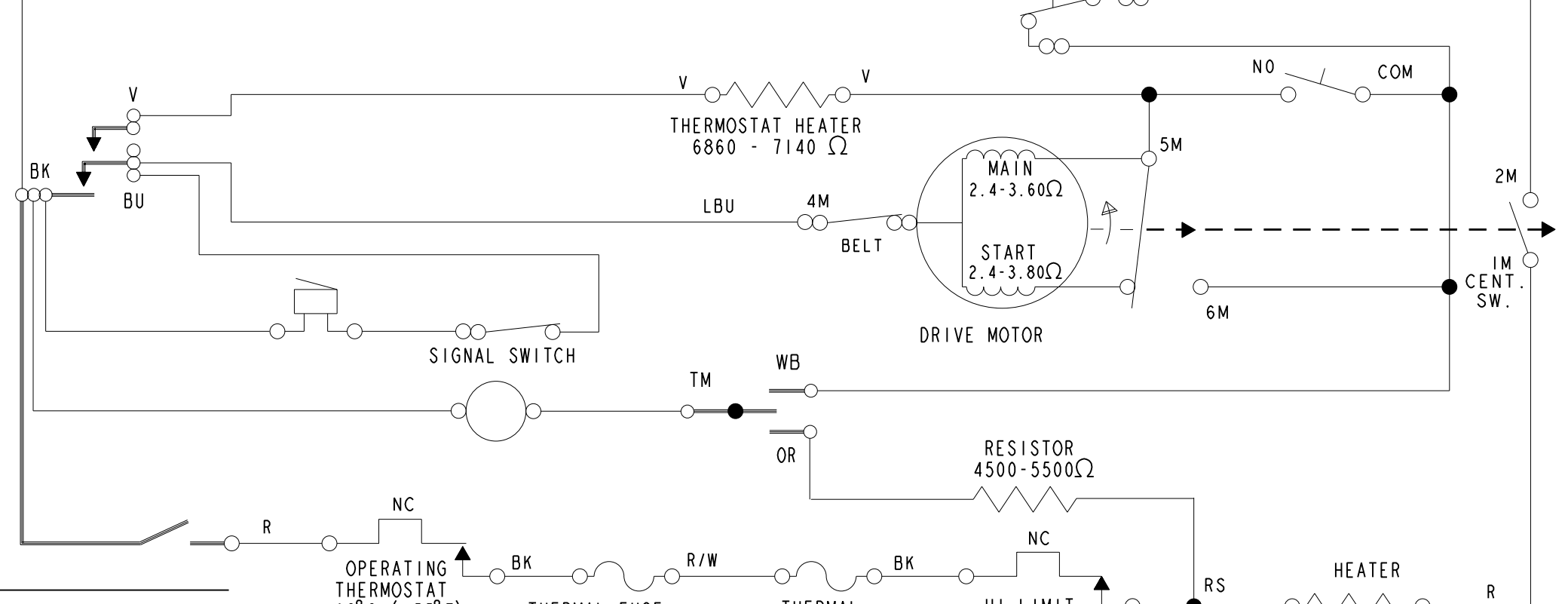
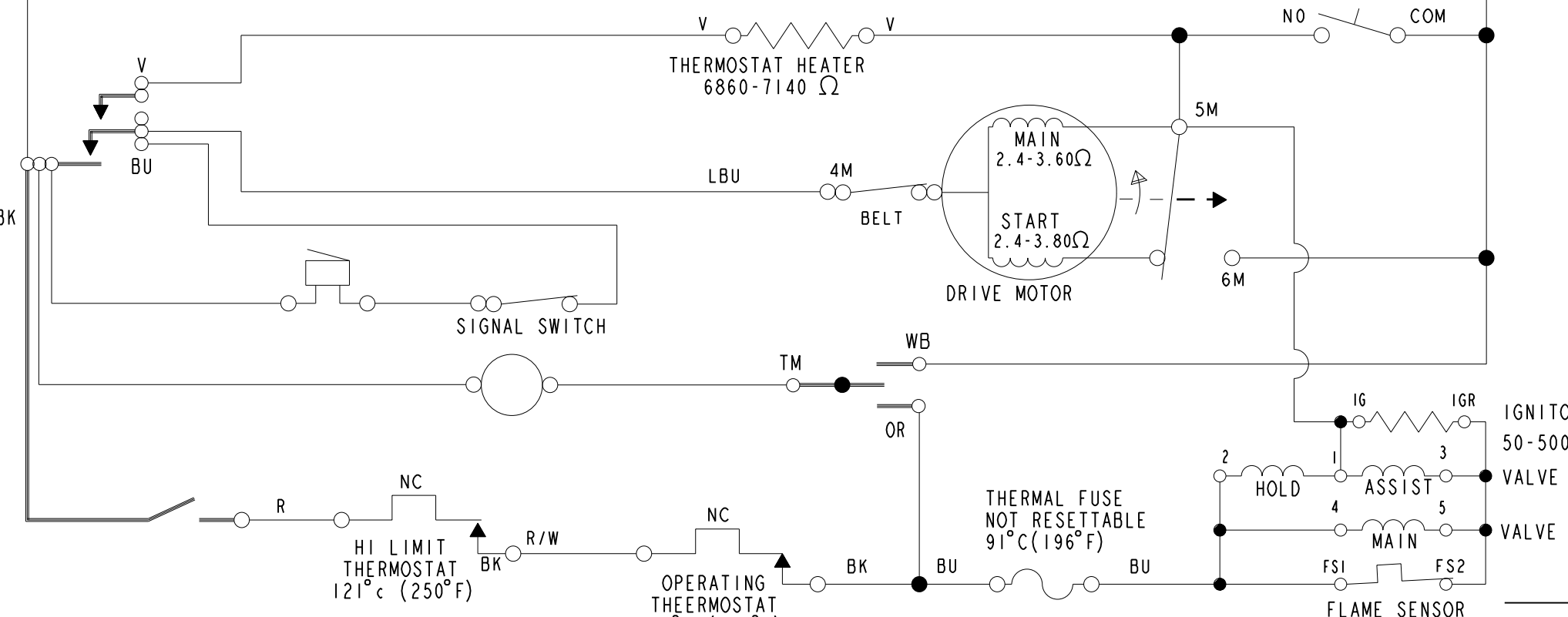
PART No. PIECE N° PIEZA N°	REV. REV. REV.
8578219	REL



WASHER WIRING DIAGRAM /
 DIAGRAMME DE CABLAGE DE
 RONDELLE /
 DIGRAMA ELECTRICO DE LA
 ARANDELA



DRYER WIRING DIAGRAM /
 DIAGRAMME DE CABLAGE DE
 DESSICATELLR /
 DIGRAMA ELECTRICO DEL
 SECADOR



LEGEND / LEGENDE / LEYENDA

- TIMER SWITCH / INT. DU PROGRAMMATEUR / INTERRUPTOR DEL TEMPORIZADOR
- INT. COMP CONNECTION / CONNEXION INTERNE DE COMPOSANT / CONEXION INTERNO DEL COMPONENTE
- HARNESS WIRING / FAISCEAU DE FILS / CABLEADO DEL HARNESS
- HARNESS CONNECTION / CONNEXION DE FILS / CONEXION DEL HARNESS
- TERMINAL CONNECTION / CONEXION DE LA BORNE / TERMINAL CONEXION
- WASH RINSE / RINCAGE DE LAVAGE / ACLARACION DE LA COLADA
- HOT VALVE / SOUPE D'EAU CHAUDE / CALIENTE VALVULA
- COLD VALVE / SOUPE D'EAU FROIDE / FRIA VALVULA
- DRIVE MOTOR / MOTEUR / IMPULSOR MOTOR
- L LOW / LENT / BAJO
- M MEDIUM / SUPPORT / MEDIA
- H HIGH / HAUT / ALTO
- S START / DEMARRENT / EMPIEZAN
- VOLTS / VOLTS / VOLTIOS
- WATER LEVEL SWITCH / INTERRUPTEUR NIVEAU D'EAU / INTERRUPTOR DEL NIVEL DEL AGUA
- FULL / PLEIN / POR COMPLETO
- EMPTY / VIDE / VACIO
- CAPACITOR / CONDENSATEUR / CONDENSADOR
- HEATER / RECHAUFFEUR / CALLENTADOR
- MAIN / PRINCIPAL / PRINCIPAL

- TSC** TEMPERATURE SWITCH CHART
 DIAGRAMME DE COMMUTATEUR
 DE LA TEMPERATURE)
 CARTA DE INTERRUPTOR DE LA
 TEMPERATURA)
- WATER LEVEL SWITCH
 INTERRUPTEUR NIVEAU D'EAU
 INTERRUPTOR DEL NIVEL DEL AGUA
- FULL / PLEIN / POR COMPLETO
- EMPTY / VIDE / VACIO
- CAPACITOR / CONDENSATEUR / CONDENSADOR
- HEATER / RECHAUFFEUR / CALLENTADOR
- MAIN / PRINCIPAL / PRINCIPAL

- LID SWITCH / INTERRUPTEUR DU COUVERCLE / INTERRUPTOR DE LA TAPA
- TIMER MOTOR / MOTEUR DE LA MINUTERIE / MOTOR DEL TEMPORIZADOR
- CENTRIFUGAL SWITCH / CONTACTEUR CENTRIFUGE / CENTRIFUGO INTERRUPTOR
- CABINET GROUND / TERRE DU CHASSI / CABIN MOLIDA
- THERMAL CUTOFF / COUPE THERMIQUE / ATAJO THERMAL
- THERMOSTAT HEATER / RECHAUFFEUR DE THERMOATAT / CALENTADOR DEL THERMOSTATO

- BUZZER / VIBREUR / ZUMBADOR
- DOOR SWITCH / COMMUTATEUR DE PORTE / INTERRUPTOR DE LA PUERTA
- PUSH TO START / PUSSEZ AU DEBUT / EMPUJE AL COMIENZO
- HI LIMIT THERMOSTAT / HAUTE THERMOSTAT DE LIMITE / ALTA THERMOSTATO DEL LIMITE
- SIGNAL SWITCH / COMMUTATEUR DE SIGNAL / INTERRUPTOR DE LA SERIAL
- THERMOSTAT HEATER / RECHAUFFEUR DE THERMOATAT / CALENTADOR DEL THERMOSTATO

- THERMAL FUSE NOT RESETTABLE / FUSIBLE THERMIQUE NON REGLABLE / FUSIBLE THERMAL NO RESTAURABLE
- OPERATING THERMOSTAT / THERMOSTAT FONCTIONNANT / THERMOSTATO DE FUNCIONAMIENTO
- GAS BURNER / BRULEUR A GAZ / MECHERO DE GAS
- HOLD / PRISE / ASIMIENTO
- VALVE / SOUPE / VALVULA
- FLAME SENSOR / SENSEUR DE FLAMME / SENSOR DE LA LLAMA
- IGNITOR / ALLUMEUR / ENCEDEDOR
- BELT / COURROIE / CORREA