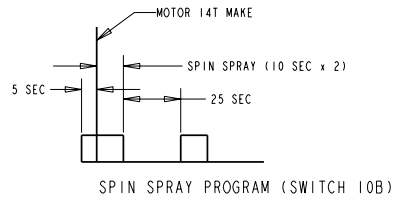


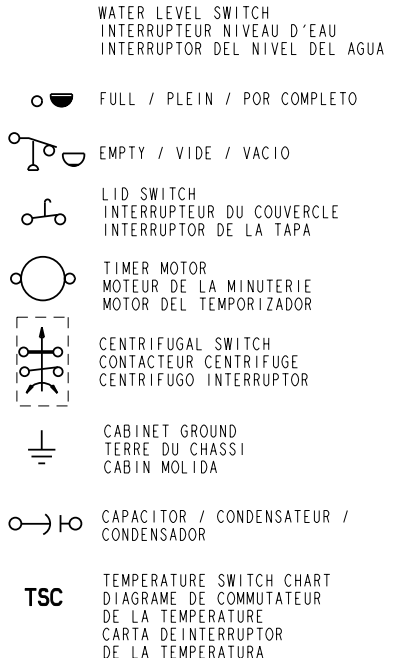
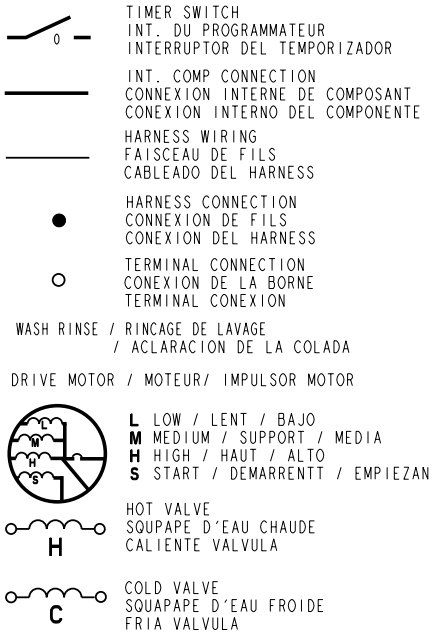
KEY
 [Black Bar] CONTACT OPEN ON CHART
 [White Bar] CONTACT CLOSED ON CHART
 [Circle] DIAL-IN LOCATION

FILL - AGITATE	DRY AGITATE		FILL AGITATE	SPRAY		FILL AGITATE	SPRAY	FILL - AGITATE	SPRAY	
FILL & WASH		DRAIN	SPIN	RINSE	DRAIN			RINSE	DRAIN	
HEAVY DUTY					OFF	PERMANENT PRESS				



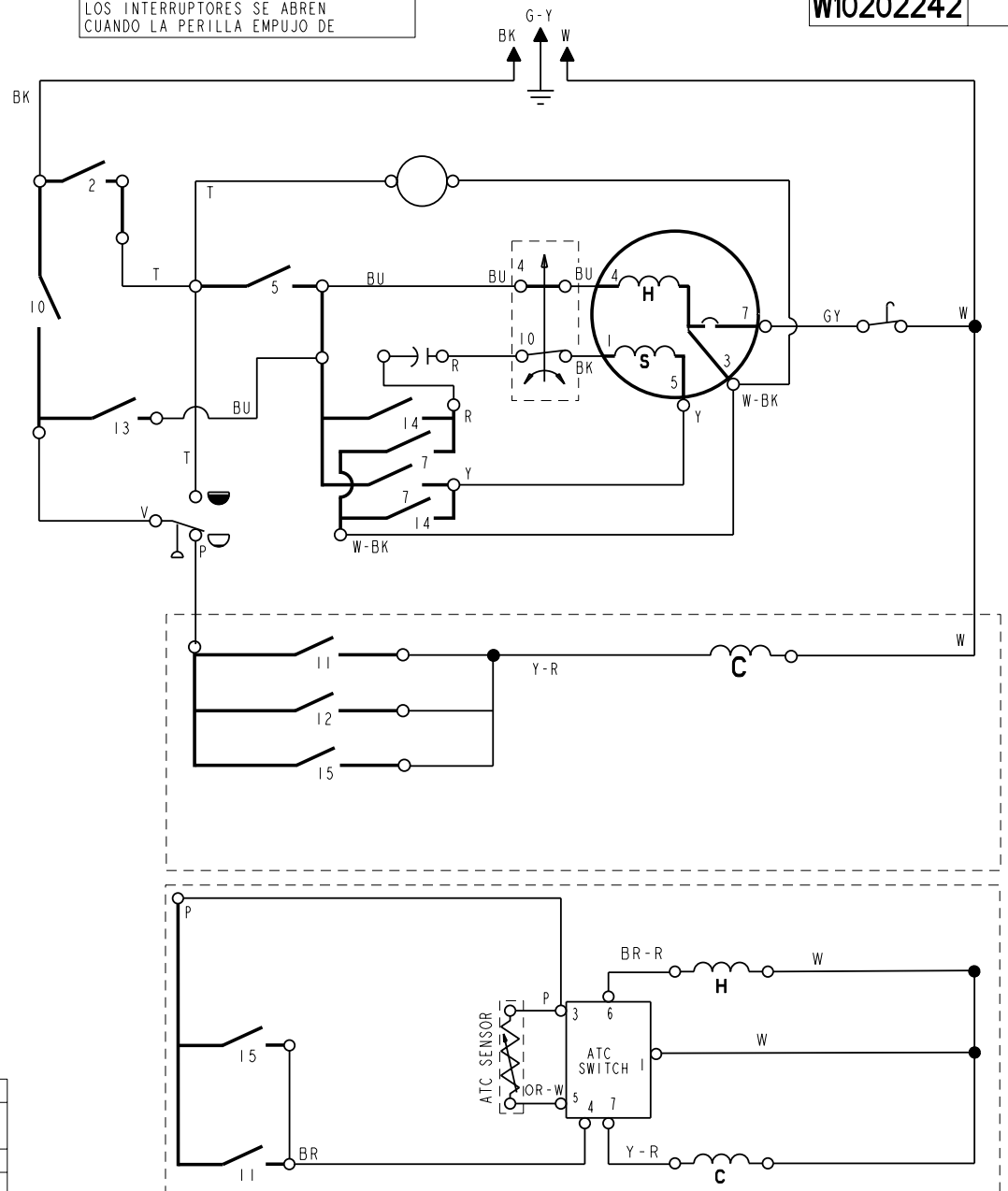
LEGEND	LEGENDE	LEYENDA	LEGEND	LEGENDE	LEYENDA
1/2 TUB DRAIN	1/2 COVETTE VID	DREN DE LA TINA DEL 1/2	SWITCH FUNCTION	COMMUTEZ LA FONCTION	CAMBIE LA FUNCTION
SPRAY	GICLAGE	AEROSOL	CAM	CAME	LEVA
BYPASS	DERIVATION	PUENTE	OFF	ARRET	DE
FILL	REEMPLISSAGE	LLENAN	COOL DOWN	REFROIDISSEZ	REFRESQ'UESE ABAJO
AGITATE	AGITATION	AGITAR	SPIN LOW	ESSORAGE BASSE	EXPRIMIDO BAJA
SPIN	DEMARRAGE	INICIAR	RINSE LOW	RINCAGE BASSE	ACLARACION BAJA
HI MOTOR	HAUTE RAPIDE	ALTA MOTOR	WASH LOW	LAVAGE BASSE	LAVADO BAJA
LOW MOTOR	BASSE MOTEUR	ALTA MOTOR	WASH HI	LAVAGE HAUTE	COLADA ALTA
WARM/COLD	CHAUDE/FROIDE	CALIENTESE/DE AGUA FRIA	SPIN HI	ESSORAGE HAUTE	EXPRIMIDO ALTA
WASH	LAVAGE	LAVADO	CASUAL	OCCASIONEL	OCCASIONAL
RINSE	RINCAGE	ENJUAGUE	QUICK	VITE	APRISA
DRAIN	VIDENT	DRENAN	NORMAL	NORMALE	NORMAL
DRY/AGITATE	SECHER/AGITATION	SECO/AGITAR	TERMINAL IDENTIFIER	MARQUE TERMINALE	IDENTIFICADOR TERMINAL
PRE WASH	PRE LAVADO	PRE LAVADO	STEP	ETAPE	PASO
SOAK	TREMPAGE	REMOJJO	SECONDS	SECONDES	SEGUNDOS
DELICATE	DELICAT	DELICADO	MACHINE FUNCTION	FUNTION DE MACHINE	FUNCION DE LA MAQUINA
PERMANENT PRESS	SYNTHETIQUES	PERMANENTE PRENSA	EXTRA RINSE	RINCAGE SUPPLEMENTAIRE	ENJUAGUE ADICIONAL
REGULAR	REGULIER	REGULAR			
HEAVY	ROBUSTE	INTENSO			

LEGEND / LEGENDE / LEYENDA



TIMER KNOB PUSH OFF
 ALL TIMER SWITCHES OPEN
 TIRE POUR MARCHE POUSSÉ POUR ARRÊTE
 BOUTON-FOUSSOIR DU PROGRAMMATEUR
 LOS INTERRUPTORES SE ABREN
 CUANDO LA PERILLA EMPUJO DE

PART NO. NUMERO DE PIECE NUMERO DE PIEZA	REV REVISION REVISION
WI0202242	B



MANUFACTURED UNDER ONE OR MORE OF THE FOLLOWING US PATENTS:

- 4545947, 4555919, 4566295, 4572596, 4618193, 4624117, 4643350,
- 4646545, 4656844, 4656847, 4692987, 4693095, 4697293, 4700554,
- 4709951, 4715401, 4719769, 4754622, 4759202, 4774822, 4779431,
- 4782544, 4784666, 4785643, 4793820, 4807452, 4809524, 4835991,
- 4854559, 4856303, 4870988, 4889965, 4890465, 4891959, 4910979,
- 4945135, 4947516, 4969341, 4972134, 4977394, 4986093, 4981621,
- 5000016, 5031427, 5033277, 5074003, 5075613, 5113542, 5130624,
- 5150588, 5154071, 5166568, 5167722, 5172573, 5177659, 5191667,
- 5191668, 5191669, 5193361, 5199127, 5199281, 5200684, 5205141,
- 5219370, 5233718, 5249441, 5255844, 5257901, 5259217, 5269160,
- 5271251, 5297403, 5305485, 5312138, 5314044, 5345637, 5345792,
- 5345193, 5359744, 5373715, 5460018, 5493745, 5504955, 5501053,
- 5515565, 5582039, 5582199, 5651278, 5671494, 5765404, 5784902,
- 5791167, 5836180, 5852942, 5875655, 5878602, 5883490, 5946946,
- 6065171, 6070282, 6105403, 6115863, 6125490, 6185774, 6212722,
- 6227013, 6227014, 6269666, 6347645, 6363563, 6393872, 6430971,
- 6505370, 6597144, 6604298, 6685241, 6735447, 6784673, 6819255,
- 6840068, 6846700, 6860032, 6863197, 6900166, 6964360, 6966204,
- 6973740, 6973515, 7020985, 7080464, 7097667, 70314263, 70375390,
- 70381140, 70423740, 70426886, 70456572, 70459844, 70463631, 70465308,
- 70474566, 70495453, 70518250, 70502577, 70514756, 70521196, 70523595,
- 70524001, 70527853

FABRIQUE SOUS UN OU PLUSIEURS DES BREVETS CANADIENS SUIVANTS:

- 1228410, 1233039, 1233658, 1282557, 1287338, 1288966, 1298988,
- 1301469, 1306367, 1313770, 2018975, 2022266, 2043393, 2056969,
- 2086151, 2076618

MANUFACTURADO BAJO UNA O MAS DE LAS SIGUIENTES PATENTES MEXICANAS:

- 159840, 159983, 161744, 163722, 164305, 164407, 165928,
- 165992, 170221, 174138, 174478, 174483, 177164, 177166,
- 181185, 182183, 182396, 182632, 187728, 189682, 189766,
- 192502, 192503, 198393, 199844, 205519, 211042

TSC WI0112532			
POS	WASH / RINSE	WASH TEMP	RINSE TEMP
1	C/C	COLD	COLD
2	C/C	70°	COLD
3	H/C	105°	COLD

WARNING - DISCONNECT FROM ELECTRICAL SUPPLY BEFORE SERVICING UNIT.