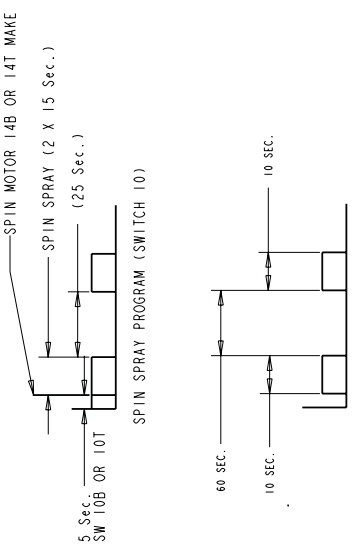


KEY
 CONTACT OPEN ON CHART
 CONTACT CLOSED ON CHART
 DIAL-IN LOCATION

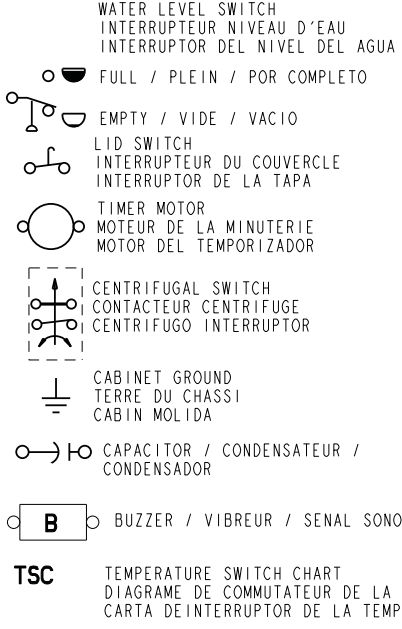
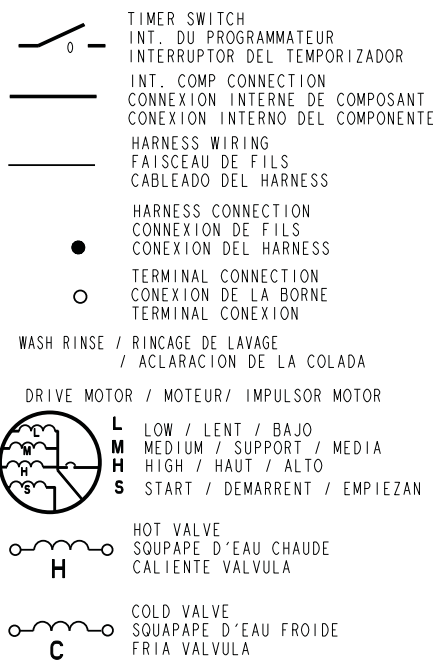


ENGLISH	FRENCH	SPANISH
RINSE	RINCAGE	ACLARACION
SOAK	IMBIBERT	REMOJAN
SPIN	ESSORAGE	VUELTA
SPRAY	CICLAGE	AEROSOL
WASH	LAVAGE	COLADA
TIMED FILL	SYNCHRONISES REMPLISSAGE	SINCRONIZADO TERRAPLEN
1/2 TUB DRAIN	1/2 COVETTE VID	DREN DE LA TINA DEL 1/2
FAB. SOFTNER	RAMOLLISSANT DE TISSU	SUAVIZADOR DE LA TELA
DETERGENT	DETERGENT	DETERGENTE
ULTRA CLEAN	ULTRA PROPRE	ULTRA LIMPIO

ENGLISH	FRENCH	SPANISH
AGITATE	AGITER	AGITAN
BLEACH	BLANCHIMENT	BLANQUEO
BZZER	VIBEUR	SEÑAL SONORA
BYPASS	DERIVATION	PUENTE
DRAIN	VIDENT	DRENAN
EXTRA RINSE	RINCAGE DE PLUS	ADICIONAL ACLARACION
FILL	REMPLISSAGE	LLENAN
HIGH	HAUT	ALTO
INT AGITATE	AGITER INTERMITTENT	INTERMITENTE AGITE
LO	LENT	BAJO
MED	MED	MEDIA
MOTOR	MOTEUR	MOTOR
NORMAL	NORMALE	NORMAL
PERMANENT PRESS	SYNTHETIQUES	PERMANENT PRENSA
PREWASH	PRE LAVAGE	PRE COLADA

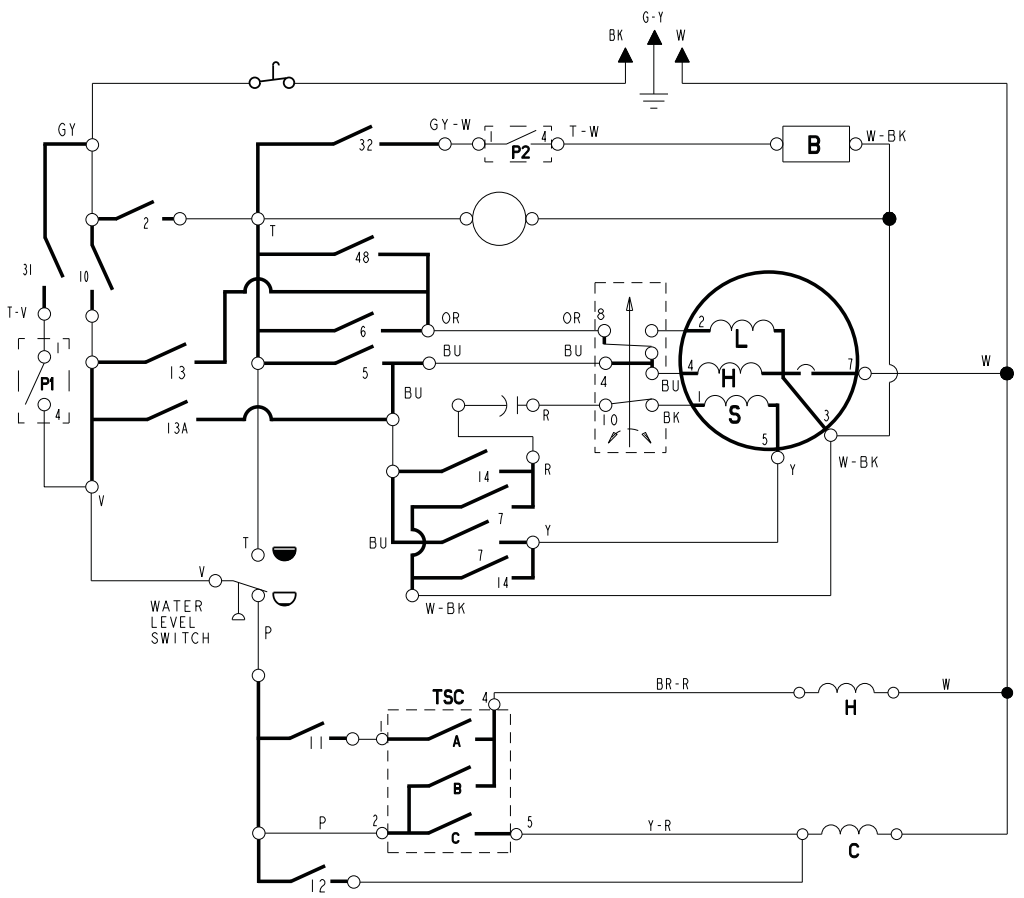
INTERMITTANT AGITATE PROGRAM (SWITCH 12B & 14B)

LEGEND / LEGENDE / LEYENDA



TIMER KNOB PUSH OFF
ALL TIMER SWITCHES OPEN
TIRE POUR MARCHE POUSSE POUR ARRETE
BOUTON-FOUSOIR DU PROGRAMMEUR
LOS INTERRUPTORES SE ABREN
CUANDO LA PERILLA EMPUJO DE

PART NO. NUMERO DE PIECE NUMERO DE PIEZA	REV REVISION REVISION
W10224331	A



MANUFACTURED UNDER ONE OR MORE OF THE FOLLOWING US PATENTS:

4545947, 4555919, 4566295, 4572596, 4618193, 4624117, 4643350,
4646545, 4656844, 4656847, 4692987, 4693095, 4697293, 4700554,
4709951, 4715401, 4719769, 4754622, 4759202, 4774822, 4779431,
4782544, 4784666, 4785643, 4793820, 4807452, 4809524, 4835991,
4854539, 4856303, 4870988, 4888965, 4890465, 4891959, 4910979,
4945735, 4947516, 4969341, 4972134, 4977394, 4986093, 4987627,
5000016, 5031427, 5033277, 5074003, 5075613, 5113542, 5130624,
5150588, 5154071, 5166568, 5167722, 5172573, 5177659, 5191667,
5191668, 5191669, 5193361, 5199127, 5199281, 5200684, 5205141,
5219370, 5233718, 5249441, 5255844, 5257901, 5259217, 5269160,
5271251, 5297403, 5305485, 5312138, 5314044, 5345637, 5345792,
5345793, 5359744, 5373715, 5460018, 5493745, 5504955, 5507053,
5515565, 5582039, 5582199, 5651278, 5671494, 5755404, 5784902,
5791167, 5836180, 5852942, 5875655, 5878602, 5883490, 5946946,
6065171, 6070282, 6105403, 6115863, 6125490, 6185774, 6212722,
6227013, 6227014, 6269666, 6347645, 6363563, 6393072, 6430971,
6505370, 6597144, 6604298, 6685241, 6732447, 6784673, 6819255,
6840068, 6846790, 6860032, 6863197, 6900166, 6964360, 6966204,
6973740, 6973515, 7020985, 7080464, 7097667, 0314263, 0375390,
0381140, 0423740, 0426686, 0456572, 0459844, 0463631, 0465308,
0474566, 0495453, 0518250, 0502577, 0514756, 0521196, 0523595,
0524001, 0527853

MANUFACTURADO BAJO UNA O MAS DE LAS SIGUIENTES PATENTES MEXICANAS:

159840, 159983, 161744, 163722, 164305, 164407, 165938,
165992, 170221, 174138, 174448, 174483, 177764, 177766,
181185, 182183, 182396, 182632, 187728, 189682, 189766,
192502, 192503, 198393, 199844, 205519, 211042

MANUFACTURED UNDER ONE OR MORE OF THE FOLLOWING CANADIAN PATENTS:

FABRIQUE SOUS UN OU PLUSIEURS DES BREVETS CANADIENS SUIVANTS:

1228410, 1233039, 1233658, 1282557, 1287338, 1288966, 1298988,
1301469, 1306367, 1313770, 2018975, 2022266, 2043393, 2056969,
2086151, 076618

TSC 3949184

SWITCH COMMUTATEUR CAMBIAN	HC	WC	CC	WW
A	X	X		X
B				X
C		X	X	X

TSC 3950347

SWITCH COMMUTATEUR CAMBIAN	WW	CC	WC	HC	HW
A			X	X	
B	X				X
C	X	X	X		

TSC W10141383

SWITCH COMMUTATEUR CAMBIAN	CC	WC	HC	HW	WW
A		X	X		
B				X	X
C	X	X			X

EXTRA RINSE
SUPPLEMENTAIRE RINCAGE
ADICIONAL ACLARACION

	PI
OFF/ARRET/DE	
ON/SUR/EN	X

END OF CYCLE SIGNAL
EXTREME DE SIGNAL
DE CYCLE
EXTREMO DE LA SENAL
SENAL DEL CICLO

	P2
OFF ARRET DE	
ON SUR DE	X