



# AD-630

## Parts Manual

### For Gas Models

---

**American Dryer Corporation**  
88 Currant Road  
Fall River, MA 02720-4781  
Telephone: (508) 678-9000 / Fax: (508) 678-9447  
E-mail: [techsupport@amdry.com](mailto:techsupport@amdry.com)

[www.amdry.com](http://www.amdry.com)

# Retain This Manual In A Safe Place For Future Reference

American Dryer Corporation products embody advanced concepts in engineering, design, and safety. If this product is properly maintained, it will provide many years of safe, efficient, and trouble free operation.

**ONLY qualified technicians should service this equipment.**

**OBSERVE ALL SAFETY PRECAUTIONS** displayed on the equipment or specified in the installation manual included with the dryer.

The following “**FOR YOUR SAFETY**” caution must be posted near the dryer in a prominent location.

## FOR YOUR SAFETY

Do not store or use gasoline or other flammable vapors and liquids in the vicinity of this or any other appliance.

## POUR VOTRE SÉCURITÉ

Ne pas entreposer ni utiliser d'essence ni d'autres vapeurs ou liquides inflammables à proximité de cet appareil ou de tout autre appareil.

We have tried to make this manual as complete as possible and hope you will find it useful. ADC reserves the right to make changes from time to time, without notice or obligation, in prices, specifications, colors, and material, and to change or discontinue models.

## Important

For your convenience, log the following information:

DATE OF PURCHASE \_\_\_\_\_ MODEL NO. **AD-630**  
RESELLER'S NAME \_\_\_\_\_  
Serial Number(s) \_\_\_\_\_  
\_\_\_\_\_  
\_\_\_\_\_

Replacement parts can be obtained from your reseller or the ADC factory. When ordering replacement parts from the factory, you can FAX your order to ADC at (508) 678-9447 or telephone your order directly to the ADC Parts Department at (508) 678-9000. Please specify the dryer model number and serial number in addition to the description and part number, so that your order is processed accurately and promptly.

The illustrations on the following pages may not depict your particular dryer exactly. The illustrations are a composite of the various dryer models. Be sure to check the descriptions of the parts thoroughly before ordering.

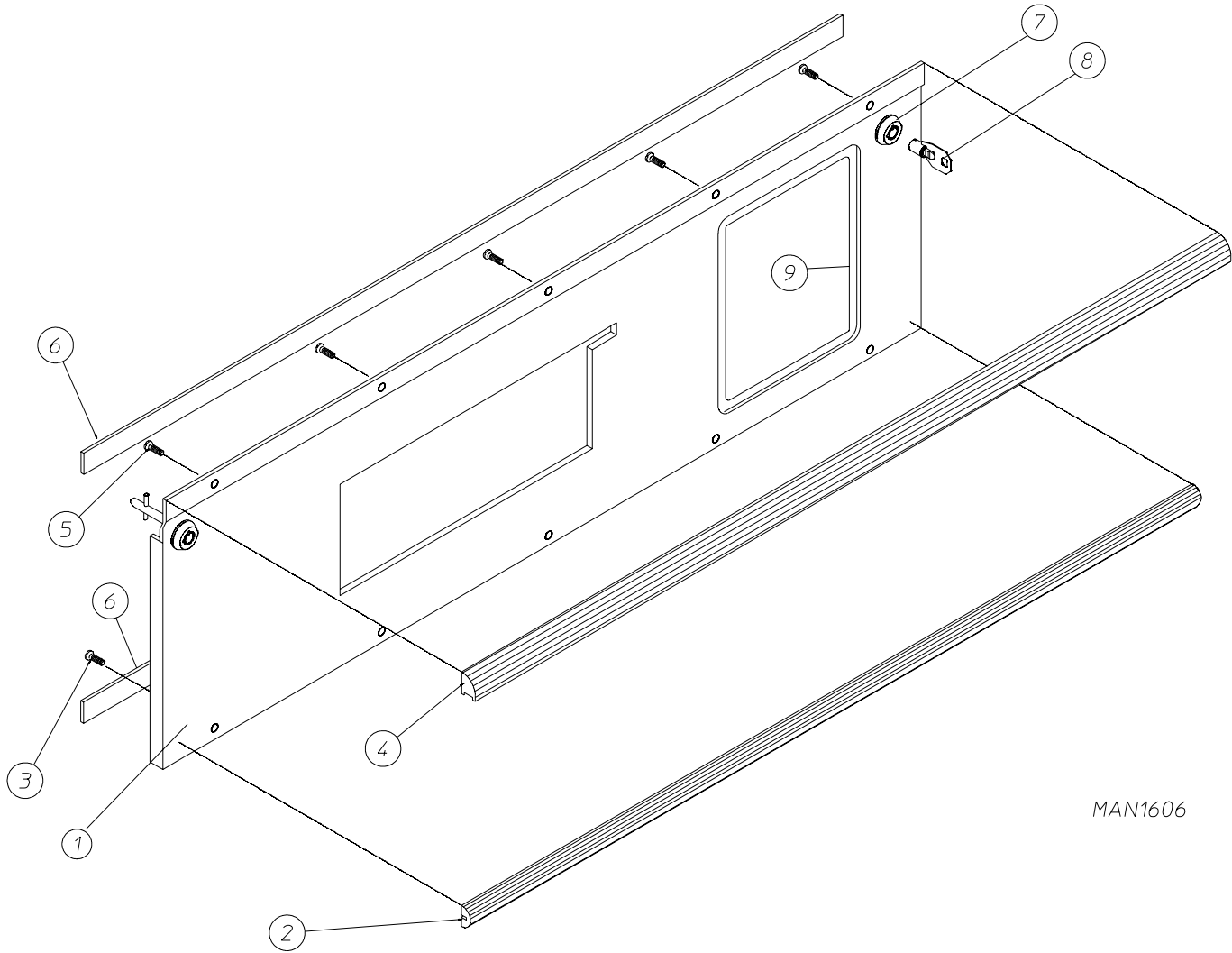
### **“IMPORTANT NOTE TO PURCHASER”**

Information must be obtained from your local gas supplier on the instructions to be followed if the user smells gas. These instructions must be posted in a prominent location near the dryer.

# Table of Contents

3-Leg Coin Control Door Assembly .....	4
3-Leg Non-Coin Door Assembly .....	5
Lint Door Assembly .....	6
Locking Lint Drawer (Basket) Assembly .....	7
Single Coin, (Dual Microprocessor Controller) Control Panel Assembly for Single Coin 25¢ Models Only .....	8
25¢ Coin Acceptor Component Listing for Single Coin 25¢ Models Only .....	9
Dual Coin, (Dual Microprocessor Controller) Control Panel Assembly for Export Models Only .....	10
Dual Coin Acceptor Component Listing for Export Models Only .....	12
Non-Coin, (Dual Microprocessor Controller) Control Panel Assembly .....	14
Coin Vault Assembly .....	15
Dual Microprocessor Controller Control Box Assembly .....	16
Upper Front Panel Assembly .....	18
Lower Front Panel Assembly .....	19
Main Door Assembly .....	20
Main Door Switch Assembly .....	21
Tumbler / Support Assembly .....	22
Tumbler Brush Assembly .....	23
Temperature Sensor Probe Assembly .....	24
Lint Drawer (Basket) Switch Assembly .....	25
Tumbler Bearing Assembly .....	26
Totally Enclosed, Non-Vent Motor / Idler Assemblies .....	28
Gas Train Valve Assembly .....	30
Burner Box / Piping Assemblies .....	32
Sail Switch Assembly .....	33
Back Guard Assembly .....	34
Optional Gas Piping and Exhaust Ducting Kits .....	35
12-Rib 95" (J) Poly Belt Arrangement .....	36
Bottom Exhaust Duct Assembly .....	37
Additional Parts Available .....	38

# 3-Leg Coin Control Door Assembly

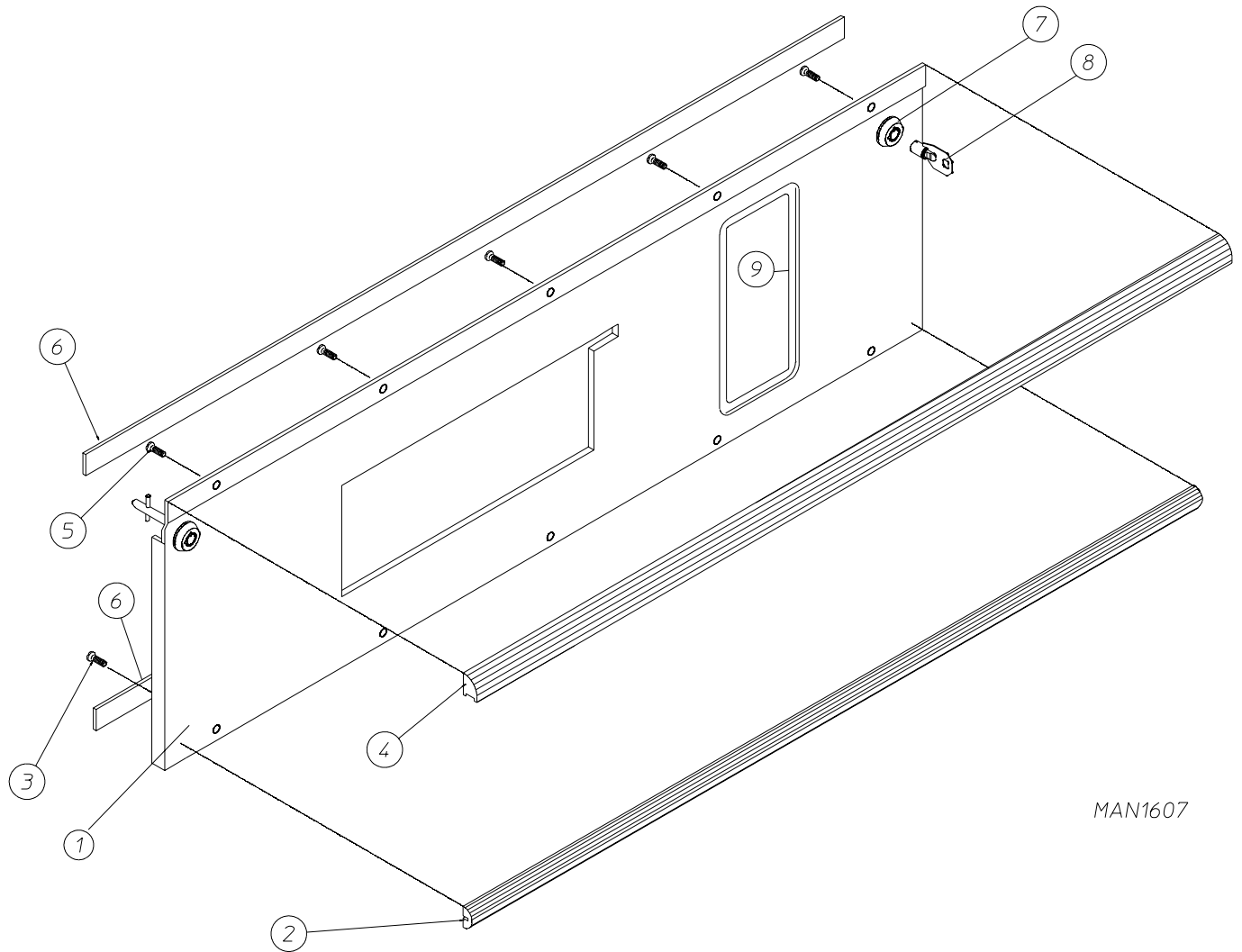


MAN1606

Illus. No.	Part No.	Qty.	Description
1	881124*	1	3-Leg Coin Control Door Assembly Complete Less Locks (includes illus. nos. 1 through 6 and 9)
	881126	1	3-Leg Stainless Steel Coin Control Door Complete Less Locks (includes illus. nos. 1 through 6 and 9)
2	180315	1	Lower Door Trim (29-11/16" length)
3	150310	5	#8 x 1/2" Phillips Pan Head "A" Screw
4	180316	1	Upper Door Trim (29-11/16" length)
5	150310	5	#8 x 1/2" Phillips Pan Head "A" Screw
6	117600	5	Noise Suppressor Tape (sold by the foot)
7	160040	2	ACE® Lock Assembly Only
8	160140	-	ACE® Lock Only (key number xx4451)
9	117602	2	1/4" Noise Suppressor Tape (sold by the foot)

\* Specify color when ordering.

# 3-Leg Non-Coin Door Assembly

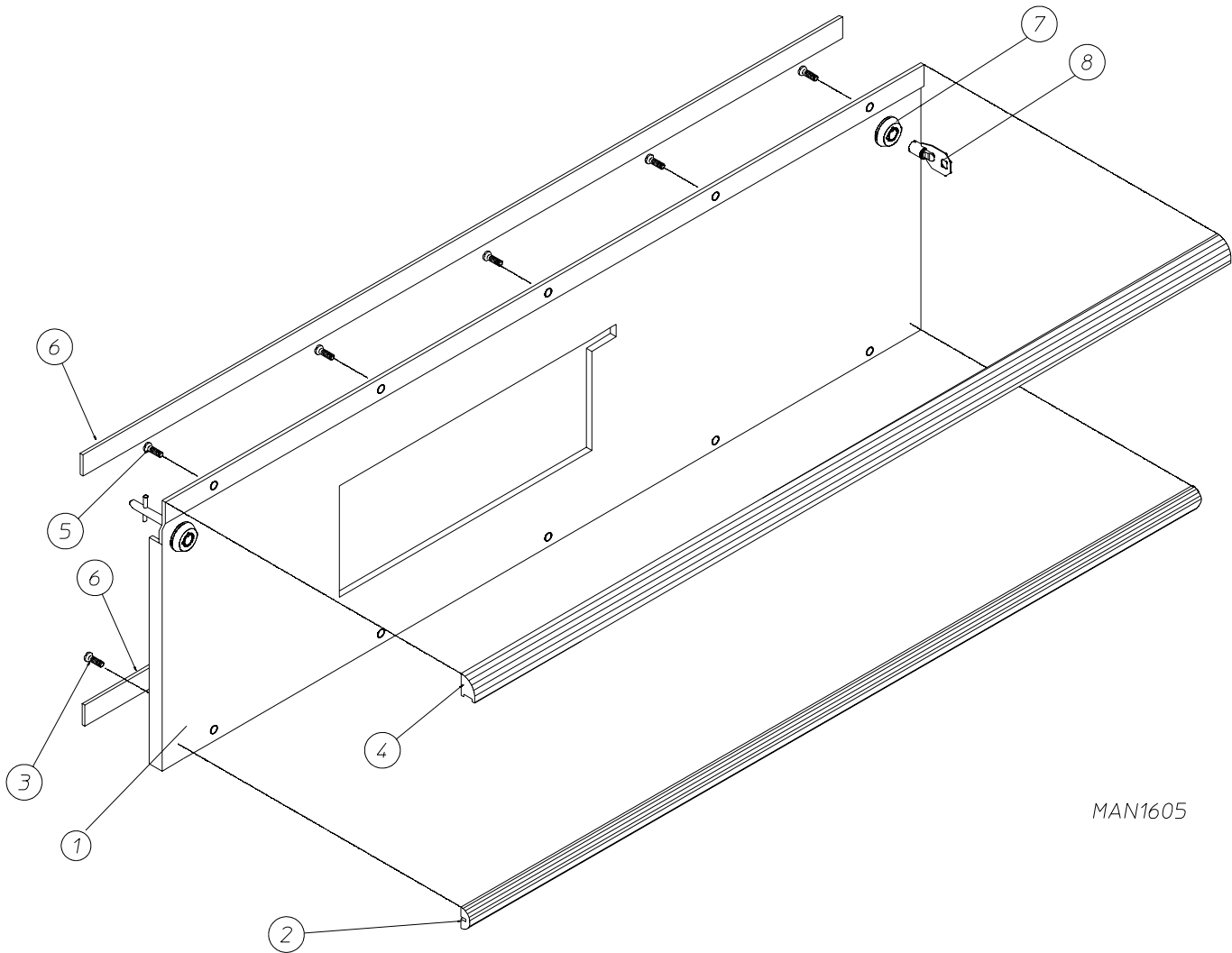


MAN1607

Illus. No.	Part No.	Qty.	Description
1	881123*	1	3-Leg Non-Coin Control Door Assembly Complete Less Locks (includes illus. nos. 1 through 6 and 9)
	881128	1	3-Leg Stainless Steel Non-Coin Control Door Complete Less Locks (includes illus. nos. 1 through 6 and 9)
2	180315	1	Lower Door Trim (29-11/16" length)
3	150310	5	#8 x 1/2" Phillips Pan Head "A" Screw
4	180316	1	Upper Door Trim (29-11/16" length)
5	150310	5	#8 x 1/2" Phillips Pan Head "A" Screw
6	117600	5	Noise Suppressor Tape (sold by the foot)
7	160040	2	ACE® Lock Assembly Only
8	160140	-	ACE® Lock Only (key number xx4451)
9	117602	2	1/4" Noise Suppressor Tape (sold by the foot)

\* Specify color when ordering.

# Lint Door Assembly



MAN1605

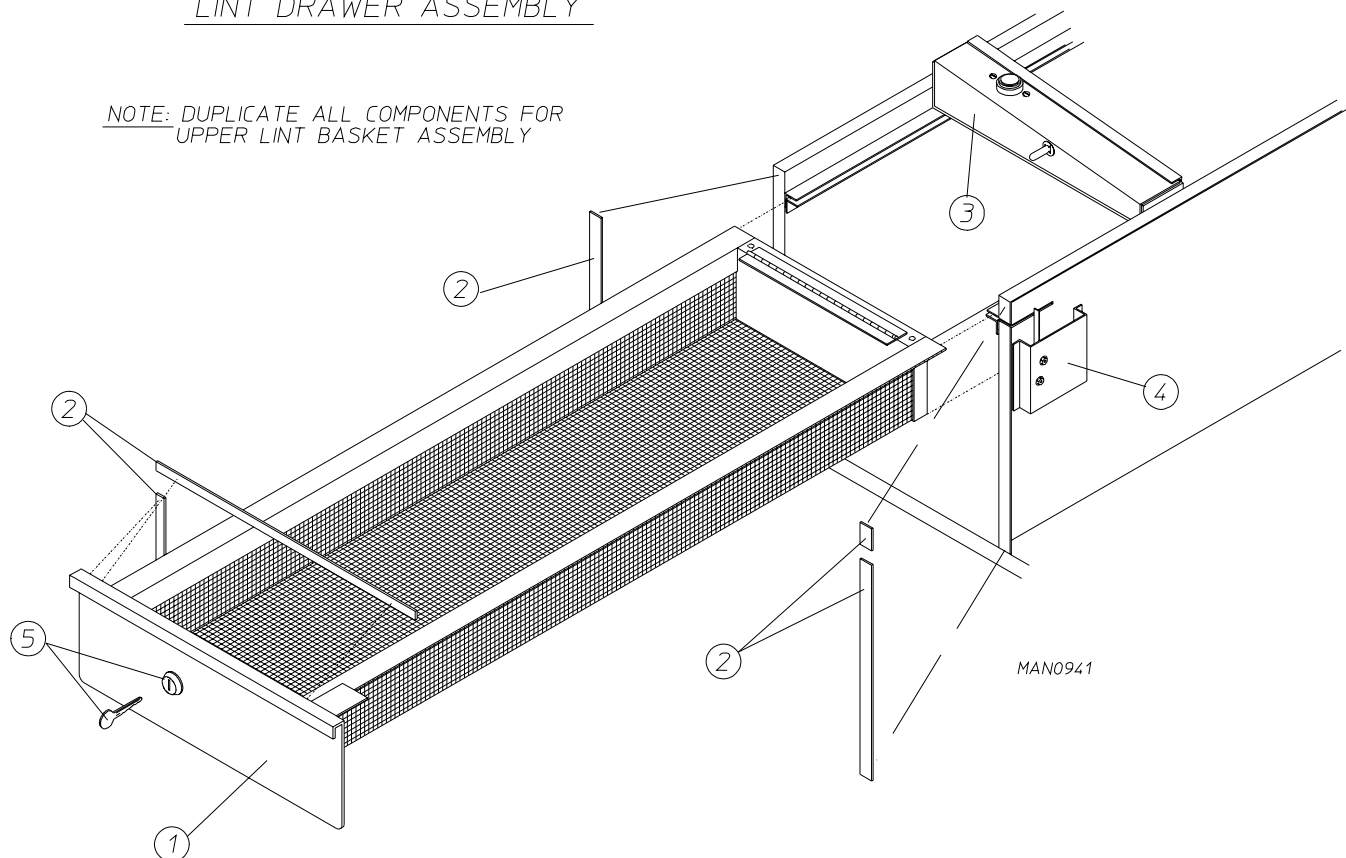
Illus. No.	Part No.	Qty.	Description
1	880246*	1	Lint Door Assembly Complete Less Locks (includes illus. nos. 1 through 6)
	880195	1	Stainless Steel Lint Door Complete Less Locks (includes illus. nos. 1 through 6)
2	180315	1	Lower Door Trim (29-11/16" length)
3	150310	5	#8 x 1/2" Phillips Pan Head "A" Screw
4	180316	1	Upper Door Trim (29-11/16" length)
5	150310	5	#8 x 1/2" Phillips Pan Head "A" Screw
6	117600	5	Noise Suppressor Tape (sold by the foot)
7	160040	2	ACE® Lock Assembly Only
8	160140	-	ACE® Lock Only (key number xx4451)

\* Specify color when ordering.

# Locking Lint Drawer (Basket) Assembly

## LINT DRAWER ASSEMBLY

NOTE: DUPLICATE ALL COMPONENTS FOR UPPER LINT BASKET ASSEMBLY

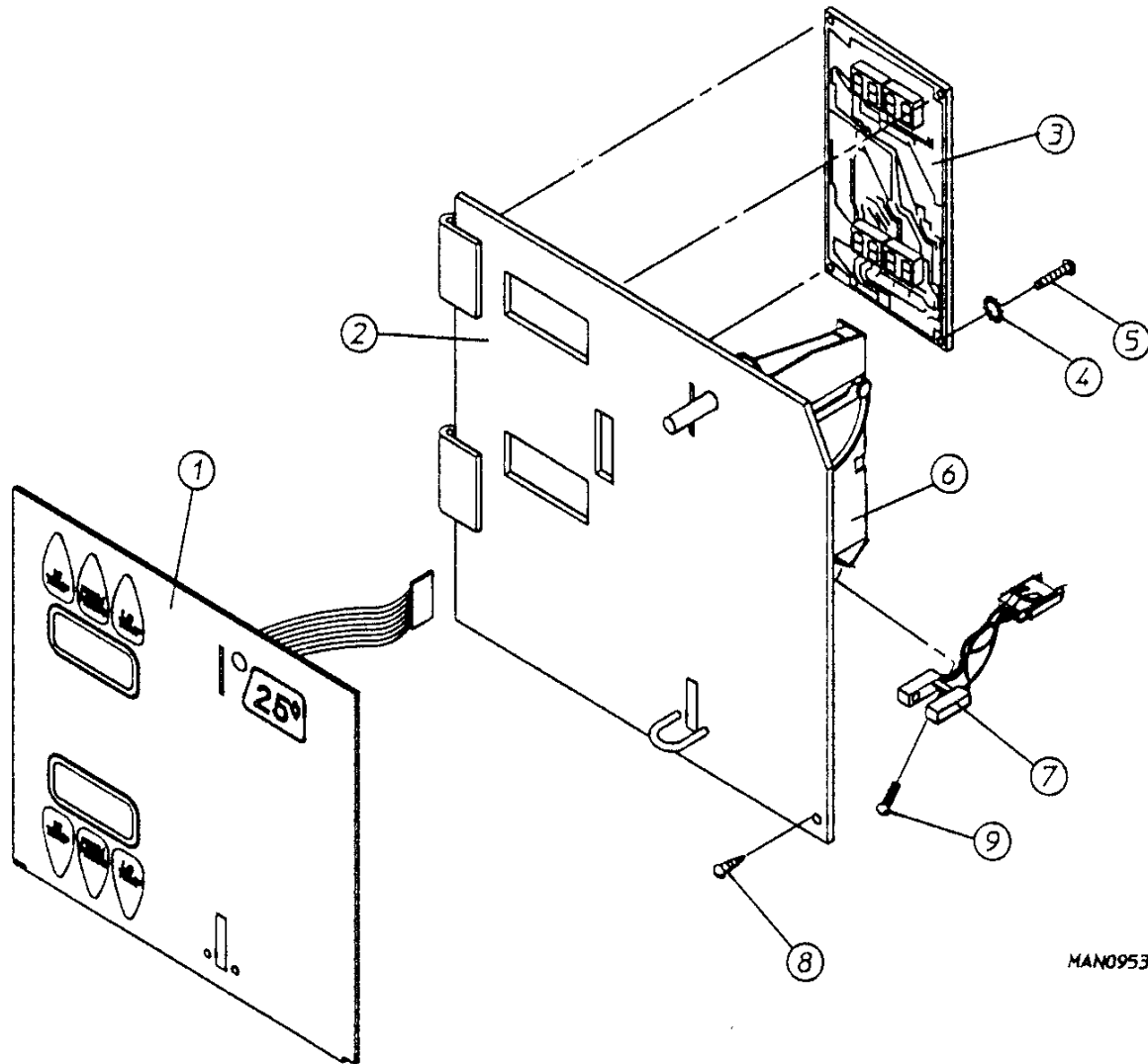


Illus. No.	Part No.	Qty.	Description
1	880769*	1	Locking Lint Drawer (Basket) Assembly Complete Less Lock (includes illus. nos. 1 and 2)
	880770	1	Stainless Steel Locking Lint Drawer (Basket) Assembly Complete Less Lock (includes illus. nos. 1 and 2)
2	117600	3	Noise Suppressor Tape (sold by the foot)
3	—	1	Temperature Sensor Bracket <b>(refer to Temperature Sensor Probe Assembly on page 24)</b>
4	—	1	Lint Drawer (Basket) Switch <b>(refer to Lint Drawer [Basket] Switch Assembly on page 25)</b>
5	160015	1	Lint Drawer Lock Assembly (MK-100)
	160104	1	MK-100 Key Only
	160016	1	Cam Only

\* Specify color when ordering.

# Single Coin, (Dual Microprocessor Controller) Control Panel Assembly

For Single Coin 25¢ Models Only

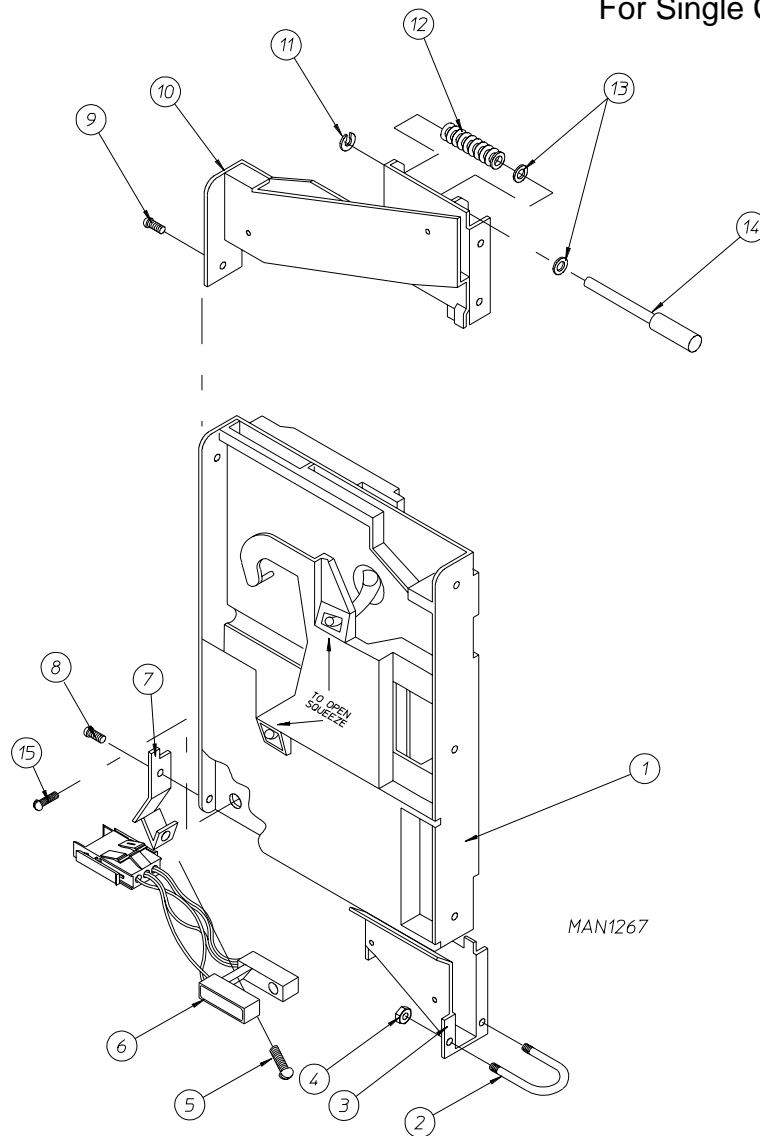


Illus. No.	Part No.	Qty.	Description
1	112562	1	Single Coin Twin-Keypad Label Only
2	824033	1	Microprocessor Control Panel with 25¢ Coin Acceptor Complete with Battery Holder (includes illus. nos. 1 through 7 and 9)
	824012	1	Single Coin Control Panel 24v Control Less Acceptor (includes illus. nos. 1 through 5)
	850437	1	Dual Microprocessor Controller Control Panel Only
3	137234	1	Phase 5 Dual Microprocessor Controller Only
	824998	1	Phase 5 Battery Clip
4	153010	2	#6 Star Washer
5	150005	2	#6-32 x 1/4" Phillips Round Head Machine Screw
6	—	1	25¢ Coin Acceptor Only <b>(refer to 25¢ Coin Acceptor Component Listing on page 9)</b>
7	137056	1	Optical Switch Only
8	150301	1	#8-18 x 7/16" Phillips Pan Head TEK Screw
9	151016	1	#4-40 x 5/16" Slotted Pan Head Machine Screw



# 25¢ Coin Acceptor Component Listing

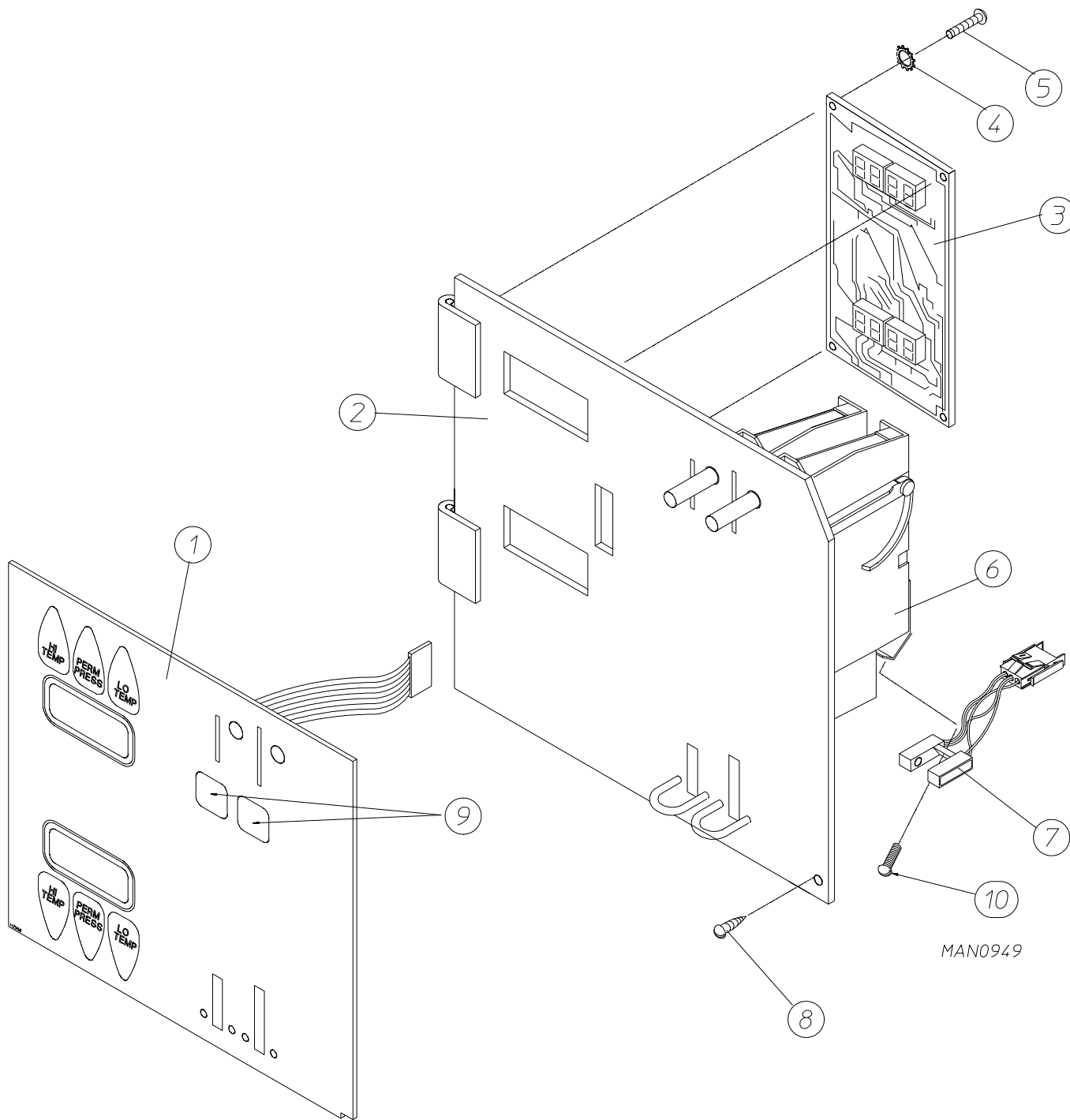
For Single Coin 25¢ Models Only



Illus. No.	Part No.	Qty.	Description
1	125707	1	Coin Acceptor Body Only
2	154320	1	#4-40 x 11/16" x 1" U-Bolt Only
3	880800	1	Coin Acceptor Lower Reject with Bracket Kit (includes illus. nos. 3 through 15)
	125720	1	Coin Acceptor Lower Reject with Bracket Only
4	152016	2	#4-40 Hex Nut
5	150020	1	#4-40 x 5/16" Slotted Pan Head Machine Screw
6	137056	1	Optical Switch Only
7	137049	1	Optical Switch Mounting Bracket Only
8	150020	1	#4-40 x 5/16" Slotted Pan Head Machine Screw
9	150020	1	#4-40 x 5/16" Slotted Pan Head Machine Screw
10	125715	1	Coin Acceptor Upper Assembly Complete (includes illus. nos. 10 through 14)
11	125706	1	3/16" Coin Acceptor Retaining Ring Only
12	125704	1	Coin Acceptor Spring Only
13	125705	2	Coin Acceptor Spacer Only
14	125703	1	Coin Acceptor Rod Only
15	150110	1	#8-32 x 1/4" Binding Head Phillips Machine Screw

# Dual Coin, (Dual Microprocessor Controller) Control Panel Assembly

For Export Models Only



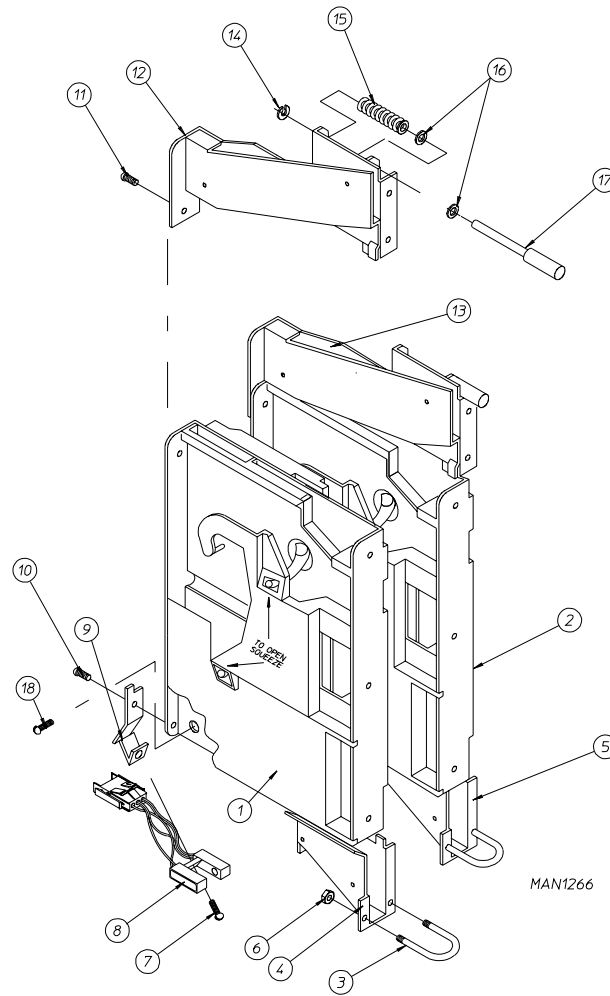
# Dual Coin, (Dual Microprocessor Controller) Control Panel Assembly

For Export Models Only

<u>Illus. No.</u>	<u>Part No.</u>	<u>Qty.</u>	<u>Description</u>
1	112557	1	Dual Microprocessor Controller Coin Twin Keypad Label Only
2	824019	1	Dual Microprocessor Controller Dual Coin Control Panel Assembly Less Coin Acceptor (includes illus. nos. 1 through 5)
	850447	1	Dual Coin Control Panel Only
3	137234	1	Phase 5 Dual Microprocessor Controller Only
	824998	1	Phase 5 Battery Clip
4	153010	2	#6 Star Washer
5	150005	2	#6-32 x 1/4" Phillips Round Head Machine Screw
6	————	1	Dual Coin Acceptor Only <b>(refer to Dual Coin Acceptor Component Listing on page 12)</b>
7	137056	2	Optical Switch Only
8	150301	1	#8-18 x 7/16" Phillips Pan Head TEK Screw
9	112153	1	25¢ / \$1 Currency Label (Canada Only)
	112152	1	20P / 50P Currency Label (United Kingdom Only)
	112154	1	20P / 1£ Currency Label (United Kingdom Only)
	112150	1	5BF / 20BF Currency Label (Belgium Only)
	112151	1	2FF / 5FF Currency Label (France Only)
	112155	1	5KR / 10KR Currency Label (Denmark Only)
	112156	1	25¢ / 1G Currency Label (Netherlands Only)
10	152016	1	#4-40 x 5/16" Slotted Pan Head Machine Screw

# Dual Coin Acceptor Component Listing

For Export Models Only



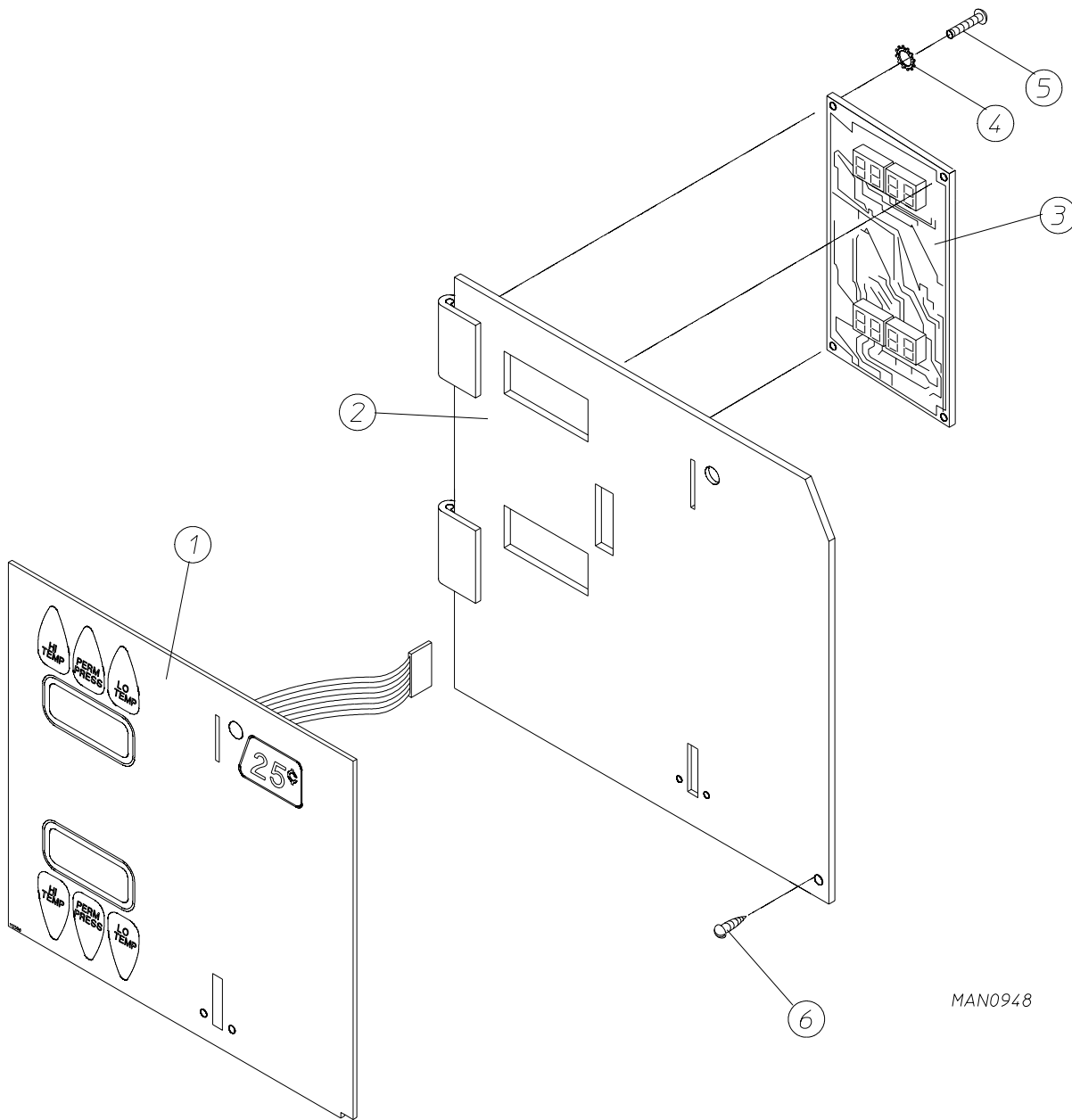
Illus. No.	Part No.	Qty.	Description
1	125726	1	\$1 Canadian Coin Acceptor Body Only
	125729	1	50 English Pence (50P) Coin Acceptor Body Only
	125730	1	1 English Pound (1£) Coin Acceptor Body Only
	125732	1	20 Belgian Franc (20BF) Coin Acceptor Only
	125735	1	5 Franc (5FF) Coin Acceptor Body Only
	125738	1	10 Danish Krone (10KR) Coin Acceptor Body Only
	125740	1	1 Dutch Guilder (1G) Coin Acceptor Body Only
	2	125725	1
125728		1	20 English Pence (20P) Coin Acceptor Body Only
125731		1	5 Belgian Franc (5BF) Coin Acceptor Body Only
125734		1	2 French Franc (2FF) Coin Acceptor Body Only
125737		1	5 Danish Krone (5KR) Coin Acceptor Body Only
125739		2	25¢ Dutch Guilder Coin Acceptor Body Only
3	154320	2	#4-40 x 11/16" x 1" U-Bolt Only
4	880801	1	Large Lower Reject with Bracket Kit (includes illus. nos. 4 and 18)
	125721	1	\$1 Canadian Coin Acceptor Lower Assembly Only
		1	50 English Pence (50P) Coin Acceptor Lower Assembly Only
		1	1 English Pound (1£) Coin Acceptor Lower Assembly Only
		1	20 Belgian Franc (20BF) Coin Acceptor Lower Assembly Only
		1	5 French Franc (5FF) Coin Acceptor Lower Assembly Only
		1	10 Danish Krone (10KR) Coin Acceptor Lower Assembly Only
		1	1 Dutch Guilder (1G) Coin Acceptor Lower Assembly Only

# Dual Coin Acceptor Component Listing

For Export Models Only

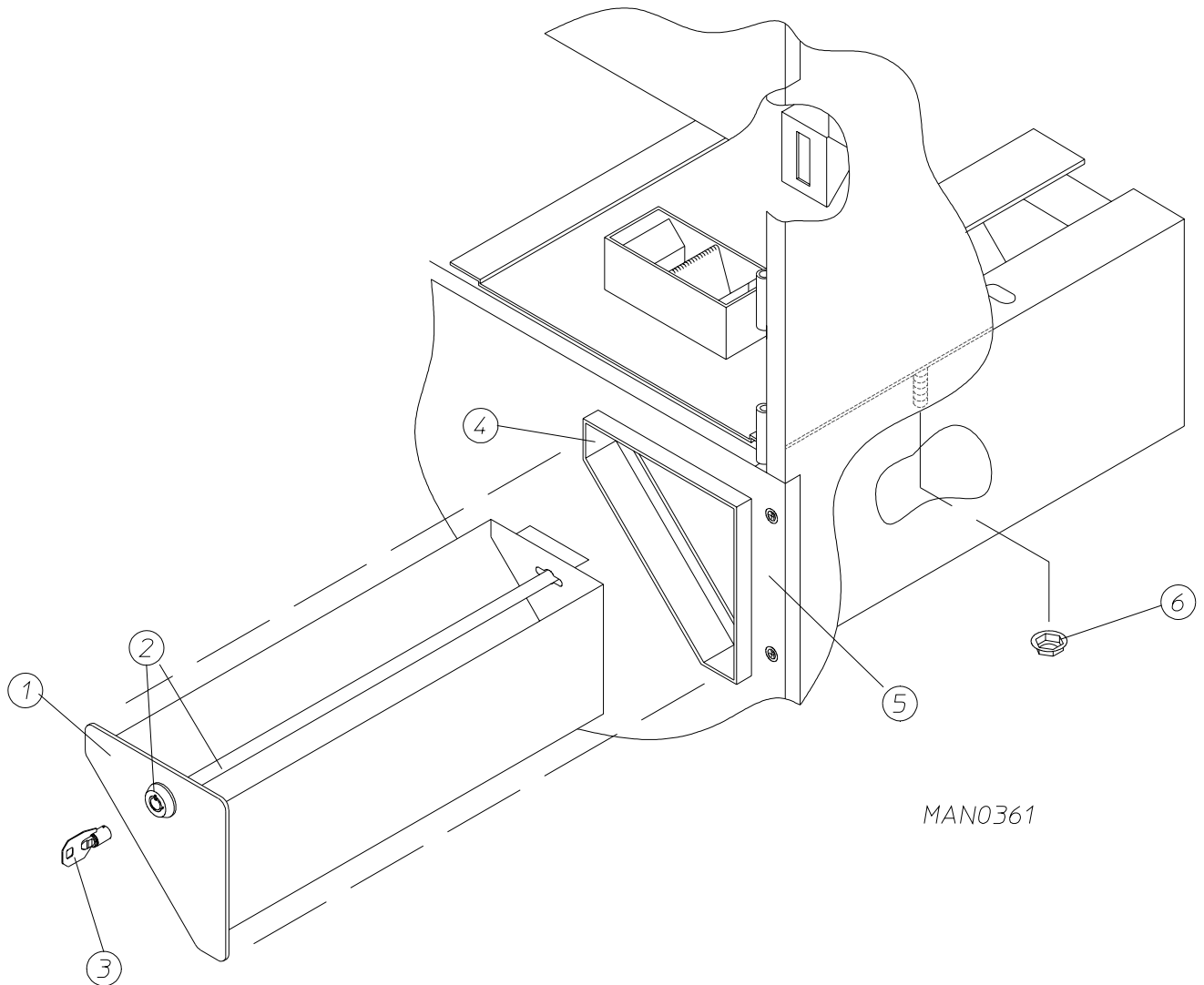
<u>Illus. No.</u>	<u>Part No.</u>	<u>Qty.</u>	<u>Description</u>
5	880800	1	Small Lower Reject with Bracket Kit (includes illus. nos. 5 and 18)
	125720	1	25¢ Canadian Coin Acceptor Assembly Only
		1	20 English Pence (20P) Coin Acceptor Assembly Only
		1	5 Belgian Franc (5BF) Coin Acceptor Assembly Only
		1	25¢ Dutch Guilder Coin Acceptor Assembly Only
	880801	1	Large Lower Reject with Bracket Kit (includes illus. nos. 5 and 18)
	125721	1	2 French Franc (2FF) Coin Acceptor Assembly Only
		1	5 Danish Krone (5KR) Coin Acceptor Assembly Only
6	152016	4	#4-40 Hex Nut
7	150020	2	#4-40 x 5/16" Slotted Pan Head Machine Screw
8	137056	2	Optical Switch
9	137049	2	Optical Switch Mounting Bracket
10	150020	2	#4-40 Hex Nut
11	150020	2	#4-40 x 5/16" Slotted Pan Head Machine Screw
12	125716	1	\$1 Canadian Coin Acceptor Upper Assembly Complete (includes illus. nos. 12 and 14 through 17)
		1	50 English Pence (50P) Coin Acceptor Upper Assembly Complete (includes illus. nos. 12 and 14 through 17)
		1	1 English Pound (1£) Coin Acceptor Upper Assembly Complete (includes illus. nos. 12 and 14 through 17)
		1	20 Belgian Franc (20BF) Coin Acceptor Upper Assembly Complete (includes illus. nos. 12 and 14 through 17)
		1	5 French Franc (5FF) Coin Acceptor Upper Assembly Complete (includes illus. nos. 12 and 14 through 17)
		1	10 Danish Krone (10KR) Coin Acceptor Upper Assembly Complete (includes illus. nos. 12 and 14 through 17)
		1	1 Dutch Guilder (1G) Coin Acceptor Upper Assembly Complete (includes illus. nos. 12 and 14 through 17)
13	125715	1	25¢ Canadian Coin Acceptor Upper Assembly Complete (includes illus. nos. 13 through 17)
		1	20 English Pence (20P) Coin Acceptor Upper Assembly Complete (includes illus. nos. 13 through 17)
		1	5 Belgian Franc (5BF) Coin Acceptor Upper Assembly Complete (includes illus. nos. 13 through 17)
		1	25¢ Dutch Guilder Coin Acceptor Upper Assembly Complete (includes illus. nos. 13 through 17)
	125716	1	2 French Franc (2FF) Coin Acceptor Upper Assembly Complete (includes illus. nos. 13 through 17)
		1	5 Danish Krone (5KR) Coin Acceptor Upper Assembly Complete (includes illus. nos. 13 through 17)
14	125706	2	3/16" Coin Acceptor Retainer Ring Only
15	125704	2	Coin Acceptor Spring Only
16	125705	4	Coin Acceptor Spacer Only
17	125703	2	Coin Acceptor Rod Only
18	150110	2	#8-32 x 1/4" Binding Head Phillips Machine Screw

# Non-Coin, (Dual Microprocessor Controller) Control Panel Assembly



MAN0948

Illus. No.	Part No.	Qty.	Description
1	112556	1	Single Coin Twin-Keypad Label Only
2	824009	1	Non-Coin Control Panel 24v Assembly Complete (includes illus. nos. 1 through 5)
	824011	1	Non-Coin Control Panel 24v Assembly Complete with Battery Option (includes illus. nos. 1 through 5)
3	137234	1	Phase 5 Dual Microprocessor Controller
	824998	1	Phase 5 Battery Clip
4	153010	2	#6 Star Washer
5	150005	2	#6-32 x 1/4" Phillips Round Head Machine Screw
6	150301	1	#8-18 x 7/16" Phillips Pan Head TEK Screw



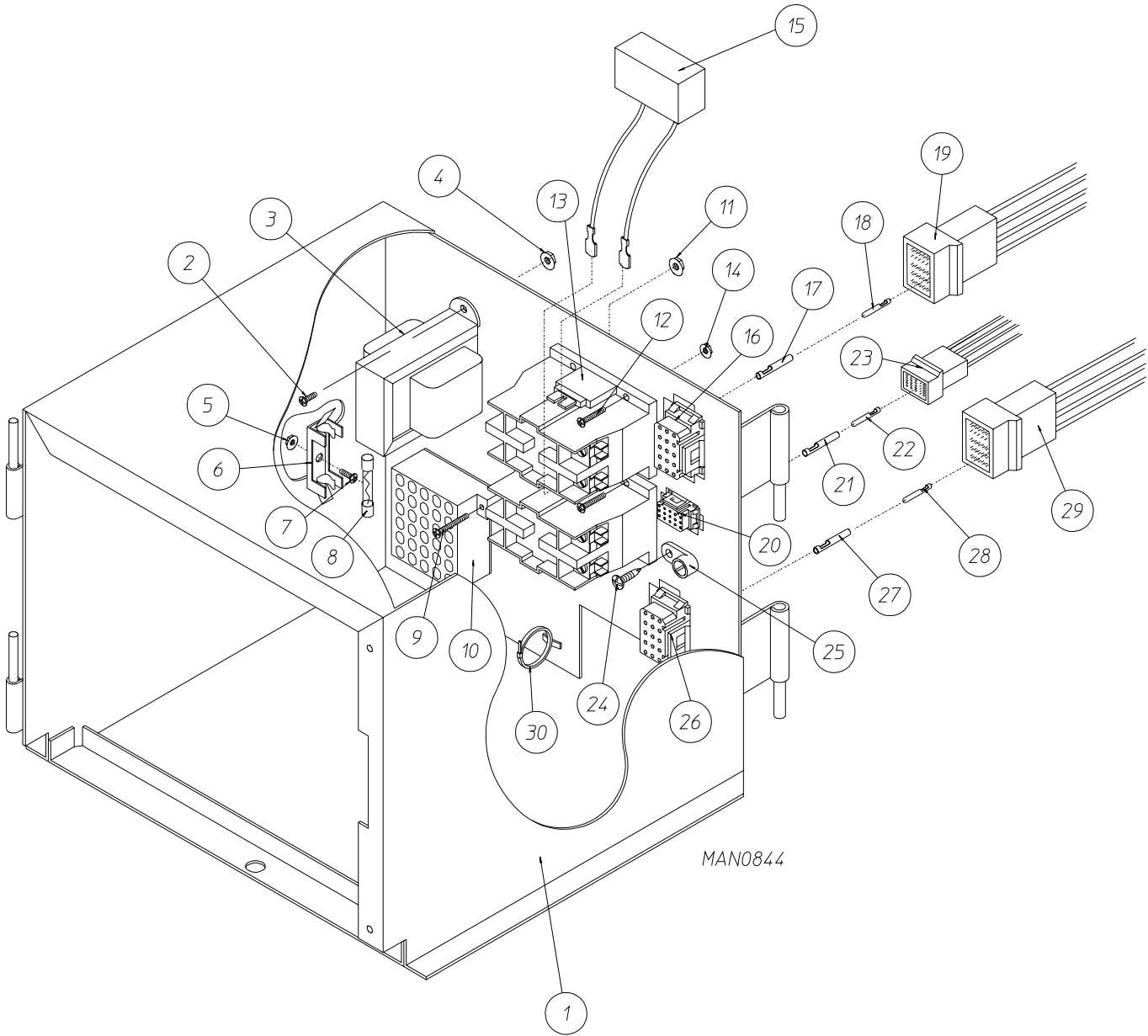
MAN0361

<u>Illus. No.</u>	<u>Part No.</u>	<u>Qty.</u>	<u>Description</u>
1*	880118	1	Coin Box Assembly Only Less Lock
2	160036**	1	ACE® Lock Assembly with Key
3	160136**	1	ACE® Key Only
4*	880117	1	Coin Vault Assembly Only Less Lock (includes illus. nos. 1, 4, and 6)
5	800690*	1	Lower Front Panel <b>(refer to Lower Front Panel Assembly on page 19)</b>
	800687	1	Stainless Steel Lower Front Panel <b>(refer to Lower Front Panel Assembly on page 19)</b>
6	152014	4	1/4-20 Free Spin Wash Nut

\* Specify color when ordering.

\*\* Specify key number when ordering.

# Dual Microprocessor Controller Control Box Assembly





# Dual Microprocessor Controller Control Box Assembly

---

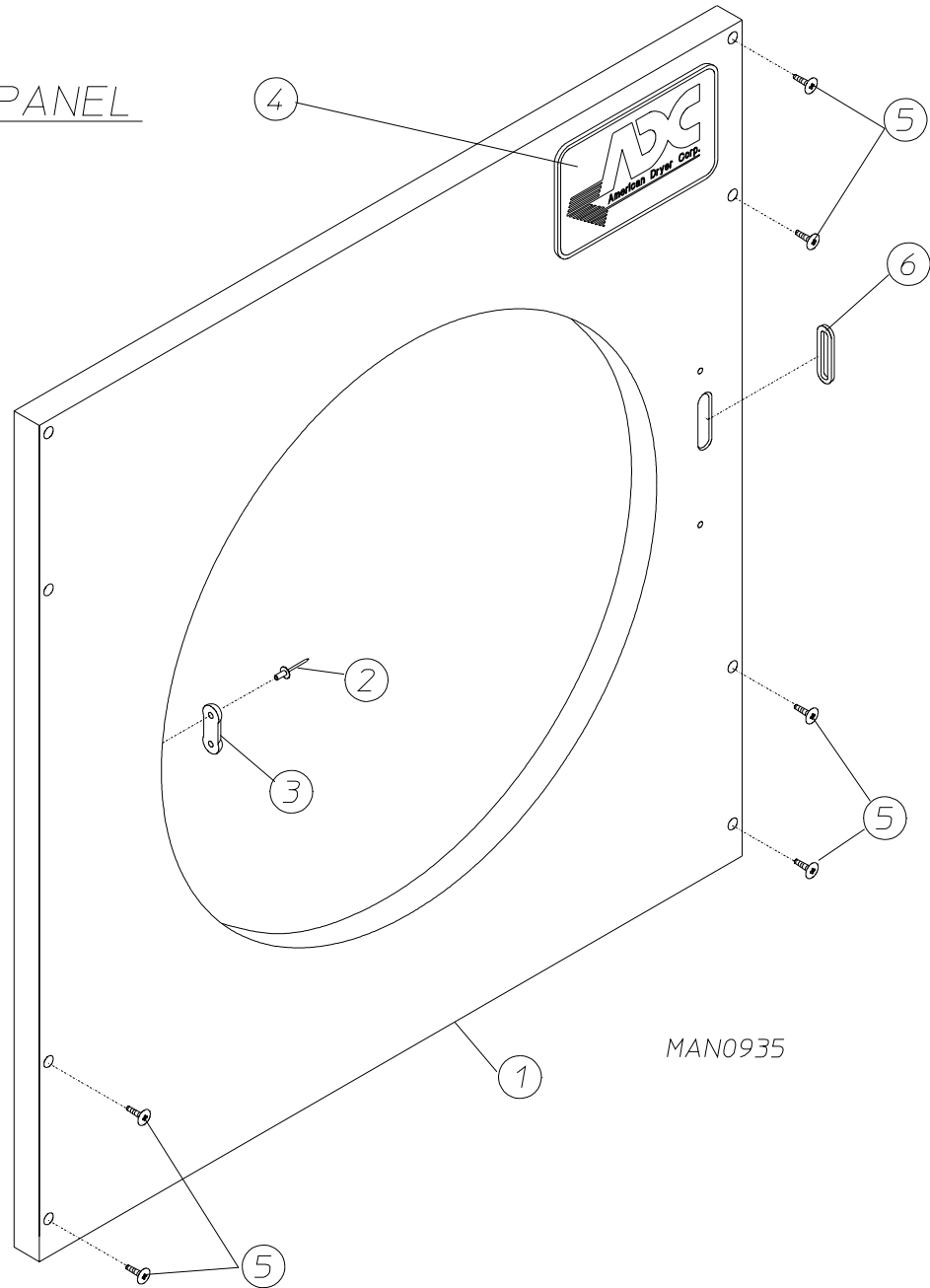
<u>Illus. No.</u>	<u>Part No.</u>	<u>Qty.</u>	<u>Description</u>
1	824437	1	Electric Box Complete (208 Volt) (includes illus. nos. 1 through 17, 20, 21, and 24 through 27)
	824438	1	Electric Box Complete (220 / 230 / 240 Volt) (includes illus. nos. 1 through 17, 20, 21, and 24 through 27)
	824439	1	Electric Box Complete (120 Volt) (includes illus. nos. 1 through 17, 20, 21, and 24 through 27)
2	150103	2	#8-32 x 3/4" Round Head Machine Screw
3	141403	1	24VAC Transformer
4	151001	2	#8-32 Pal Nut
5	151000	1	#6-32 Pal Nut
6*	136008	**	3-Position Fuse Block
7	150002	1	#6-32 x 1" Round Head Machine Screw
8*	136057	**	1/2-Amp (Slo-Blo) Fuse Only
9	150002	2	#6-32 x 1" Round Head Machine Screw
10	120715	1	30 Position Terminal Block
11	151000	2	#6-32 Pal Nut
12	150103	4	#8-32 x 3/4" Round Head Machine Screw
13	132451	2	2-Pole Connector
14	151001	4	#8-32 Pal Nut
15	824828	2	RC Network with Connectors
16	122626	1	15-Pin Socket Connector Only
17	122705	9	Socket Terminal Only
18	122704	9	Pin Terminal Only
19	122625	1	15-Pin Connector Only
	137025	1	6/15 Position Strain Relief ... Not Illustrated
20	122631	11	6-Pin Socket Connector Only
21	122705	6	Socket Terminal Only
22	122704	6	Pin Terminal Only
23	122630	1	6-Pin Connector Only
	137025	1	6/15 Position Strain Relief ... Not Illustrated
24	150415	1	#10-16 x 1/2" Phillips Round Head CrimpTite Screw
25	121010	1	L-70 Ground Lug
26	122626	1	15-Pin Connector Only
27	122705	7	Socket Terminal Only
28	122704	7	Pin Terminal Only
29	122625	1	15-Pin Connector Only
	137025	1	6/15 Position Strain Relief ... Not Illustrated
30	121494	10	Push-Mount Wire Tie
—	122801	1	Pin / Socket Extraction Tool
—	122800	1	Microprocessor (female) Pin Extraction Tool

\* Check fuse rating for verification.

\*\* 115v Application quantity is one.

# Upper Front Panel Assembly

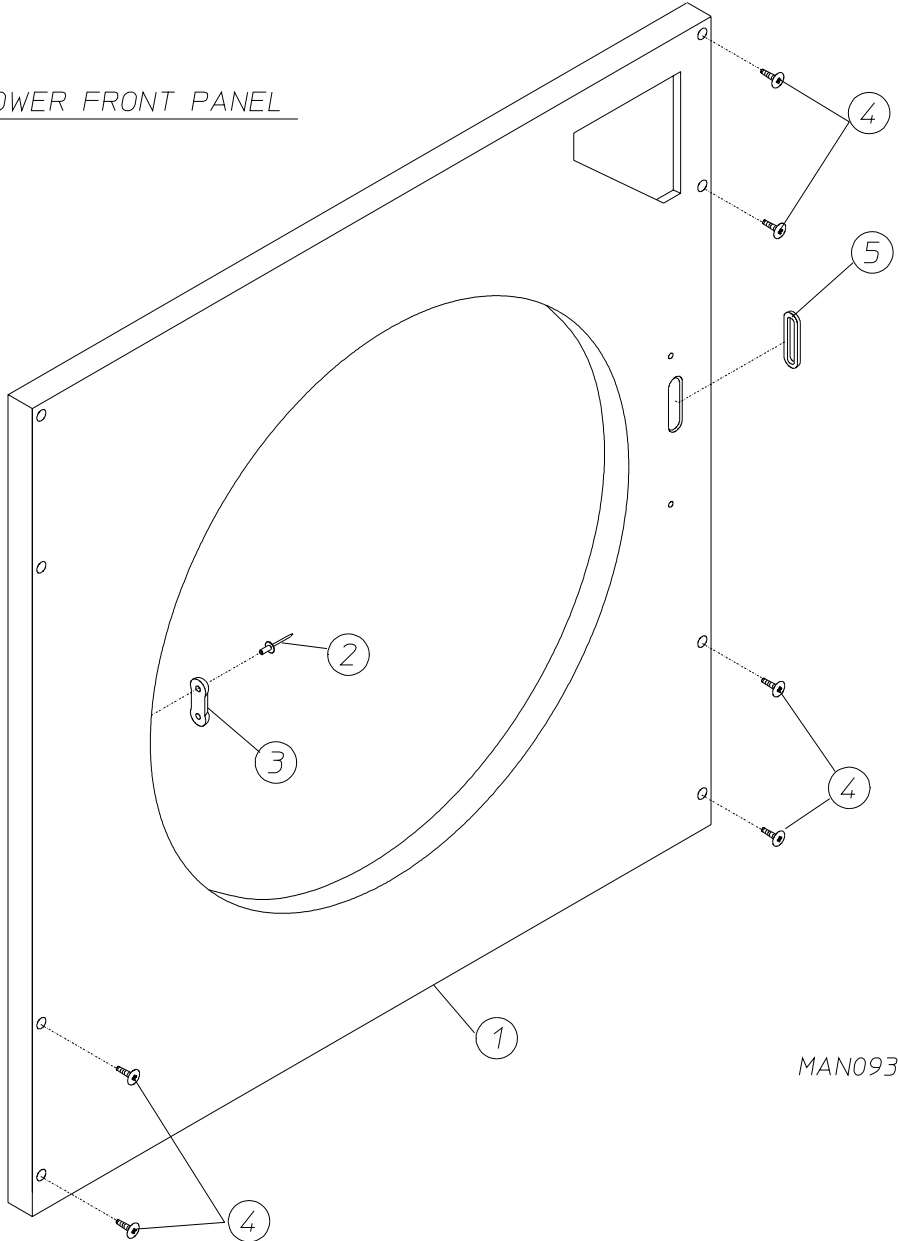
## UPPER FRONT PANEL



Illus. No.	Part No.	Qty.	Description
1	800685*	1	Upper Front Panel Assembly Complete with Hinge (includes illus. nos. 1 through 3 and 6)
	800686	1	Stainless Steel Upper Front Panel Assembly Complete with Hinge (includes illus. nos. 1 through 3 and 6)
2	154215	2	1/8" Pop Rivet
3	170330	1	Friction Door Latch
4	881053	1	ADC Logo with Tape
	870011	-	Logo Double Sided Tape Kit
5	150415	8	#10-16 x 1/2" Phillips Round Head Screw
6	121405	1	Rubber Grommet

\* Specify color when ordering.

LOWER FRONT PANEL

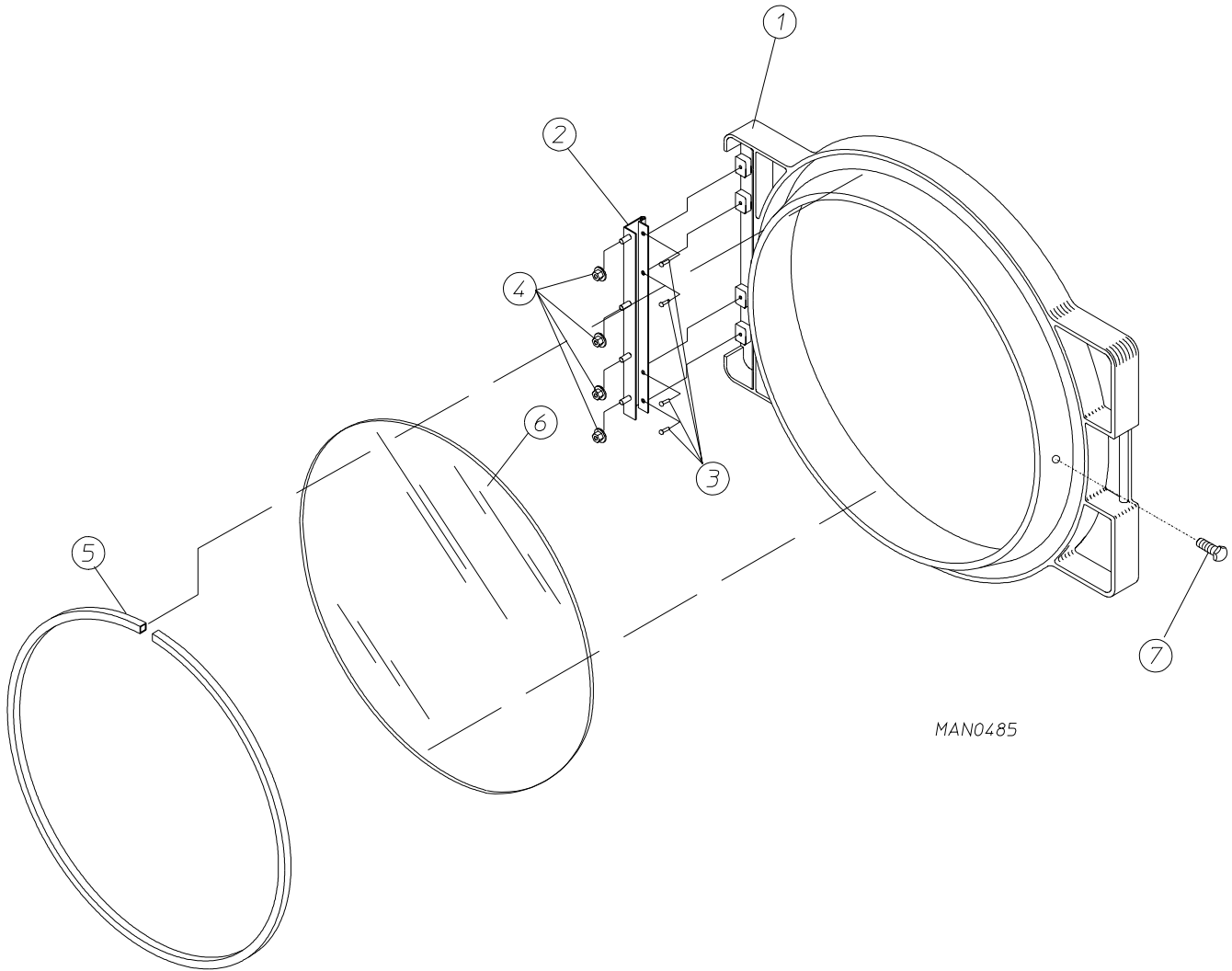


MAN0936

Illus. No.	Part No.	Qty.	Description
1	800690*	1	Lower Front Panel Assembly Complete with Hinge for Coin Models Only (includes illus. nos. 1 through 3 and 5)
	800687	1	Stainless Steel Lower Front Panel Assembly Complete with Hinge for Coin Models Only (includes illus. nos. 1 through 3 and 5)
	800685*	1	Lower Front Panel Assembly Complete with Hinge for Non-Coin Models Only (includes illus. nos. 1 through 3 and 5)
	800686	1	Stainless Steel Lower Front Panel Assembly Complete with Hinge (includes illus. nos. 1 through 3 and 5)
2	154215	2	1/8" Pop Rivet
3	170330	1	Friction Door Latch
4	150415	8	#10-16 x 1/2" Phillips Round Head Screw
5	121405	1	Rubber Grommet

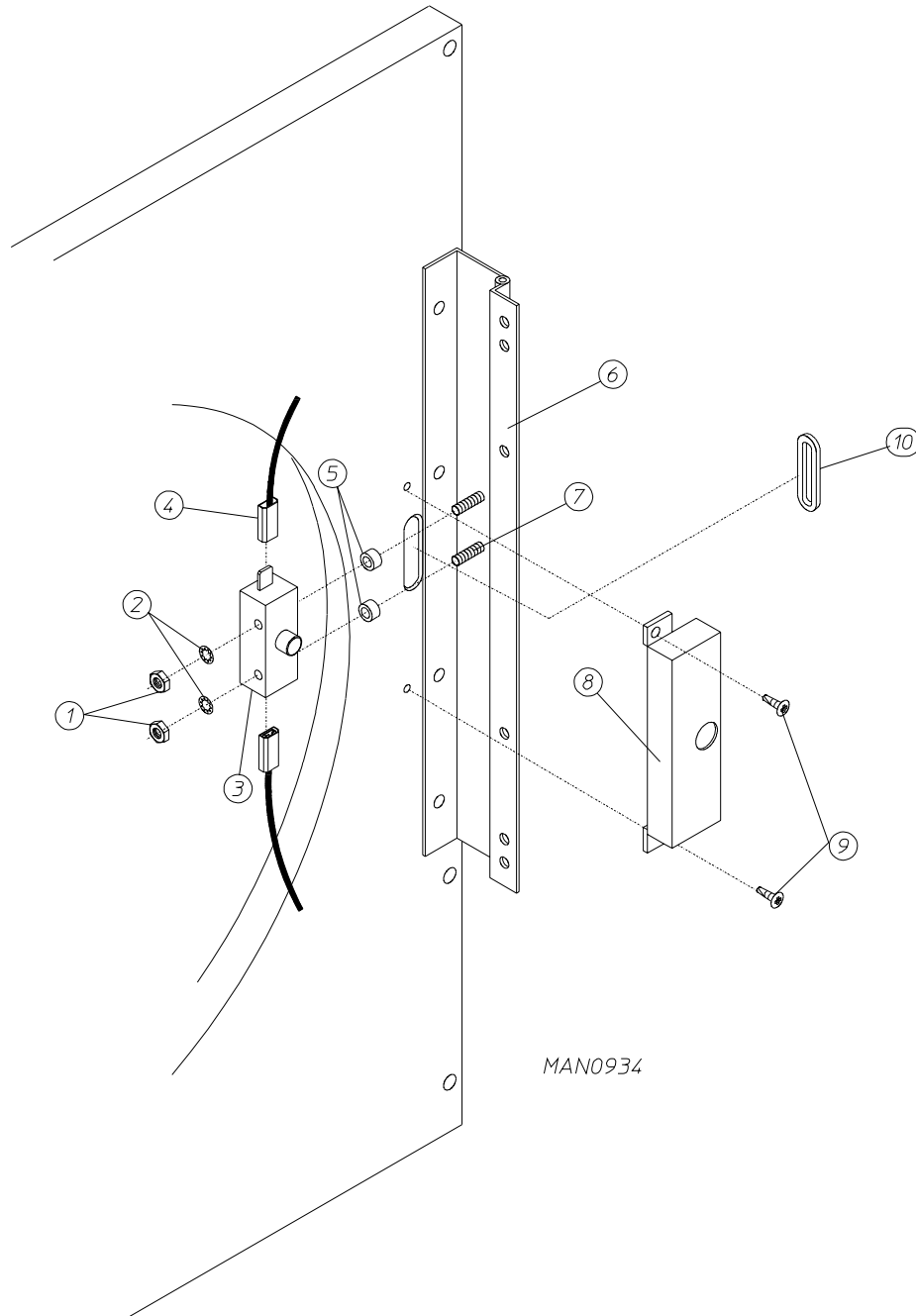
\* Specify color when ordering.

# Main Door Assembly



MAN0485

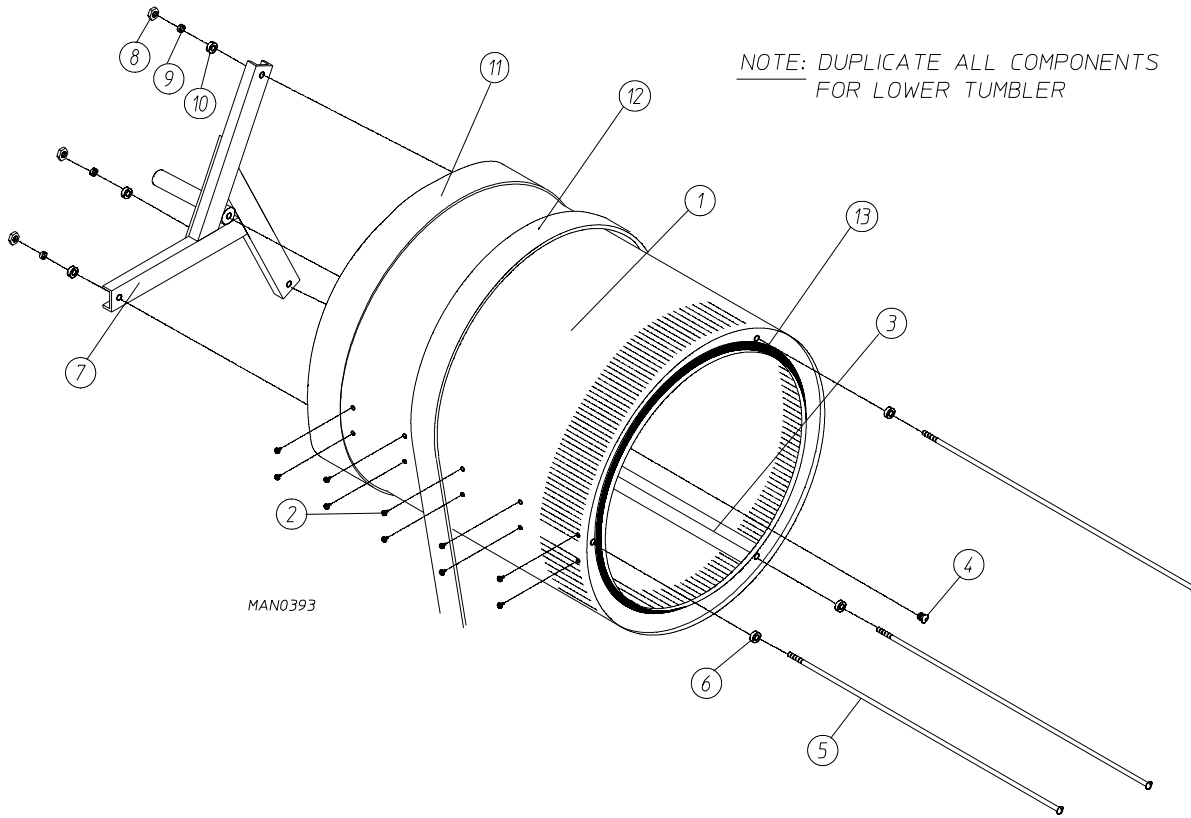
<u>Illus. No.</u>	<u>Part No.</u>	<u>Qty.</u>	<u>Description</u>
1	800286	1	Black Main Door Assembly Complete (includes illus. nos. 1 and 5 through 7)
2	800448	1	12-1/2" Stainless Steel Main Door Hinge
3	150410	4	#10-24 x 3/8" Phillips Pan Head Taptite Screw
4	152014	4	1/4-20 Free Spin Wash Nut
5	102353	1	Main Door Gasket
6	102210	1	20-7/16" Door Glass
	170730	1	Glass Adhesive for Lightweight Main Door Assembly (10.3 oz. Cartridge)
7	150431	1	Main Door Latch Screw (#10 x 7/16" Dome Head Screw)



Illus. No.	Part No.	Qty.	Description
1	152013	2	#6-32 Hex Nut
2	153008	2	#6 Split Lock Washer
3	137005	1	Single Pole Door Switch
4	121028	2	Insulated Female Terminal
5	154281	2	3/8" Standard Nylon Spacers
6	800448	1	12-1/2" Stainless Steel Main Door Hinge
7	153565	2	#6 Stud
8	313218	1	Main Door Switch Housing
9	150201	2	#10-32 x 1/4" Phillips Pan Head Screw
10	121405	1	Rubber Grommet

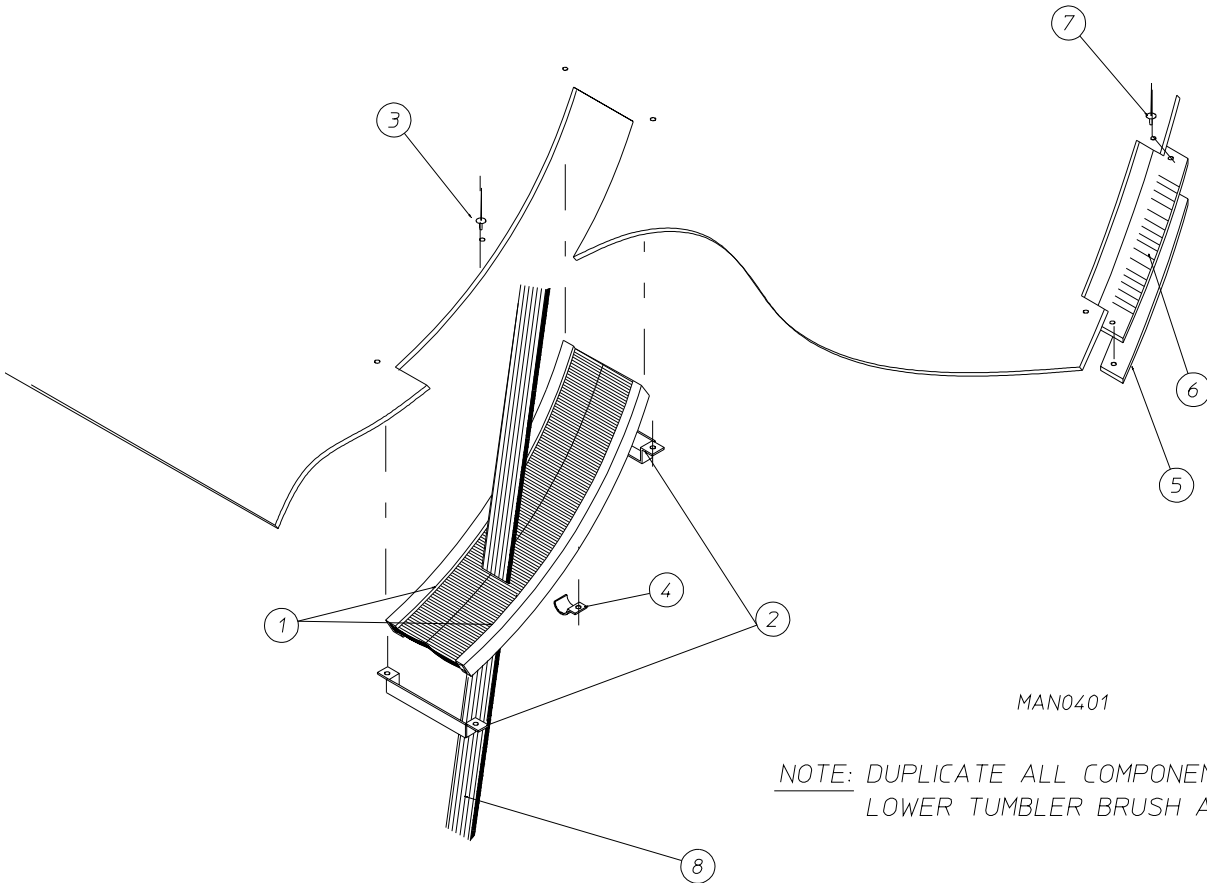
# Tumbler / Support Assembly

## TUMBLER ASSEMBLY



Illus. No.	Part No.	Qty.	Description
1	800832	1	Tumbler Support Assembly Complete with Felt Collars (includes illus. nos. 1 through 11 and 13)
	800892	1	Stainless Steel Tumbler and Support Assembly Complete with Felt Collars (includes illus. nos. 1 through 11 and 13)
	800722	1	Tumbler Only without Felt Collars (includes illus. nos. 1 through 3)
	800842	1	Stainless Steel Tumbler Only without Felt Collars (includes illus. nos. 1 through 3)
2	150415	30	#10-16 x 1/2" Phillips Round Head Crimpite Screw
3	301315	2	Short Tumbler Rib
	301316	1	Tall Tumbler Rib
	301414	2	Stainless Steel Short Tumbler Rib
	301415	1	Stainless Steel Tall Tumbler Rib
4	150518	1	5/16-18 x 3/8" Socket Button Head Screw
5	100902	3	5/16-18 x 31" Tie Rod
6	153001	3	5/16" Flat Washer
7	850061	1	Tumbler Support Only
8	152004	3	5/16-18 Hex Nut
9	153002	3	5/16" Lock Washer
10	153001	3	5/16" Flat Washer
11	116003	1	Front Felt Collar
	401010	1	#847 Adhesive for Felt Collar (5 oz. Tube)
12	100130	1	12-Rib 95" Belt
13	115992	1	Felt Collar
	170730	1	Cartridge (10.3 oz.) of Silicone Adhesive

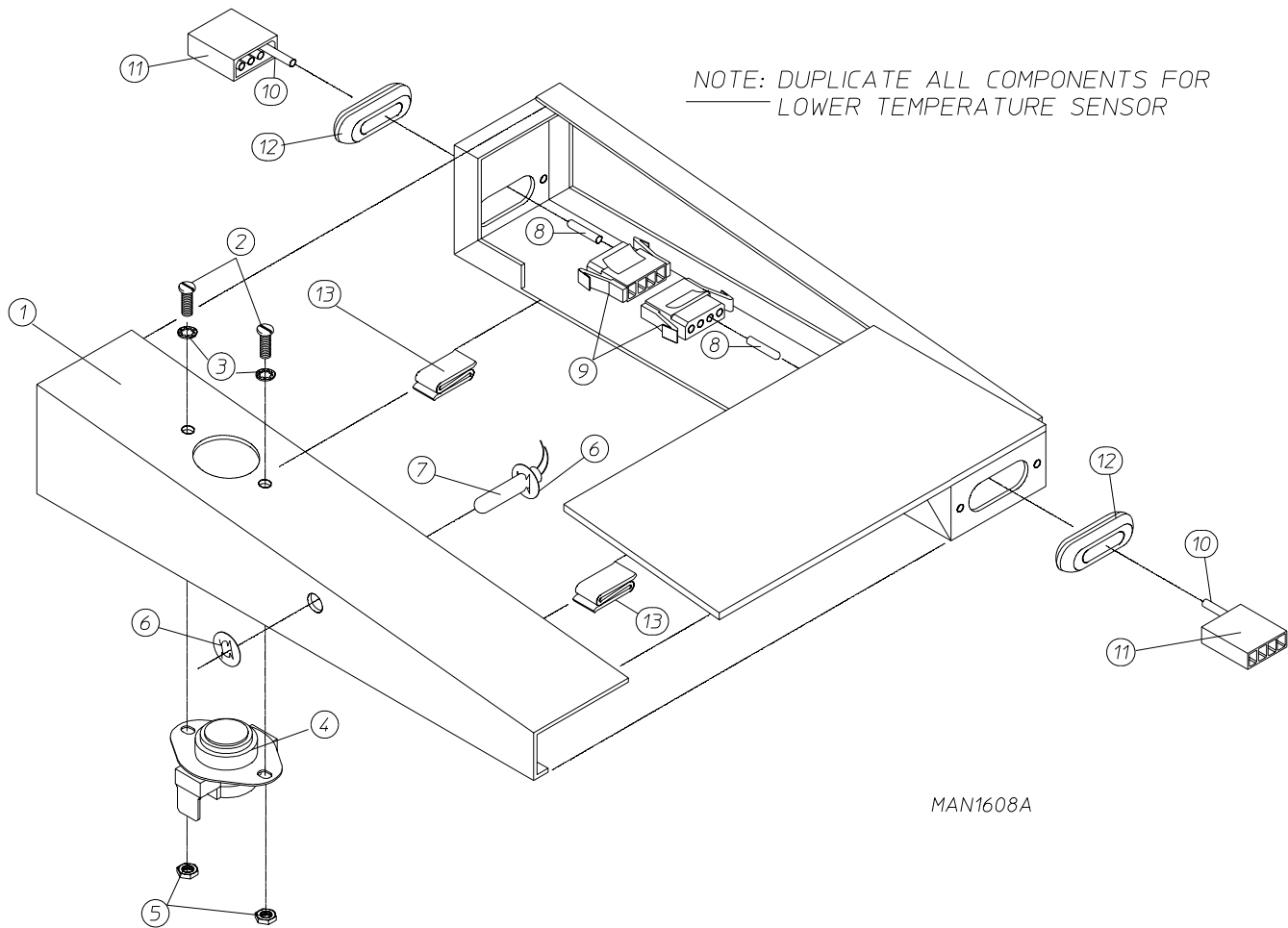
## UPPER TUMBLER BRUSH



<u>Illus. No.</u>	<u>Part No.</u>	<u>Qty.</u>	<u>Description</u>
1	170198	2	Drive Belt Sealing Brush
2	317656	2	Sealing Brush Clip End
3	154210	6	5/32" x 3/16" Pop Rivet
4	120117	2	3/8" EMT Hanger
5	317651	1	Wrapper Gasket Strip
6	102325	1	8-1/2" x 1-1/2" x 1/8" Wrapper Gasket Strip
7	154210	2	5/32" x 3/16" Pop Rivet
8	100130	1	12-Rib 95" Belt

# Temperature Sensor Probe Assembly

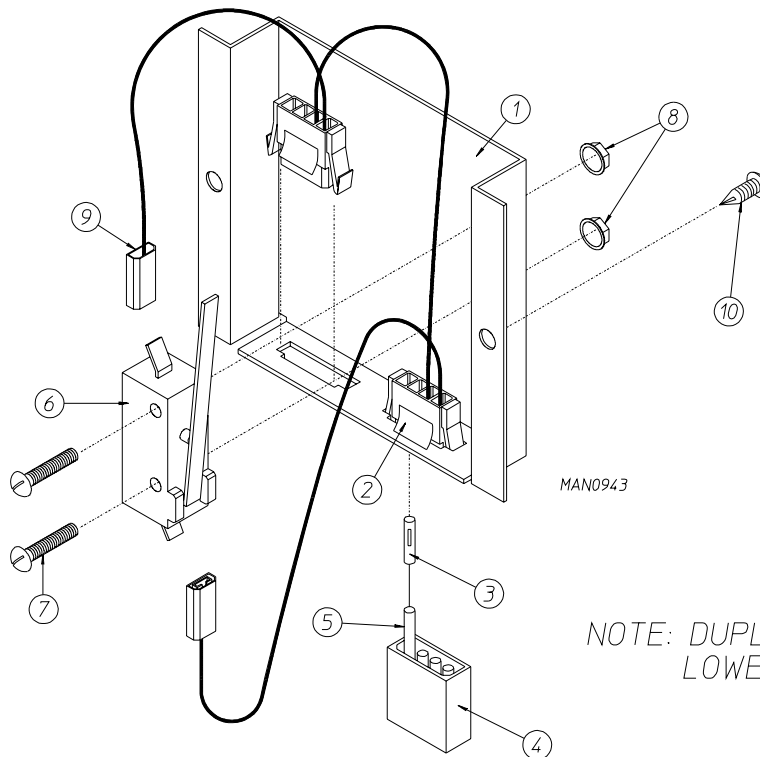
## UPPER TEMPERATURE SENSOR



Illus. No.	Part No.	Qty.	Description
1	881157	1	Temperature Sensor Bracket Assembly Complete (includes illus. nos. 1 through 9 and 12)
	881156	1	Temperature Sensor Bracket Only
2	150000	2	#6-32 x 1/4" Round Head Machine Screw
3	153010	2	#6 Star Washer
4	130106	1	170° Large Thermostat
5	152013	2	#6-32 Hex Nut
6	154007	2	1/4" Tinnerman Push-On Fastener
7	880111	1	Dual Microprocessor Controller 1/4" Temperature Sensor Probe Assembly (includes illus. nos. 6 through 9)
8	122701	8	Socket Connector Only
9	122670	2	4-Pin Socket Connector Only
10	122700	8	Pin Terminal Only
11	122604	2	4-Pin Socket Connector
	122801	1	Pin / Socket Extraction Tool
12	121405	2	Rubber Grommet
13	154060	2	Tinnerman "S" Clip



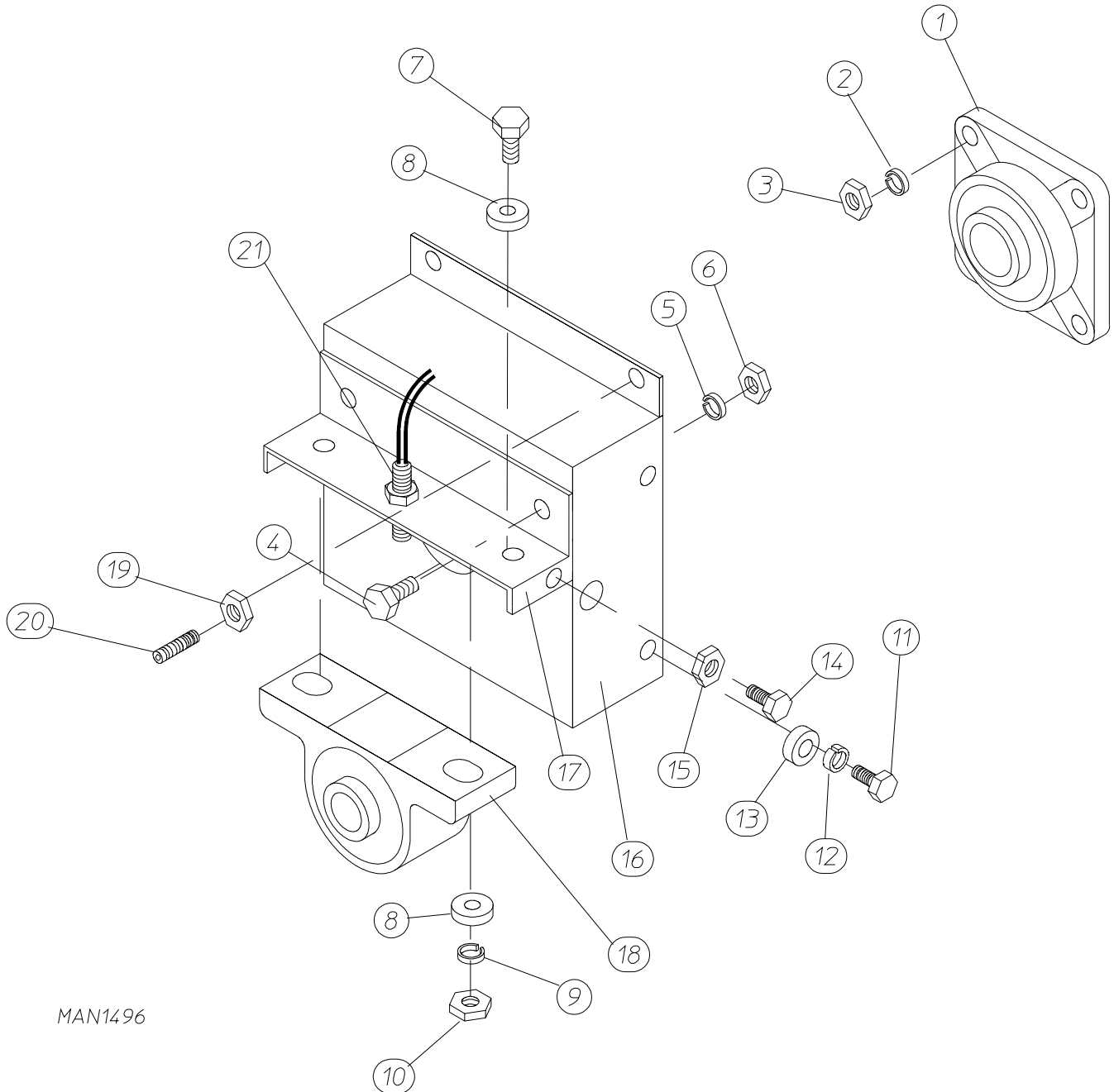
## UPPER LINT BASKET SWITCH



NOTE: DUPLICATE ALL COMPONENTS FOR LOWER LINT BASKET SWITCH

Illus. No.	Part No.	Qty.	Description
1	304039	1	Switch Box Cover Lint Basket
2	122605	2	4-Pin Socket Connector Only
3	122701	4	Socket Terminal Only
4	122604	2	4-Pin Connector Only
5	122700	4	Pin Terminal Only
6	136992	1	Lint Drawer (Basket) Safety Switch Only
7	150002	2	#6-32 x 1" Round Head Machine Screw
8	152013	2	#6-32 Hex Nut
9	824848	1	Lint Switch Bottom Harness
	824849	1	Lint Switch Top Harness
10	150301	2	#8-18 x 7/16" Phillips Pan Head TEK Screw
—	122801	1	Pin / Socket Extraction Tool

# Tumbler Bearing Assembly

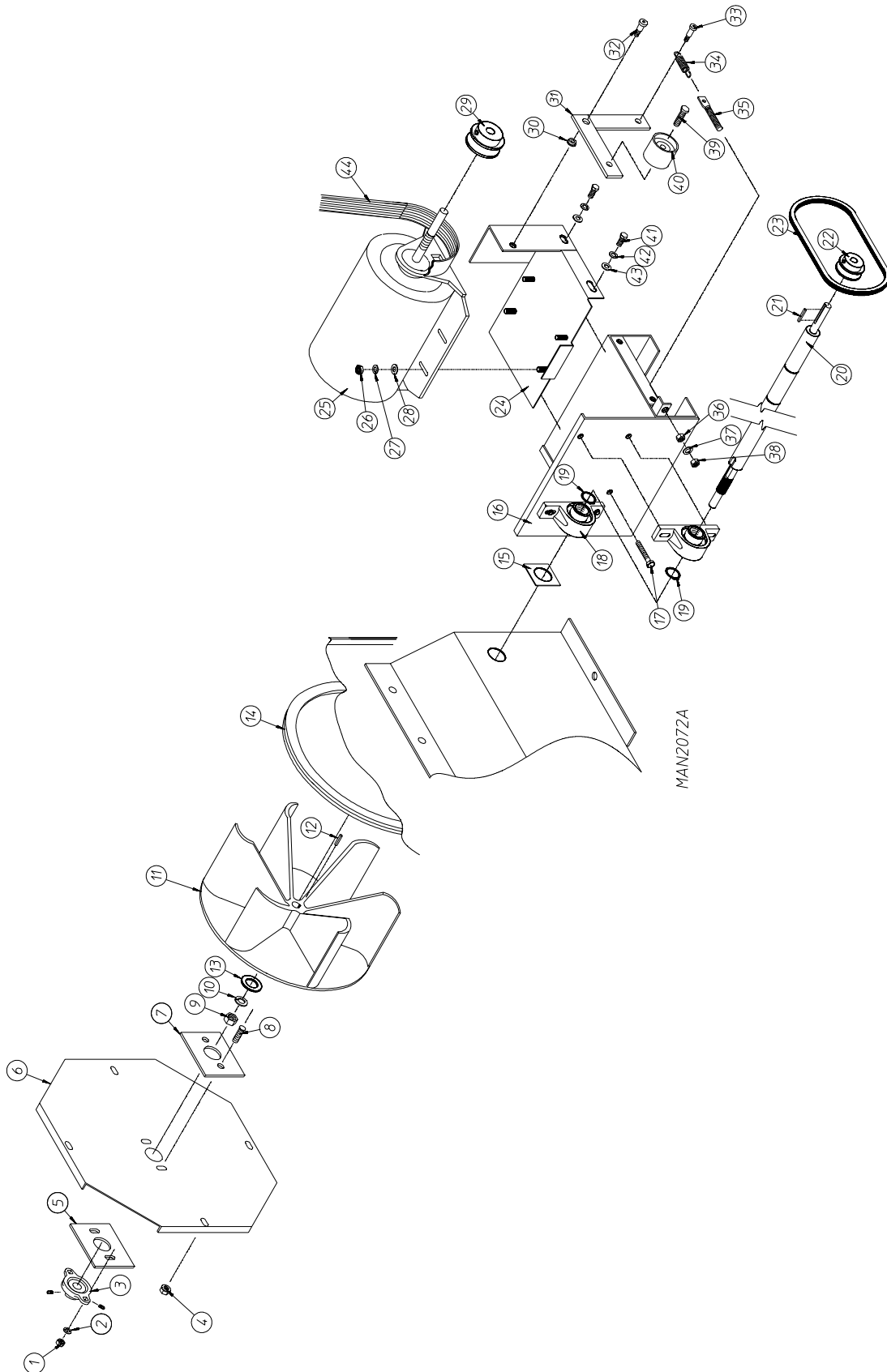


MAN1496

<u>Illus. No.</u>	<u>Part No.</u>	<u>Qty.</u>	<u>Description</u>
1	100203	1	1-3/8" Flange Bearing
2	153005	4	3/8" Lock Washer
3	152005	4	3/8-16 Hex Nut
4	150508	2	3/8-16 x 3/4" Hex Head Machine Bolt
5	153005	2	3/8" Lock Washer
6	152005	2	3/8-16 Hex Nut
7	150600	2	3/8-16 x 1-1/2" Hex Head Machine Bolt
8	153004	2*	3/8" Flat Washer
9	153005	2	3/8" Lock Washer
10	152005	2	3/8-16 Hex Nut
11	150501	4	5/16-18 x 3/4" Hex Head Machine Bolt
12	153002	4	5/16" Lock Washer
13	153001	4	5/16" Flat Washer
14	150621	2	5/16-18 x 1-1/2" Hex Head Machine Bolt
15	152004	2	5/16-18 Hex Nut
16	801107	1	1-3/8" Bearing Box Assembly Complete (includes illus. nos. 4 through 21)
	801103	1	1-3/8" Bearing Box and Support Assembly Only (includes illus. nos. 4 through 6, 16, and 17)
	801105	1	1-3/8" Bearing Box Only
17	801104	1	1-3/8" Pillow Block Bearing Support Only
	880779	1	1-3/8" Pillow Block Bearing Assembly with Magnet
19	152004	2	5/16-18 Hex Nut
20	150610	2	5/16-18 x 1-1/2" Allen Setscrew
21	824807	1	Rotational Sensor Assembly

\* Some models require a quantity of 4.

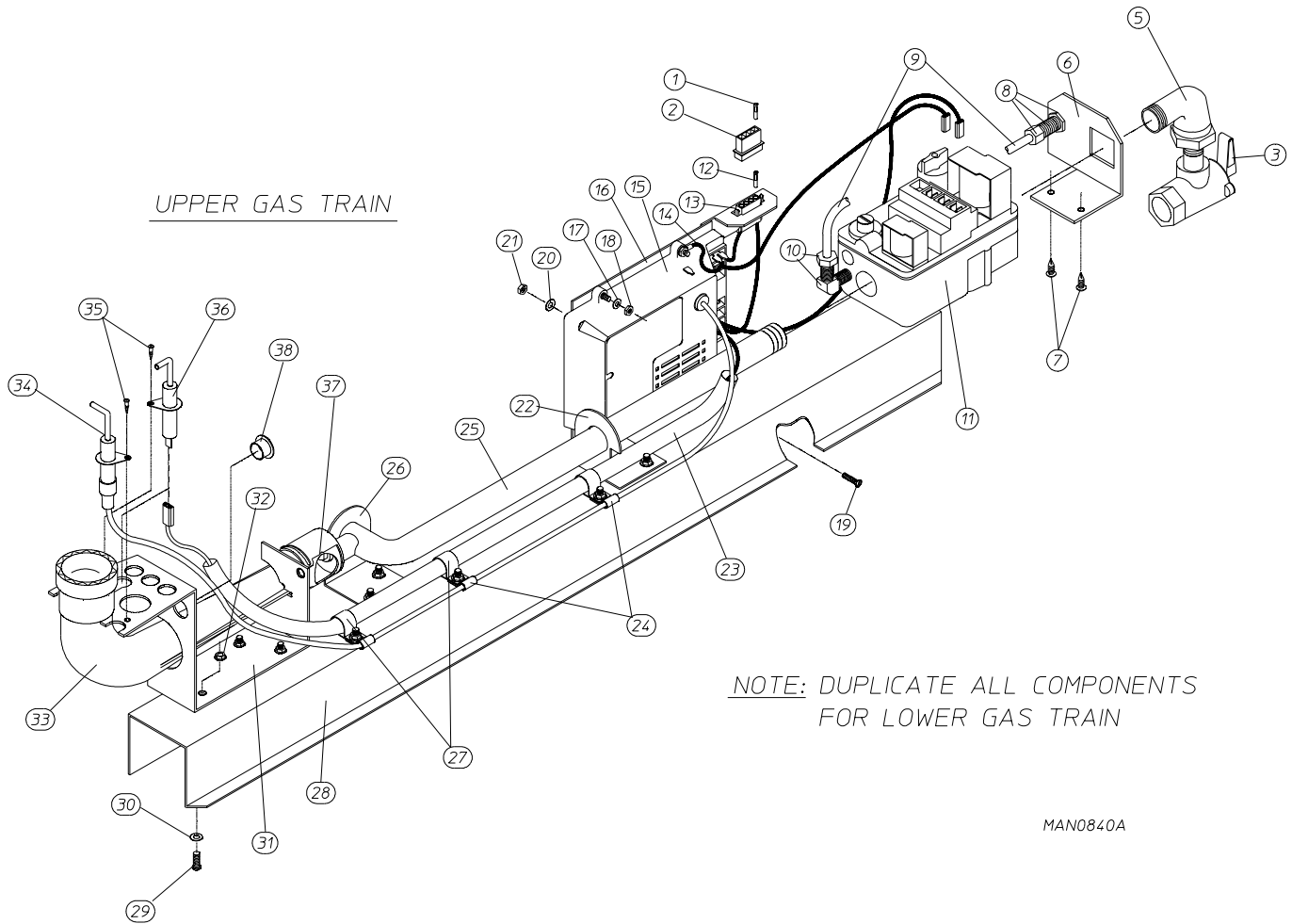
# Totally Enclosed, Non-Vent Motor / Idler Assemblies



## *Totally Enclosed, Non-Vent Motor / Idler Assemblies*

<u>Illus. No.</u>	<u>Part No.</u>	<u>Qty.</u>	<u>Description</u>
1	152002	2	1/4-20 Hex Nut
2	153007	2	1/4" Lock Washer
3	100225	1	1/2" Flange Bearing with Nylon Patch Setscrew
4	152014	4	1/4-20 Free Spin Wash Nut
5	116011	1	Bearing Felt Seal
6	880885	1	Impellor Cover
7	850132	1	Bearing Back-Up Plate (includes illus. nos. 7 and 8)
	852104	1	Bearing Back-Up Plate Assembly (includes illus. nos. 1, 2, 5, 7, and 8)
8	153525	2	1/4-20 x 1" Self-Clinching Stud
9	152025	1	3/4-16 Jam Nut
10	153040	1	3/4" Lock Washer
11	100608	1	12-1/2" Impellor with 3/4" Bore (for 60 Hz Models)
12	100705	1	3/16" x 3/16" x 1-3/8" Key
13	153051	1	Motor Washer
14	117600	3	Noise Suppressor Tape (sold by the foot)
15	116101	1	Felt Motor Seal Only
16	803995	1	Motor Mount Only
17	150503	1	5/16-18 x 2" Hex Head Machine Bolt
18	880205	1	1" Pillow Block Bearing
19	100800	2	1" Retaining Ring
20	100308	1	High Speed Impellor Shaft
21	100701	1	3/16" x 3/16" x 1" Key
22	101130	1	5/8" x 2-1/2" Sheave
23	100153	1	L421 GPL V-Belt
24	850159	1	Motor Mount Plate Assembly
25	100026	1	1-1/2 hp, 115 / 230v, 1 Phase, 60 Hz Motor
26	152004	4	5/16-18 Hex Nut
27	153002	4	5/16" Lock Washer
28	153001	4	5/16" Flat Washer
29	101179	1	1/2" x 4" Dia. Sheave
30	121350	1	13/32" x 3/8" Bronze Bushing
31	850131	1	Idler Arm Assembly
	801017		Idler Assembly Complete (includes illus nos. 30 through 35 and 39 through 40)
32	154277	1	5/16" x 3/8" Shoulder Bolt
33	154276	1	1/4-20 x 5/8" Shoulder Bolt
34	157010	1	1-7/8" Extension Spring
35	154275	1	3/8-16 x 3/8" Spade Bolt
36	152005	1	3/8-16 Hex Nut
37	153005	1	3/8" Lock Washer
38	152005	1	3/8-16 Hex Nut
39	150600	1	3/8-16 x 1-1/2" Hex Bolt
40	100250	1	Backside Idler Assembly
41	150501	2	5/16-18 x 3/4" Hex Head Machine Bolt
42	153002	2	5/16" Lock Washer
43	153001	2	5/16" Flat Washer
44	100173	1	12 Rib 95" Long (J) H.T. Belt

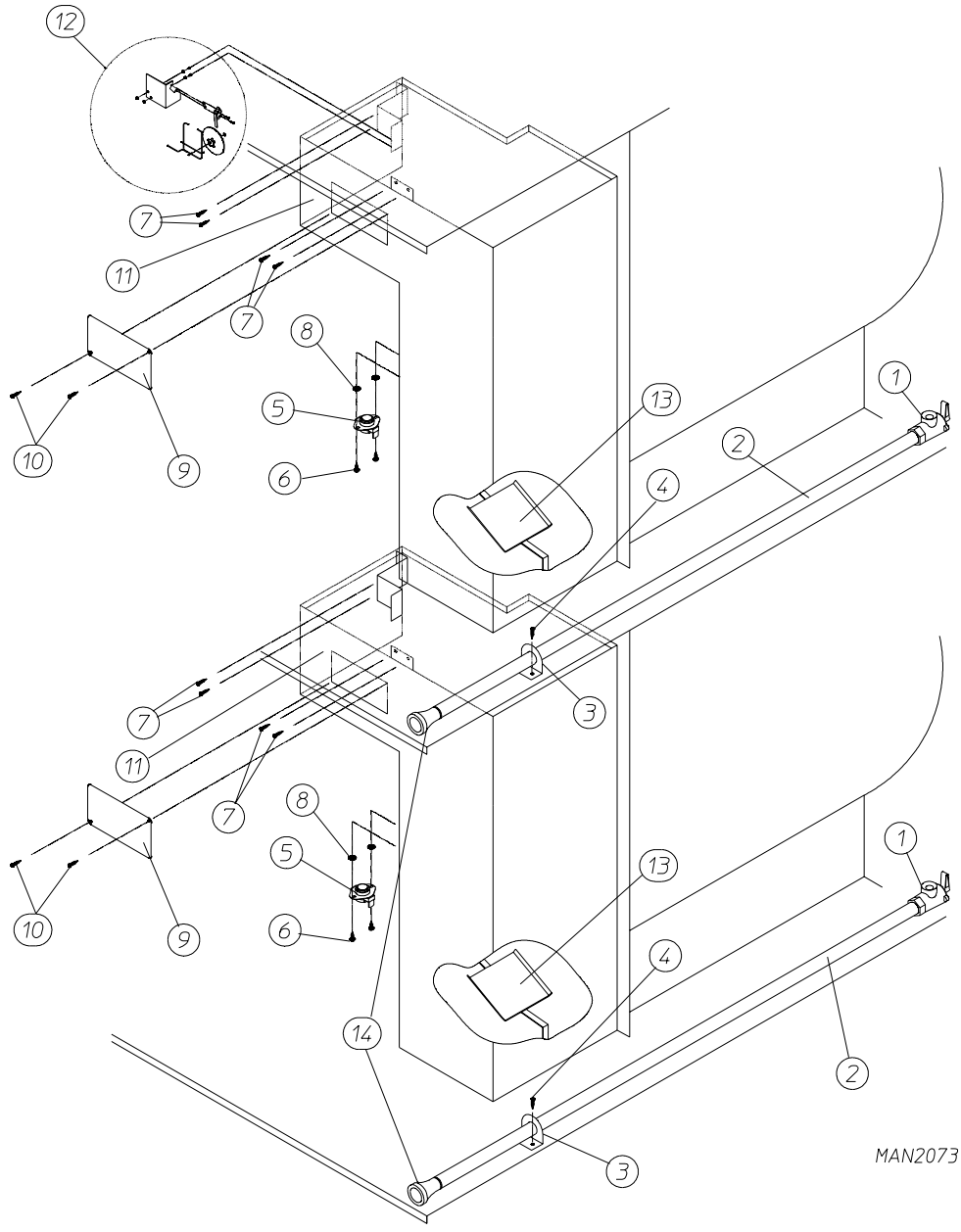
# Gas Train Valve Assembly



<u>Illus. No.</u>	<u>Part No.</u>	<u>Qty.</u>	<u>Description</u>
1	122700	2	Pin Terminal Only
2	122604	1	4-Pin Connector Only
3	881367	1	1/2" Union Shutoff with Tailpiece
5	142506	1	1/2" x 1/2" Street Elbow
6	318702	1	Gas Pipe Bracket
7	150301	2	#8-18 x 7/16" Phillips Pan Head TEK Screw
8	143259	1	Bulkhead Fitting
9	143100	1	1/4" Aluminum Tubing (sold by the foot)
10	143203	1	90° Line Adapter
11	128927	1	1/2" 24VAC Direct Spark Ignition Redundant (natural gas) Valve
	140411	1	Direct Spark Ignition Liquid Propane (gas valve) Conversion Kit
12	122701	2	Socket Terminal Only
13	122605	1	4-Pin Socket Connector Only
	122801	1	Pin / Socket Extraction Tool
14	842716	1	Gas Valve Train Ground Wiring (top gas train)
	842724	1	Gas Valve Train Ground Wiring (bottom gas train)
15	880815	1	Direct Spark Ignition Module Only
16	850808	1	Direct Spark Ignition Module Mounting Bracket Only
17	153017	4	#6 Star Washer
18	151000	4	#6-32 Pal Nut
19	153528	2	#8-32 x 1/2" Self-Clinching Stud
20	153012	2	#8 Star Washer
21	152001	2	#8-32 Hex Nut
22	318711	1	Notched Pipe Bracket
23	121060	4	5/8" Clear Flexite
24	121492	3	3/16" Nylon Clamp
25	141225	1	Single-Port Manifold Only
26	318700	1	Pipe Bracket
27	121491	3	5/8" Nylon Clamp
28	801020	1	Natural Gas – Gas Valve Train Assembly Complete Less Orifice (includes illus. nos. 3 through 36 and 38)
	319522	1	Gas Valve Train Slide Assembly
29	153528	9	#8-32 x 1/2" Self-Clinching Stud
30	153012	16	#8 Star Washer
31	318009	1	Burner Tube Bracket (PSE)
32	151001	8	#8-32 Pal Nut
33	809305	1	Direct Spark Ignition Up-Shot Burner Assembly Only
34	128917	1	Spark Electrode
35	150315	2	#6 x 3/8" Phillips
36	128918	1	Flame Sensor
37	140835*	1	#9 Burner Orifice
	140810*	1	#33 Burner Orifice
38	121300	2	Open / Closed Bushing
—	880931*	1	Liquid Propane Conversion Kit

\* Consult factory for elevations over 2,000 feet.

# Burner Box / Piping Assemblies

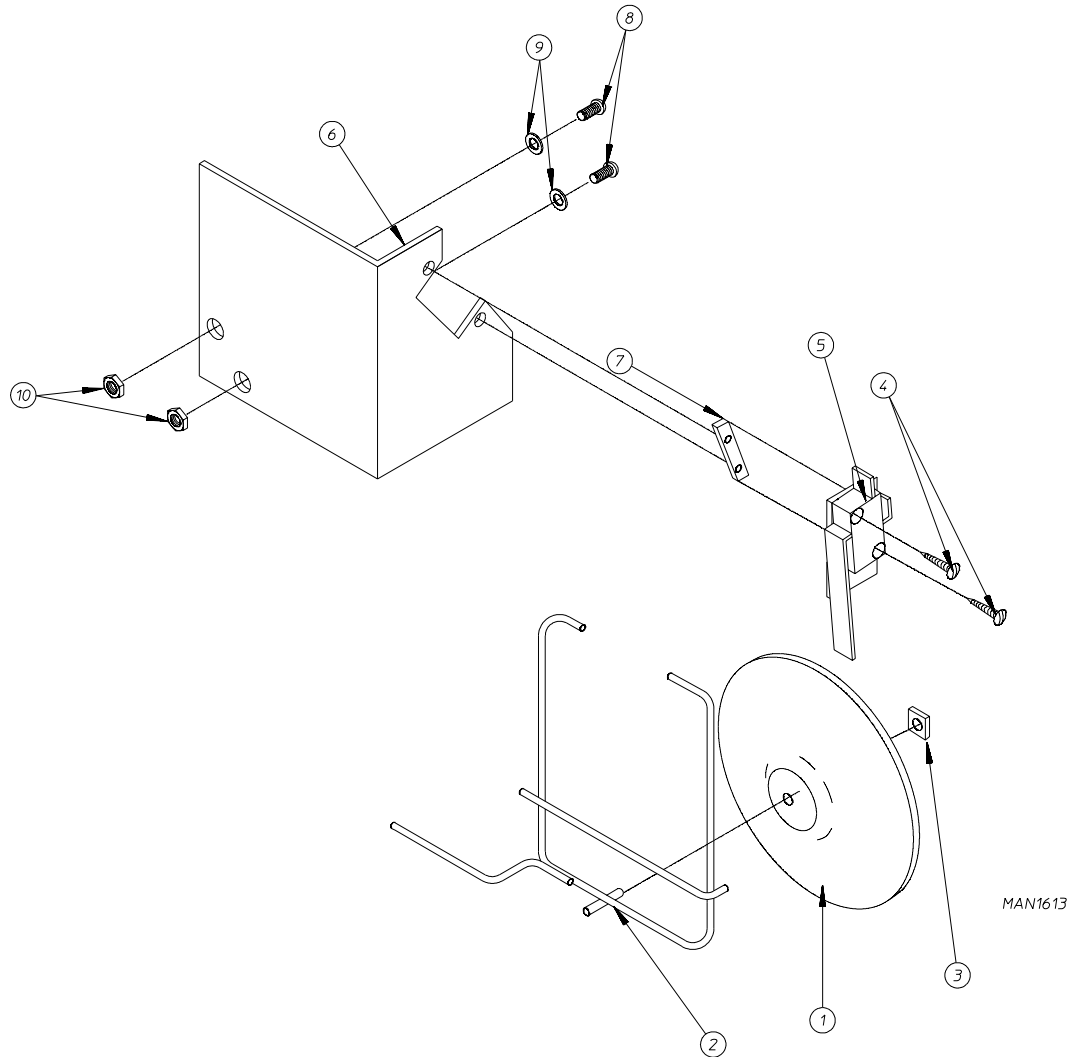


MAN2073

Illus. No.	Part No.	Qty.	Description
1	881367	1	Union Shutoff Body Only
2	142085	1	1/2" x 34" Pipe
3	318700	1	Pipe Bracket
4	150300	2	#10-32 x 1/2" Hex Washer TEK Screw
5	130401	1	330° Hi-Limit
6	150300	2	#10-32 x 1/2" Hex Washer TEK Screw
7	150301	8	#8-18 x 7/16" Phillips Pan Head TEK Screw
8	153002	2	5/16" Split Lock Washer Plated
9	318065	2	Burner Box Clean Out Cover
10	150300	4	#10-32 x 1/2" Hex Washer TEK Screw
11	881127	2	Burner Box without Flame Spreader
12	—	—	Sail Switch Assembly (refer to <b>Sail Switch Assembly on page 33</b> )
13	881125	2	Flame Spreader



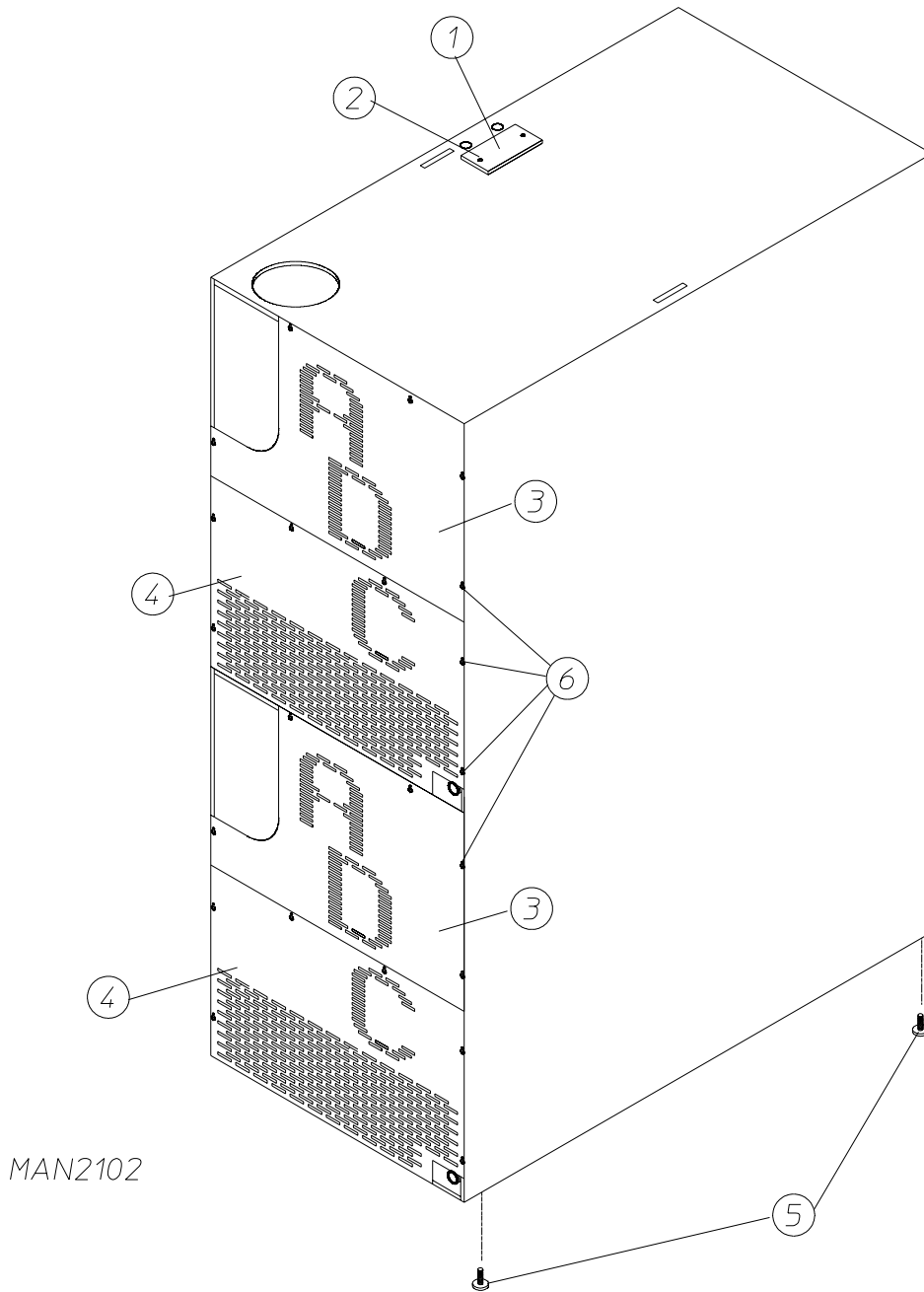
## SAIL SWITCH ASSEMBLY



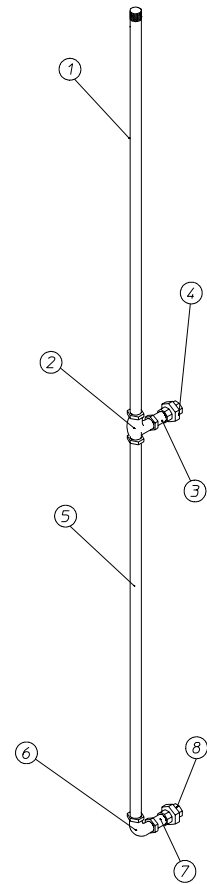
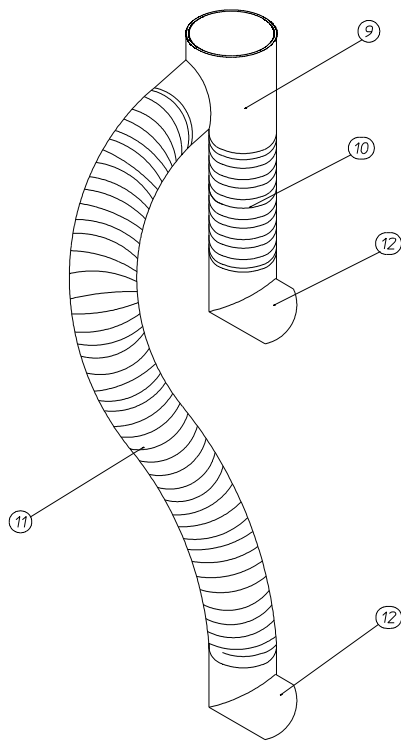
*NOTE: DUPLICATE ALL COMPONENTS  
FOR LOWER SAIL SWITCH ASSEMBLY*

<u>Illus. No.</u>	<u>Part No.</u>	<u>Qty.</u>	<u>Description</u>
1	319206	1	Sail Switch Damper (embossed)
	802805	1	Sail Switch Rod and Damper Assembly (includes illus. nos. 1 through 3)
2	105550	1	Sail Switch Rod
3	154002	1	1/8" Push-On Fastener
4	150303	2	#4 x 3/4" Pan Head "A" Machine Screw
5	122200	1	Sail Switch
	802807	1	Sail Switch Bracket Assembly (includes illus. nos. 4 through 7)
6	319208	1	Sail Switch Bracket
7	154004	1	Twin Speed Nut
8	150001	2	#6-32 x 1/2" Round Head Machine Screw
9	153010	2	#6 Star Washer
10	152000	2	#6-32 Hex Nut

# Back Guard Assembly



<u>Illus. No.</u>	<u>Part No.</u>	<u>Qty.</u>	<u>Description</u>
1	315014	1	Top Electric Box Cover Plate
2	150301	2	#8-18 x 7/16" Phillips Pan Head TEK Screw
3	314404	1	Top and Bottom Upper Guard
4	314405	1	Top and Bottom Lower Guard
5	103500	4	Adjustable Leveling Leg
6	150301	22	#8-18 x 7/16" Phillips Pan Head TEK Screw



MAN1616

## Optional Gas Piping Kit

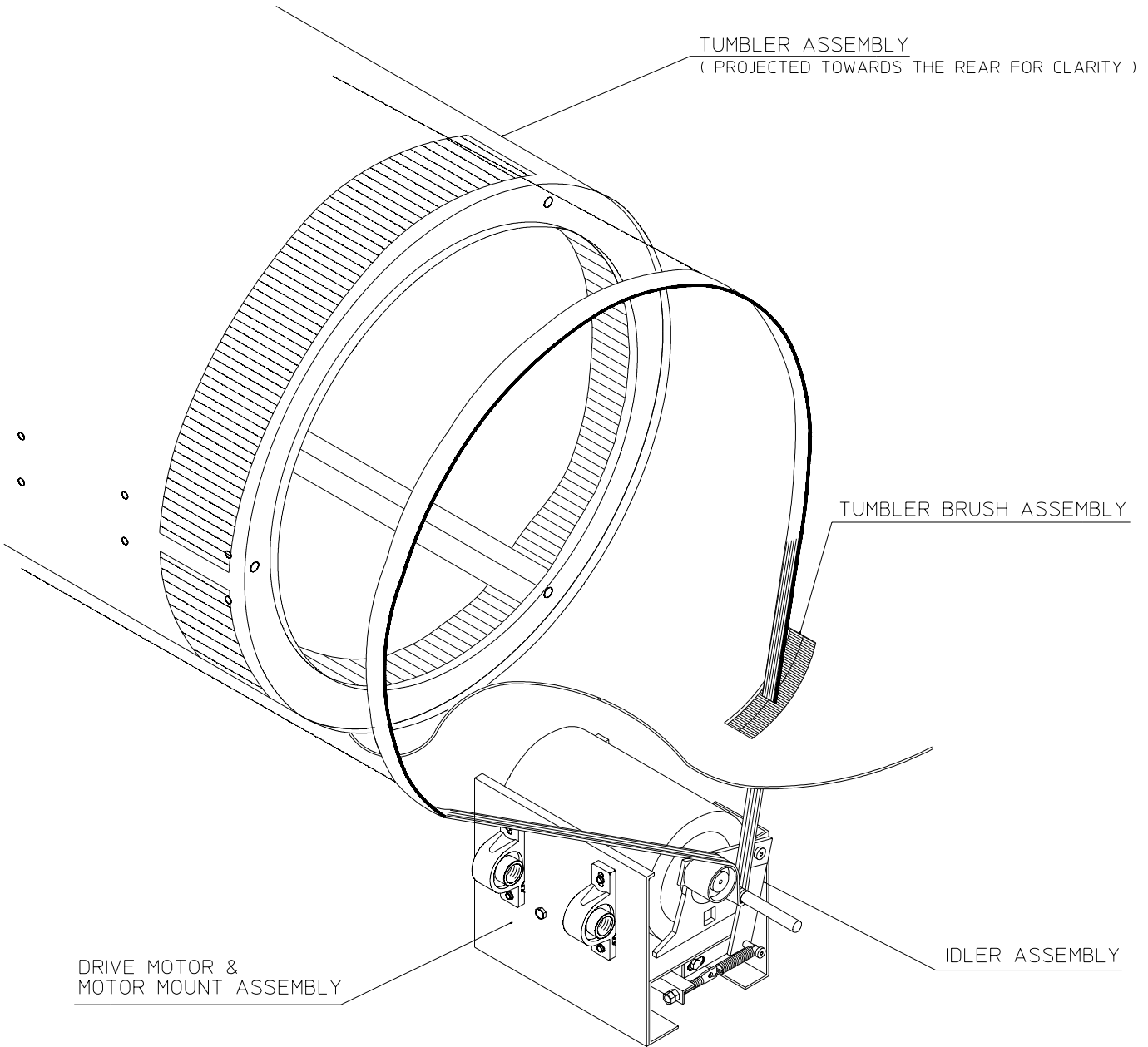
Illus. No.	Part No.	Qty.	Description
—	880128	1	Gas Piping Kit (includes illus. nos. 1 through 8)
1	142821	1	3/4" x 36" Pipe
2	142505	1	3/4" x 1/2" x 1/2" Tee
3	142814	1	1/2" x 2-1/2" Nipple
4	142600	1	1/2" Union
5	142824	1	1/2" x 37-1/4" Pipe
6	142500	1	1/2" x 90° Elbow
7	142814	1	1/2" x 2-1/2" Nipple
8	142600	1	1/2" Union

## Optional Exhaust Ducting Kit

Illus. No.	Part No.	Qty.	Description
—	880127	1	Exhaust Ducting Kit (includes illus. nos. 9 through 12)
9	143535	1	8" x 6" x 6" Wye Branch Duct
10	143519	1	6" Round x 4' Long Flexible Exhaust Duct
11	143509	1	6" Round x 8' Long Flexible Exhaust Duct
12	143536	2	6" Round x 45° Elbow
—	150300*	12	#10-32 x 1/2" Hex Washer TEK Screw
—	117505*	12	Aluminum Duct Tape (sold by the foot)

\* Included with exhaust ducting kit (P/N: 880127).

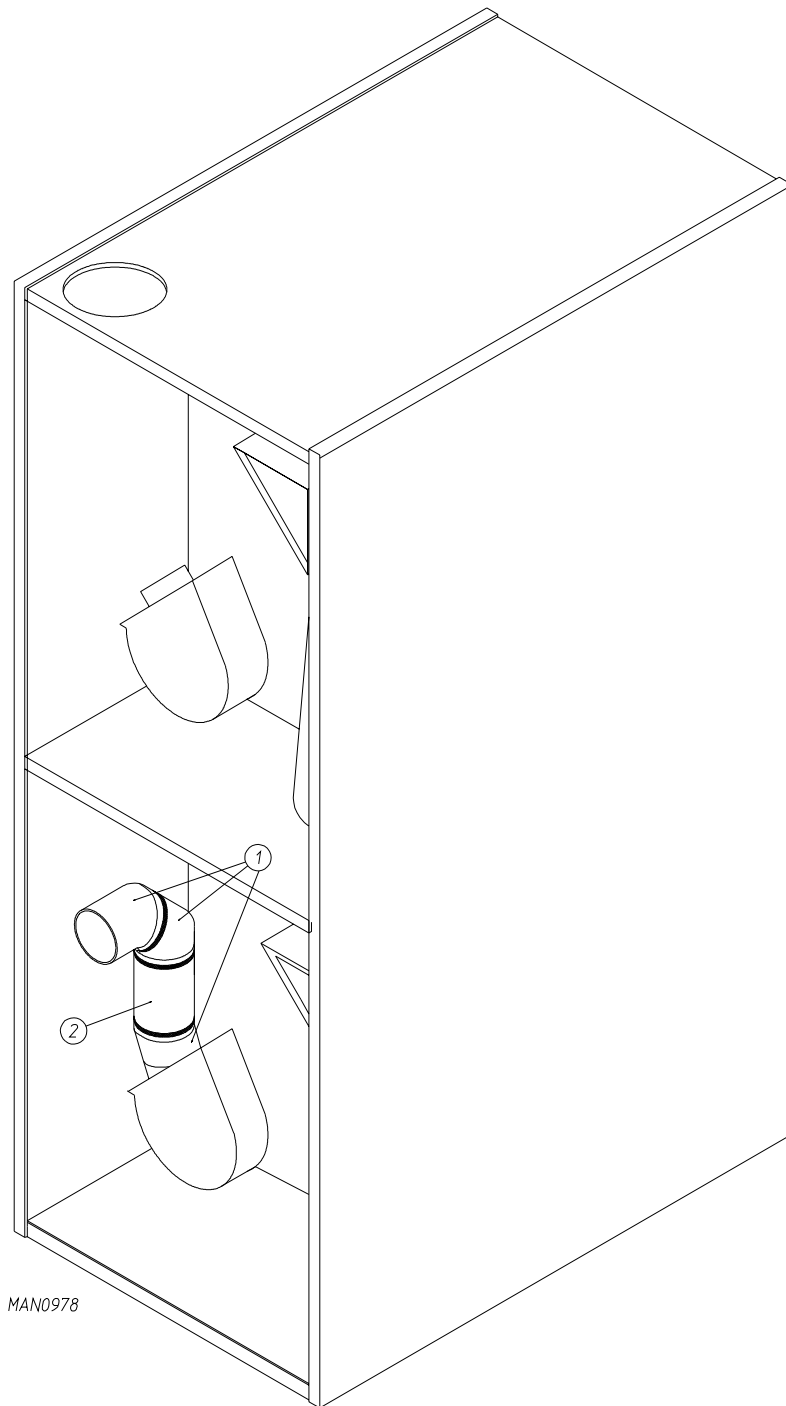
# 12-Rib 95" (J) Poly Belt Arrangement



MAN2071

# Bottom Exhaust Duct Assembly

NOTE: Duplicate all components for top tumbler.



Illus. No.	Part No.	Qty.	Description
1	143536	3	6" Round x 45° Elbow
2	143545	1	6" Round x 6" Long Duct
-	117505*	5	Aluminum Duct Tape (sold by the foot)

\* Tape all joints.

## *Additional Parts Available*

---

<u>Part No.</u>	<u>Description</u>
112027	"Water Washed Fabrics" Label
112039	"Black / White / Green Ground" Label
112040	"Lint Compartment" Label
112041	"Caution – Exhausted" Label
112530	"Program Location Summary" Coin Label
120100	3/8" Straight (BX) Connector
120300	3/8" x 45° (BX) Connector
120400	3/8" Red Jacket (BX) Insulator
120500	3/8" Jiffy Clip (BX Retainer Clip)
120600	3/8" Greenfield (BX)
120800	1/4" In-Line Connector
120802	Red Butt Connector
120903	#74B Wire Nut
121014	Crimp-On Wire Nut
121499	5-1/2" Harness Tie
121500	8" Harness Tie
121503	Harness Tie Mounting Clip
122804	Water Column Test Gauge



