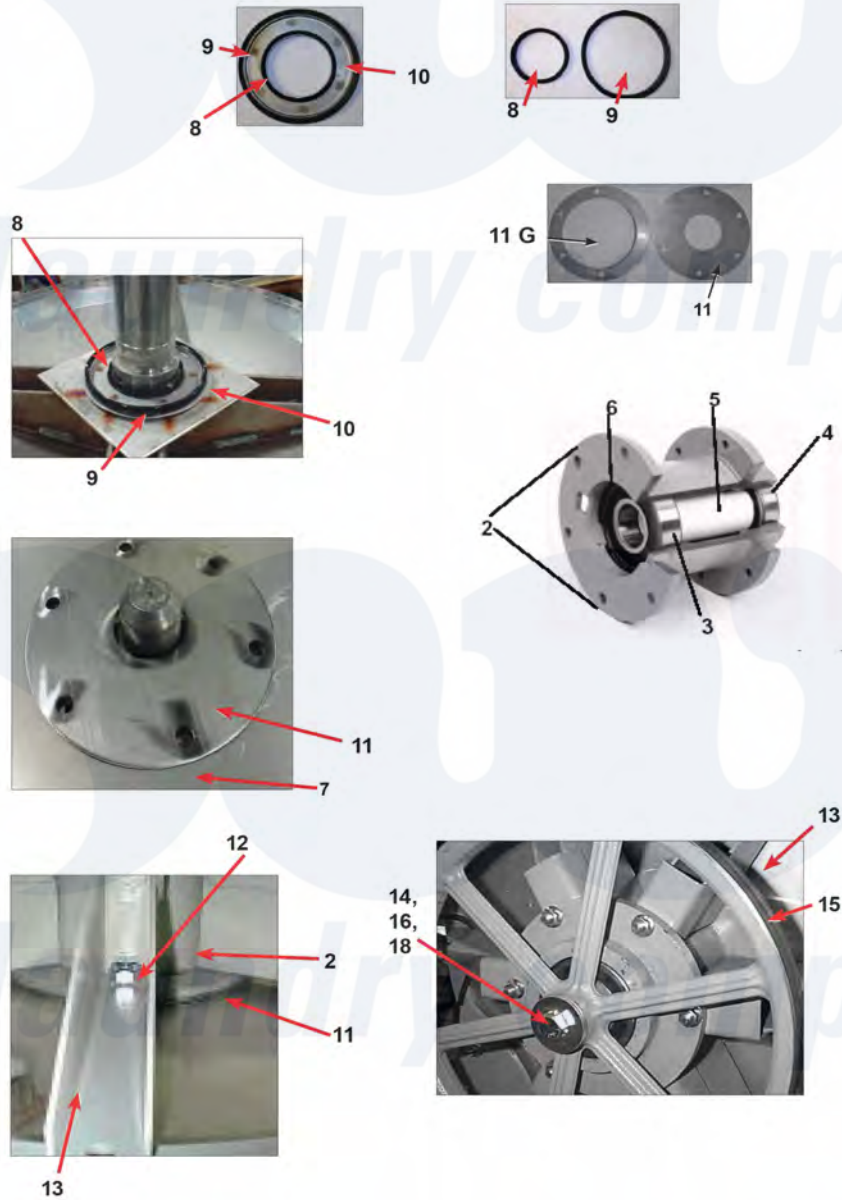


Dexter SWD WSAD Cylinder, Seals & Bearings



Dexter [Commercial Dexter SWD Stacked Washer and Dryer Parts](#) Parts Diagram WSAD Cylinder, Seals & Bearings
 Click on the part number to view part

Item	Original Part Number	Replaced By	Status	Part Description
*	9803-186-001			Housing, Bearing- Assembly (items #2-#6)
2	9241-180-002			Housing, Bearing
3	9036-159-005			Bearing, Front (LARGE)
4	9036-159-004			Bearing, Rear (SMALL)
5	9538-167-001			Spacer, Bearing
6	9487-238-003			Ring, Bearing Retainer
8	9532-140-002			Seal, Primary
9	9532-140-006			Seal, Secondary
10	9950-048-001			Ring, Seal Mounting
11	9487-261-003			Tub Back Mating Ring
12	9545-060-001			Screw 5/8-11x1/1/2Ó

"	8640-425-001		Nut, Hex 5/8-11
13	9991-056-002		Support Arm Assy, Bearing Housing
14	9545-059-003		Screw, 7/16-14x1 1/2
*	8640-416-005		Nut, Flange Lock
15	9453-168-003		Pulley, Driven
16	9487-234-003		Tolerance Ring
17	8641-581-032		Washer, Flat 5/8x2 1/4
18	9545-060-001		Screw 5/8-11x1 1/2
19	8641-582-018		Lockwasher
*	9848-120-001		Cylinder Assy
"	9869-011-002	Not Available	Tub and Cylinder Assy.
"	9456-041-007		Plastic Plug 1 1/2-(inside cylinder)

