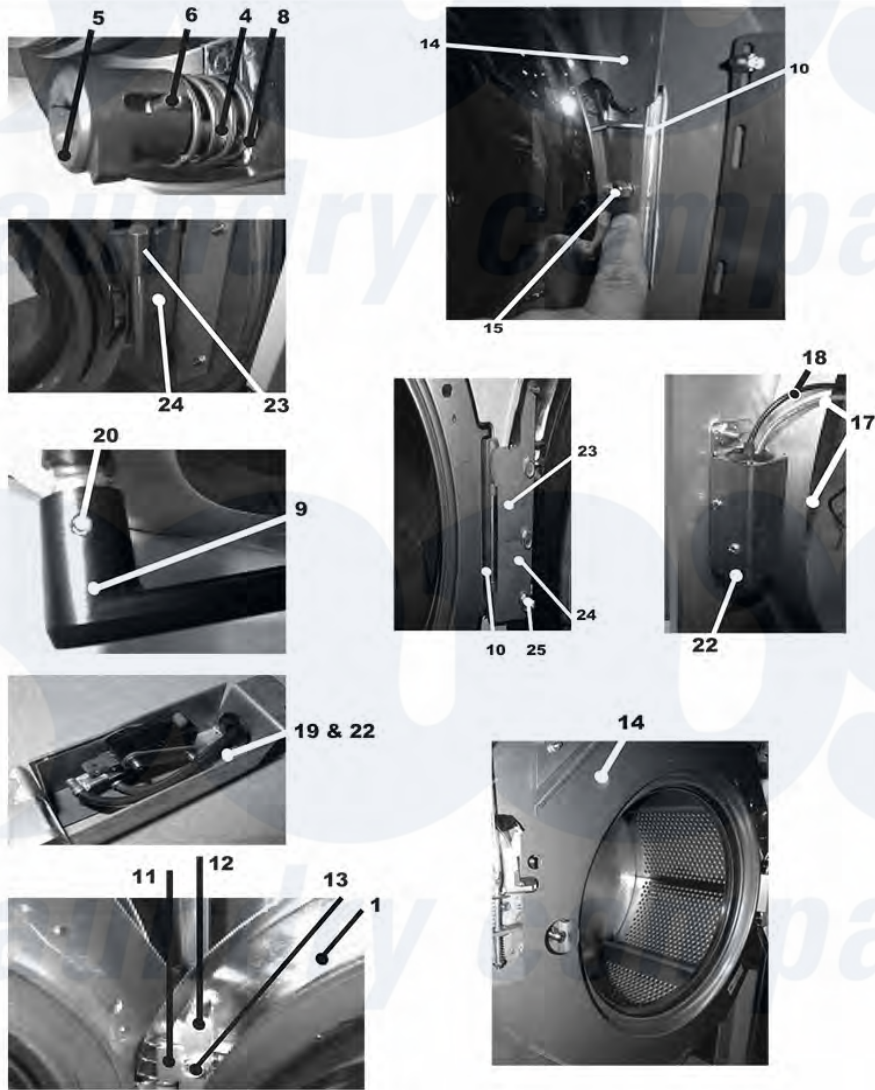


Dexter WCAD18KCS-10 (T-300) Loading Door

Parts Data



106

Dexter Commercial Dexter WCAD18KCS-10 (T-300) Washer Parts Parts Diagram Loading Door
 Click on the part number to view part

Item	Original Part Number	Replaced By	Status	Part Description
--	9960-273-001	9960-273-001P		18# Door Assy.
1	9487-264-001			Loading Door, Ring
2	9206-411-002			Gasket, Loading Door
3	9635-018-001			Window, Loading Door
--	9913-134-003	9913-134-003P		Shaft assy.
4	9537-195-002			Shaft, Door Locking
5	9095-040-002			Cam, Locking
6	9451-181-005			Pin, Groove (1 1/4)
7	9451-181-004			Pin, Dowel
8	9534-360-002			Spring, Lock Cam
9	9244-080-003			Handle, Door

10	9243-079-001	9955-029-002	Door Hinge Assembly Mounts to Tub Front
20	9451-181-006		Pin, Door Handle (groove)
21	9545-014-009		Screw, Hinge Mtg 5/16" x 3/4"
--	8641-582-009		Lockwasher, Circuit Board
"	9552-036-001		Shim, Loading Door Hinge, Thin
11	9451-184-004	9781-001-001	Loading Door Hinge Pin
--	8649-031-000		Ring, Retaining (snap ring ext)
12	9938-040-001		Loading Door Hinge Clamp (mounts to door ring)
13	9545-056-001		Screw, Loading Door Mtg (5/16" TF)
14	9950-059-001		Masking Assembly
--	9059-063-004	9059-063-004P	Edge protector 18
"	8640-413-002		Nut, Hinge to Door
15	9539-461-007		Switch-Micro
16	9550-159-001		Shield, Door Switch
--	9627-791-003		Wiring Harness doorlock safety switch
17	8220-062-027		Wires Red
18	8220-062-028		Wires Black
19	9801-089-001		Switch Assembly Complete Door Closure
22	9041-087-001	Not Available	Switch Box
--	9053-067-003		Bushing Insulating
"	8640-401-001		Nut, Special Twin
"	9545-020-001		Screw, Switch Mtg
"	9008-004-001		Actuator, Switch- Lower