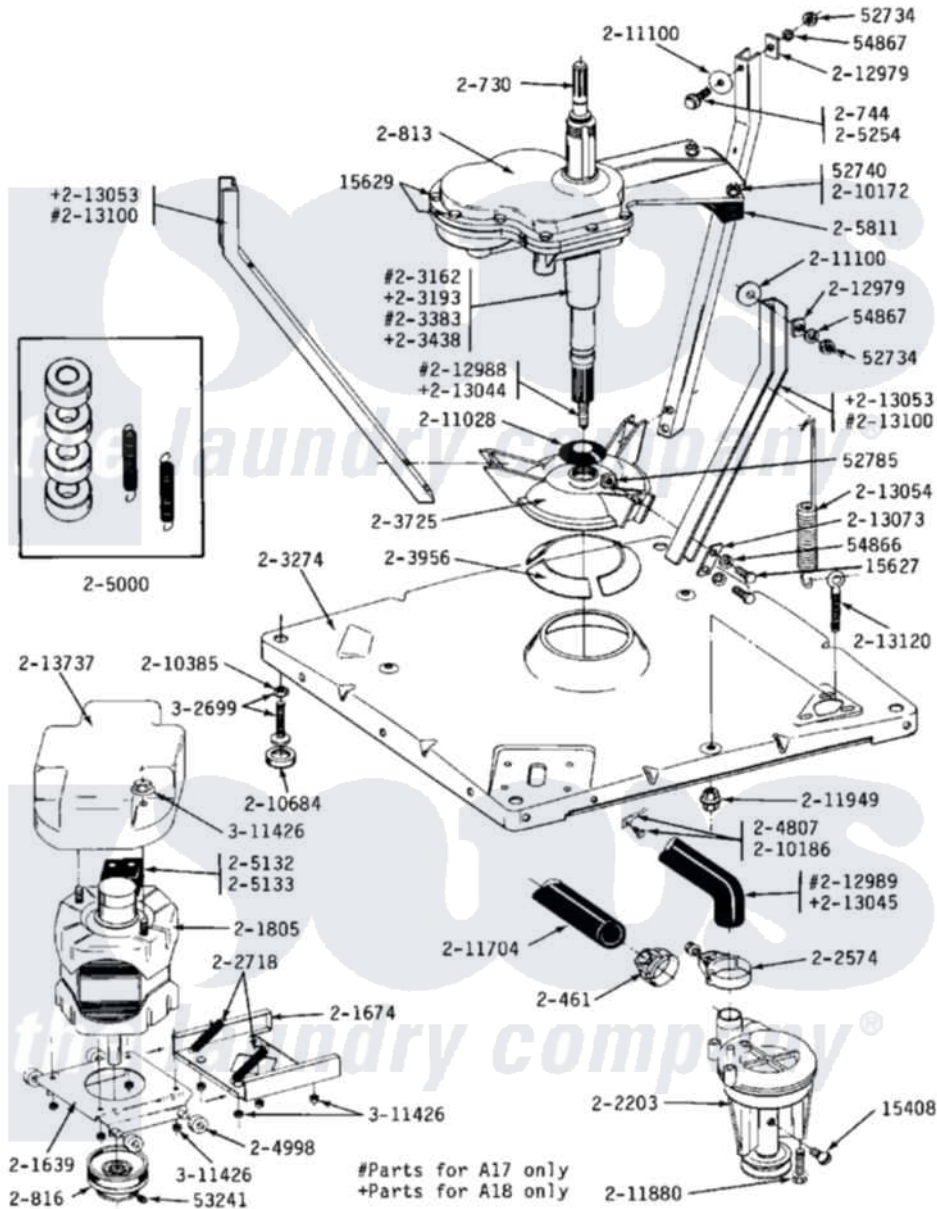


Maytag A18CM 08 - BASE, PUMP, MOTOR & COMPONENTS



Maytag Commercial Maytag A18CM Washer Parts Parts Diagram 08 - BASE, PUMP, MOTOR & COMPONENTS
 Click on the part number to view part

Item	Original Part Number	Replaced By	Status	Part Description
001	Y015408	22003235		Screw, Bearing Insert
002	Y015627			Screw- Hex
003	Y015629			Bolt, Grinding Chamber
004	Y052734			Nut, Carrage Bolts And Bracket
005	Y052740	62739		Nut, Lock
006	Y052785			Nut, Brace To Damper
007	Y053241			Set Screw, Motor Pulley
008	Y054866	486009		Lockwasher
009	Y054867			Washer, Lock
010	Y059141			Ctn. 50 Ft. 31/32 Drain Hose
011	200461	285655		Clamp, Hose
012	200730	22002124		Shaft- Agi
013	200744	W10175939		Bolt
014	NLA		Not Available	GEAR CASE COVER ASSEMBLY
015	200816	6-2008160		Pulley- MO

016	201639		Upper Motor Mount
017	201674	Not Available	LOWER MOTOR MOUNT--- NA
018	201805	12002351	Motor-Drve
019	202203	6-2022030	Pump As Pa
020	202574	3367052	Clamp, Hose
021	202718		Springs, Tension
022	NLA	Not Available	GEAR HOUSING W/STUDS & TUBE
023	203274		Base With Damper Pads
024	203438	W10172457	Transmison
025	203725		Damper W/Bolt And Clip
026	203956		Damper Pad Kit
027	204807		Ground Wire, Supp. Plte To Top Cover
028	Y204998	205000	Roller And Spring Kit 4+Spr
029	205000		Roller And Spring Kit 4+Spr
030	205132	Not Available	SWITCH, MOTOR EXTERNAL START No.201664-14,205463- 4 & 201800-4
031	NLA	Not Available	MOTOR EXTERNAL START SWITCH
032	205254	W10175938	Bolt
033	NLA	Not Available	COUNTERWEIGHT
034	NLA	Not Available	LOCK WASHER
035	210186	3370225	Screw
036	210385		Lock Nut For Adjustable Leg
037	210684		Foot, Adjustable Leg
038	211028	22001586	Deflector, Water
039	211100		Washer, Outer Tub
040	211704		Hose, Drain
041	211880		Screw, HeX Head No.10 X 1/2 Inc
042	211949		Nut, Adjustment Eyebolt
043	212979	Not Available	WASHER, TUB BRACE
044	213044		Shaft, Center
045	213045		Hose, Outer Tub Part Not Used
046	213053		Brace, Tub Part Not Used
047	213054		Centering Spring - 3 Used
048	213073		Washer, Double Brace
049	213120	216416	Bolt, Eye/Centering Spring
050	213737		Shield, Motor
051	Y302699	22003428	Leg, Adjustable
052	Y311426	3400029	Nut, Adapter Plate