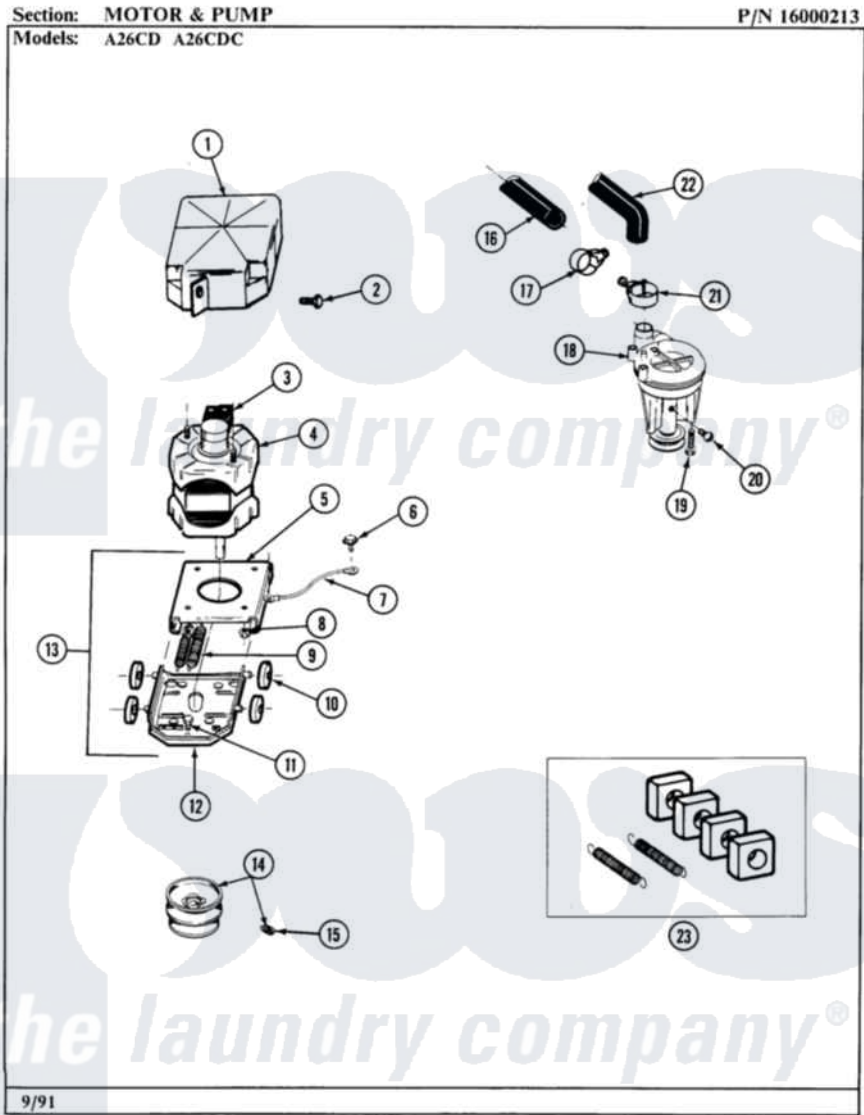


Maytag A26CDC 10 - MOTOR & PUMP



20

Maytag [Commercial Maytag A26CDC Washer Parts](#) Parts Diagram 10 - MOTOR & PUMP
Click on the part number to view part

Item	Original Part Number	Replaced By	Status	Part Description
001	215098			Shield, Motor
002	213121	3400111		Screw, 12-14 X 5/8
003	205132		Not Available	SWITCH, MOTOR EXTERNAL START No.201664-14,205463-4 & 201800-4
"	205133		Not Available	(PROD. IDNo. 2-1664-8 & 2-5463)
"	206505		Not Available	PROD. No.201664-15, & No.205463-3.
"	NLA		Not Available	SWITCH, MOTOR START PROD. NO.
004	201805	12002351		Motor-Drve
005	214956			Motor Mount Assembly
006	210186	3370225		Screw
007	901220			Ground Wire
008	Y311426	3400029		Nut, Adapter Plate
009	202718			Springs, Tension
010	Y204998	205000		Roller And Spring Kit 4+Spr

011	Y313561		Screw---NA
012	205908		Motor Mount Assembly
013	205999		Motor Mount Assembly
014	200816	6-2008160	Pulley- MO
015	Y053241		Set Screw, Motor Pulley
016	215057	211704	Hose, Drain
017	200461	285655	Clamp, Hose
018	202203	6-2022030	Pump As Pa
019	211880		Screw, HeX Head No.10 X 1/2 Inc
020	Y015408	22003235	Screw, Bearing Insert
021	202574	3367052	Clamp, Hose
022	213045		Hose, Outer Tub Part Not Used
023	205000		Roller And Spring Kit 4+Spr

