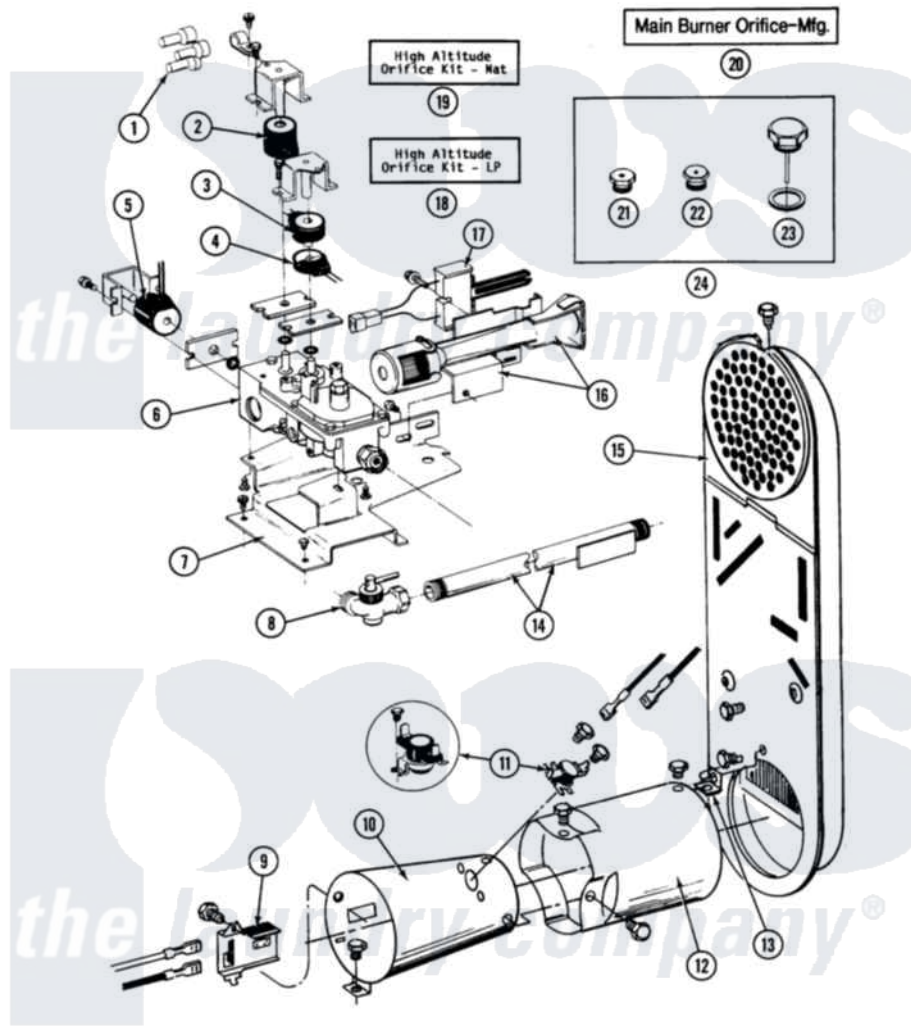


# Maytag DG26CT 08 - INLET DUCT, GAS VALVE & COMBUSTION CONE

SECTION: INLET DUCT, GAS VALVE & COMBUSTION CONE  
 MODEL: DE-D626CA-CD-CT



Issue Date: 11/90

30

Maytag [Commercial Maytag DG26CT Dryer Parts](#) Parts Diagram 08 - INLET DUCT, GAS VALVE & COMBUSTION CONE

[Click on the part number to view part](#)

Item	Original Part Number	Replaced By	Status	Part Description
001	311546	<a href="#">911445</a>		Wire Connector
002	<a href="#">305603</a>			Secondary Coil
003	<a href="#">305604</a>			Holding Coil
004	<a href="#">305605</a>			Booster Coil
005	<a href="#">Y304626</a>			Side Coil
006	NLA		Not Available	SCREW, HEX HD No.8 X 3/8 INCH
"	Y303777	<a href="#">W10116794</a>		Gas Valve
007	<a href="#">312929</a>			Gas Valve Bracket
"	<a href="#">Y313561</a>			Screw---NA
"	Y310632	<a href="#">1163839</a>		Screw
008	<a href="#">Y303349</a>			Angle Shut-Off, Gas Valve
009	<a href="#">211294</a>	<a href="#">90767</a>		Screw, 8A X 3/8 HeX Washer Head Tapping
"	Y303377	<a href="#">338906</a>		Radiant, Sensor
010	<a href="#">211294</a>	<a href="#">90767</a>		Screw, 8A X 3/8 HeX Washer Head Tapping

"	<a href="#">Y303368</a>		Cone, Combustion
"	<a href="#">Y308548</a>		Combustion Cone Assembly
011	<a href="#">211294</a>	<a href="#">90767</a>	Screw, 8A X 3/8 HeX Washer Head Tapping
"	<a href="#">305169</a>		Thermostat, Hi-Limit Gas
012	<a href="#">Y303841</a>		Cone, Extension
013	<a href="#">211294</a>	<a href="#">90767</a>	Screw, 8A X 3/8 HeX Washer Head Tapping
"	<a href="#">Y312890</a>		Retainer, Heater Chamber
014	Y303383	<a href="#">33001735</a>	Pipe And Bracket Assembly Series 18 Not Needed Use Vavle
015	<a href="#">211294</a>	<a href="#">90767</a>	Screw, 8A X 3/8 HeX Washer Head Tapping
"	<a href="#">307119</a>		Duct, Inlet Assembly
016	304974	<a href="#">33002793</a>	Burner Assembly
"	Y310632	<a href="#">1163839</a>	Screw
017	304970	<a href="#">4391996</a>	Ignitor
"	<a href="#">304971</a>		Screw Note: Screw, Igniter
018	NLA	Not Available	ORIFICE KIT, LP (HIGH ALT.)
019	NLA	Not Available	ORIFICE KIT, NAT (HIGH ALT.)
020	NLA	Not Available	MAIN BURNER ORIFICE (MFG)
021	NLA	Not Available	MAIN BURNER ORIFICE (LP)
022	NLA	Not Available	INTERNAL ORIFICE (LP)
023	NLA	Not Available	SCREW ASSY - BLUE BLOCK OPE
024	<a href="#">Y303779</a>		Conversion Kit

*the laundry company*<sup>®</sup>

*the laundry company*<sup>®</sup>