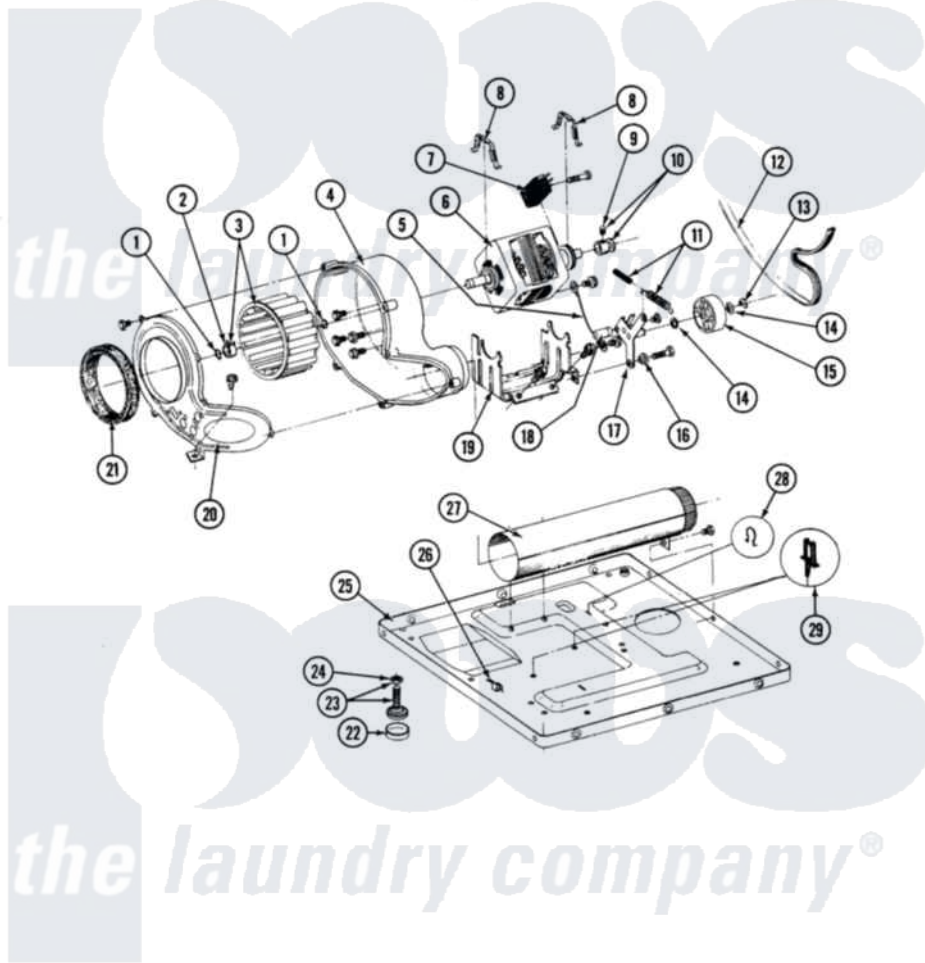


Maytag GDE26CA 07 - MOTOR, BLOWER & BASE FRAME

SECTION: MOTOR, BLOWER & BASE FRAME
 MODEL: DE-DG26CA-CD-CT



Issue Date: 11/90

32

Maytag [Commercial Maytag GDE26CA Dryer Parts](#) Parts Diagram 07 - MOTOR, BLOWER & BASE FRAME
 Click on the part number to view part

Item	Original Part Number	Replaced By	Status	Part Description
001	410233	9703438		Ring-Retrn
002	312967			Clamp, Blower Housing
003	Y303836			Blower Wheel Assembly And Clamp
004	Y312893			Housing, Blower
005	901220			Ground Wire
"	910343	488234		Screw 8-32 X 1/4
006	Y303358	W10410999		Motor-Drve
007	NLA		Not Available	SWITCH, MOTOR START-PROD.
"	Y303877		Not Available	SWITCH, MOTOR EXTERNAL START No.303358-2, No.303358-4, 303358-7
"	Y303879			Switch, Motor External Start
008	Y015825			Clip, Motor To Motor Support
009	Y053241			Set Screw, Motor Pulley
010	Y305185	6-3051850		Pulley- MO
011	Y303045			IDLER SPRING ASSY.

011	1303943		W/PLUG
012	Y312959		Poly "V" Belt For Tumbler
013	312958	354987	Ring, Retaining
014	Y312527		Washer, Idler Shaft
015	Y303705	6-3037050	Pulley- ID
016	Y312894	315772	Sleeve, Idler Arm
017	Y014874		Screw, Idler Arm And Sleeve
"	Y303363	6-3033630	Idler Arm
"	Y312961	W10116751	Screw
018	Y313582	W10116756	Spacer
019	Y313561		Screw----NA
"	NLA	Not Available	SUPPORT, MOTOR
020	Y313561		Screw----NA
"	314778	Not Available	COVER, BLOWER HOUSING
021	Y312901		Seal, Housing Cover
022	210684		Foot, Adjustable Leg
023	Y302699	22003428	Leg, Adjustable
024	210385		Lock Nut For Adjustable Leg
025	Y303361	Not Available	BASE ASSY. (UPPER & LOWER)
026	Y310376		Clip, Door Switch Harness
027	Y303442		EXHAUST DUCT ASSEMBLY
028	410490		Spring, Retainer Wire Harness
029	Y313262	W10116752	Retainer-

the laundry company[®]

the laundry company[®]