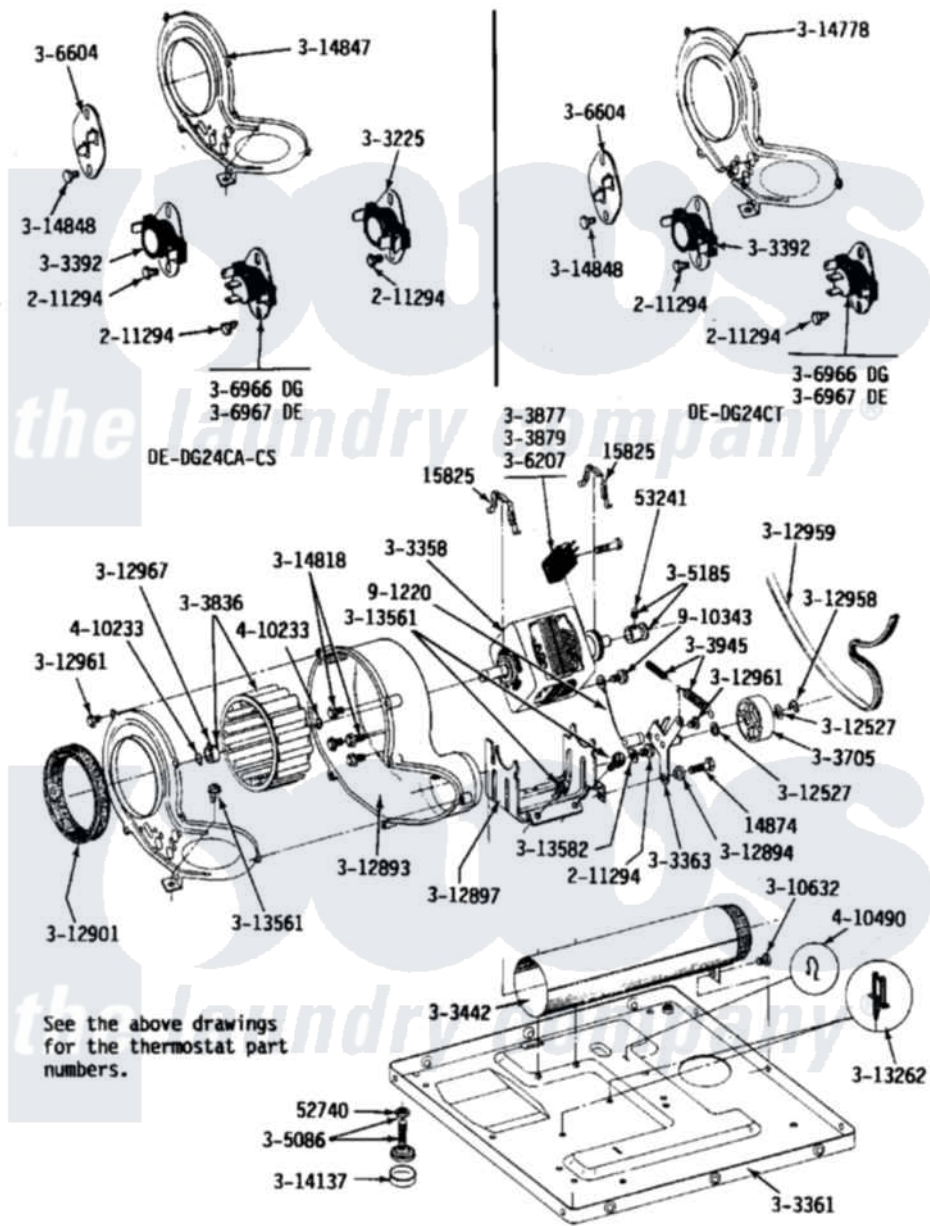


Maytag LDE24CT 09 - MOTOR, BLOWER, BASE FRAME & THERMOSTATS



Maytag [Commercial Maytag LDE24CT Dryer Parts](#) Parts Diagram 09 - MOTOR, BLOWER, BASE FRAME & THERMOSTATS

[Click on the part number to view part](#)

Item	Original Part Number	Replaced By	Status	Part Description
001	Y014874			Screw, Idler Arm And Sleeve
002	Y015825			Clip, Motor To Motor Support
003	Y052740	62739		Nut, Lock
004	Y053241			Set Screw, Motor Pulley
005	211294	90767		Screw, 8A X 3/8 HeX Washer Head Tapping
006	Y303225			Thermostat, Permanent Press
007	Y303358	W10410999		Motor-Drive
008	Y303361		Not Available	BASE ASSY. (UPPER & LOWER)
009	Y303363	6-3033630		Idler Arm
010	303392			Thermostat, Cycling
011	Y303442			EXHAUST DUCT ASSEMBLY
012	Y303705	6-3037050		Pulley- ID
013	Y303836			Blower Wheel Assembly And Clamp

014	Y303877		Not Available	SWITCH, MOTOR EXTERNAL START No.303358-2, No.303358-4, 303358-7
015	Y303879			Switch, Motor External Start
016	Y303945			IDLER SPRING ASSY. W/PLUG
017	Y305086			Adjustable Leg And Nut
018	Y305185	6-3051850		Pulley- MO
019	NLA		Not Available	SWITCH, MOTOR START- PROD.
020	NLA		Not Available	WIRE
021	306604			Cut-Off, Thermal Part Not Used
022	306966			Thermostat, Multi-Temp Part Not Used Mdg26ct-MN Only
023	306967			Thermostat, Multi-Temp Part Not Used Mde26ct-MN Only
024	Y310632	1163839		Screw
025	Y312527			Washer, Idler Shaft
026	Y312893			Housing, Blower
027	Y312894	315772		Sleeve, Idler Arm
028	NLA		Not Available	SUPPORT, MOTOR
029	Y312901			Seal, Housing Cover
030	312958	354987		Ring, Retaining
031	Y312959			Poly "V" Belt For Tumbler
032	Y312961	W10116751		Screw
033	312967			Clamp, Blower Housing
034	Y313262	W10116752		Retainer-
035	Y313561			Screw----NA
036	Y313582	W10116756		Spacer
037	Y314137			Foot, Rubber
038	314778		Not Available	COVER, BLOWER HOUSING
039	314818	1163839		Screw
040	314847			COVER, BLOWER HOUSING
041	NLA		Not Available	SCREW
042	410233	9703438		Ring-Retrn
043	410490			Spring, Retainer Wire Harness
044	901220			Ground Wire
045	910343	488234		Screw 8-32 X 1/4

