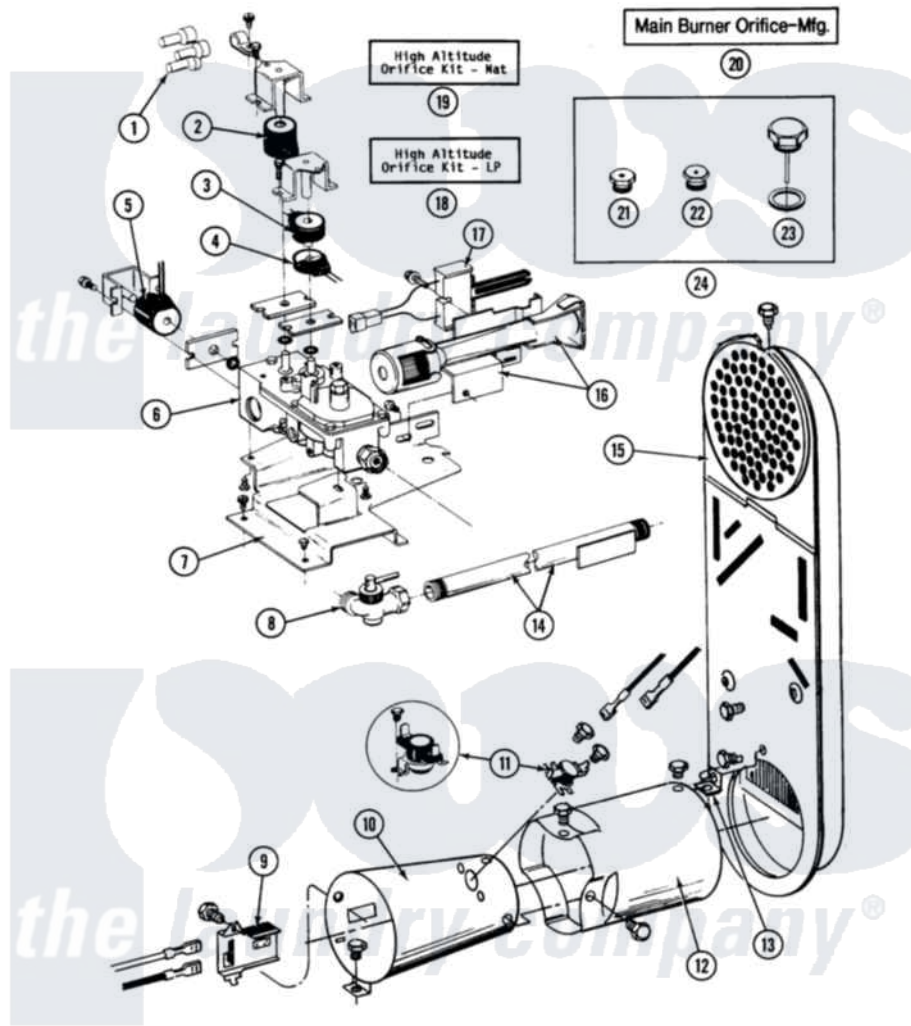


Maytag LDG26CA 06 - INLET DUCT, GAS VALVE & COMBUSTION CONE

SECTION: INLET DUCT, GAS VALVE & COMBUSTION CONE
 MODEL: DE-D626CA-CD-CT



Issue Date: 11/90

30

Maytag Commercial Maytag LDG26CA Dryer Parts Diagram 06 - INLET DUCT, GAS VALVE & COMBUSTION CONE

[Click on the part number to view part](#)

Item	Original Part Number	Replaced By	Status	Part Description
001	311546	911445		Wire Connector
002	305603			Secondary Coil
003	305604			Holding Coil
004	305605			Booster Coil
005	Y304626			Side Coil
006	NLA		Not Available	SCREW, HEX HD No.8 X 3/8 INCH
"	Y303777	W10116794		Gas Valve
007	312929			Gas Valve Bracket
"	Y313561			Screw---NA
"	Y310632	1163839		Screw
008	Y303349			Angle Shut-Off, Gas Valve
009	211294	90767		Screw, 8A X 3/8 HeX Washer Head Tapping
"	Y303377	338906		Radiant, Sensor
010	211294	90767		Screw, 8A X 3/8 HeX Washer Head Tapping

"	Y303368		Cone, Combustion
"	Y308548		Combustion Cone Assembly
011	211294	90767	Screw, 8A X 3/8 HeX Washer Head Tapping
"	305169		Thermostat, Hi-Limit Gas
012	Y303841		Cone, Extension
013	211294	90767	Screw, 8A X 3/8 HeX Washer Head Tapping
"	Y312890		Retainer, Heater Chamber
014	Y303383	33001735	Pipe And Bracket Assembly Series 18 Not Needed Use Vavle
015	211294	90767	Screw, 8A X 3/8 HeX Washer Head Tapping
"	307119		Duct, Inlet Assembly
016	304974	33002793	Burner Assembly
"	Y310632	1163839	Screw
017	304970	4391996	Ignitor
"	304971		Screw Note: Screw, Igniter
018	NLA	Not Available	ORIFICE KIT, LP (HIGH ALT.)
019	NLA	Not Available	ORIFICE KIT, NAT (HIGH ALT.)
020	NLA	Not Available	MAIN BURNER ORIFICE (MFG)
021	NLA	Not Available	MAIN BURNER ORIFICE (LP)
022	NLA	Not Available	INTERNAL ORIFICE (LP)
023	NLA	Not Available	SCREW ASSY - BLUE BLOCK OPE
024	Y303779		Conversion Kit
"	Y308377	Not Available	CONVERSION KIT (LP TO NATURAL)

the laundry company[®]

lows
the laundry company[®]