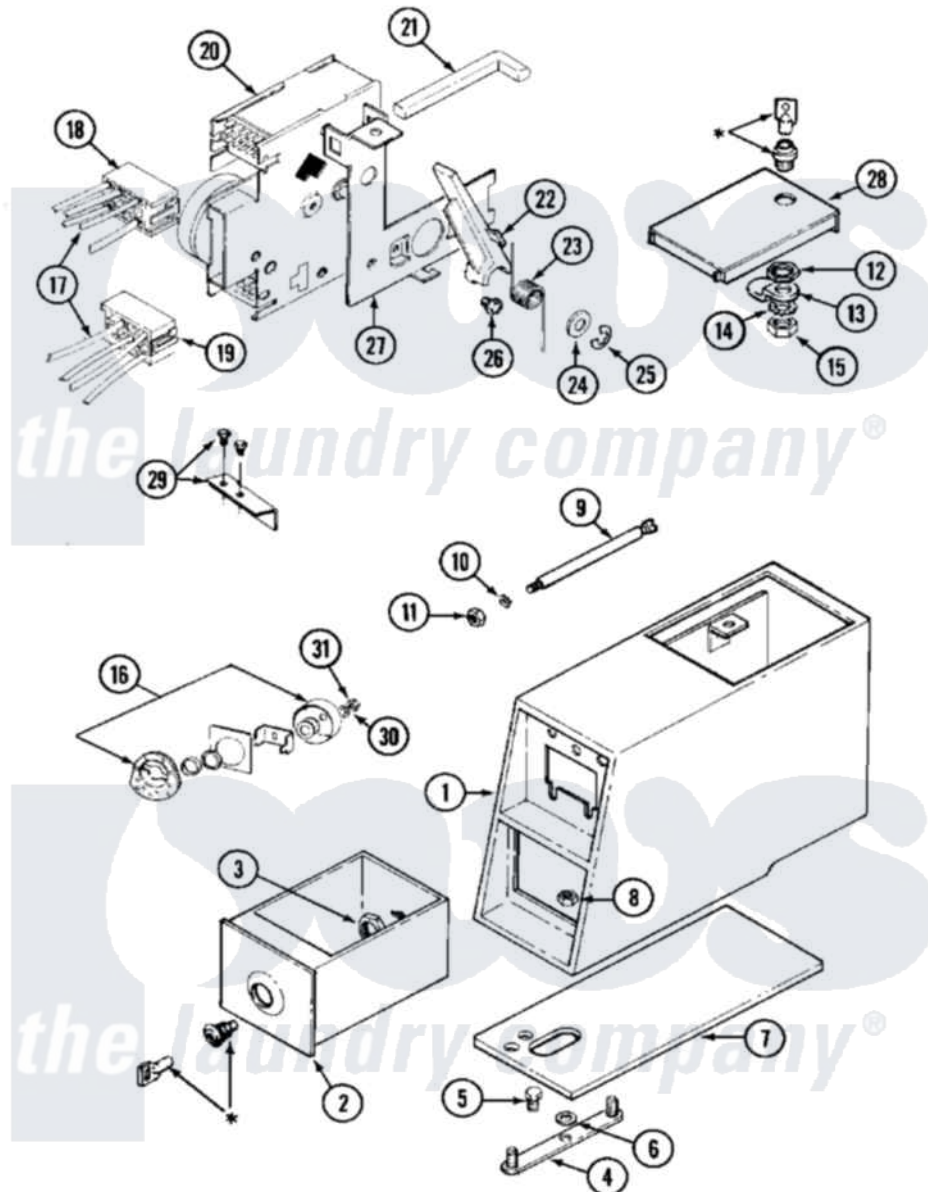


Maytag MAT10CSAGL 02 - CONTROL CENTER



* CONTACT YOUR COMMERCIAL LAUNDRY DISTRIBUTOR

Maytag [Commercial Maytag MAT10CSAGL Washer Parts](#) Parts Diagram 02 - CONTROL CENTER

[Click on the part number to view part](#)

Item	Original Part Number	Replaced By	Status	Part Description
001	206952	22001405		Case, Coin Slide
"	206952L	22001405		Case, Coin Slide
002	207913	208883		Coin Box K
"	NLA		Not Available	(ALM)
003	212328	W10139762		Hex Nut, 3/4-27
004	NLA		Not Available	STRAP, MOUNTING
005	211294	90767		Screw, 8A X 3/8 HeX Washer Head Tapping
006	910309			Washer, Mounting Strap
007	214660			Gasket, Control Center
008	Y052740	62739		Nut, Lock
009	215559			Bolt, Coin Slide Locking
010	910387			Lockwasher, Vault Assembly
011	Y052721			Nut, Terminal Block Plate
012	212328	W10139762		Hex Nut, 3/4-27
013	213750	W10133266		Cam-Lock
014	22001354	W10177242		Hex-Nut 9/32 - 28

015	22001355		Nut, Lock Cam
016	216203		Lockwasher, Double "D"
"	NLA	Not Available	LOCK CAM ASSY. NA
017	22001088		Wire Harness, Main
"	22001093		Wire Harness, Main
"	22002223	22002256	Wire Harness Kit
"	NLA	Not Available	HARNES, WIRE
018	22001349		HOUSING, CONNECTOR (BLK)
019	22001350	Not Available	HOUSING, CONNECTOR (WHT)
"	NLA	Not Available	CONNECTOR, WIRE
020	22001083		Timer
"	22001086		Timer
021	214666	216442	Rod, Actuator
022	22001042		Pivot Arm, Timer
023	214663		Spring For Timer Lever
024	214664	22001398	Retainer, Spring---NA
025	Y312270		Clip, Spring Retainer
026	216042	22001627	Screw
027	212276	W10116760	Screw
"	22001043		Bracket, Timer
028	204216	Not Available	DOOR, ACCESS (WHT)
"	204216L		Door, Access
029	207156	Not Available	ACTUATOR KIT, COIN SLIDE
"	22001179	Not Available	KIT, ACTUATOR
030	22001354	W10177242	Hex-Nut 9/32 - 28
031	22001355		Nut, Lock Cam

the laundry company[®]

the laundry company[®]