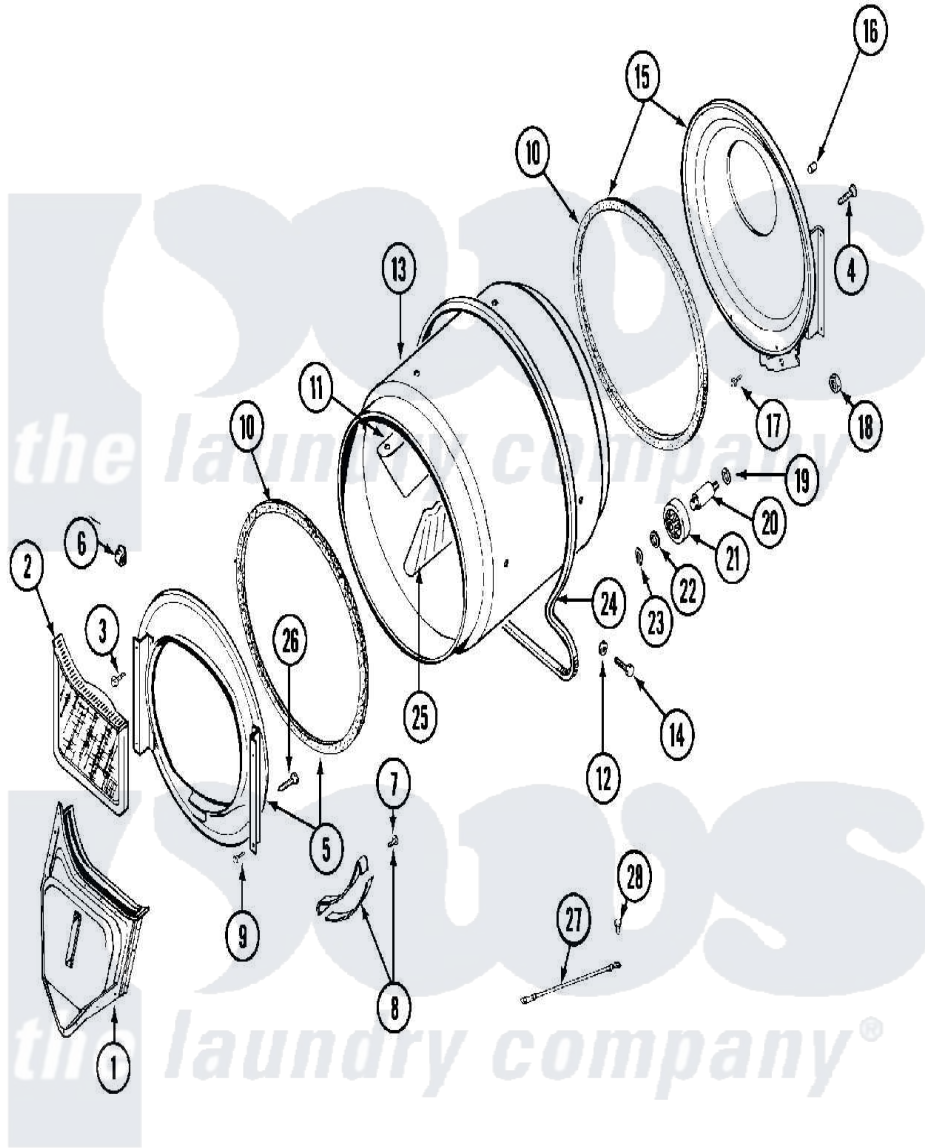


Maytag MDE10PDADL 06 - TUMBLER



Maytag [Commercial Maytag MDE10PDADL Dryer Parts](#) Parts Diagram 06 - TUMBLER
 Click on the part number to view part

| Item | Original Part Number | Replaced By | Status | Part Description |
|------|--------------------------|--------------------------|---------------|--------------------------------|
| 001 | 33001016 | | | Outlet Duct Assembly |
| 002 | 33001170 | 33002970 | | Lint Filte |
| 003 | NLA | | Not Available | SCREW, TUMBLER SUPPORT |
| 004 | Y313561 | | | Screw---NA |
| 005 | 33001179 | | | Front, Tumbler |
| 006 | Y310376 | | | Clip, Door Switch Harness |
| 007 | 210720 | | | Rivet, Bearing To Tumbler Frnt |
| 008 | 306508 | | | Tumbler Bearing Kit ---W |
| 009 | Y310632 | 1163839 | | Screw |
| 010 | 314820 | | | Seal, Tumbler |
| 011 | 33001012 | | | Baffle |
| 012 | 314158 | | | Washer, Baffle To Tumbler |
| 013 | 33001108 | | Not Available | DRYER TUMBLER, W/O BAFFLES |
| 014 | Y310759 | | | Screw, Tumbler Baffles |
| 015 | 33001178 | | | Back, Tumbler |

| | | | |
|-----|--------------------------|---------------------------|-----------------------------------|
| 016 | NLA | Not Available | COVER, THREAD |
| 017 | Y310632 | 1163839 | Screw |
| 018 | 312538 | 33001443 | Nut, Hex |
| 019 | Y313347 | 312535 | Washer, Vault Mounting Brk. |
| 020 | Y312948 | 6-3129480 | Shaft- Tumbler |
| 021 | Y303373 | 12001541 | Drum Roller/Washer Assembly--W |
| 022 | 312535 | | Washer, Vault Mounting Brk. |
| 023 | 410233 | 9703438 | Ring-Retr |
| 024 | Y312959 | | Poly "V" Belt For Tumbler |
| 025 | 33001004 | | Baffle, Tall |
| 026 | Y314110 | 33002917 | Screw, No.10-16 |
| 027 | 901220 | | Ground Wire |
| 028 | 910343 | 488234 | Screw 8-32 X 1/4 |

the laundry company[®]

lows
the laundry company[®]

lows
the laundry company[®]