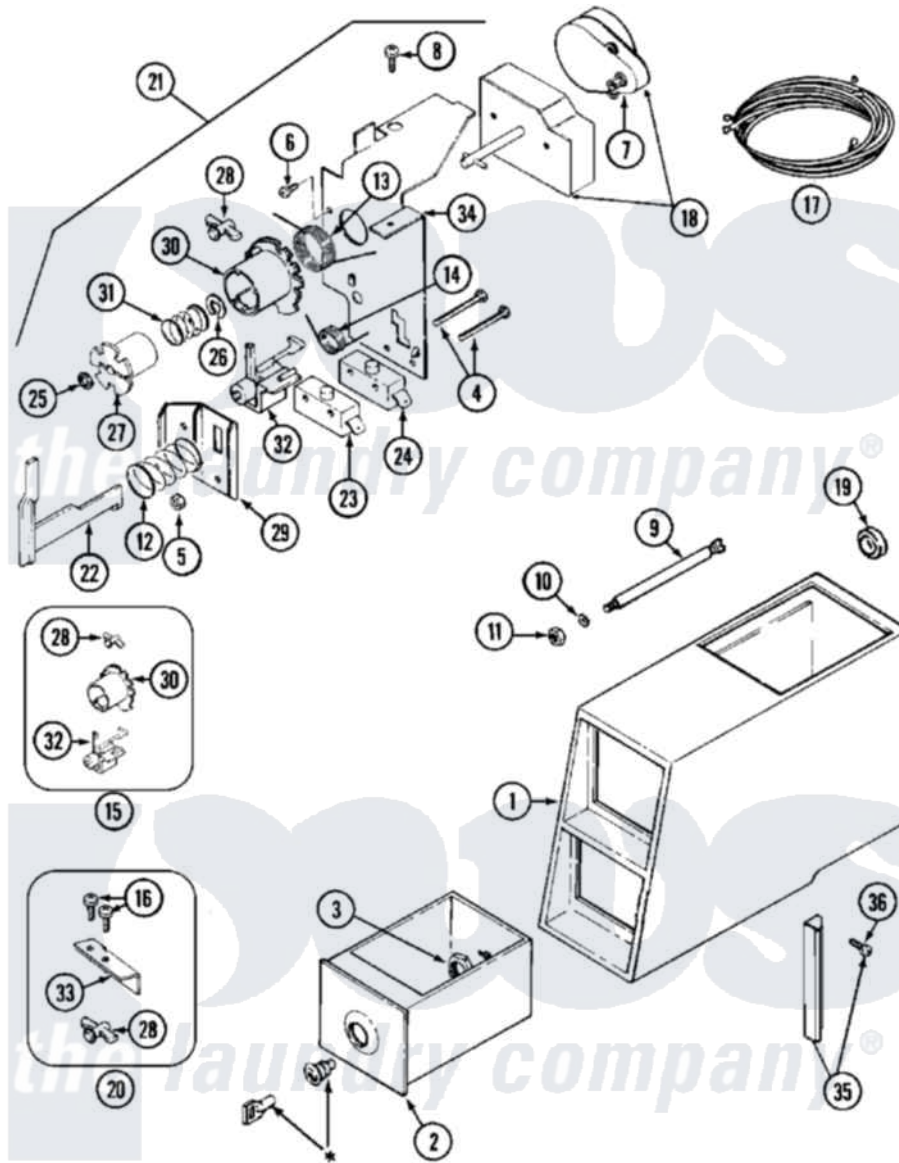


# Maytag MDE13CSACL 02 - CONTROL CENTER



\* CONTACT YOUR COMMERCIAL LAUNDRY DISTRIBUTOR

Maytag [Commercial Maytag MDE13CSACL Dryer Parts](#) Parts Diagram 02 - CONTROL CENTER  
 Click on the part number to view part

| Item | Original Part Number    | Replaced By               | Status        | Part Description           |
|------|-------------------------|---------------------------|---------------|----------------------------|
| 001  | <a href="#">Y307081</a> |                           |               | Coin Meter Weld Assembly   |
| "    | NLA                     |                           | Not Available | (ALM)                      |
| 002  | 205423                  | <a href="#">208883</a>    |               | Coin Box K                 |
| "    | 205423L                 | <a href="#">208883</a>    |               | Coin Box K                 |
| 003  | 212328                  | <a href="#">W10139762</a> |               | Hex Nut, 3/4-27            |
| 004  | <a href="#">315277</a>  |                           |               | Screw                      |
| 005  | Y052634                 | <a href="#">701719</a>    |               | Nut, Hex                   |
| 006  | 910708                  | <a href="#">488234</a>    |               | Screw 8-32 X 1/4           |
| 007  | <a href="#">305870</a>  |                           |               | Timer Motor                |
| "    | 306527                  | <a href="#">305812</a>    |               | Timer                      |
| 008  | 211168                  | <a href="#">W10139210</a> |               | Screw, 8-18 X 5/16         |
| 009  | <a href="#">215559</a>  |                           |               | Bolt, Coin Slide Locking   |
| 010  | <a href="#">910387</a>  |                           |               | Lockwasher, Vault Assembly |
| 011  | <a href="#">Y052721</a> |                           |               | Nut, Terminal Block Plate  |
| 012  | NLA                     |                           | Not Available | SPRING, HELICAL            |
| 013  | <a href="#">314331</a>  |                           |               | Spring, Torsion Return     |

|     |                         |                          |   |
|-----|-------------------------|--------------------------|---|
| 014 | <a href="#">314332</a>  |                          | Spring, Actuator                            |
| 015 | <a href="#">306104</a>  |                          | Actuator Switch Kit                         |
| 016 | 212707                  | <a href="#">3196385</a>  | Screw                                       |
| 017 | <a href="#">305800</a>  |                          | Wire Harness For Timer                      |
| 018 | <a href="#">305796</a>  |                          | Timer                                       |
| "   | <a href="#">305812</a>  |                          | Timer                                       |
| "   | <a href="#">305813</a>  |                          | Part Not Available Part Not Used            |
| 019 | Y313671                 | <a href="#">33001303</a> | Grommet, Plate Hole                         |
| 020 | <a href="#">Y308109</a> |                          | Slide And Adj. Return Bracket               |
| 021 | <a href="#">305797</a>  |                          | Torsion Timer Assembly Complete             |
| "   | <a href="#">305831</a>  |                          | Torsion Timer Assembly                      |
| "   | NLA                     | Not Available            | TORSION TIMER ASSEMBLY                      |
| 022 | 314337                  | <a href="#">33002968</a> | Slider                                      |
| 023 | 305798                  | Not Available            | BYPASS SWITCH FOR MOTOR                     |
| 024 | <a href="#">Y305799</a> |                          | Bypass Switch For Heater                    |
| 025 | <a href="#">211790</a>  |                          | Lock Ring For Timer Shaft                   |
| 026 | <a href="#">Y312270</a> |                          | Clip, Spring Retainer                       |
| 027 | 314330                  | Not Available            | DRIVER FOR INDEX WHEEL (NOT INCLUDED W/KIT) |
| 028 | <a href="#">314335</a>  |                          | Peg, Tine Adjustment                        |
| "   | 314547                  | <a href="#">Y308109</a>  | Slide And Adj. Return Bracket               |
| 029 | <a href="#">314339</a>  |                          | Switch And Slider Bracket                   |
| 030 | <a href="#">314546</a>  |                          | Wheel, Index                                |
| 031 | <a href="#">211065</a>  |                          | Spring, Index Wheel                         |
| 032 | 314548                  | <a href="#">33002967</a> | Actuator, Switch                            |
| 033 | <a href="#">314334</a>  |                          | Bracket For Coin Slide                      |
| 034 | <a href="#">314333</a>  |                          | Timer Mounting Bracket                      |
| 035 | NLA                     | Not Available            | STOP, COIN METER                            |
| 036 | <a href="#">Y014872</a> |                          | Screw, Coin Meter Stop -                    |

