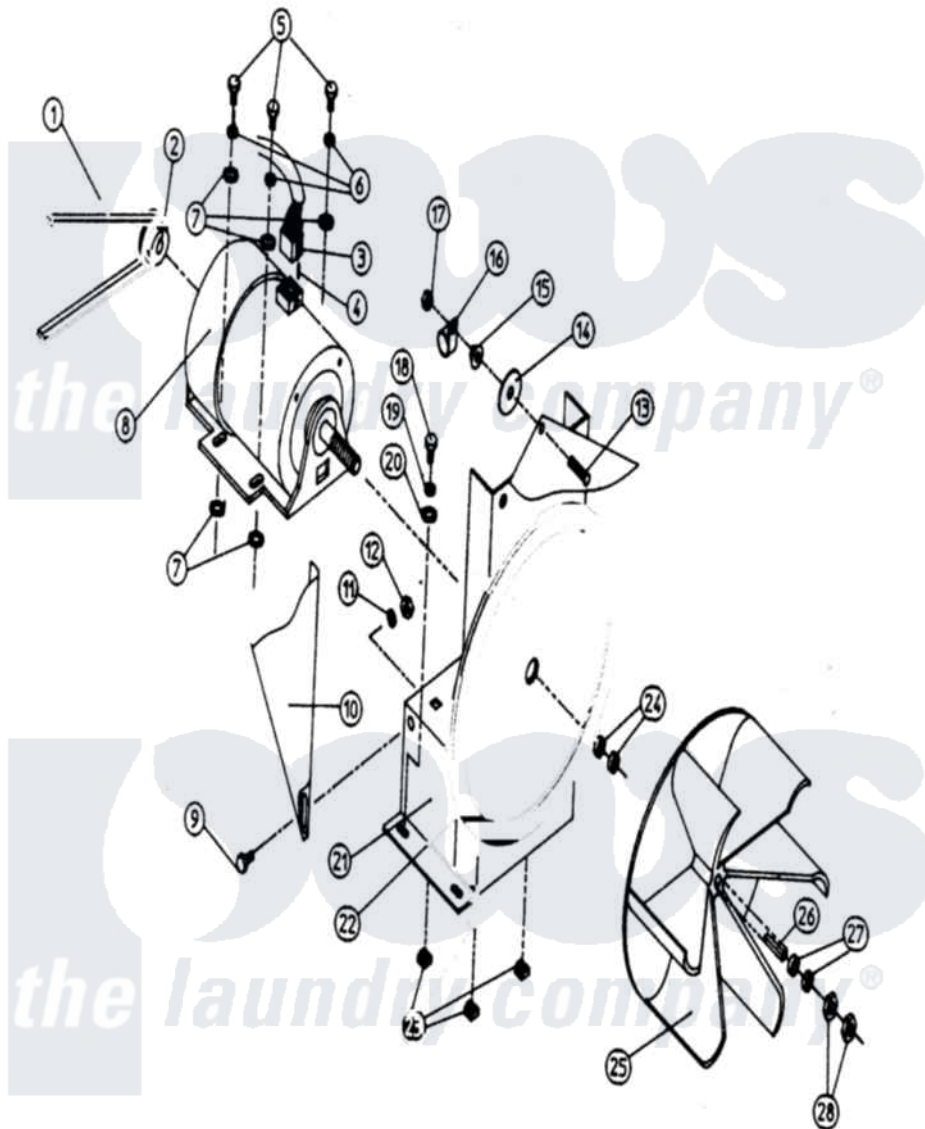


# Maytag MDG32PC3AW 18 - MOTOR & MOUNT ASSEMBLY



Maytag [Commercial Maytag MDG32PC3AW Dryer Parts](#) Parts Diagram 18 - MOTOR & MOUNT ASSEMBLY  
 Click on the part number to view part

| Item | Original Part Number    | Replaced By               | Status        | Part Description                                      |
|------|-------------------------|---------------------------|---------------|-------------------------------------------------------|
| 000  | W10124350               |                           | Not Available | ORDER PARTS FROM AMERICAN DRYER COPR. AT 508-678-9000 |
| 001  | A100144                 | <a href="#">W10146577</a> |               | 4I420 V be                                            |
| 002  | A101131                 | <a href="#">W10146633</a> |               | 2.25 OD X                                             |
| 003  | A137030                 | <a href="#">137030</a>    |               | 8 Pin Cmnl                                            |
| 004  | A122701                 | <a href="#">122701</a>    |               | MNL Socket                                            |
| "    | A122801                 | <a href="#">W10146716</a> |               | Mate-N-Loc                                            |
| 005  | A150501                 | <a href="#">150501</a>    |               | 5 16-18 X                                             |
| 006  | A153002                 | <a href="#">8182939</a>   |               | Washer, Lock                                          |
| 007  | A153001                 | <a href="#">153001</a>    |               | 5 16 Flat                                             |
| 008  | <a href="#">A100065</a> |                           |               | MOTOR W/PLUG (1/2 HP 100-230V. 60HZ, 10               |
| 009  | A150111                 | <a href="#">150111</a>    |               | 1 4-20 X 1                                            |
| 010  | A311403                 | <a href="#">311403</a>    |               | Tumbler be                                            |
| 011  | A153007                 | <a href="#">153007</a>    |               | 1 4 Split                                             |
| 012  | A152002                 | <a href="#">152002</a>    |               | 1 4-20 Hex                                            |

|     |         |                           |               |                                          |
|-----|---------|---------------------------|---------------|------------------------------------------|
| 013 | A153525 | <a href="#">153525</a>    |               | 1 4-20 X 1                               |
| 014 | A153003 | <a href="#">153003</a>    |               | 3 8 X 1 1                                |
| 015 | A152014 | <a href="#">152014</a>    |               | 1 4-20 Ser                               |
| 016 | A121490 | <a href="#">121490</a>    |               | 1 2 White                                |
| 017 | A152002 | <a href="#">152002</a>    |               | 1 4-20 Hex                               |
| 018 | A150501 | <a href="#">150501</a>    |               | 5 16-18 X                                |
| 019 | A153002 | <a href="#">8182939</a>   |               | Washer, Lock                             |
| 020 | A153001 | <a href="#">153001</a>    |               | 5 16 Flat                                |
| 021 | A803969 | <a href="#">W10147084</a> |               | 430 1 2 HP                               |
| "   | A850019 | <a href="#">W10147655</a> |               | 215 430 MO                               |
| 022 | A117600 |                           | Not Available | TAPE, NOISE SUPPRESSOR<br>(SOLD IN FEET) |
| 023 | A154000 | <a href="#">154000</a>    |               | 5 16-18 TI                               |
| 024 | A153050 | <a href="#">153050</a>    |               | 1 2 X 1 1                                |
| 025 | A100604 | <a href="#">W10146628</a> |               | 12 1 2 Im                                |
| 026 | A100702 | <a href="#">100702</a>    |               | 1 8 X 1 8                                |
| 027 | A153050 | <a href="#">153050</a>    |               | 1 2 X 1 1                                |
| 028 | A152006 | <a href="#">W10146766</a> |               | 1 2-20 LH                                |

