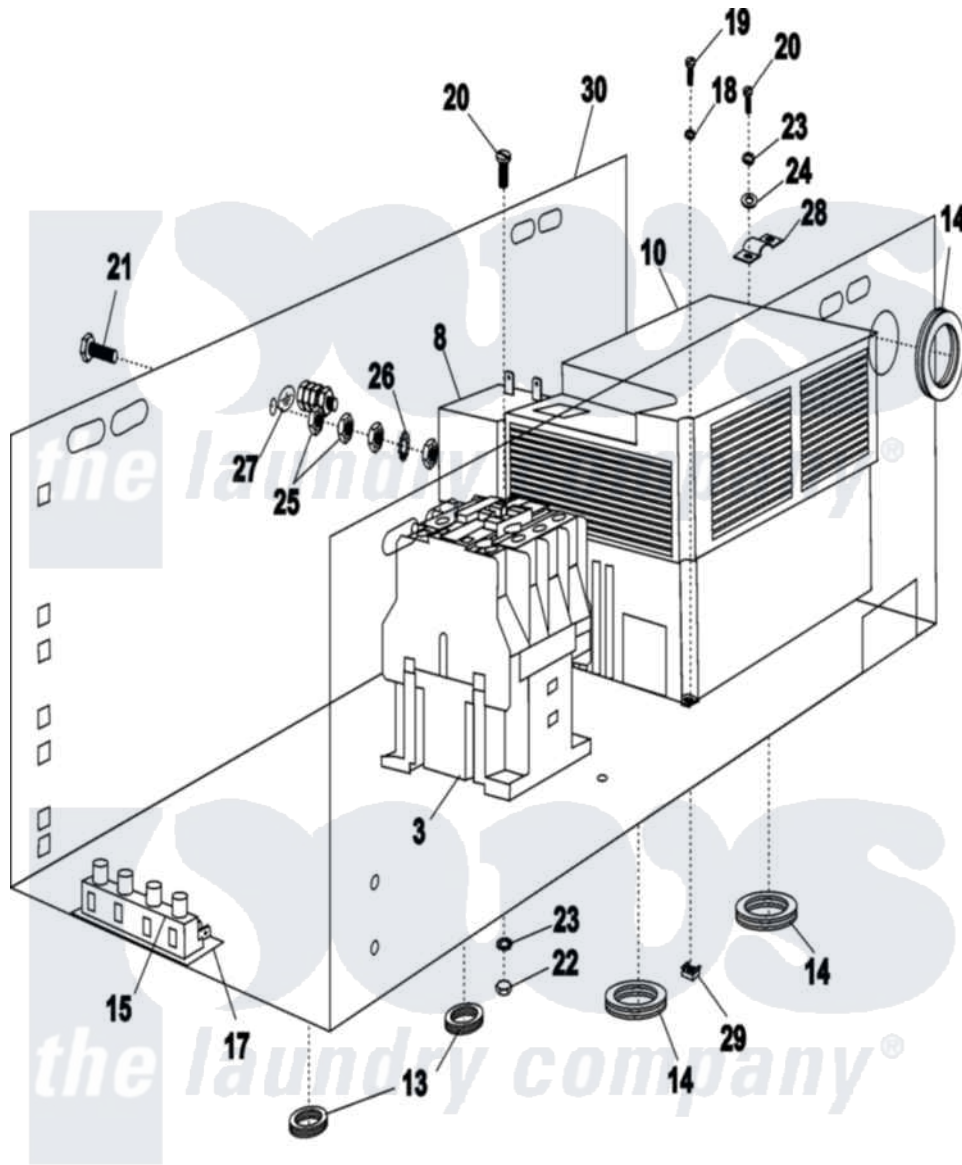


# Maytag MFS35PNFTS 09 - ELECTRICAL



27-Apr-05  
516 534

Maytag [Commercial Maytag MFS35PNFTS Washer Parts](#) Parts Diagram 09 - ELECTRICAL  
Click on the part number to view part

Item	Original Part Number	Replaced By	Status	Part Description
003	<a href="#">23003750</a>			Frequency Inverter Contactor
008	<a href="#">23004406</a>			Filter, Mcg
010	<a href="#">23003986</a>			Inverter E520s-2.2kW
"	<a href="#">23004220</a>			Fan, Inverter Freq
"	<a href="#">23004407</a>			Cable, Communication
"	<a href="#">W10415771</a>			Inverter E520s-2.2kW, After Series 22 Only
013	<a href="#">23001138</a>			Bushing, Cable Passage
014	<a href="#">23001117</a>			Ring, Rubber
015	<a href="#">23001113</a>			Housing, Connector
017	<a href="#">23004408</a>			Insulation Paper
018	23001333	<a href="#">23004485</a>		Lock Washer M5
019	<a href="#">23004409</a>			Bolt M5 X 16
020	<a href="#">23001089</a>			Screw
021	23001311	<a href="#">23002806</a>		Screw
022	23001055	<a href="#">23001014</a>		Nut M4
				Lock Washer External Teeth

023	<a href="#">23001013</a>		Lock washer External Teeth M4
024	<a href="#">23002504</a>		Washer M4
025	<a href="#">23001312</a>		Mut M6
026	23001028	<a href="#">23002756</a>	Lockwasher
027	<a href="#">23002505</a>		Plate, Earth
028	<a href="#">23004094</a>		Holder
029	<a href="#">23001448</a>		Nut, Rapid
030	<a href="#">23004386</a>		Panel, Electrical Components

