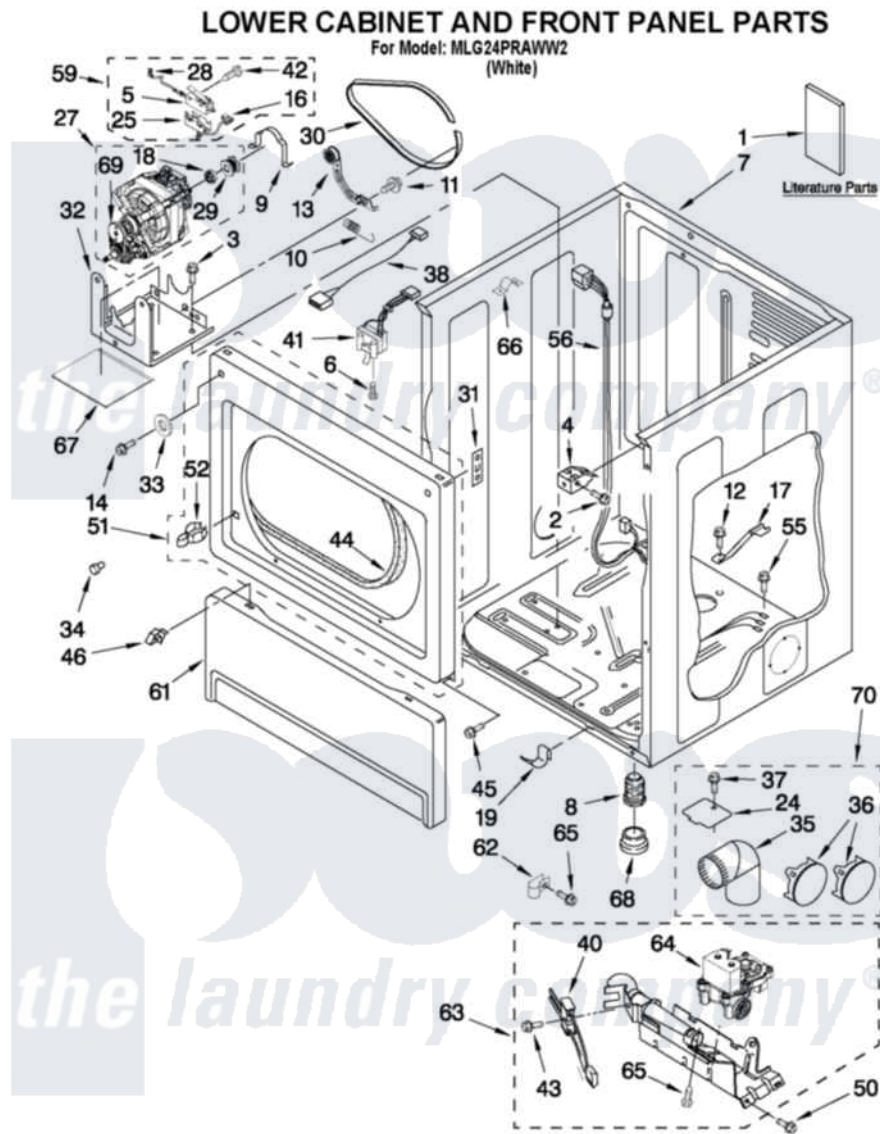


# Maytag MLG24PRAWW2 01 - LOWER CABINET AND FRONT PANEL PARTS



W10469608

2

Maytag [Commercial Maytag MLG24PRAWW2 Dryer Parts](#) Parts Diagram 01 - LOWER CABINET AND FRONT PANEL PARTS

[Click on the part number to view part](#)

Item	Original Part Number	Replaced By	Status	Part Description
1	W10184580		Not Available	Installation Instructions
"	W10135168		Not Available	Tech Sheet
"	W10469608		Not Available	REPAIR PARTS LIST
"	W10135291		Not Available	Card Reader Installation Instructions
2	3391915	<a href="#">681615</a>		Screw
3	3390663	<a href="#">681414</a>		Screw, 10AB X 1/2
4	<a href="#">3391846</a>			Clip, Front Panel
5	<a href="#">8564010</a>			Assembly, Switch And Actuator
6	697773	<a href="#">3395530</a>		Screw
7	<a href="#">8310656</a>			Cabinet
8	3392100	<a href="#">49621</a>		Feet-Leveling
9	<a href="#">660658</a>			Clamp, Motor Mounting 343481 685441
10	<a href="#">3387374</a>			Spring, Idler

11	<a href="#">3389420</a>		Retainer-Idler 1/4-20 X 1/16
12	<a href="#">693995</a>		Screw, Hex Head
13	<a href="#">W10344192</a>		Idler Assembly
14	<a href="#">3400077</a>		Screw, 10-16 X 1/2
16	<a href="#">8539892</a>		Wire-Motor To Belt Switch
17	<a href="#">8529757</a>		Bracket, Burner
18	<a href="#">3393657</a>		Restrainer, Belt
19	<a href="#">W10291934</a>		Clip
24	<a href="#">3394331</a>		Plate Cover
25	<a href="#">8564011</a>		Bracket-Switch
27	<a href="#">W10139766</a>	<a href="#">W10396034</a>	Motor Assembly 60 Hz
28	<a href="#">W10167613</a>		Wire, Belt Switch
29	3394341	<a href="#">W10299847</a>	Pulley-Motor
30	<a href="#">W10131172</a>		Belt, Drive
31	<a href="#">3390902</a>		Clip, Door Hinge
32	<a href="#">W10135695</a>		Bracket, Motor
33	3392186	<a href="#">4159590</a>	Washer
34	<a href="#">693152</a>		Bumper, Console
35	279731	<a href="#">49026</a>	4" - 90° Elbow
36	697750	<a href="#">W10470674</a>	Dryer Exhaust Kit
37	<a href="#">488729</a>		Screw
38	<a href="#">8283298</a>		Jumper, Door Switch
40	686590	<a href="#">279311</a>	Ignitor
41	3406109	<a href="#">3406107</a>	Door Switch Assembly
42	<a href="#">W10002600</a>		Screw, 6-20 X 1 1/4
43	<a href="#">3393909</a>		Screw, 8-32 X 7/8
44	<a href="#">3387242</a>		Seal, Front Panel
45	342055	<a href="#">488627</a>	Screw
46	<a href="#">3388229</a>		Retainer, Toe Panel
50	343641	<a href="#">681414</a>	Screw, 10AB X 1/2
51	W10192882	<a href="#">W10242810</a>	Panel
52	696144	<a href="#">279570</a>	Latch
55	3390647	<a href="#">488729</a>	Screw
56	<a href="#">W10169687</a>		Harness
59	<a href="#">W10155571</a>		Switch, Assembly
61	697215	<a href="#">3406797</a>	Toe Panel
62	<a href="#">3387561</a>		Clamp-Pipe
63	W10400668	<a href="#">W10492508</a>	Burner-Gas
64	<a href="#">W10299939</a>		Valve, Gas 60 Hz
65	<a href="#">3387057</a>		Screw, 10-16 X 1/2 Orifice, Burner
66	<a href="#">98997</a>		Clip, Harness Following Parts Optional Are Not Supplied On This Whirlpool Model. But Are Available For Purchase.
67	<a href="#">W10212660</a>		Pad, Sound Dampening
68	<a href="#">3391943</a>		Boot, Foot
69	<a href="#">3405160</a>		Belt, Drive
NI	279818	<a href="#">W10470674</a>	Dryer Exhaust Kit