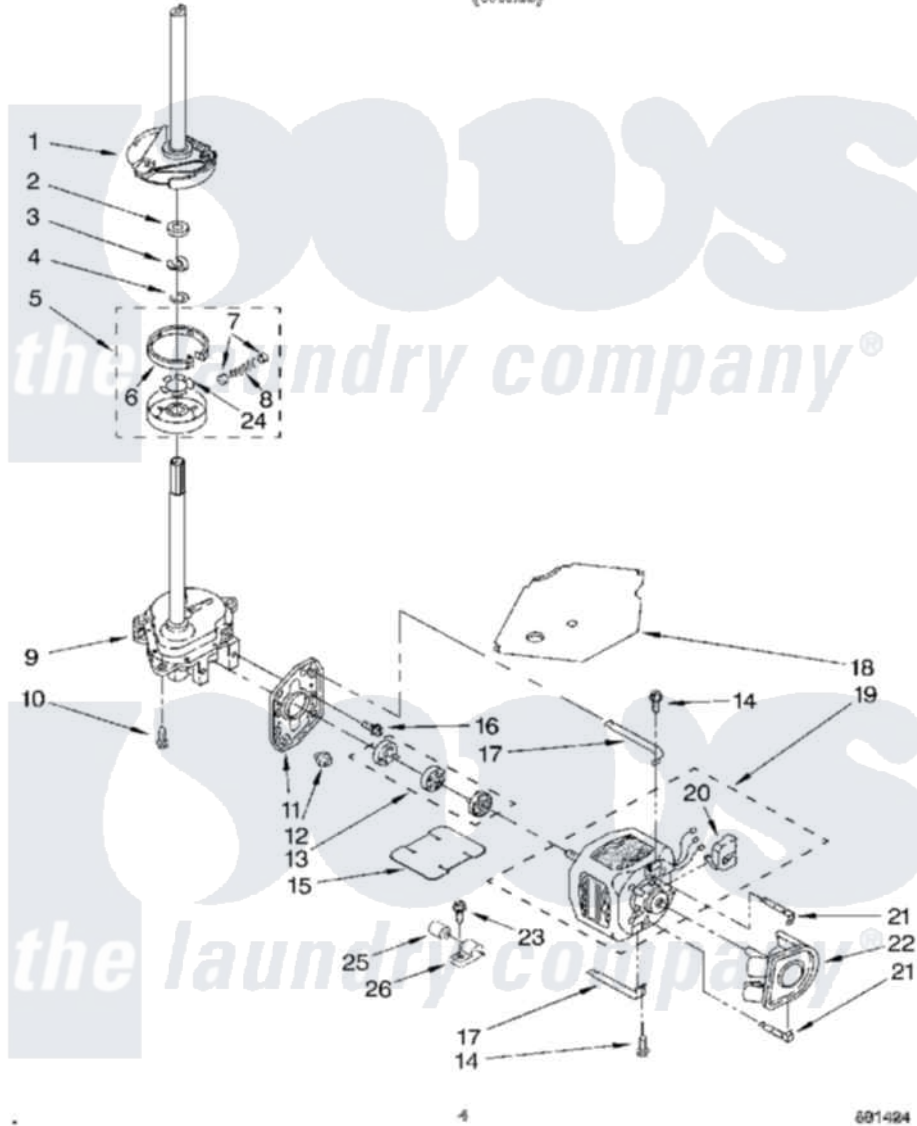


# Whirlpool CAE2792EW0 03 - BRAKE, CLUTCH, GEARCASE, MOTOR AND

## BRAKE, CLUTCH, GEARCASE, MOTOR AND PLIMP PARTS

For Models: CAE2792 EW0  
(50/11lb)



Whirlpool [Commercial Whirlpool CAE2792EW0 Washer Parts](#) Parts Diagram 03 - BRAKE, CLUTCH, GEARCASE, MOTOR AND

[Click on the part number to view part](#)

Item	Original Part Number	Replaced By	Status	Part Description
1	388951	<a href="#">285792</a>		Basketdrive
2	<a href="#">63292</a>			Washer, Spin Tube Thrust
3	62697	<a href="#">W10080230</a>		Ring, Spin Tube Support
4	63283	<a href="#">285353</a>		Ring
5	3946794	<a href="#">285785</a>		Clutch
6	3946793	<a href="#">285790</a>		Lining
7	<a href="#">62646</a>			Cap, Clutch Spring
8	3363337	<a href="#">3946792</a>		Spring And Damper Assembly
9	3360630	<a href="#">3360629</a>		Gearcase
10	3357334	<a href="#">3400516</a>		Screw Anti-Rattle
11	<a href="#">62611</a>			Plate, Motor Mount To Gearcase
12	<a href="#">62691</a>			Grommet, Motor
13	3364003	<a href="#">285753A</a>		Coupling
14	3387485	<a href="#">273556</a>		Screw, 10-16 X 5/8
15	<a href="#">3946532</a>			Shield, Motor

16	3357334	<a href="#">3400516</a>	Screw Anti-Rattle
17	3349637	<a href="#">W10086010</a>	Retainer, Motor
18	<a href="#">3362089</a>		Shield, Tub To Motor
19	3349644	<a href="#">661600</a>	Motor, Main Drive
20	62850	<a href="#">8529896</a>	Switch, Main Drive Motor
21	62700	<a href="#">8546127</a>	Retainer, Pump
22	<a href="#">3363394</a>		Pump
23	62863	<a href="#">3390631</a>	Screw, 10-16 X 3/8
24	<a href="#">3355454</a>		Clip, Main Drive
25	357021	<a href="#">8572717</a>	Capacitor, Motor Start
26	<a href="#">357030</a>		Clamp, Capacitor

*the laundry company*<sup>®</sup>

*the laundry company*<sup>®</sup>

*the laundry company*<sup>®</sup>