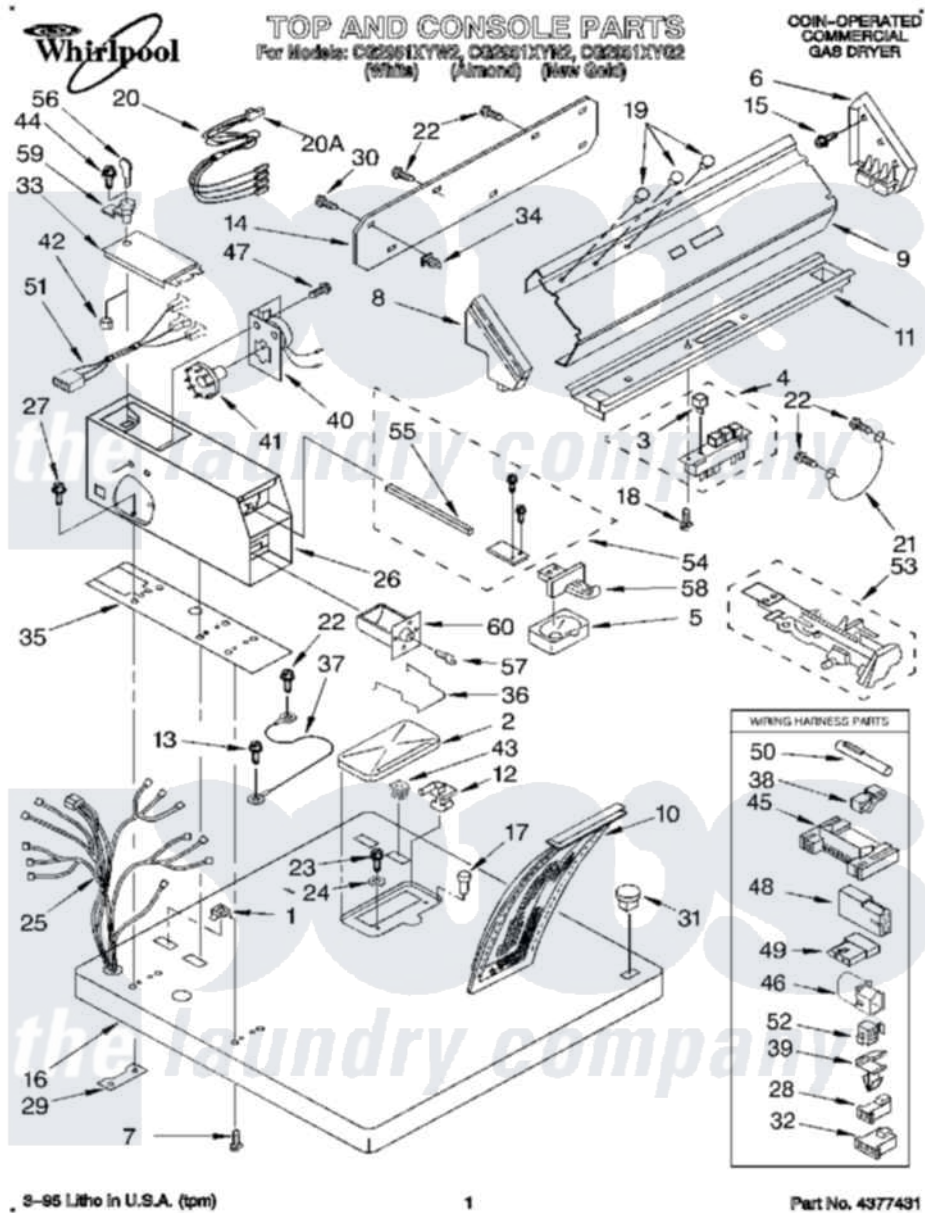


Whirlpool CG2951XYG2 01 - TOP AND CONSOLE



3-95 Litho in U.S.A. (tpm)

1

Part No. 4377431

Whirlpool [Commercial Whirlpool CG2951XYG2 Dryer Parts](#) Parts Diagram 01 - TOP AND CONSOLE
 Click on the part number to view part

Item	Original Part Number	Replaced By	Status	Part Description
1	358472			Stop, Push-In Top
2	691205		Not Available	Cover, Lint Screen
3	3348587			Button, Pushbutton
4	3401851			Switch, Pushbutton
5	385421			Funnel, Coin
6	63795	285653		Endcap
7	98445			Screw, 10-16 X 3/4
8	3347710	3347718		End Cap
9	3393405	3387362		Panel, Control
10	339392			Screen, Lint
11	3398113	3949733		Bracket, Control
12	691194	3978606		Hinge, Lint Lid
"	691193	W10044470		Hinge, RH
13	339805			Screw, 10-32 X 3/16
14	3387978			Panel, Rear Console
15	97787	W10109200		Screw, Baffle Mounting

16	3402300		Top
"	3402301		Top
"	3402302		Top (New Gold)
17	297535	17258	Bumper
18	9424101	965173	Screw, 8 X 3/8 Phlps. Round Hd.
19	3348109		Lens Light
20	3401177		Light, Indicator Assembly
"	351297		Plug, Harness
21	690853		Wire, Ground
22	343641	681414	Screw, 10AB X 1/2
23	688983	487240	Screw, For Mtg. Service Capacitor
24	237446	487596	Washer
25	3401738		Harness, Wiring
26	3395378	8527844	Case
"	3395379	279995	Case
"	3395380		Not Available
			Case, Meter (Golden Harvest)
27	3349065		Bolt, Meter Case Mounting
28	3399964		Connector, 2-Position
29	3347825	3353813	Plate, Mounting
30	64211	388326	Screw, 8-18 X 1.25
31	387371		Lock, Plug Also Available
32	3399963		Connector, 3-Position (Gas Valve)
33	3351136		Service Door Assembly
"	3351137		Not Available
			Door, Service (For Almond Model)
"	3351138	285880	Door
34	689559		Nut, Push-In
35	3348850	3954812	Cushion, Meter Case
36	3352295		Guide, Drawer
37	340025	687133	Wire
38	689180		Clip, Harness
39	3394427		Clip-Harness
40	3387975	279737	Timer
41	3387974		Timing Cam
"	343777		Timing Cam
42	90406		Cage Nut, 5/16-18
43	358473		Nut, Push-In
44	358409		Screw And Washer
45	3395683		Receptacle, Multi-Terminal
46	342529		Cap, Terminal (6-Way) (Uses Terminal 94614)
47	339805		Screw, 10-32 X 3/16
48	717252		Receptacle, Terminal
49	717253		Receptacle
50	351296		Receptacle
51	3401126		Harness, Timer
52	342529		Cap, Terminal (6-Way) (Uses Terminal 94614)