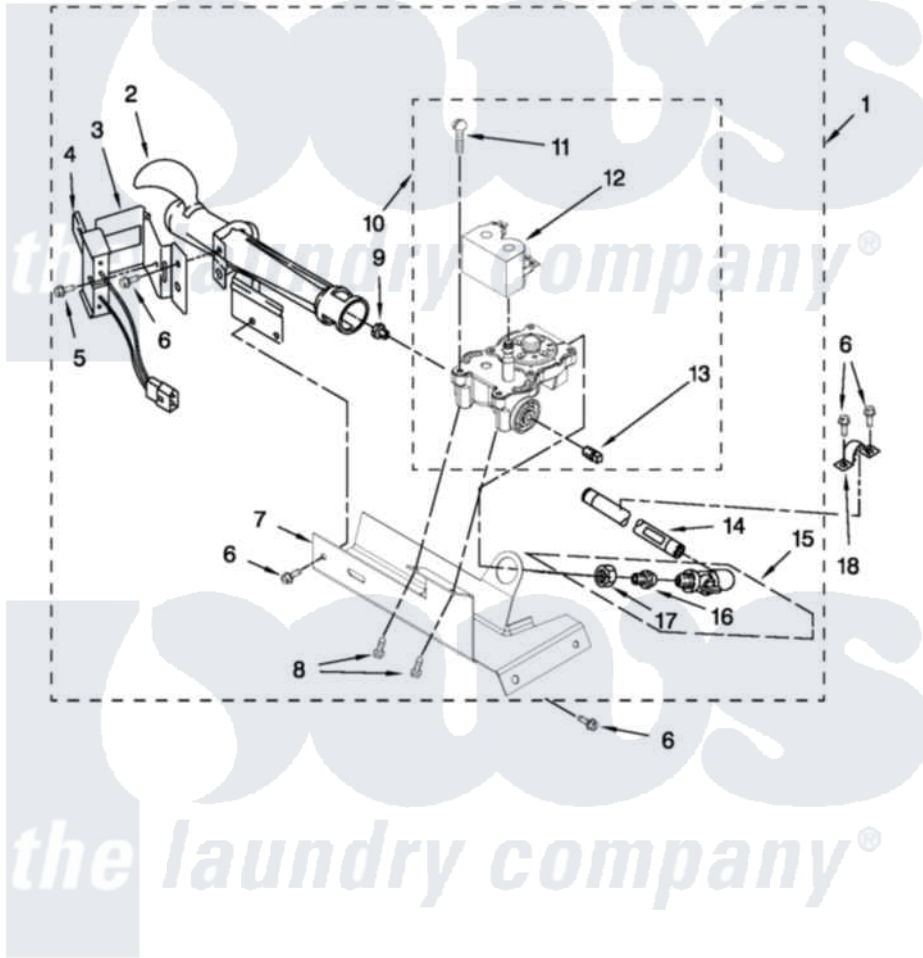


# Whirlpool CGM2941TQ2 04 - BURNER ASSEMBLY

## BURNER ASSEMBLY

For Model: CGM2941TQ2  
(White)

USE WITH TYPE 1 - NATURAL, TYPE 2 - MIXED, TYPE 3 - MANUFACTURED  
AND TYPE 4 - LIQUEFIED PROPANE AND BUTANE GASES



W10469613

FOR ORDERING INFORMATION REFER TO PARTS PRICE LIST

8

Whirlpool [Commercial Whirlpool CGM2941TQ2 Dryer Parts](#) Parts Diagram 04 - BURNER ASSEMBLY  
Click on the part number to view part

Item	Original Part Number	Replaced By	Status	Part Description
1	W10400396	<a href="#">W10492502</a>		Burner-Gas
2	688617	<a href="#">693140</a>		Burner
3	<a href="#">694298</a>			Bracket, Ignitor
4	686590	<a href="#">279311</a>		Ignitor
5	<a href="#">3393909</a>			Screw, 8-32 X 7/8
6	343641	<a href="#">681414</a>		Screw, 10AB X 1/2
7	<a href="#">693986</a>			Base, Burner
8	<a href="#">3387057</a>			Screw, 10-16 X 1/2 Orifice, Burner
9	<a href="#">234870</a>			Orifice, Burner
"	<a href="#">234868</a>			Orifice, Burner
10	W10304604	<a href="#">W10500695</a>		Valve-Gas
11	<a href="#">326049536</a>			Screw, Coil
12	<a href="#">W10328463</a>			Coil, 60 Hz
13	<a href="#">W10295523</a>			Plug, Pipe
14	<a href="#">W10110396</a>			Pipe, Gas Supply
15	661580	<a href="#">345062</a>		Valve

16	<a href="#">3393767</a>		Pipe, Tail
17	<a href="#">233076</a>		Nut, Compression
18	<a href="#">341029</a>		Clamp, Pipe Door Spring
NI	694572	<a href="#">49572A</a>	Conversion Kit To Type L.p.g.f

