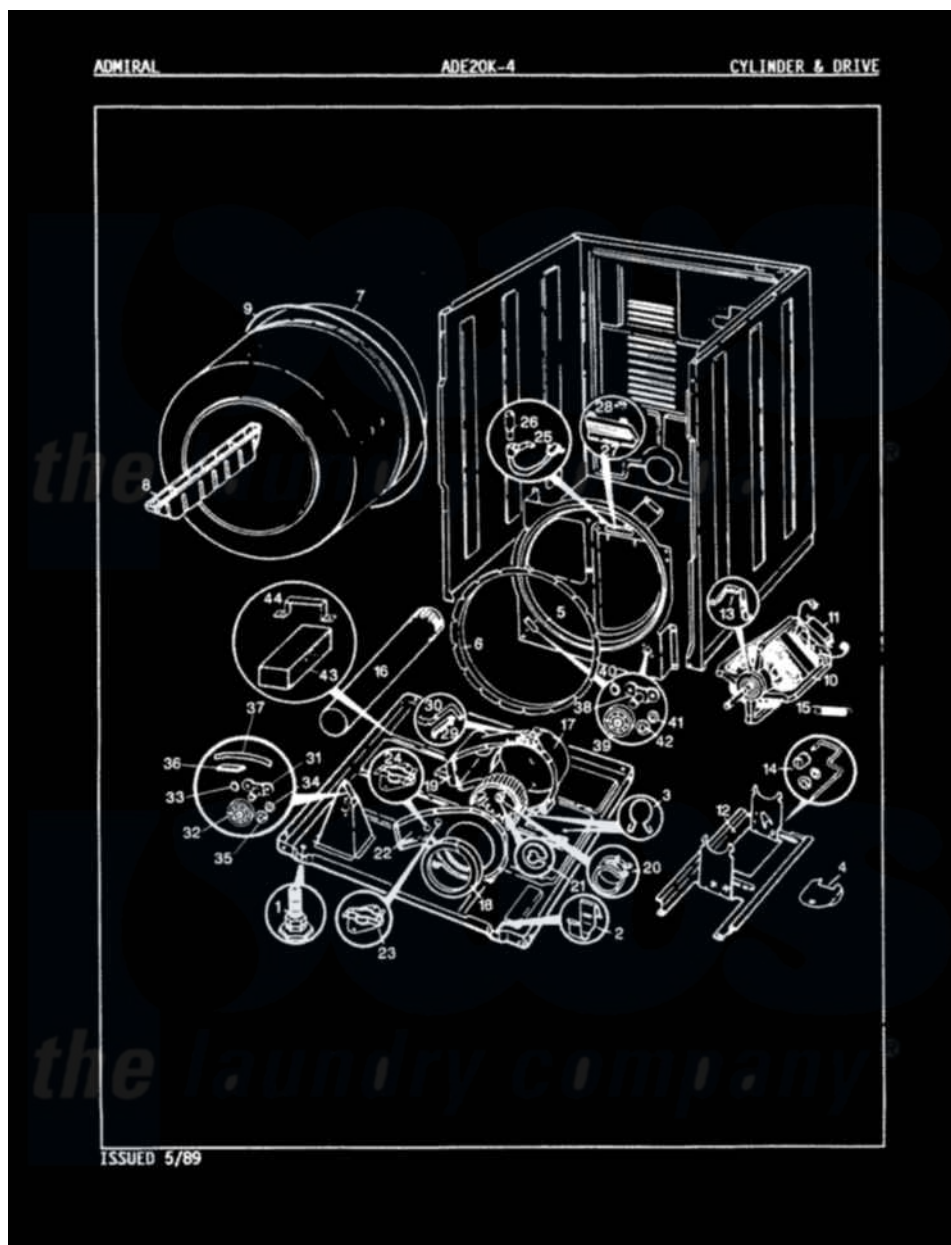


Admiral ADE20K4H 02 - CYLINDER & DRIVE (REV. A)



Admiral Residential Admiral ADE20K4H Dryer Parts Parts Diagram 02 - CYLINDER & DRIVE (REV. A)

Click on the part number to view part

Item	Original Part Number	Replaced By	Status	Part Description
1	63-5519		Not Available	LEG, LEVELING
2	53-0120			Clip, Front Panel
3	25-7027	16515		Clip
4	53-0153		Not Available	SHIELD, WIRING
"	25-7741	W10116760		Screw
5	Y02100001	LA-1054		Dryer Bulkhead Kit
"	25-7733	681414		Screw, 10AB X 1/2
6	53-0282	31001637		Seal Assembly, Cylinder Front
7	53-1250			Cylinder
8	Y02100002		Not Available	BAFFLE (WHT)
"	25-7759	3196164		Screw
9	53-1080	341241		Belt
"	LA-1004			Motor Mtg. Kit
10	53-0189	LA-1004		Motor Mtg. Kit
11	53-0936	LA-1004		Motor Mtg. Kit
12	53-0105		Not Available	BRACKET

"	25-7811		Not Available	SCREW
13	53-0214	660658		Clamp, Motor Mounting 343481 685441
14	53-0199	53-2366		Idler Arm
15	53-0207		Not Available	IDLER SPRING
16	53-0134			Duct, Exhaust
17	53-0774		Not Available	BLOWER HOUSING
18	53-0203	12001324		Duct Kit, Collector
"	53-1103		Not Available	BLOWER HSG COVER & SEAL
19	53-0106			Blower Wheel
20	25-7823	312967		Clamp, Blower Housing
21	25-7812	25-7855		Ring, Retaining
22	25-2134	W10116760		Screw
"	25-7807	33002917		Screw, No.10-16
"	53-1024		Not Available	BLOWER COVER
"	53-1026			Guide, Vane Inlet
23	53-1107			Thermostat, Control
24	25-2134	W10116760		Screw
"	53-0170		Not Available	THERMOSTAT, LO-LIMIT (120/110)
25	53-0152	53-1580		Receptacle Assembly
26	53-0570	A3167501		Lamp Oven, Int.
"	25-3457			Screw, Sems
27	53-0174			Lens, Bulb
28	LA-1006			Glide Kit, Tumbler
"	25-3562	3195558		Nut
29	53-0182	31001356		Pad, Glide
30	53-0183	31001469		Glide, Tumbler
"	LA-1007	12002126		Reinforcement Brace/Glide Kit
31	25-7101	3351614		Screw, Gearcase Cover Mounting
"	53-0198			Support Assembly
32	53-0665	12002126		Reinforcement Brace/Glide Kit
33	25-7813			Spacer
34	25-7814			Washer
35	25-7574	25-7854		Ring, Retaining
36	53-0184	31001356		Pad, Glide
37	53-0185	31001470		Glide, Tumbler
"	LA-1008			Rr Roller Kit
38	25-7101	3351614		Screw, Gearcase Cover Mounting
"	53-0197			Support Assembly-Cylinder Rear
39	53-0163	31001096		Roller
40	25-7813			Spacer
41	25-7814			Washer
42	25-7574	25-7854		Ring, Retaining