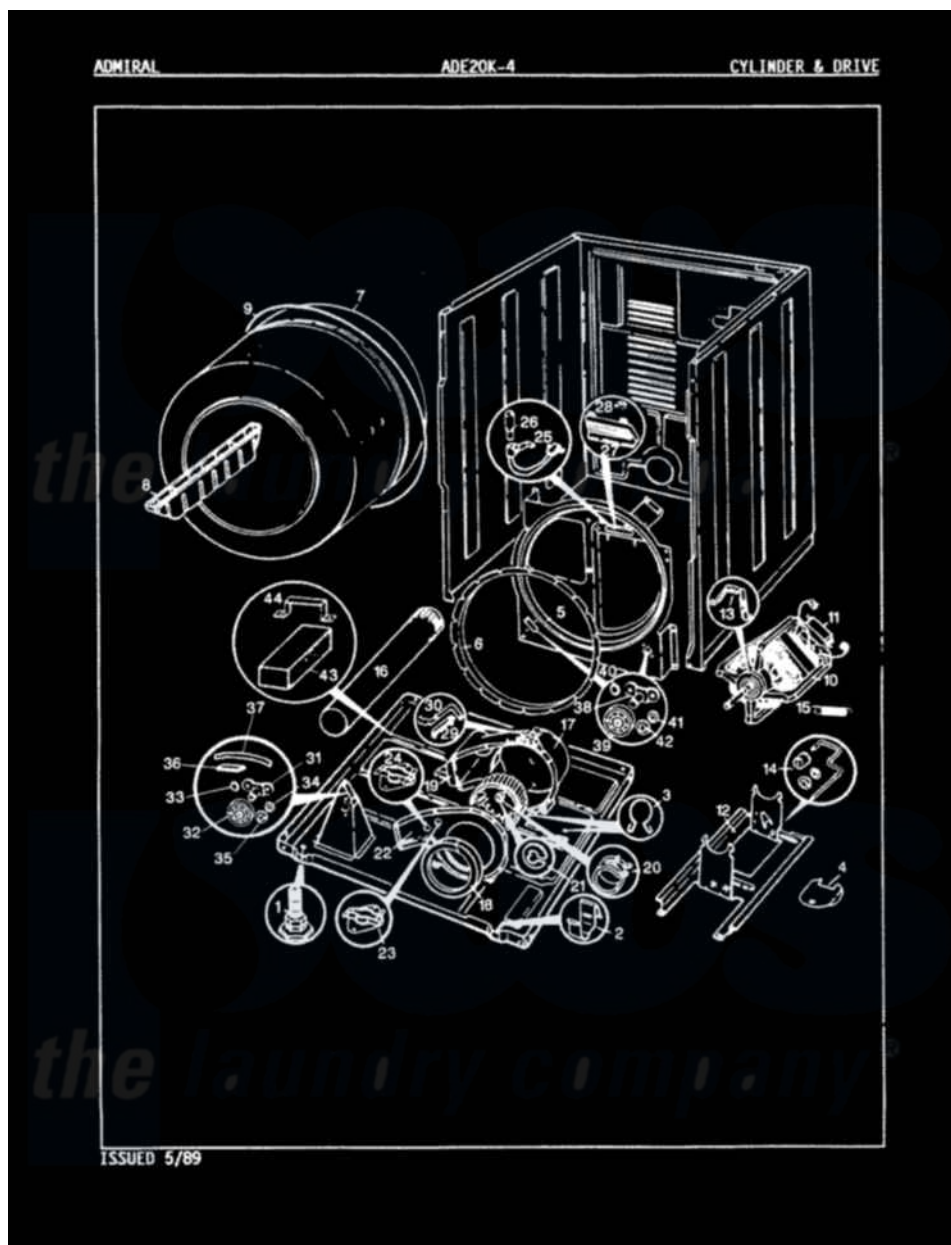


# Admiral ADE20K4W 02 - CYLINDER & DRIVE (REV. A)



Admiral Residential Admiral ADE20K4W Dryer Parts Parts Diagram 02 - CYLINDER & DRIVE (REV. A)

[Click on the part number to view part](#)

Item	Original Part Number	Replaced By	Status	Part Description
1	63-5519		Not Available	LEG, LEVELING
2	<a href="#">53-0120</a>			Clip, Front Panel
3	25-7027	<a href="#">16515</a>		Clip
4	53-0153		Not Available	SHIELD, WIRING
"	25-7741	<a href="#">W10116760</a>		Screw
5	Y02100001	<a href="#">LA-1054</a>		Dryer Bulkhead Kit
"	25-7733	<a href="#">681414</a>		Screw, 10AB X 1/2
6	53-0282	<a href="#">31001637</a>		Seal Assembly, Cylinder Front
7	<a href="#">53-1250</a>			Cylinder
8	Y02100002		Not Available	BAFFLE (WHT)
"	25-7759	<a href="#">3196164</a>		Screw
9	53-1080	<a href="#">341241</a>		Belt
"	<a href="#">LA-1004</a>			Motor Mtg. Kit
10	53-0189	<a href="#">LA-1004</a>		Motor Mtg. Kit
11	53-0936	<a href="#">LA-1004</a>		Motor Mtg. Kit
12	53-0105		Not Available	BRACKET

"	25-7811		Not Available	SCREW
13	53-0214	<a href="#">660658</a>		Clamp, Motor Mounting 343481 685441
14	53-0199	<a href="#">53-2366</a>		Idler Arm
15	53-0207		Not Available	IDLER SPRING
16	<a href="#">53-0134</a>			Duct, Exhaust
17	53-0774		Not Available	BLOWER HOUSING
18	53-0203	<a href="#">12001324</a>		Duct Kit, Collector
"	53-1103		Not Available	BLOWER HSG COVER & SEAL
19	<a href="#">53-0106</a>			Blower Wheel
20	25-7823	<a href="#">312967</a>		Clamp, Blower Housing
21	25-7812	<a href="#">25-7855</a>		Ring, Retaining
22	25-2134	<a href="#">W10116760</a>		Screw
"	25-7807	<a href="#">33002917</a>		Screw, No.10-16
"	53-1024		Not Available	BLOWER COVER
"	<a href="#">53-1026</a>			Guide, Vane Inlet
23	<a href="#">53-1107</a>			Thermostat, Control
24	25-2134	<a href="#">W10116760</a>		Screw
"	53-0170		Not Available	THERMOSTAT, LO-LIMIT (120/110)
25	53-0152	<a href="#">53-1580</a>		Receptacle Assembly
26	53-0570	<a href="#">A3167501</a>		Lamp Oven, Int.
"	<a href="#">25-3457</a>			Screw, Sems
27	<a href="#">53-0174</a>			Lens, Bulb
28	<a href="#">LA-1006</a>			Glide Kit, Tumbler
"	25-3562	<a href="#">3195558</a>		Nut
29	53-0182	<a href="#">31001356</a>		Pad, Glide
30	53-0183	<a href="#">31001469</a>		Glide, Tumbler
"	LA-1007	<a href="#">12002126</a>		Reinforcement Brace/Glide Kit
31	25-7101	<a href="#">3351614</a>		Screw, Gearcase Cover Mounting
"	<a href="#">53-0198</a>			Support Assembly
32	53-0665	<a href="#">12002126</a>		Reinforcement Brace/Glide Kit
33	<a href="#">25-7813</a>			Spacer
34	<a href="#">25-7814</a>			Washer
35	25-7574	<a href="#">25-7854</a>		Ring, Retaining
36	53-0184	<a href="#">31001356</a>		Pad, Glide
37	53-0185	<a href="#">31001470</a>		Glide, Tumbler
"	<a href="#">LA-1008</a>			Rr Roller Kit
38	25-7101	<a href="#">3351614</a>		Screw, Gearcase Cover Mounting
"	<a href="#">53-0197</a>			Support Assembly-Cylinder Rear
39	53-0163	<a href="#">31001096</a>		Roller
40	<a href="#">25-7813</a>			Spacer
41	<a href="#">25-7814</a>			Washer
42	25-7574	<a href="#">25-7854</a>		Ring, Retaining