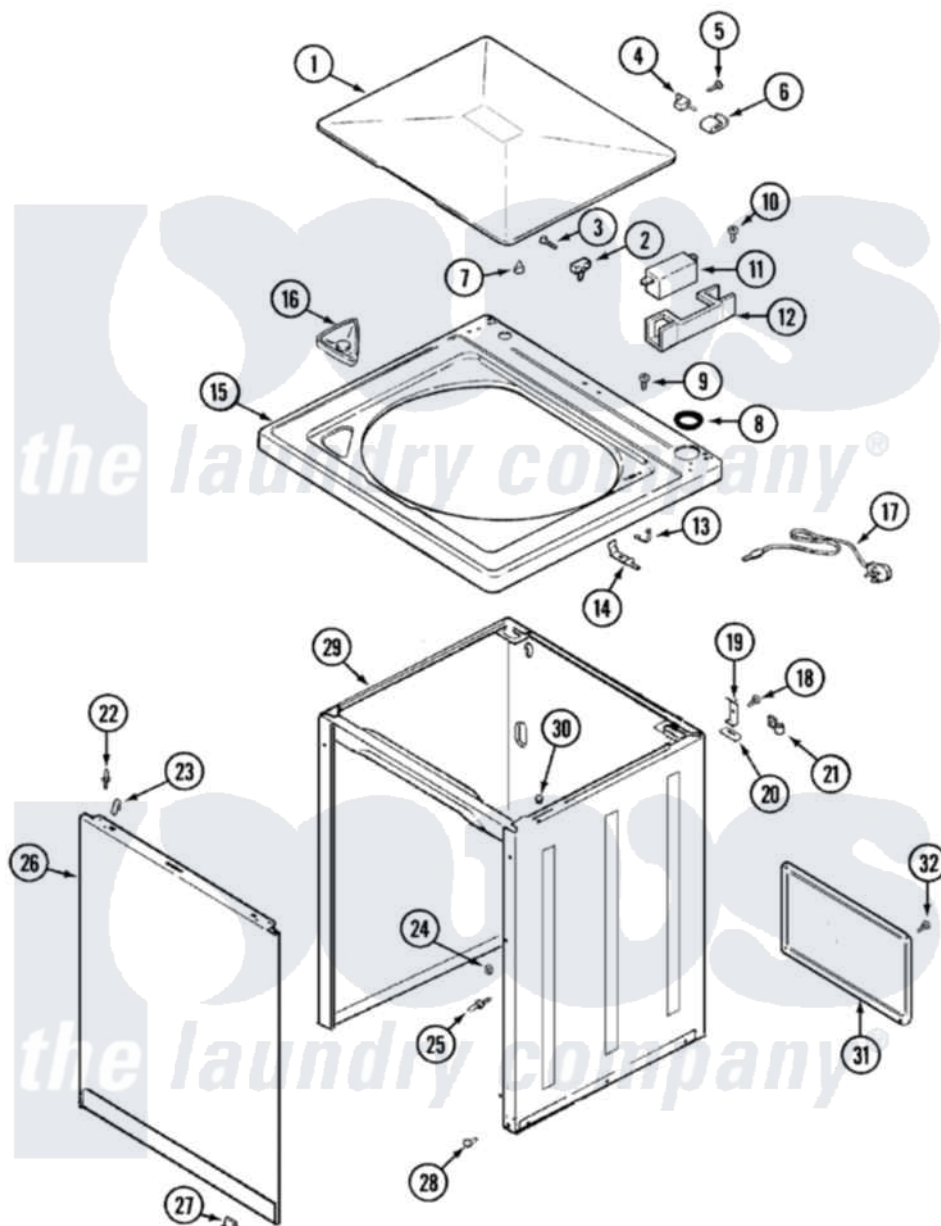


# Admiral LATA401AKE 04 - TOP



Admiral [Residential Admiral LATA401AKE Washer Parts](#) Parts Diagram 04 - TOP  
 Click on the part number to view part

Item	Original Part Number	Replaced By	Status	Part Description
1	<a href="#">35-2026</a>			Lid
2	<a href="#">25-7436</a>			Nylite Washer
"	<a href="#">43-0057</a>			Actuator, Door Switch
3	<a href="#">25-7438</a>			Screw
4	<a href="#">35-2045</a>			Pin, Hinge
5	<a href="#">25-7893</a>			Screw
6	<a href="#">35-2044</a>			Hinge, Lid
7	<a href="#">35-0581</a>			Bumper, Door
8	<a href="#">35-2063</a>			Bushing, Insulator
"	<a href="#">35-2064</a>			Bushing, Insulating
9	25-7463	<a href="#">7101P012-60</a>		Screw
10	25-7437	<a href="#">40040701</a>		Screw, Tapping No.6b-20
11	35-2904		Not Available	PAD, LID SWITCH
"	35-3382	<a href="#">12001187</a>		Kit, Lid Switch Assembly
12	35-2795	<a href="#">12001187</a>		Kit, Lid Switch Assembly
13	<a href="#">25-7878</a>			Clip

14	35-3076	<a href="#">12001187</a>	Kit, Lid Switch Assembly
15	<a href="#">35-2739</a>		Top, Cabinet
16	<a href="#">21001167</a>		Dispenser, Bleach
17	35-1011	Not Available	SERVICE CORD
"	<a href="#">35-1007</a>		Strain Relief
18	<a href="#">25-7893</a>		Screw
19	33-7450	<a href="#">35-2846</a>	Hinge, Cabinet Top
20	<a href="#">33-0930</a>		Pad, Top Hinge
21	25-7796	<a href="#">596669</a>	Clamp, Manifold
22	<a href="#">53-0643</a>		Pin, Locator
23	<a href="#">25-7220</a>		Clip, Cabinet Top
24	25-0224	<a href="#">3400029</a>	Nut, Adapter Plate
25	<a href="#">53-0643</a>		Pin, Locator
26	<a href="#">35-2084</a>		Panel, Front
27	<a href="#">53-0120</a>		Clip, Front Panel
28	<a href="#">33-2653</a>		Bumper, Cabinet
29	35-2106	<a href="#">21001871</a>	Cabinet
30	<a href="#">33-2653</a>		Bumper, Cabinet
31	35-2108	<a href="#">21001871</a>	Cabinet
32	25-7733	<a href="#">681414</a>	Screw, 10AB X 1/2

