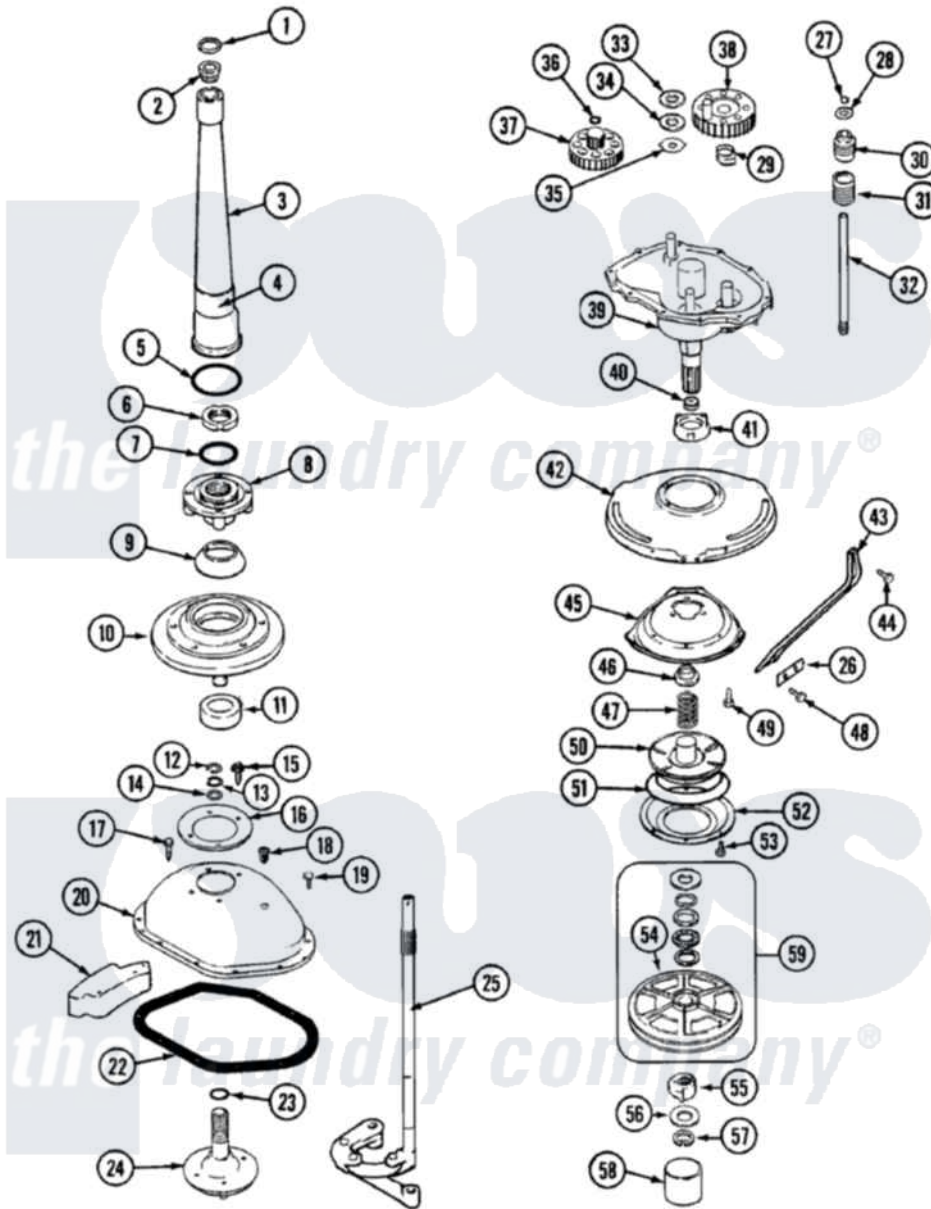


# Admiral LATA500AAL 05 - TRANSMISSION



Admiral [Residential Admiral LATA500AAL Washer Parts](#) Parts Diagram 05 - TRANSMISSION  
 Click on the part number to view part

Item	Original Part Number	Replaced By	Status	Part Description
1	<a href="#">25-7941</a>			"O" Ring, Agr Drive Shaft
2	35-2835	<a href="#">21001066</a>		Bearing, Centerpost
3	35-2792	<a href="#">21001401</a>		Center Pos
4	35-2983		Not Available	CENTERPOST ASSY.
"	35-3214	<a href="#">33-6790</a>		Bearing, Agitator
5	<a href="#">35-2906</a>			Seal, Centerpost Bottom
6	<a href="#">35-2791</a>			Nut, Spin Tube
7	<a href="#">25-7938</a>			"O" Ring, Basket Drive Hub
8	35-3647	<a href="#">W10219156</a>		Tub Seal
9	<a href="#">35-2974</a>			Tub Seal/Hub Assembly
10	35-2716	<a href="#">12001561</a>		Bearing And Seal Housing Assembly
11	<a href="#">35-2205</a>			Bearing, Spin
"	35-2972	<a href="#">12001561</a>		Bearing And Seal Housing Assembly
12	25-7949		Not Available	RING, RETAINING (AG. SHAFT)

13	<a href="#">25-7057</a>		Washer, Flat
14	25-7051	<a href="#">25-7057</a>	Washer, Flat
15	25-7895	<a href="#">21001858</a>	Screw 5/16-18 x 1/2
16	<a href="#">35-2981</a>		Cover, Reinforcement
17	25-7895	<a href="#">21001858</a>	Screw 5/16-18 x 1/2
18	<a href="#">35-2621</a>		Plug, Oil Fill
19	25-7926	<a href="#">25-7758</a>	Screw
20	35-2620	Not Available	COVER, TRANSMISSION
"	35-2971	Not Available	TRANSMISSION COVER ASSY.
21	<a href="#">35-3706</a>		Counterweight
"	35-2903	Not Available	COUNTERWEIGHT
"	35-2903	Not Available	COUNTERWEIGHT
22	35-0542	Not Available	GASKET, TRANSMISSION HOUSING
23	25-7722	<a href="#">33-4293N</a>	Gasket Kit
24	<a href="#">35-3702</a>		Drive Tube Assembly
25	<a href="#">35-3804</a>		Linkage Assembly
26	LA-2176	Not Available	CLUTCH ASSY.
"	LA-2176	Not Available	CLUTCH ASSY.
"	W10124350	Not Available	NOT REQUIRED PART OR SEE NOTE CLUTCH ASSY. (NOT REQUIRED)
27	<a href="#">25-7847</a>		Ring, Retaining
28	25-7415	Not Available	WASHER, FLAT
29	W10124350	Not Available	NOT REQUIRED PART OR SEE NOTE SPRING, ANTI-BACKUP (NOT REQUIRED)
"	35-2967	<a href="#">33-6463</a>	Spring
"	35-2967	<a href="#">33-6463</a>	Spring
30	<a href="#">35-2001</a>		Pinion, Drive
31	35-3608	Not Available	SPRING, CLUTCH
32	<a href="#">35-2692</a>		Drive Shaft And Hub Assembly
33	25-7274	Not Available	WASHER, STEEL
34	35-2817	<a href="#">35-3825</a>	Washer, Nylon
35	<a href="#">35-2070</a>		Washer, Steel W/Tabs
36	<a href="#">25-7933</a>		Ring, Retaining
37	<a href="#">35-2527</a>		Gear, Cluster
38	21001067	Not Available	GEAR, CRANK
"	35-2631	Not Available	GEAR, CRANK
"	35-2631	Not Available	GEAR, CRANK
39	35-2812	Not Available	HOUSING, TRANSMISSION
40	35-2010	<a href="#">207843</a>	Lip Seal Repair Kit
41	35-2730	<a href="#">12001562</a>	Bearing Assembly
"	35-2973	<a href="#">35-6680</a>	Transmission
42	35-3724	<a href="#">21001518</a>	Support, Tub
43	35-2799	Not Available	BRACE, TUB
44	25-7930	<a href="#">21001858</a>	Screw 5/16-18 x 1/2
45	35-3698	Not Available	HOUSING, SUSPENSION
46	<a href="#">35-2017</a>		Retainer, Brake Spring
47	35-2112	<a href="#">21001910</a>	Spring, Brake
48	25-7930	<a href="#">21001858</a>	Screw 5/16-18 x 1/2
49	25-7895	<a href="#">21001858</a>	Screw 5/16-18 x 1/2
50	35-2948	<a href="#">35-6714</a>	Brake Roto

51	35-3788	<a href="#">21002026</a>		Snubber
52	35-2018	<a href="#">35-6918</a>		Stator, Brake
53	25-7900	<a href="#">21001065</a>		Screw, No.10-24 x .50 Hxnibhd
54	35-3829	<a href="#">12002213</a>		Thrust Bearing Kit
55	35-2439	<a href="#">12002213</a>		Thrust Bearing Kit
56	<a href="#">35-2132</a>			Washer, 1.25ODX.530IDX.032
"	<a href="#">35-2082</a>			Washer, 1.25ODX.530IDX.062
57	<a href="#">25-7854</a>			Ring, Retaining
58	<a href="#">35-2007</a>			Cap, Dust
59	12500036	<a href="#">12002213</a>		Thrust Bearing Kit
60	35-2025		Not Available	PLATE, REINFORCEMENT
61	35-3384		Not Available	STOP, ANTIBACKUP CAM
"	W10124350		Not Available	NOT REQUIRED PART OR SEE NOTE
62	35-3748	<a href="#">35-6680</a>		Transmission
"	21001091	<a href="#">35-6680</a>		Transmission
"	35-3748	<a href="#">35-6680</a>		Transmission

