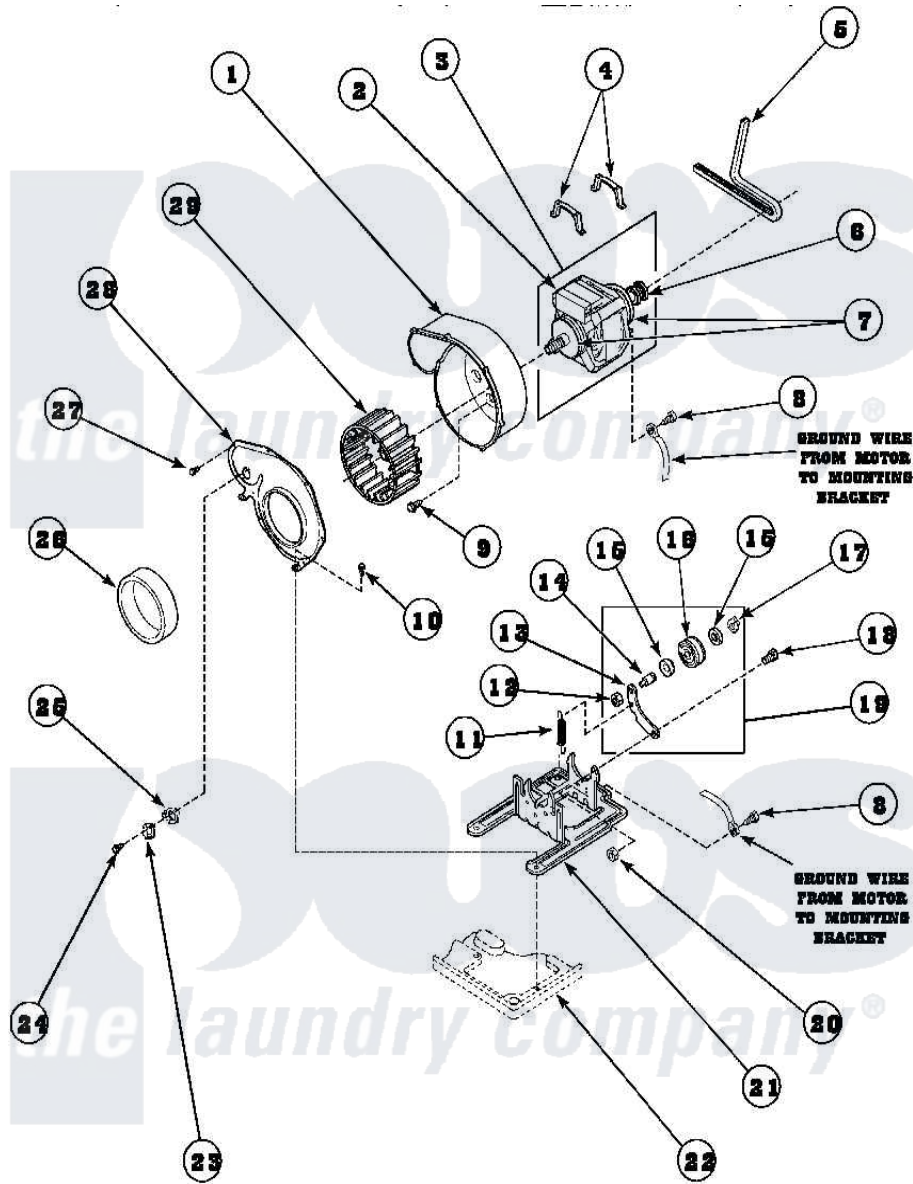


Amana AEM427W2 (BOM: PAEM427W2) 14 - MOTOR, EXHAUST FAN AND BELT



Amana Residential Amana AEM427W2 (BOM: PAEM427W2) Dryer Parts Parts Diagram 14 - MOTOR, EXHAUST FAN AND BELT

Click on the part number to view part

| Item | Original Part Number | Replaced By | Status | Part Description |
|------|------------------------|--------------------------|---------------|---|
| 1 | 56020 | | | Housing, Blower |
| 2 | 501218 | | Not Available | MOTOR SWITCH (DOES NOT INCLUDE THERMAL PROT |
| 3 | 501211 | 2200376 | | Motor |
| 4 | Y58047 | 660658 | | Clamp, Motor Mounting 343481 685441 |
| 5 | 59174 | 40111201 | | Belt, Cylinder |
| 6 | 500011 | | | Pulley, Motor |
| 7 | 590P3 | | | Motor Hub Ring Kit |
| 8 | 20530 | | | Screw, 10-24 x 3/8 Hex |
| 9 | 501668 | 503688 | | Screw, 10B-16 X .34 I |
| 10 | 33562 | 27001200 | | Screw |
| 11 | 56076 | | | Spring, Idler |
| 12 | 56156 | 358160 | | Nut |
| 13 | 500910 | 37001144 | | Assembly- Idler |

| | | | |
|----|------------------------|--------------------------|---------------------------------------|
| 14 | 56461 | | Shaft |
| 15 | 52549 | | Washer, 501 ID X3/4 Odx |
| 16 | Y54414 | | Assembly, Wheel And Bearing |
| 17 | 23748 | | Ring, Retaining |
| 18 | 500824 | | Screw, 1/4-20 Unc Hex |
| 19 | 500269 | 37001287 | Assembly, Idler Lever/Shaft/Pulley |
| 20 | 52566 | 27001225 | Nut, Jam Mid Lock 1/4-20 |
| 21 | 500822 | 503613 | Mount, Motor |
| 22 | 500070 | | Base, Dryer |
| 23 | Y61372 | | Thermostat |
| " | 503551 | | Thermostat, Cycling |
| " | 56410 | | Thermostat |
| 24 | 23222 | 3177991 | Screw |
| " | Y33561 | 489464 | Screw |
| 25 | 61401 | 61623 | Thermostat, Heater-BR |
| 26 | 500313 | | Seal, Blower Housing |
| 27 | 31260 | | Screw, No.8 X 3/8 Ind H |
| 28 | 500078 | 511969P | Kit Blower Housing And Cover |
| 29 | 56000 | 510139P | Assembly Blower Fan Package |

