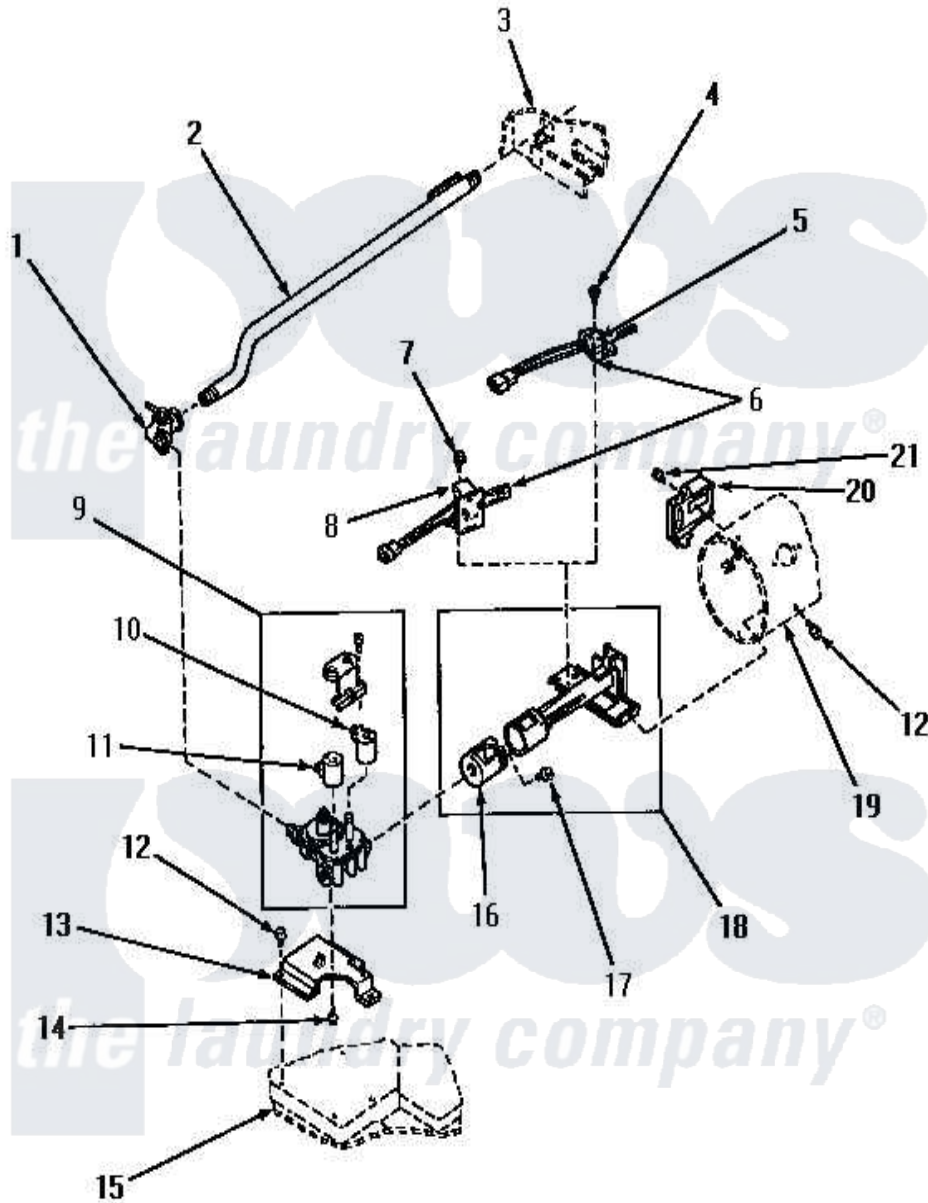


Amana AGM659 05 - GAS VALVE AND IGNITER



Amana [Residential Amana AGM659 Dryer Parts](#) Parts Diagram 05 - GAS VALVE AND IGNITER
 Click on the part number to view part

Item	Original Part Number	Replaced By	Status	Part Description
1	Y56229	510205		Valve-Elbo
2	58911			Assembly, Lead-In Pipe
3	Y00000000		Not Available	SEE NOTE CABINET -- (SEE PAGE 10, KEY 13)
4	51782		Not Available	SCREW, 6B-20X5/16
5	Y00000000		Not Available	SEE NOTE CARBORUNDUM IGNITER AND BRACKET
6	Y00000000		Not Available	SEE NOTE IGNITER, SIX PACK -- (USE TO RETROFIT AGM639, AGM659)
"	55438	4392003		Ignitor
7	56693			Screw, No.6-20 x. 44/.41 In
8	Y00000000		Not Available	SEE NOTE NORTON IGNITER AND BRACKET
9	58804			Assembly, Valve-Gas-Single-
10	58804B	694540		Coil, 60 Hz
11	58804A	306106		Coil, Holding And Booster--W
12	56264	27001200		Screw

13	58912	500821		Bracket, Mounting-Gas
14	56124	3370225		Screw
15	Y00000000		Not Available	SEE NOTE BASE -- (SEE PAGE 10, KEY 14)
16	53007	53-007		Receptacle
17	51356		Not Available	SCREW,6-32 X 5/16 RD H
18	Y56234	37001304		Burner Ign
19	Y00000000		Not Available	SEE NOTE BURNER HOUSING -- (SEE PAGE 7)
20	Y56231	338906		Radiant, Sensor
NI	60514		Not Available	PLATE,CONVERSION
"	58768	402P3		Kit, Conversion-NG
"	58719	402P3		Kit, Conversion-NG
"	60516			Sticker, Valve Converted
"	402P3			Kit, Conversion-NG
"	60520		Not Available	STICKER,LP GAS
"	60517			Valve Converted To LP Gas Stic
"	60515		Not Available	PLATE,CONVERSION
"	58755	401P3		Kit, Conversion-LP
"	58754	401P3		Kit, Conversion-LP
"	401P3			Kit, Conversion-LP
"	60521		Not Available	STICKER,NG OR MIXED GAS

