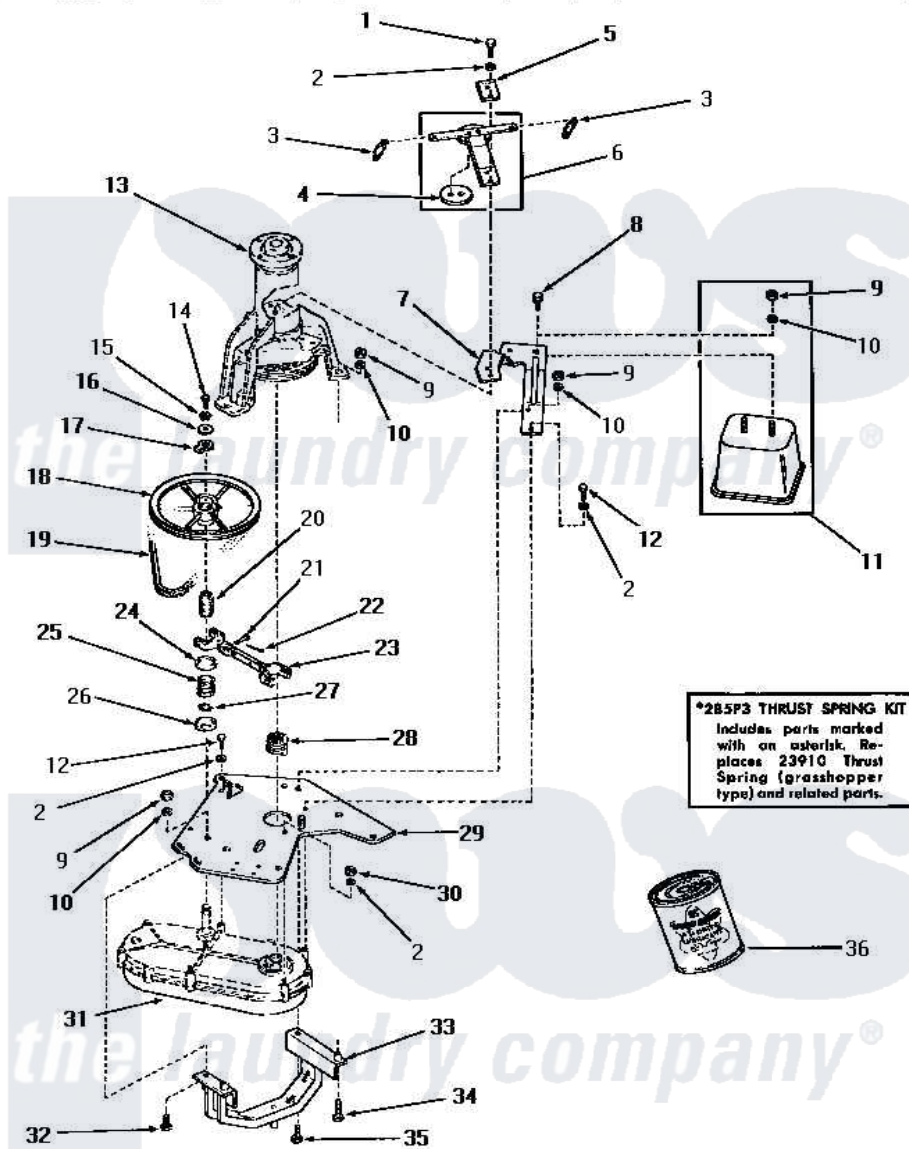


Amana DA6070 13 - COUNTERBALANCE WEIGHT, BRKT & MTG PLATE



COUNTERBALANCE WEIGHT, BRACKET AND MOUNTING PLATE

Amana [Residential Amana DA6070 Washer Parts](#) Parts Diagram 13 - COUNTERBALANCE WEIGHT, BRKT & MTG PLATE

Click on the part number to view part

| Item | Original Part Number | Replaced By | Status | Part Description |
|------|-----------------------|-----------------------|---------------|--------------------------|
| 1 | 24233 | | Not Available | SCREW,CAP-1/4-20 X 3/4 |
| 2 | 03189 | | | LoCkwasher, 1/4 Std-C P |
| 3 | 23632 | | | Spring |
| 4 | 20453 | | Not Available | DISC, FRICTION |
| 5 | 22614 | | | Plate, Support |
| 6 | 20168 | | | Assembly, Snubber |
| 7 | 25139 | | Not Available | BRACKET |
| 8 | 23928 | | Not Available | CAP SCREW AND LOCKWASHER |
| 9 | 20274 | 62739 | | Nut, Lock |
| 10 | 20277 | | | Lockwasher, 3/8 Std X 3 |
| 11 | 25230 | | Not Available | COUNTERBALANCE WEIGHT |
| 12 | 20264 | | | Screw, 1/4-20 X 2 HeX H |
| 13 | Y00000000 | | Not Available | SEE NOTE MAIN BEARING |
| 14 | 02422 | | | Screw, 1/4-20 X 1/2 HeX |
| 15 | 02431 | | | Lockwasher, 1/4 Ext Shk |

| | | | |
|----|-----------------------|--------------------------|--------------------------------|
| 16 | 23716 | Not Available | WASHER |
| 17 | 23643 | | Pulley Stop |
| 18 | 23773 | Not Available | ASSY,PULLEY-TRANSMISSI |
| 19 | 23758 | | Belt |
| 20 | 23644 | | Hub |
| 21 | 23718 | Not Available | PIN,SHIFTER |
| 22 | 20248 | | Pin, Cotter |
| 23 | 23732 | | Assembly, Shifter Fork |
| 24 | 26610 | | Retainer, Spring-Upper |
| 25 | 26609 | | Spring |
| 26 | 26611 | Not Available | RETAINER,SPRING-LOWER |
| 27 | 23751 | | Ring, Retaining |
| 28 | 23647 | | Jaw |
| 29 | 24749 | Not Available | MOUNTING PLATE |
| 30 | 20275 | 27001225 | Nut, Jam Mid Lock 1/4-20 |
| 31 | Y00000000 | Not Available | SEE NOTE TRANSMISSION ASSEMBLY |
| 32 | 22687 | Not Available | SCREW |
| 33 | 22702 | Not Available | ASSY,YOKE & SLEEVE |
| 34 | Y22688 | Not Available | SCREW,CAP-3/8-16X1-1/4 |
| 35 | 20255 | Not Available | SCREW,3/8-16 X 1 HEX H |
| NI | 03200 | | A-D Drive Lubricant |
| " | 285P3 | 23911 | Kit Spring |

