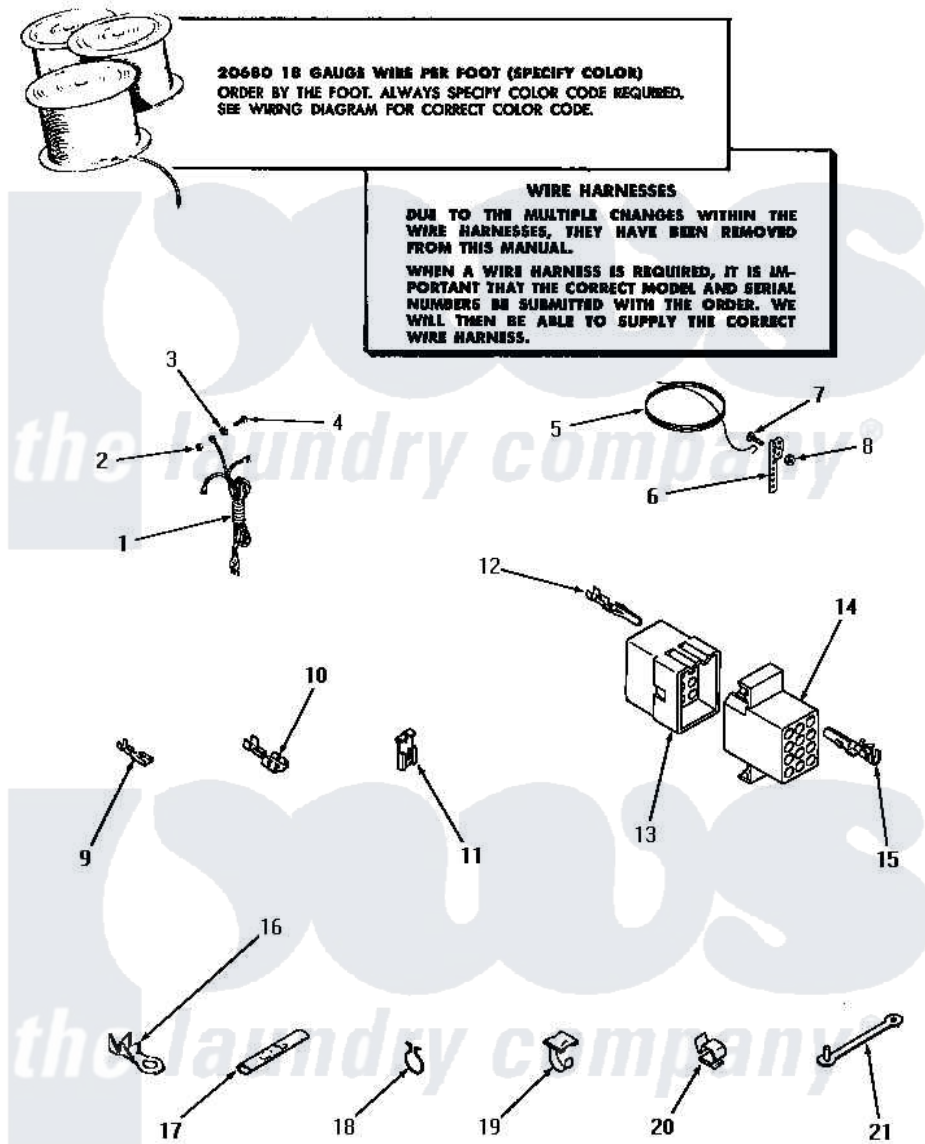


Amana DA6120 20 - POWER CORD, WIRE & TERMINALS



**20680 18 GAUGE WIRE PER FOOT (SPECIFY COLOR)
ORDER BY THE FOOT. ALWAYS SPECIFY COLOR CODE REQUIRED.
SEE WIRING DIAGRAM FOR CORRECT COLOR CODE.**

WIRE HARNESSES
DUE TO THE MULTIPLE CHANGES WITHIN THE WIRE HARNESSSES, THEY HAVE BEEN REMOVED FROM THIS MANUAL.
WHEN A WIRE HARNESS IS REQUIRED, IT IS IMPORTANT THAT THE CORRECT MODEL AND SERIAL NUMBERS BE SUBMITTED WITH THE ORDER. WE WILL THEN BE ABLE TO SUPPLY THE CORRECT WIRE HARNESS.

POWER CORD, WIRE AND TERMINALS

Amana [Residential Amana DA6120 Washer Parts](#) Parts Diagram 20 - POWER CORD, WIRE & TERMINALS
Click on the part number to view part

Item	Original Part Number	Replaced By	Status	Part Description
1	22660		Not Available	POWER CORD AND PLUG
2	03673		Not Available	NUT
3	03815			Lockwasher, No.10 Ext Shk
4	20267			Screw, 10-24 X 3/8 Round
5	Y21429		Not Available	GROUND WIRE
6	21430		Not Available	STRAP,GROUND
7	21431		Not Available	ROUND HEAD SCREW
8	Y20276		Not Available	NUT
9	00112			Terminal, Spade-3/16 Fe
10	Y00119		Not Available	SPADE TERMINAL(18 GAUGE) (1/4 INCH-(1) 18 GAUGE WIRE)
11	Y00120			Terminal, Flag-1/4 Fema
12	Y00116			Terminal, Pin-Male
13	23041			Plug, 6 Circuit
"	23040			Plug-3 Circuit
"	23033			Plug, 9 Circuit

"	23035	Not Available	PLUG,12 CIRCUIT
"	23037		Plug, 15 Circuit
14	23038	Not Available	RECEPTACLE,15 CIRCUIT
"	23036		Receptacle, 12 Circuit
"	23039	697780	Receptacle,
"	23042	Not Available	RECEPTACLE
"	Y23034	26163	Receptacle, 9 Circuit
15	Y00117	5011-XX	093 Female Socket
16	00110		No.10 18 Gauge Wire
17	21091	Not Available	CONNECTOR TWO 1/4 INCH MALE
18	51291		Clip, Wire
19	21793	Not Available	CABLE CLIP
20	21036		Clip, Cable
21	22837	Not Available	STRAP,WIRE

