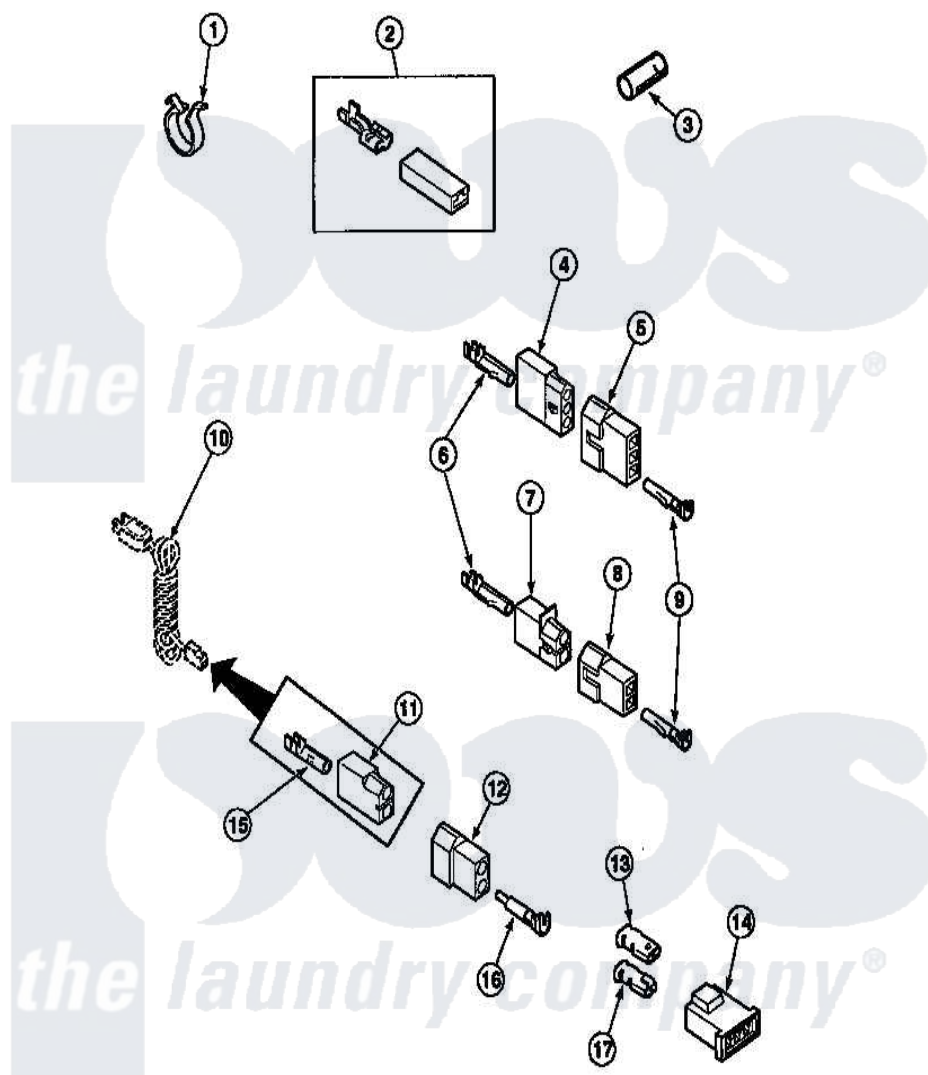


Amana LG8101LB (BOM: PLG8101LB) 20 - TERMINALS



Amana [Residential Amana LG8101LB \(BOM: PLG8101LB\) Dryer Parts](#) Parts Diagram 20 - TERMINALS

[Click on the part number to view part](#)

| Item | Original Part Number | Replaced By | Status | Part Description |
|------|------------------------|--------------------------|---------------|---|
| 1 | 61510 | 504034 | | Clip, Wire |
| 3 | Y21365 | 503670 | | Sleeve Insulator |
| 4 | 23039 | 697780 | | Receptacle, |
| 5 | 23040 | | | Plug-3 Circuit |
| 6 | Y00117 | 5011-XX | | 093 Female Socket |
| 7 | 56451 | | | Receptacle, 2 Circuit |
| 9 | Y00116 | | | Terminal, Pin-Male |
| 10 | Y56222 | 27001142 | | Cord, Power |
| 11 | 56265 | | | Receptacle, 2 Circuit |
| 12 | 56266 | | | Plug |
| 13 | Y00189 | | | Terminal, Spade |
| 14 | 58800 | | Not Available | CONNECTOR-3 CIRCUIT (3 CIRCUIT CONNECTOR) |
| 15 | 00130 | | | Terminal, Pin-1/8 Femal |
| 16 | Y00127 | | | Terminal, Pin-1/8 Male |
| 17 | Y00190 | | | Connector-Receptacle |