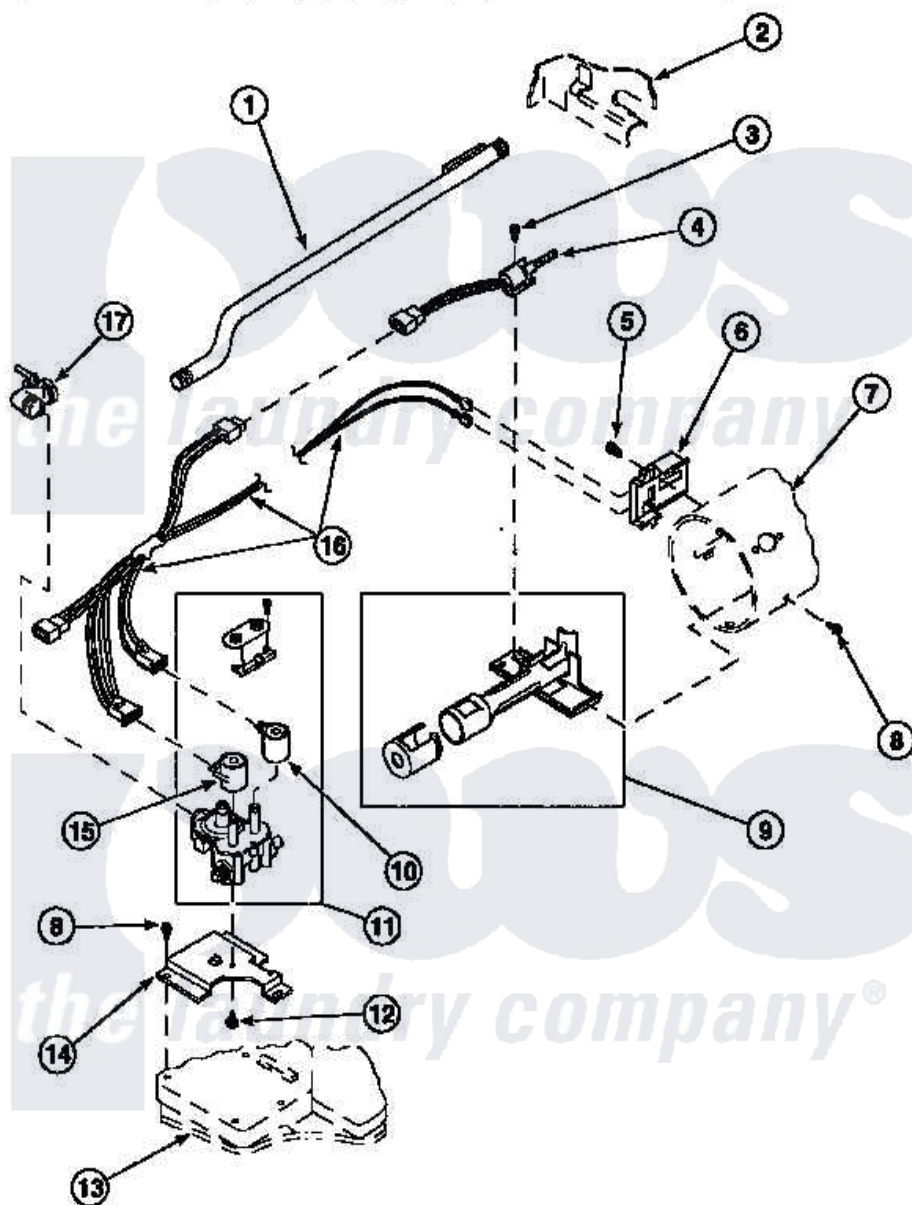


Amana LG8319W2 (BOM: PLG8319W2) 04 - GAS VALVE, IGNITER & GAS CONVERSION KITS



Amana Residential Amana LG8319W2 (BOM: PLG8319W2) Dryer Parts Parts Diagram 04 - GAS VALVE, IGNITER & GAS CONVERSION KITS

[Click on the part number to view part](#)

| Item | Original Part Number | Replaced By | Status | Part Description |
|------|------------------------|--------------------------|---------------|--------------------------------|
| 1 | 500647 | 510204 | | Pipe |
| 2 | 500001P | | Not Available | (ADD LETTER BEFORE "P" IN PART |
| 3 | 51782 | | Not Available | SCREW, 6B-20X5/16 |
| 4 | 60868 | 37001308 | | Ignitor |
| 5 | 23222 | 3177991 | | Screw |
| 6 | Y56231 | 338906 | | Radiant, Sensor |
| 7 | 61974 | | Not Available | BURNER HOUSING |
| 8 | 501668 | 503688 | | Screw, 10B-16 X .34 I |
| 9 | Y56234 | 37001304 | | Burner Ign |
| 10 | 58804B | 694540 | | Coil, 60 Hz |
| 11 | 58804 | | | Assembly, Valve-Gas-Single- |
| 12 | 56124 | 3370225 | | Screw |
| 13 | 500070 | | | Base, Dryer |
| 14 | 500821 | | | Bracket, Mounting-Gas |

| | | | |
|----|-----------------------|--------------------------|------------------------------|
| 15 | 58804A | 306106 | Coil, Holding And Booster--W |
| 16 | 60641 | 37001007 | Harness, Wire |
| 17 | Y56229 | 510205 | Valve-Elbo |
| NI | Y502229 | Not Available | ASSY, WIRE HARNESS |
| " | 402P3 | | Kit, Conversion-NG |

