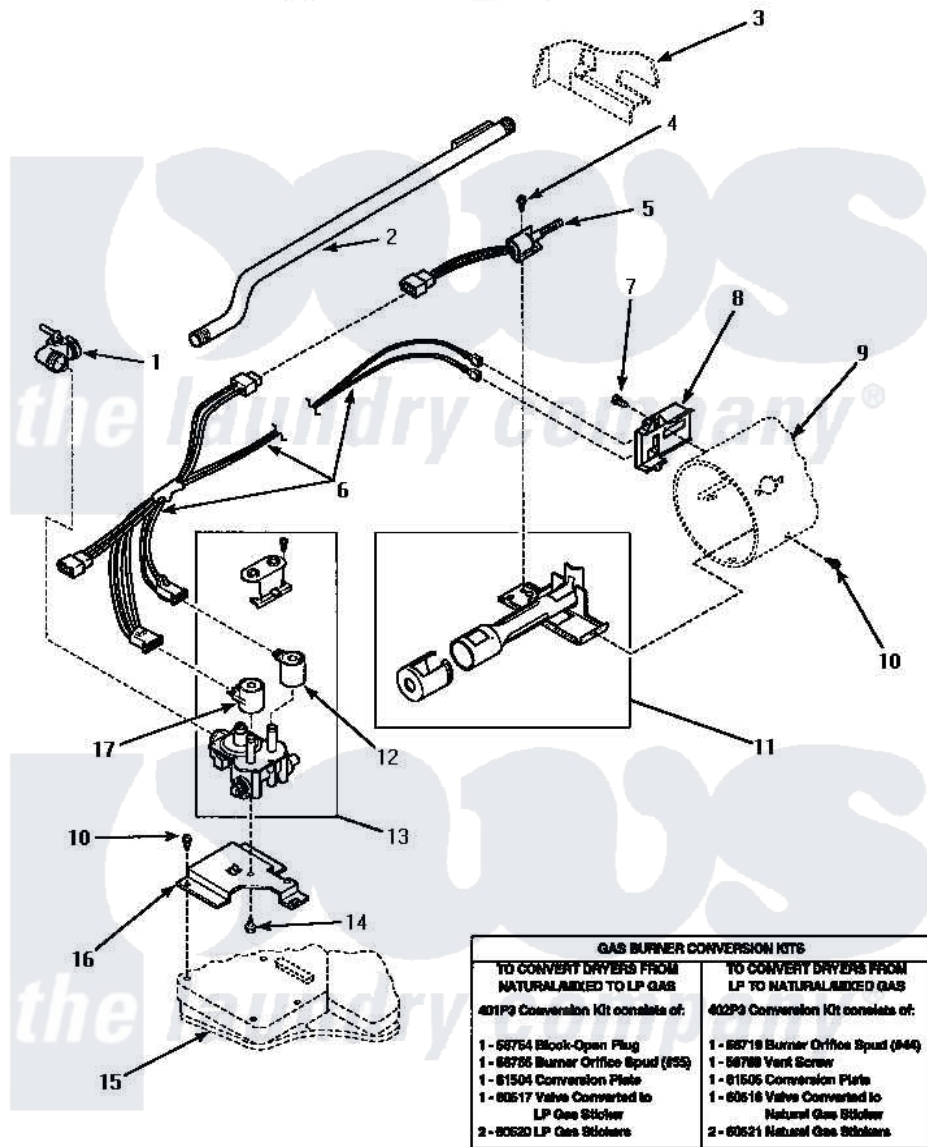


Amana LG8329W (BOM: PLG8329W) 05 - GAS VALVE, IGNITER & GAS CONVERSION KITS



GAS VALVE, IGNITER AND GAS CONVERSION KITS (Gas Model Dryers)

Amana [Residential Amana LG8329W \(BOM: PLG8329W\) Dryer Parts](#) Parts Diagram 05 - GAS VALVE, IGNITER & GAS CONVERSION KITS

[Click on the part number to view part](#)

Item	Original Part Number	Replaced By	Status	Part Description
1	Y56229	510205		Valve-Elbo
2	500647	510204		Pipe
3	Y00000000		Not Available	SEE NOTE CABINET
4	51782		Not Available	SCREW, 6B-20X5/16
5	60868	37001308		Ignitor
6	60641	37001007		Harness, Wire
7	23222	3177991		Screw
8	Y56231	338906		Radiant, Sensor
9	Y00000000		Not Available	SEE NOTE BURNER HOUSING
10	501668	503688		Screw, 10B-16 X .34 I
11	Y56234	37001304		Burner Ign
12	58804B	694540		Coil, 60 Hz
13	58804			Assembly, Valve-Gas-Single-
14	56124	3370225		Screw

15	Y00000000	Not Available	SEE NOTE BASE
16	50821		Bracket, Mounting-Gas
17	58804A	306106	Coil, Holding And Booster--W
NI	58768	402P3	Kit, Conversion-NG
"	58754	401P3	Kit, Conversion-LP
"	58719	402P3	Kit, Conversion-NG
"	60521	Not Available	STICKER,NG OR MIXED GAS
"	60516		Sticker, Valve Converted
"	60520	Not Available	STICKER,LP GAS
"	58755	401P3	Kit, Conversion-LP
"	61505	Not Available	CONVERSION PLATE
"	401P3		Kit, Conversion-LP
"	402P3		Kit, Conversion-NG
"	61504		Conversion Plate
"	60517		Valve Converted To LP Gas Stic

