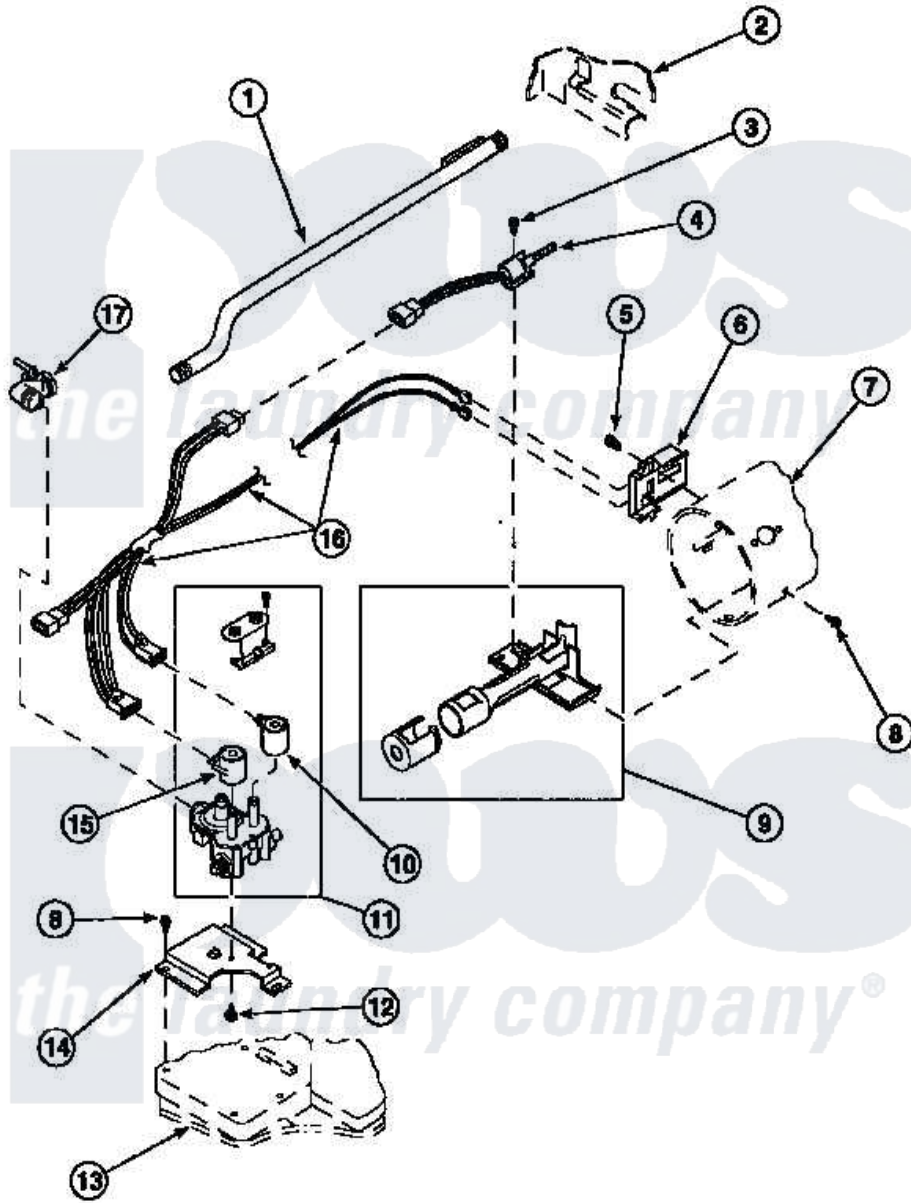


# Amana LG9209L2 (BOM: PLG9209L2) 04 - GAS VALVE, IGNITER & GAS CONVERSION KITS



Amana Residential Amana LG9209L2 (BOM: PLG9209L2) Dryer Parts Parts Diagram 04 - GAS VALVE, IGNITER & GAS CONVERSION KITS  
 Click on the part number to view part

Item	Original Part Number	Replaced By	Status	Part Description
1	500647	<a href="#">510204</a>		Pipe
2	500001P		Not Available	(ADD LETTER BEFORE "P" IN PART
3	51782		Not Available	SCREW, 6B-20X5/16
4	60868	<a href="#">37001308</a>		Ignitor
5	23222	<a href="#">3177991</a>		Screw
6	Y56231	<a href="#">338906</a>		Radiant, Sensor
7	61974		Not Available	BURNER HOUSING
8	501668	<a href="#">503688</a>		Screw, 10B-16 X .34 I
9	Y56234	<a href="#">37001304</a>		Burner Ign
10	58804B	<a href="#">694540</a>		Coil, 60 Hz
11	<a href="#">58804</a>			Assembly, Valve-Gas-Single-
12	56124	<a href="#">3370225</a>		Screw
13	<a href="#">500070</a>			Base, Dryer
14	<a href="#">500821</a>			Bracket, Mounting-Gas

15	58804A	<a href="#">306106</a>	Coil, Holding And Booster--W
16	60641	<a href="#">37001007</a>	Harness, Wire
17	Y56229	<a href="#">510205</a>	Valve-Elbo
NI	501336	Not Available	ASSY,WIRING HARNESS
"	500739	Not Available	ASSY,WIRE HARNESS
"	<a href="#">402P3</a>		Kit, Conversion-NG

