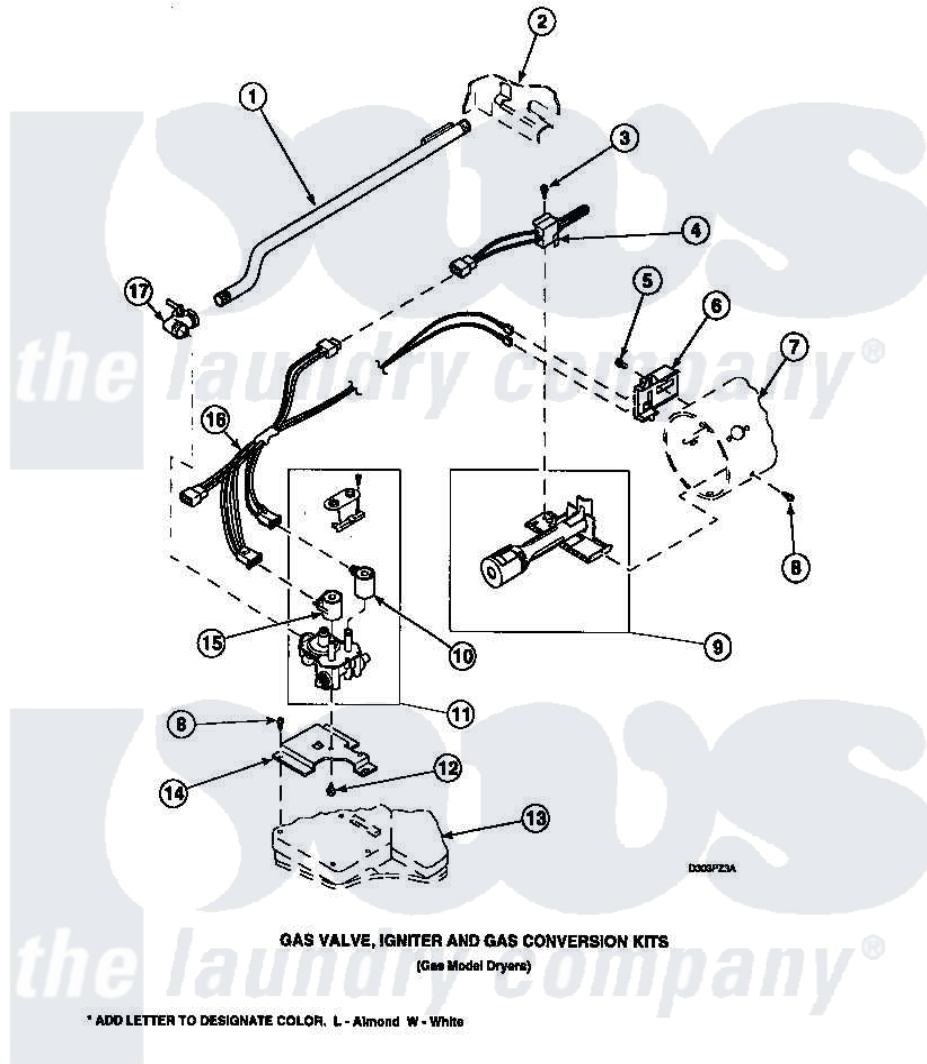


Amana LGS19AW (BOM: PLGS19AW) 05 - GAS VALVE, IGNITER & GAS CONVERSION KITS



RP320004 (504010)
Rev. 0

28

Amana [Residential Amana LGS19AW \(BOM: PLGS19AW\) Dryer Parts](#) Parts Diagram 05 - GAS VALVE, IGNITER & GAS CONVERSION KITS
Click on the part number to view part

Item	Original Part Number	Replaced By	Status	Part Description
1	500647	510204		Pipe
2	500001P		Not Available	(ADD LETTER BEFORE "P" IN PART
3	51782		Not Available	SCREW, 6B-20X5/16
4	503604	37001308		Ignitor
5	23222	3177991		Screw
6	Y56231	338906		Radiant, Sensor
7	Y61888	37001303		Duct- Comb
8	503688			Screw, 10B-16 X .34 I
9	Y56234	37001304		Burner Ign
10	58804B	694540		Coil, 60 Hz
11	Y504091			Assembly, Valve-Gas-Single
12	56124	3370225		Screw
13	500070			Base, Dryer
14	508821			Bracket, Mounting-Gas

15	58804A	306106	Coil, Holding And Booster--W
16	60641	37001007	Harness, Wire
NI	649P3	LPK1	LP Gas Con
"	650P3		Kit, Gas Burner Conversion
"	Y503906	Not Available	ASSY, WIRE HARNESS

