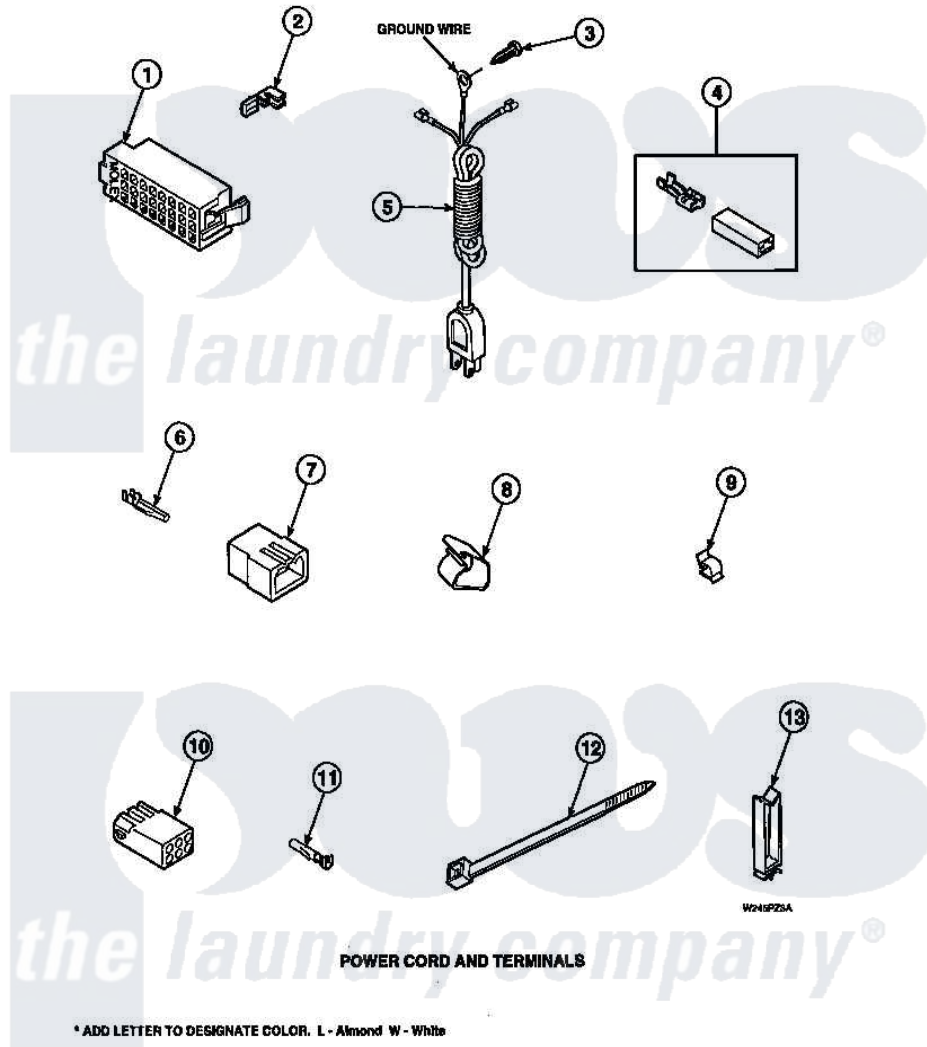


Amana LW6153WB (BOM: PLW6153WB A) 23 - POWER CORD AND TERMINALS



Amana Residential Amana LW6153WB (BOM: PLW6153WB A) Washer Parts Parts Diagram 23 - POWER CORD AND TERMINALS

Click on the part number to view part

| Item | Original Part Number | Replaced By | Status | Part Description |
|------|------------------------|-----------------------|---------------|------------------------------|
| 1 | 34123 | | | Housing, LH -24 Position |
| " | 32746 | | | Housing, RH-24 Positi |
| 2 | Y00188 | | | Molex Terminal |
| 3 | 52909 | | | Screw, 10B-16 X 1/2 HeX |
| 4 | 00234 | 00359 | | Terminal Ultra Pod 250 X032F |
| 5 | 34747 | | Not Available | CORD, LEAD-IN |
| 6 | Y00116 | | | Terminal, Pin-Male |
| 7 | 26302 | | Not Available | PLUG, 1 CIRCUIT |
| " | 23041 | | | Plug, 6 Circuit |
| " | 23033 | | | Plug, 9 Circuit |
| 8 | 35521 | | Not Available | CLIP, HARNESS HOLDER |
| 9 | 21036 | | | Clip, Cable |
| 10 | 26708 | | | Receptacle, 6 Circuit |
| " | 26301 | | | Receptacle, Molex |
| " | 26163 | | | Receptacle, 9 Circuit |

| | | | |
|----|--------|--------------------------|-------------------|
| 11 | Y00117 | 5011-XX | 093 Female Socket |
| 12 | 36466 | M0321209 | Tie-Electrical |
| 13 | 36274 | Not Available | CLIP, HARNESS |

