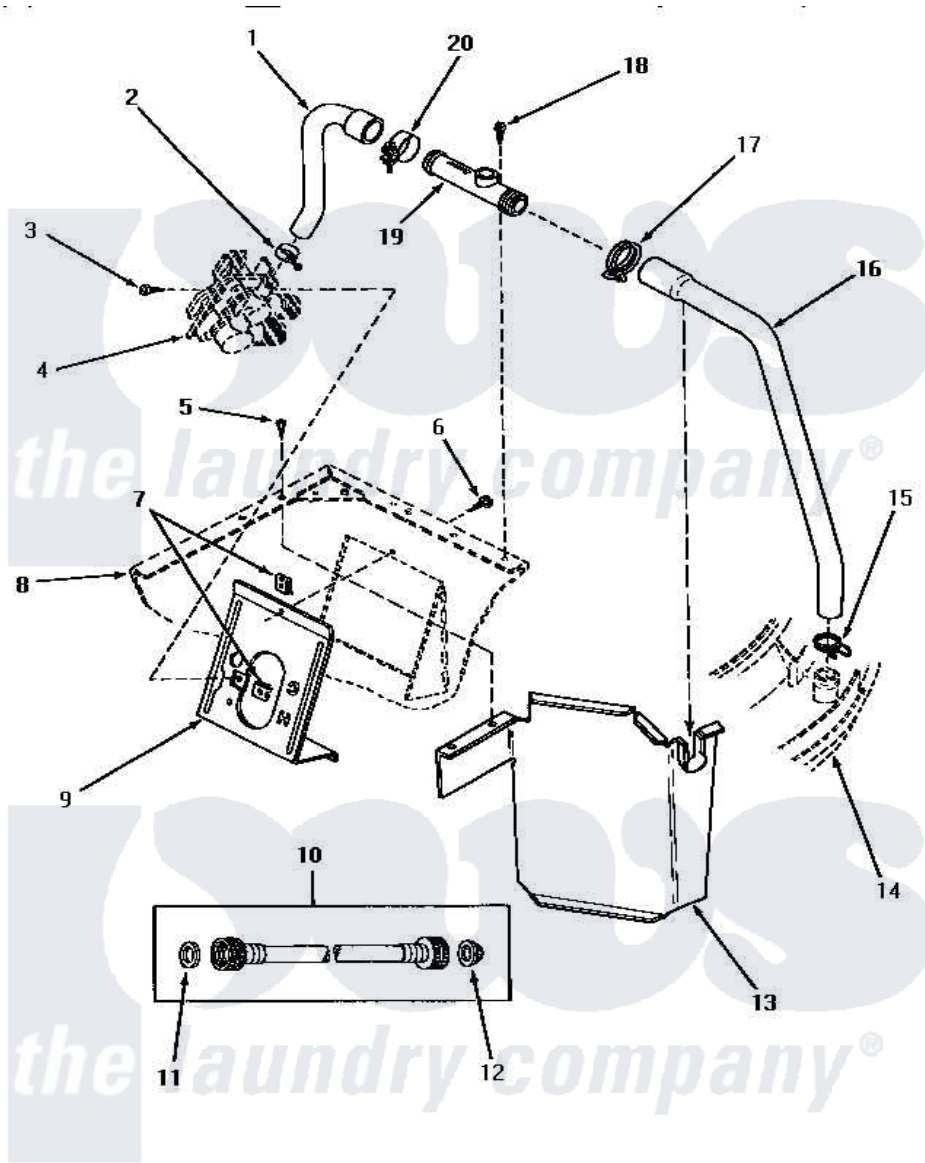


# Amana NA8531 08 - HOSES/BACK FL PREVENTER & VLV BRKT



## INLET HOSE, FILLER HOSE, BACK FLOW PREVENTER AND MIXING VALVE MOUNTING BRACKET

Amana [Residential Amana NA8531 Washer Parts](#) Parts Diagram 08 - HOSES/BACK FL PREVENTER & VLV BRKT  
 Click on the part number to view part

Item	Original Part Number	Replaced By	Status	Part Description
1	<a href="#">27183</a>			Hose, Mixing Valve
2	27643	<a href="#">596669</a>		Clamp, Manifold
3	56392		Not Available	SCREW,8-18 X 3/8 TAPPI
4	Y00000000		Not Available	SEE NOTE MIXING VALVE
5	33316	<a href="#">489464</a>		Screw
6	56392		Not Available	SCREW,8-18 X 3/8 TAPPI
7	<a href="#">54038</a>			NUt, Speed U-Type
8	Y00000000		Not Available	SEE NOTE CABINET
9	32837	<a href="#">39407</a>		Bracket, Valve
10	28330P	<a href="#">202860</a>		Inlet Hose Assembly
11	20290	<a href="#">Y013783</a>		Washer, Inlet Hose
12	28605	<a href="#">22002960</a>		Strainer, Washer Inlet
13	33098		Not Available	ENCLOSURE,MIXING VALVE
14	Y00000000		Not Available	SEE NOTE OUTER TUB COVER
15	<a href="#">29210</a>			Hose Clamp
16	<a href="#">31140</a>			Hose, Water Inlet

17	29176	<a href="#">285655</a>	Clamp, Hose
18	23962	<a href="#">W10116760</a>	Screw
19	27118	<a href="#">34280</a>	Assembly, Backflow Prevento
20	27152	Not Available	CLAMP HOSE

