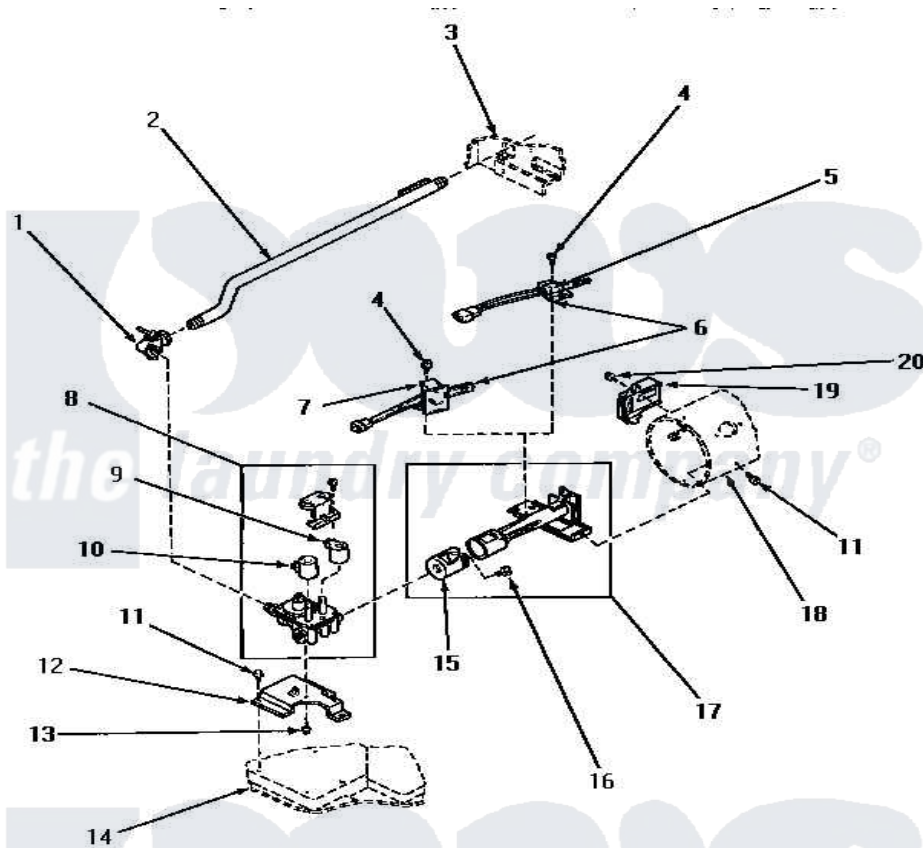


Amana NG5519 04 - GAS VALVE, IGNITER & GAS CONVERSION KITS



GAS BURNER CONVERSION KITS	
<p>TO CONVERT DRYERS FROM NATURAL/MIXED TO LP GAS</p> <p>401P3 Conversion Kit Kit consists of:</p> <ul style="list-style-type: none"> 1 - 58754 Block - Open Plug 1 - 5876S Burner Orifice Spud (#65) 1 - 60515 Conversion Plate 1 - 60517 Valve Converted to LP Gas Sticker 2 - 60520 LP Gas Stickers 	<p>TO CONVERT DRYERS FROM LP TO NATURAL/MIXED GAS</p> <p>402P3 Conversion Kit Kit consists of:</p> <ul style="list-style-type: none"> 1 - 58719 Burner Orifice Spud (#44) 1 - 58768 Vent Screw 1 - 60514 Conversion Plate 1 - 60516 Valve Converted to Natural Gas Sticker 2 - 60521 Natural Gas Stickers

GAS VALVE, IGNITER AND GAS CONVERSION KITS (Gas Models)

Amana [Residential Amana NG5519 Washer Parts](#) Parts Diagram 04 - GAS VALVE, IGNITER & GAS CONVERSION KITS

[Click on the part number to view part](#)

Item	Original Part Number	Replaced By	Status	Part Description
1	Y56229	510205		Valve-Elbo
2	58911			Assembly, Lead-In Pipe
3	Y00000000		Not Available	SEE NOTE CABINET
4	56693			Screw, No.6-20 x. 44/.41 In
5	Y00000000		Not Available	SEE NOTE CARBORUNDUM IGNITER AND BRACKET
6	60868	37001308		Ignitor
7	Y00000000		Not Available	SEE NOTE NORTON IGNITER AND BRACKET
8	58804			Assembly, Valve-Gas-Single-
9	58804B	694540		Coil, 60 Hz
10	58804A	306106		Coil, Holding And Booster-W
11	33562	27001200		Screw
12	58912	500821		Bracket, Mounting-Gas
13	56124	3370225		Screw
14	Y00000000		Not Available	SEE NOTE BASE

15	53007	53-007		Receptacle
16	51356		Not Available	SCREW,6-32 X 5/16 RD H
17	Y56234	37001304		Burner Ign
18	Y56234	37001304		Burner Ign
19	Y56231	338906		Radiant, Sensor
20	23222	3177991		Screw
NI	60517			Valve Converted To LP Gas Stic
"	58768	402P3		Kit, Conversion-NG
"	58719	402P3		Kit, Conversion-NG
"	60521		Not Available	STICKER,NG OR MIXED GAS
"	60516			Sticker, Valve Converted
"	60520		Not Available	STICKER,LP GAS
"	60515		Not Available	PLATE,CONVERSION
"	58755	401P3		Kit, Conversion-LP
"	58754	401P3		Kit, Conversion-LP
"	401P3			Kit, Conversion-LP
"	402P3			Kit, Conversion-NG
"	60514		Not Available	PLATE,CONVERSION

