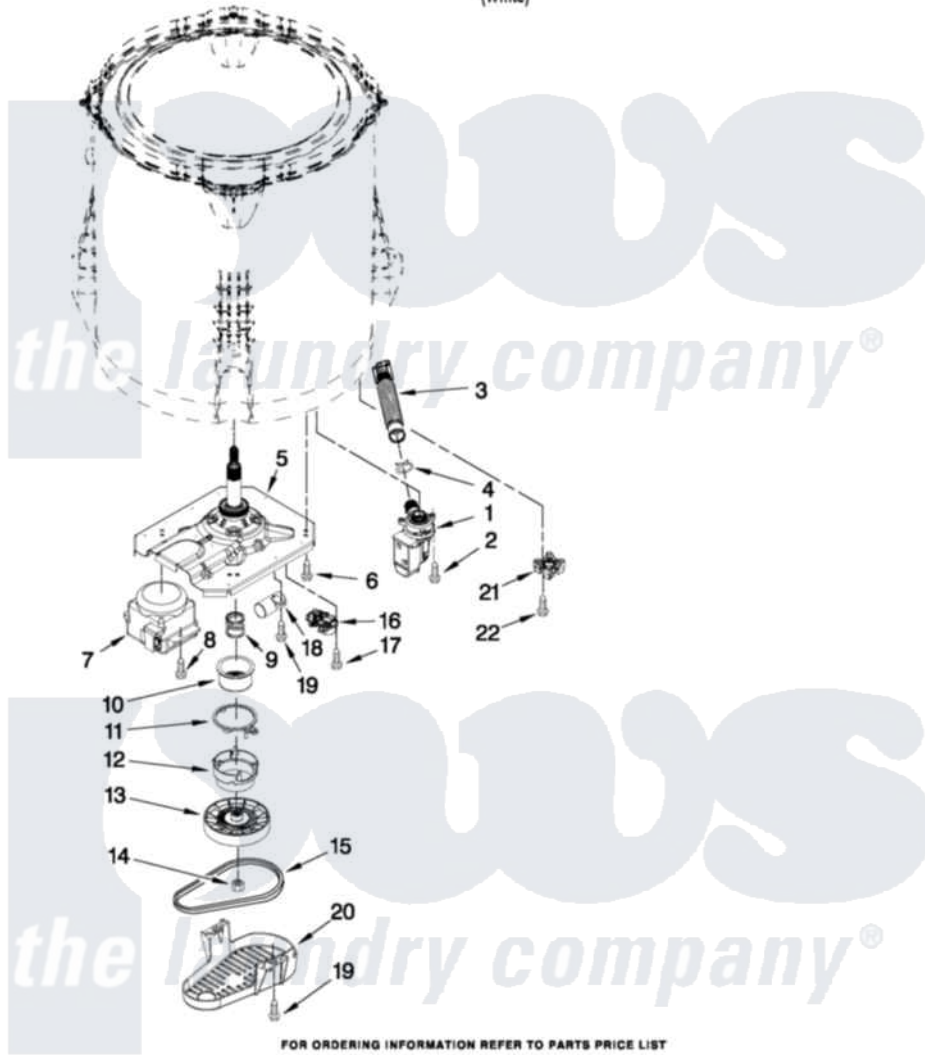


# Crosley CAW12444XW0 04 - GEARCASE, MOTOR AND PUMP PARTS

## GEARCASE, MOTOR AND PUMP PARTS

For Model: CAW12444XW0  
(White)



FOR ORDERING INFORMATION REFER TO PARTS PRICE LIST

6

W10364454

### Crosley Residential Crosley CAW12444XW0 Washer Parts Diagram 04 - GEARCASE, MOTOR AND PUMP PARTS

Click on the part number to view part

| Item | Original Part Number      | Replaced By               | Status | Part Description           |
|------|---------------------------|---------------------------|--------|----------------------------|
| 1    | <a href="#">W10276397</a> |                           |        | Pump Assembly, Drain       |
| 2    | <a href="#">W10004910</a> |                           |        | Screw, 12-16 X 1-1/4       |
| 3    | <a href="#">W10215091</a> |                           |        | Hose, Inner Drain Assembly |
| 4    | 8317496                   | <a href="#">285655</a>    |        | Clamp, Hose                |
| 5    | W10006379                 | <a href="#">W10324649</a> |        | Gearcase                   |
| 6    | <a href="#">W10249633</a> |                           |        | Screw, 7.2-1.6 X 30        |
| 7    | <a href="#">W10249628</a> |                           |        | Motor, Drive               |
| 8    | W10094780                 | <a href="#">W10182109</a> |        | Screw-Kit                  |
| 9    | W10006382                 | <a href="#">W10315818</a> |        | Cam                        |
| 10   | W10006352                 | <a href="#">W10315818</a> |        | Cam                        |
| 11   | W10006353                 | <a href="#">W10315818</a> |        | Cam                        |
| 12   | W10006354                 | <a href="#">W10315818</a> |        | Cam                        |
| 13   | <a href="#">W10006356</a> |                           |        | Pulley                     |
| 14   | <a href="#">W10163336</a> |                           |        | Nut, Pulley                |
| 15   | <a href="#">W10006384</a> |                           |        | Belt, Drive                |
| 16   | <a href="#">W10006355</a> |                           |        | Actuator, Shift            |

|    |                           |                      |
|----|---------------------------|----------------------|
| 17 | <a href="#">9741052</a>   | Screw, 6-32 X 1.00   |
| 18 | <a href="#">W10278117</a> | Capacitor, Motor Run |
| 19 | <a href="#">357640</a>    | Screw And Washer     |
| 20 | <a href="#">W10006383</a> | Shield, Pulley Cover |
| 21 | <a href="#">W10238318</a> | Counterweight        |
| 22 | <a href="#">W10238319</a> | Screw, 8-18 X 1.00   |

