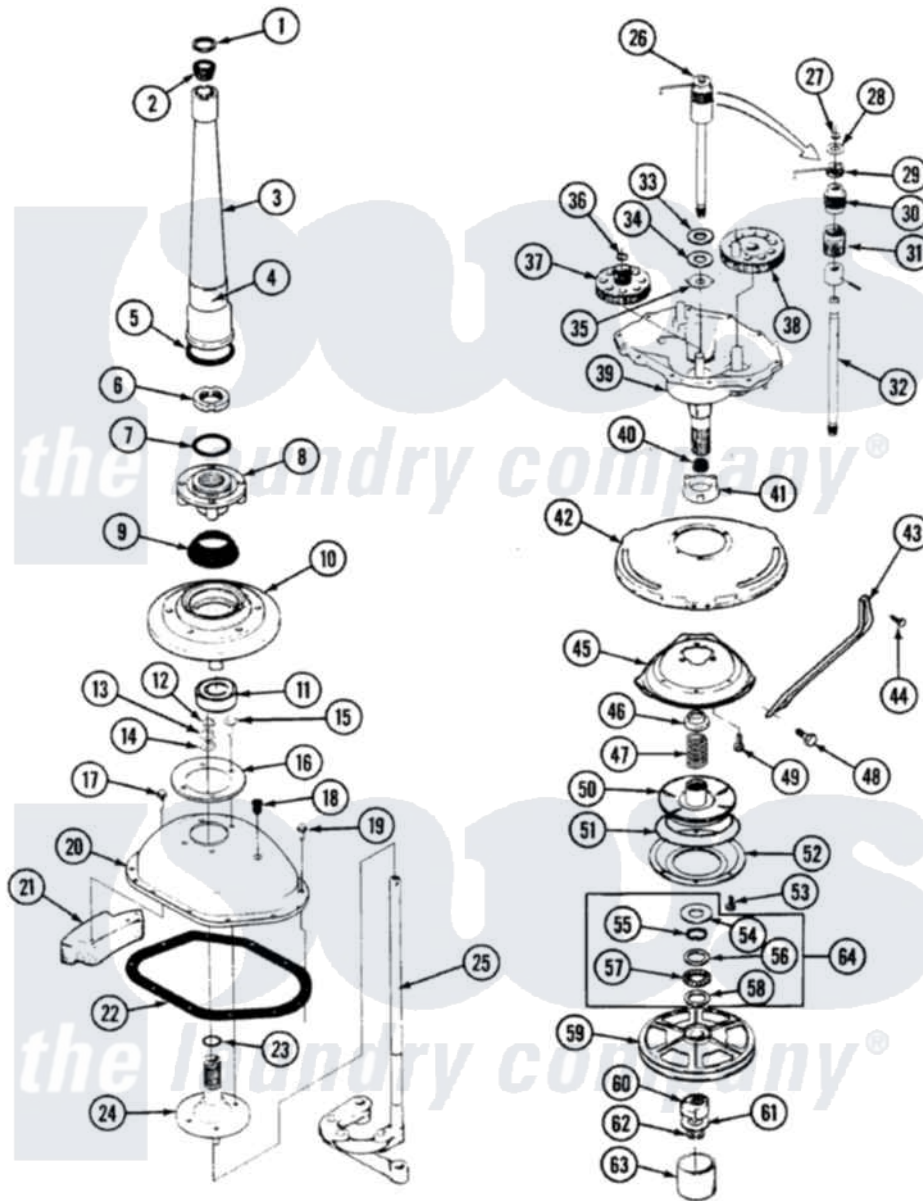


Hoover HWA2000A 04 - TRANSMISSION



Hoover [Residential Hoover HWA2000A Washer Parts](#) Parts Diagram 04 - TRANSMISSION
 Click on the part number to view part

| Item | Original Part Number | Replaced By | Status | Part Description |
|------|-------------------------|---------------------------|---------------|-----------------------------------|
| 1 | 25-7941 | | | "O" Ring, Agr Drive Shaft |
| 2 | 35-2835 | 21001066 | | Bearing, Centerpost |
| 3 | 35-2792 | 21001401 | | Center Pos |
| 4 | 33-6790 | | | Bearing, Agitator |
| " | 35-2983 | | Not Available | CENTERPOST ASSY. |
| 5 | 35-2906 | | | Seal, Centerpost Bottom |
| 6 | 35-2791 | | | Nut, Spin Tube |
| 7 | 25-7938 | | | "O" Ring, Basket Drive Hub |
| 8 | 35-3647 | W10219156 | | Tub Seal |
| " | 35-2715 | | Not Available | BASKET DRIVE HUB ASSY |
| 9 | 35-2974 | | | Tub Seal/Hub Assembly |
| 10 | 35-2716 | 12001561 | | Bearing And Seal Housing Assembly |
| 11 | 35-2972 | 12001561 | | Bearing And Seal Housing Assembly |
| " | 35-2205 | | | Bearing, Spin |
| 12 | 25-7940 | | Not Available | RING, RETAINING (AG. |

| | | | |
|----|-------------------------|--------------------------|-------------------------------|
| 12 | | Not Available | SHAFT) |
| 13 | 25-7057 | | Washer, Flat |
| 14 | 25-7051 | 25-7057 | Washer, Flat |
| 15 | 25-7895 | 21001858 | Screw 5/16-18 x 1/2 |
| 16 | 35-2981 | | Cover, Reinforcement |
| 17 | 25-7895 | 21001858 | Screw 5/16-18 x 1/2 |
| 18 | 35-2621 | | Plug, Oil Fill |
| 19 | 25-7926 | 25-7758 | Screw |
| 20 | 35-2971 | Not Available | TRANSMISSION COVER ASSY. |
| " | 35-2620 | Not Available | COVER, TRANSMISSION |
| 21 | 35-2903 | Not Available | COUNTERWEIGHT |
| 22 | 35-1030 | Not Available | GASKET, TRANSMISSION HOUSING |
| 23 | 25-7722 | 33-4293N | Gasket Kit |
| 24 | 35-2708 | 35-3702 | Drive Tube Assembly |
| " | 35-3702 | | Drive Tube Assembly |
| 25 | 35-3036 | 35-3804 | Linkage Assembly |
| " | 35-3804 | | Linkage Assembly |
| 26 | LA-2176 | Not Available | CLUTCH ASSY. |
| 27 | 25-7847 | | Ring, Retaining |
| 28 | 25-7416 | Not Available | WASHER, FLAT |
| " | 25-7415 | Not Available | WASHER, FLAT |
| 29 | 33-6114 | 33-6463 | Spring |
| 30 | 35-2001 | | Pinion, Drive |
| 31 | 33-3195 | Not Available | SPRING |
| 32 | 35-2692 | | Drive Shaft And Hub Assembly |
| 33 | 25-7274 | Not Available | WASHER, STEEL |
| 34 | 35-2817 | 35-3825 | Washer, Nylon |
| 35 | 35-2070 | | Washer, Steel W/Tabs |
| 36 | 25-7933 | | Ring, Retaining |
| 37 | 35-2527 | | Gear, Cluster |
| 38 | 35-2631 | Not Available | GEAR, CRANK |
| 39 | 35-2812 | Not Available | HOUSING, TRANSMISSION |
| 40 | 35-2010 | 207843 | Lip Seal Repair Kit |
| 41 | 35-2973 | 35-6680 | Transmission |
| " | 35-2730 | 12001562 | Bearing Assembly |
| 42 | 35-3724 | 21001518 | Support, Tub |
| " | 35-2732 | 21001518 | Support, Tub |
| 43 | 35-2798 | Not Available | TUB BRACE |
| 44 | 25-7930 | 21001858 | Screw 5/16-18 x 1/2 |
| 45 | 35-2015 | Not Available | SUSPENSION HOUSING |
| " | 35-3698 | Not Available | HOUSING, SUSPENSION |
| 46 | 35-2017 | | Retainer, Brake Spring |
| 47 | 35-2112 | 21001910 | Spring, Brake |
| 48 | 25-7930 | 21001858 | Screw 5/16-18 x 1/2 |
| " | 35-2025 | Not Available | PLATE, REINFORCEMENT |
| 49 | 25-7895 | 21001858 | Screw 5/16-18 x 1/2 |
| 50 | 35-2948 | 35-6714 | Brake Roto |
| 51 | 35-2357 | 21002026 | Snubber |
| 52 | 35-2018 | 35-6918 | Stator, Brake |
| 53 | 25-7900 | 21001065 | Screw, No.10-24 x .50 Hxnibhd |
| 54 | W10121350 | Not Available | NOT REQUIRED PART OR |

| | | | |
|----|-------------------------|--------------------------|-------------------------------|
| 54 | W10124350 | Not Available | SEE NOTE |
| 55 | W10124350 | Not Available | NOT REQUIRED PART OR SEE NOTE |
| 56 | W10124350 | Not Available | NOT REQUIRED PART OR SEE NOTE |
| 57 | W10124350 | Not Available | NOT REQUIRED PART OR SEE NOTE |
| 58 | W10124350 | Not Available | NOT REQUIRED PART OR SEE NOTE |
| 59 | 35-2683 | 12002213 | Thrust Bearing Kit |
| 60 | 35-2439 | 12002213 | Thrust Bearing Kit |
| 61 | 35-2132 | | Washer, 1.25ODX.530IDX.032 |
| " | 35-2082 | | Washer, 1.25ODX.530IDX.062 |
| 62 | 25-7854 | | Ring, Retaining |
| 63 | 35-2007 | | Cap, Dust |
| 64 | 12500036 | 12002213 | Thrust Bearing Kit |
| 65 | 35-3748 | 35-6680 | Transmission |

