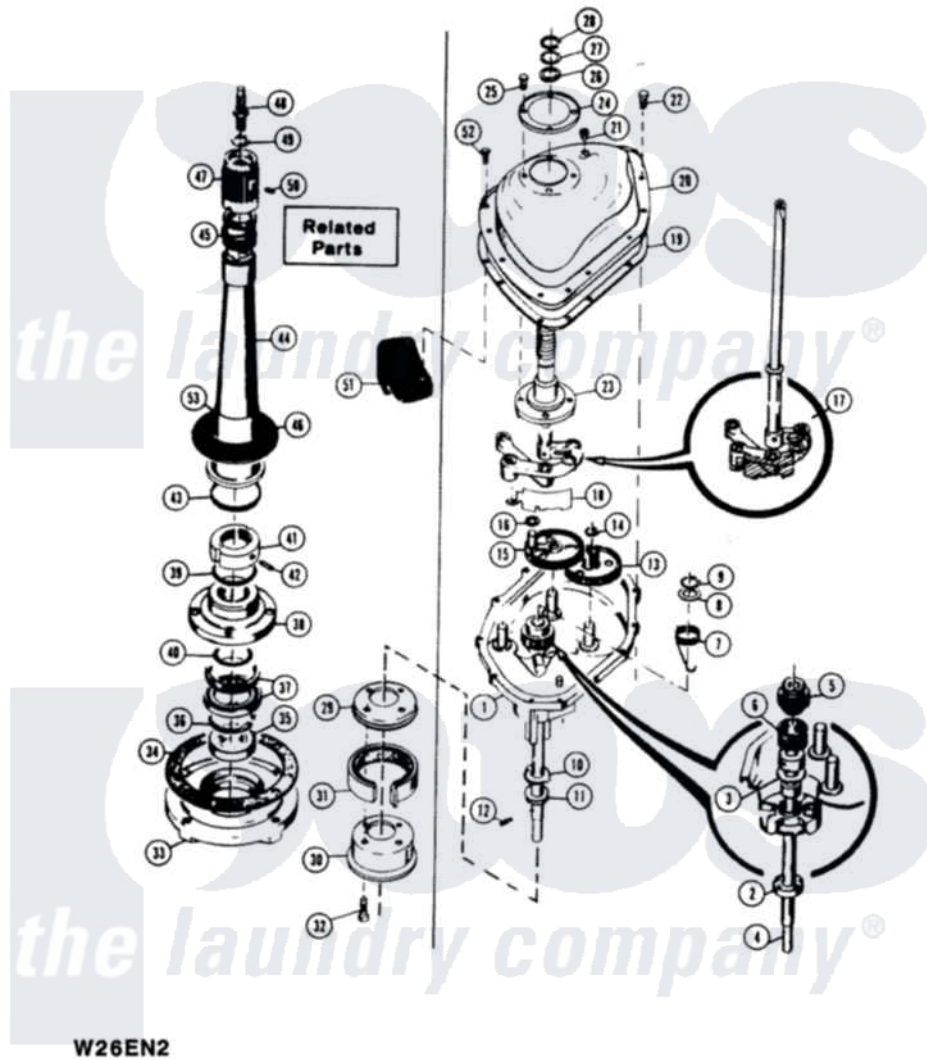


TRANSMISSION



W26EN2

E-3

Magic Chef Residential Magic Chef W26EA2 Washer Parts Parts Diagram 03 - TRANSMISSION  
 Click on the part number to view part

Item	Original Part Number	Replaced By	Status	Part Description
1	35-0630		Not Available	TRANSMISSION
"	33-9986		Not Available	TRANSM HOUSING
2	33-9208		Not Available	SEAL
3	25-7274		Not Available	WASHER, STEEL
"	33-9023N		Not Available	CLUTCH ASM
4	33-9022		Not Available	DRIVE SHAFT
5	33-6115		Not Available	DRIVE PINION
6	33-3195		Not Available	SPRING
7	<a href="#">33-6463</a>			Spring
8	25-7415		Not Available	WASHER, FLAT
9	25-7173		Not Available	25-7708
10	33-9217		Not Available	THRUST WASHER
11	<a href="#">33-4944</a>			Bearing
12	25-6120		Not Available	PIN
13	33-3228	<a href="#">35-0547</a>		Cluster Gear
14	25-7175	<a href="#">25-7933</a>		Ring, Retaining

15	33-5910	Not Available	GEAR CRANK
16	<a href="#">25-7091</a>		Thrust Washer
17	35-0628	<a href="#">35-3573</a>	Linkage As
18	25-7175	<a href="#">25-7933</a>	Ring, Retaining
19	<a href="#">33-4286N</a>		Transmission Cover Kit
"	33-9366	Not Available	COVER GASKET
20	33-7182	Not Available	TRANSM COVER
21	33-9373	Not Available	OIL FILL PLUG
22	<a href="#">25-7758</a>		Screw
23	33-8763	<a href="#">33-4286N</a>	Transmission Cover Kit
24	<a href="#">33-7187</a>		Covr Reinforcmt
25	25-7498	<a href="#">25-7359</a>	Screw
26	<a href="#">25-7057</a>		Washer, Flat
27	25-7051	<a href="#">25-7057</a>	Washer, Flat
28	LA-1000	Not Available	BRAKE KIT
"	25-7708	<a href="#">25-7848</a>	Retaining Ring
29	<a href="#">33-9984</a>		Retainer Plate
30	33-9983	Not Available	BRAKE HUB
31	33-9686	<a href="#">35-0483</a>	Band andl Lning Assembly
32	<a href="#">33-4282N</a>		Housing Kit
"	<a href="#">25-7399</a>		Screw
33	<a href="#">33-9522</a>		Bearing And Housing Assembly
34	33-9046	<a href="#">35-0929</a>	Gasket
35	33-0260	<a href="#">35-2205</a>	Bearing, Spin
36	25-7178	<a href="#">25-7849</a>	Retaining Ring
37	33-7224	<a href="#">33-7224N</a>	Tub Seal Assembly
38	33-9987	Not Available	BASKET HUB ASM
39	<a href="#">25-7749</a>		O Ring
40	25-7722	<a href="#">33-4293N</a>	Gasket Kit
41	<a href="#">33-9504</a>		Locknut
42	33-4283N	Not Available	CENTERPOST KIT
"	<a href="#">25-7120</a>		Set Screw
43	<a href="#">33-8718</a>		Gasket
44	33-9498	Not Available	CENTERPOST ASM
45	33-7806	<a href="#">33-7806N</a>	Seal Assembly
46	33-9047	<a href="#">35-0930</a>	Gasket
47	33-9729	Not Available	DRIVE BLOCK ASM
48	34-1248	<a href="#">33-6817</a>	Stud
49	<a href="#">25-7316</a>		Flat Washer
50	<a href="#">25-7378</a>		Set Screw
51	35-0013	Not Available	COUNTERWEIGHT
52	<a href="#">25-7359</a>		Screw
53	<a href="#">33-6790</a>		Bearing, Agitator
"	35-0466	<a href="#">21001415</a>	Gallon Of Oil