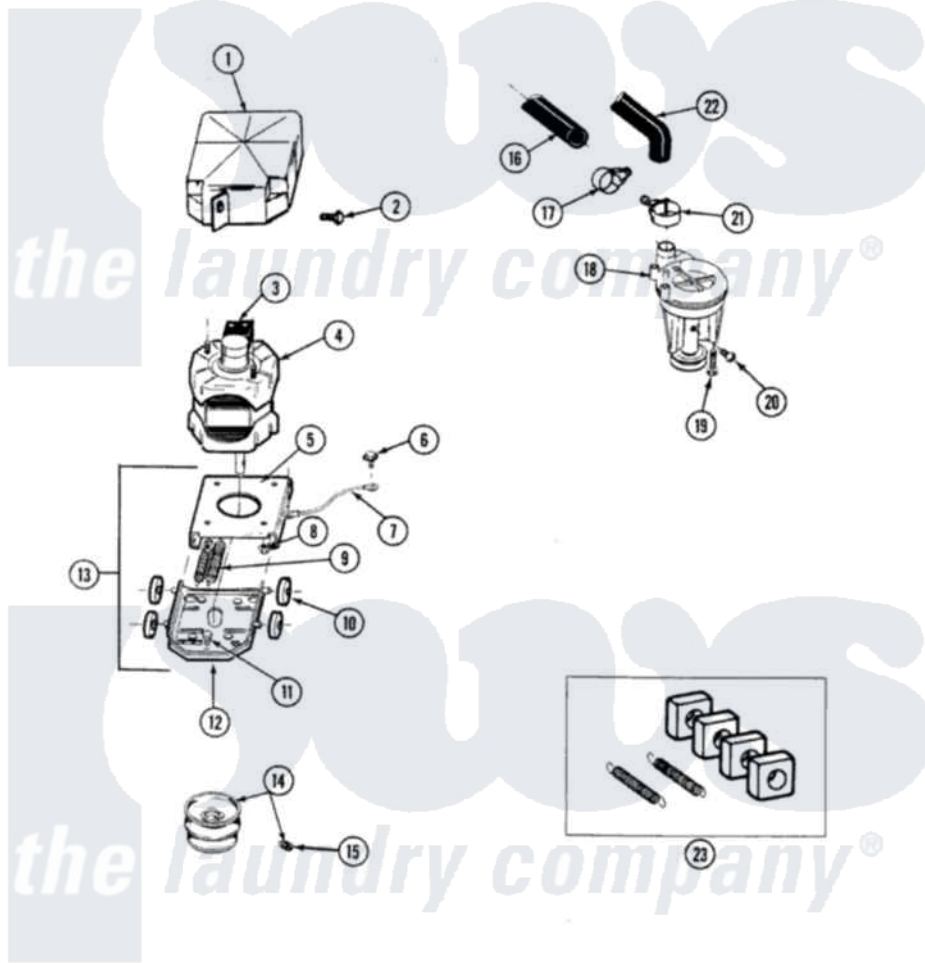


Maytag A8210 05 - MOTOR & PUMP ASSEMBLY

SECTION: MOTOR & PUMP ASSEMBLY
 MODEL: A8120 A8210

P/N 15000168



Issue Date: 5/91

18

Maytag [Residential Maytag A8210 Washer Parts](#) Parts Diagram 05 - MOTOR & PUMP ASSEMBLY
 Click on the part number to view part

Item	Original Part Number	Replaced By	Status	Part Description
1	215098			Shield, Motor
2	213121	3400111		Screw, 12-14 X 5/8
3	205133		Not Available	(PROD. IDNo. 2-1664-8 & 2-5463)
"	206505		Not Available	PROD. No.201664-15, & No.205463-3.
"	205132		Not Available	SWITCH, MOTOR EXTERNAL START No.201664-14,205463-4 & 201800-4
4	201805	12002351		Motor-Drive
5	214956			Motor Mount Assembly
6	210186	3370225		Screw
7	901220			Ground Wire
8	Y311426	3400029		Nut, Adapter Plate
9	202718			Springs, Tension
10	204998	205000		Roller And Spring Kit 4+Spr
11	Y313561			Screw----NA
12	205908			Motor Mount Assembly

13	205999		Motor Mount Assembly
14	200816	6-2008160	Pulley- MO
15	Y053241		Set Screw, Motor Pulley
16	214767	22001448	Hose, Pump
17	200461	285655	Clamp, Hose
18	202203	6-2022030	Pump As Pa
19	211880		Screw, HeX Head No.10 X 1/2 Inc
20	Y015408	22003235	Screw, Bearing Insert
21	202574	3367052	Clamp, Hose
22	Y212989		Hose, Outer Tub To Pump
23	205000		Roller And Spring Kit 4+Spr

the laundry company[®]

the laundry company[®]

the laundry company[®]