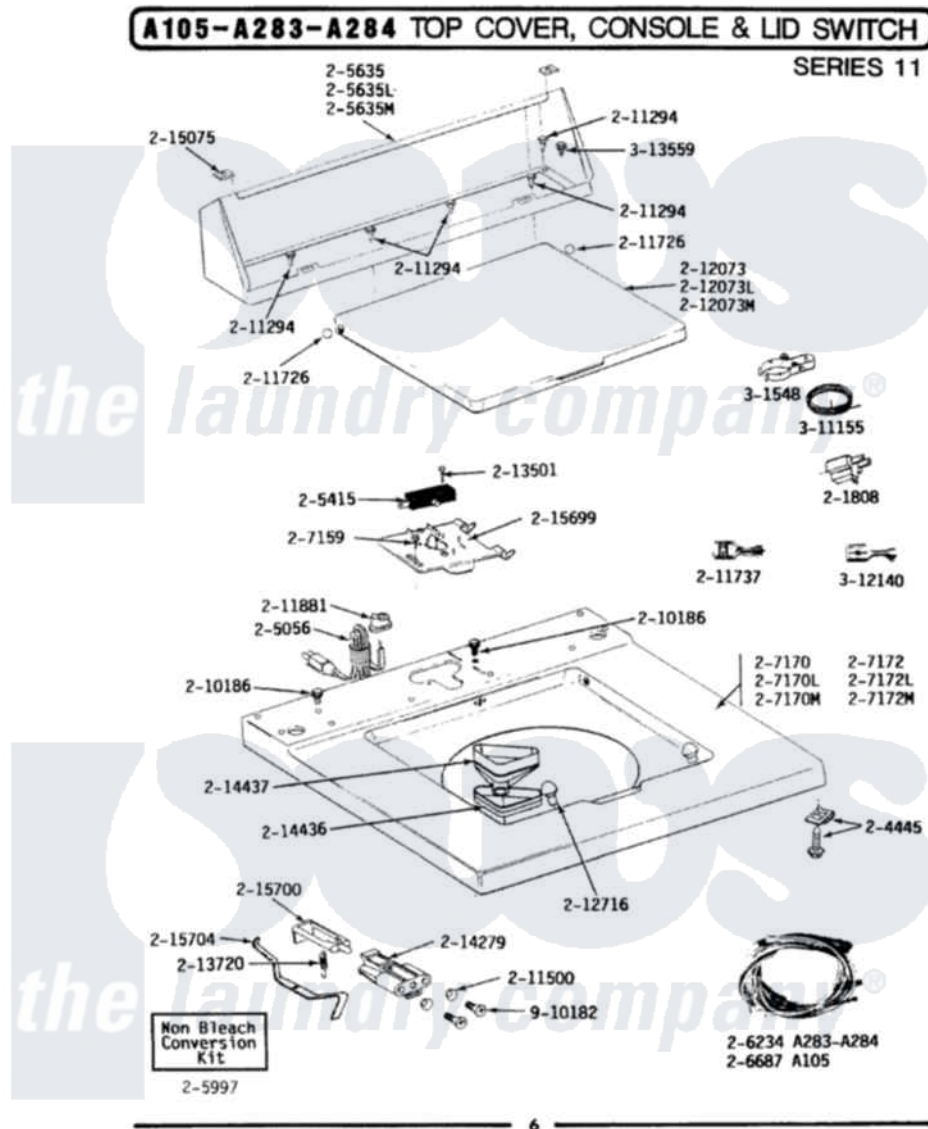


Maytag GA283 07 - TOP COVER, CONSOLE & LID SWITCH (SER 11)



Maytag Residential Maytag GA283 Washer Parts Parts Diagram 07 - TOP COVER, CONSOLE & LID SWITCH (SER 11)
 Click on the part number to view part

Item	Original Part Number	Replaced By	Status	Part Description
1	Y201808			Converter
2	204445			Screw And Fastener Assembly
3	205056	204590		Cord, Power
4	205415	279347		Switch-Lid
7	205635M		Not Available	CONSOLE (HVST WHEAT)
8	205997			Non-Bleach Conversion Kit
9	206234		Not Available	WIRE HARNESS
10	207159	489355		Screw, 8 X 1/2
13	207172M		Not Available	TOP COVER ASSY HVT WHEAT
14	210186	3370225		Screw
15	211294	90767		Screw, 8A X 3/8 HeX Washer Head Tapping
16	211500			Washer, Bracket To Top Cover
17	211726			Hinge, Ball Lid
18	211737	248562		Terminal
19	211881			Grommet, Cord Part Not Used-

19	211001		Gas Models Only
23	212073M	Not Available	LID-HARVEST WHEAT
24	212716		Bumper, Lid
25	213501		Screw, No.6-20 X 1-1/8 Inch
26	213720		Spring, Lid Switch
27	214279	204968	Plunger And Bracket Assembly--W
NI	215075		Fastener, Control Panel To Console
29	Y215699	22001678	Bracket, Switch And Fuse
30	215700	Not Available	LID SWITCH PLUNGER
31	215704		Lever, Unbalance
32	301548		Clamp, Ground Wire
33	311155		Ground Wire And Clamp
34	Y312140		Wire Connector
35	Y313559		Screw
36	910182	25-7809	Screw, No.6-20 1/2 Flthd Torx

