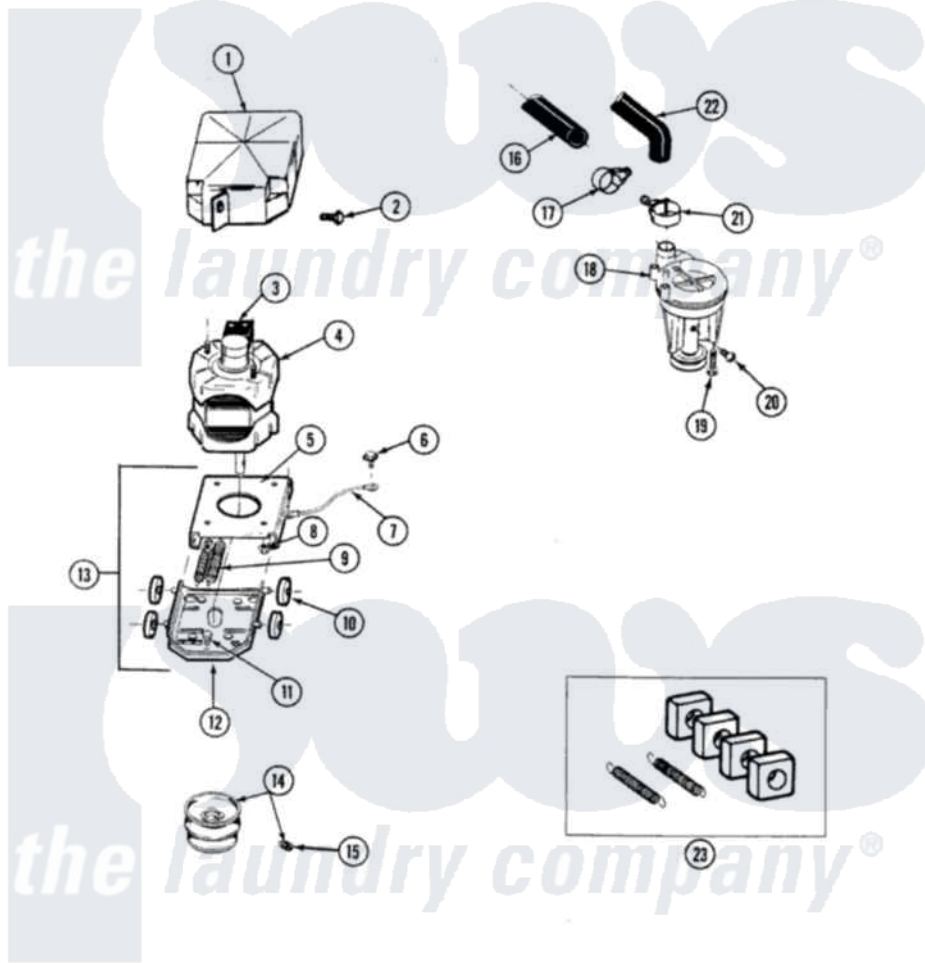


# Maytag GA8210 05 - MOTOR & PUMP ASSEMBLY

SECTION: MOTOR & PUMP ASSEMBLY  
 MODEL: A8120 A8210

P/N 15000168



Issue Date: 5/91

18

Maytag [Residential Maytag GA8210 Washer Parts](#) Parts Diagram 05 - MOTOR & PUMP ASSEMBLY  
 Click on the part number to view part

Item	Original Part Number	Replaced By	Status	Part Description
1	<a href="#">215098</a>			Shield, Motor
2	213121	<a href="#">3400111</a>		Screw, 12-14 X 5/8
3	205133		Not Available	(PROD. IDNo. 2-1664-8 & 2-5463)
"	206505		Not Available	PROD. No.201664-15, & No.205463-3.
"	205132		Not Available	SWITCH, MOTOR EXTERNAL START No.201664-14,205463-4 & 201800-4
4	201805	<a href="#">12002351</a>		Motor-Drive
5	<a href="#">214956</a>			Motor Mount Assembly
6	210186	<a href="#">3370225</a>		Screw
7	<a href="#">901220</a>			Ground Wire
8	Y311426	<a href="#">3400029</a>		Nut, Adapter Plate
9	<a href="#">202718</a>			Springs, Tension
10	204998	<a href="#">205000</a>		Roller And Spring Kit 4+Spr
11	<a href="#">Y313561</a>			Screw----NA
12	<a href="#">205908</a>			Motor Mount Assembly

13	<a href="#">205999</a>		Motor Mount Assembly
14	200816	<a href="#">6-2008160</a>	Pulley- MO
15	<a href="#">Y053241</a>		Set Screw, Motor Pulley
16	214767	<a href="#">22001448</a>	Hose, Pump
17	200461	<a href="#">285655</a>	Clamp, Hose
18	202203	<a href="#">6-2022030</a>	Pump As Pa
19	<a href="#">211880</a>		Screw, HeX Head No.10 X 1/2 Inc
20	Y015408	<a href="#">22003235</a>	Screw, Bearing Insert
21	202574	<a href="#">3367052</a>	Clamp, Hose
22	<a href="#">Y212989</a>		Hose, Outer Tub To Pump
23	<a href="#">205000</a>		Roller And Spring Kit 4+Spr

*the laundry company*<sup>®</sup>

*the laundry company*<sup>®</sup>

*the laundry company*<sup>®</sup>