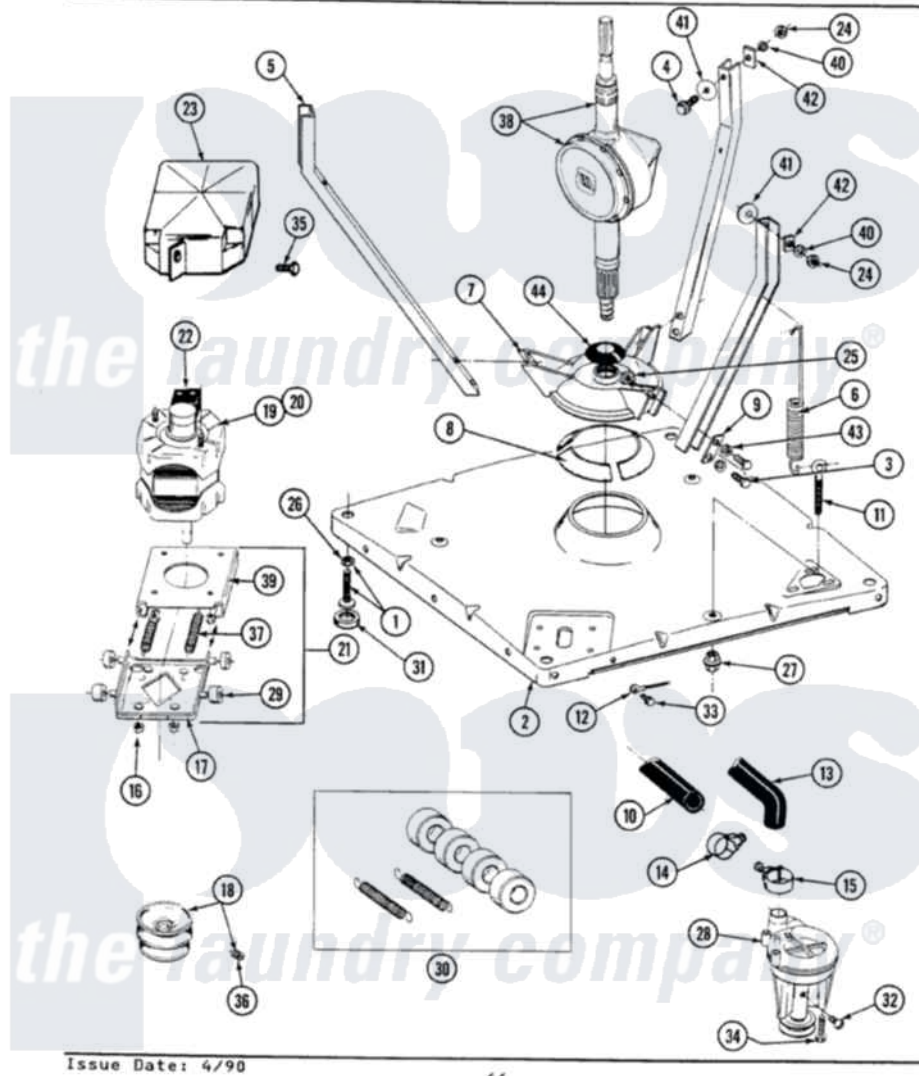


# Maytag GA8650 01 - BASE, PUMP, MOTOR & COMPONENTS

SECTION: BASE, PUMP, MOTOR & COMPONENTS  
 MODEL: ALL MODELS



Issue Date: 4/90

44

Maytag Residential Maytag GA8650 Washer Parts Parts Diagram 01 - BASE, PUMP, MOTOR & COMPONENTS  
 Click on the part number to view part

| Item | Original Part Number    | Replaced By               | Status | Part Description                     |
|------|-------------------------|---------------------------|--------|--------------------------------------|
| 1    | Y302699                 | <a href="#">22003428</a>  |        | Leg, Adjustable                      |
| 2    | <a href="#">203274</a>  |                           |        | Base With Damper Pads                |
| 3    | <a href="#">Y015627</a> |                           |        | Screw- Hex                           |
| 4    | 205254                  | <a href="#">W10175938</a> |        | Bolt                                 |
| "    | 200744                  | <a href="#">W10175939</a> |        | Bolt                                 |
| 5    | <a href="#">213053</a>  |                           |        | Brace, Tub Part Not Used             |
| 6    | <a href="#">213054</a>  |                           |        | Centering Spring - 3 Used            |
| 7    | <a href="#">203725</a>  |                           |        | Damper W/Bolt And Clip               |
| 8    | <a href="#">203956</a>  |                           |        | Damper Pad Kit                       |
| 9    | <a href="#">213073</a>  |                           |        | Washer, Double Brace                 |
| 10   | 214767                  | <a href="#">22001448</a>  |        | Hose, Pump                           |
| 11   | 213120                  | <a href="#">216416</a>    |        | Bolt, Eye/Centering Spring           |
| 12   | <a href="#">204807</a>  |                           |        | Ground Wire, Supp. Plte To Top Cover |
| 13   | <a href="#">213045</a>  |                           |        | Hose, Outer Tub Part Not Used        |
| 14   | 200461                  | <a href="#">285655</a>    |        | Clamp, Hose                          |

|    |                         |                           |               |   |
|----|-------------------------|---------------------------|---------------|---|
| 15 | 202574                  | <a href="#">3367052</a>   |               | Clamp, Hose   |
| 16 | 311246                  |                           | Not Available | KEPS NUT-MOTOR BASE   |
| 17 | <a href="#">205908</a>  |                           |               | Motor Mount Assembly  |
| 18 | 200816                  | <a href="#">6-2008160</a> |               | Pulley- MO  |
| 19 | 201805                  | <a href="#">12002351</a>  |               | Motor-Drve  |
| 20 | 201807                  | <a href="#">12002353</a>  |               | Motor-Drve  |
| 21 | <a href="#">205999</a>  |                           |               | Motor Mount Assembly  |
| 22 | 205133                  |                           | Not Available | (PROD. IDNo. 2-1664-8 & 2-5463)                               |
| "  | 205134                  |                           | Not Available | MOTOR EXTERNAL START SWITCH                                   |
| "  | 205132                  |                           | Not Available | SWITCH, MOTOR EXTERNAL START No.201664-14,205463-4 & 201800-4 |
| "  | <a href="#">206504</a>  |                           |               | Motor External Start Switch                                   |
| "  | 206505                  |                           | Not Available | PROD. No.201664-15, & No.205463-3.                            |
| "  | <a href="#">205131</a>  |                           |               | Switch, Motor External Start                                  |
| 23 | <a href="#">215098</a>  |                           |               | Shield, Motor   |
| 24 | <a href="#">Y052734</a> |                           |               | Nut, Carrage Bolts And Bracket                                |
| 25 | <a href="#">Y052785</a> |                           |               | Nut, Brace To Damper  |
| 26 | <a href="#">210385</a>  |                           |               | Lock Nut For Adjustable Leg                                   |
| 27 | <a href="#">211949</a>  |                           |               | Nut, Adjustment Eyebolt                                       |
| 28 | 202203                  | <a href="#">6-2022030</a> |               | Pump As Pa  |
| 29 | 204998                  | <a href="#">205000</a>    |               | Roller And Spring Kit 4+Spr                                   |
| 30 | <a href="#">205000</a>  |                           |               | Roller And Spring Kit 4+Spr                                   |
| 31 | <a href="#">210684</a>  |                           |               | Foot, Adjustable Leg  |
| 32 | Y015408                 | <a href="#">22003235</a>  |               | Screw, Bearing Insert   |
| 33 | 210186                  | <a href="#">3370225</a>   |               | Screw   |
| 34 | <a href="#">211880</a>  |                           |               | Screw, HeX Head No.10 X 1/2 Inc                               |
| 35 | 213121                  | <a href="#">3400111</a>   |               | Screw, 12-14 X 5/8  |
| 36 | <a href="#">Y053241</a> |                           |               | Set Screw, Motor Pulley                                       |
| 37 | <a href="#">202718</a>  |                           |               | Springs, Tension  |
| 38 | 206707                  | <a href="#">6-2097750</a> |               | Trans Dee   |
| 39 | <a href="#">214956</a>  |                           |               | Motor Mount Assembly  |
| 40 | <a href="#">Y054867</a> |                           |               | Washer, Lock  |
| 41 | <a href="#">211100</a>  |                           |               | Washer, Outer Tub   |
| 42 | 212979                  |                           | Not Available | WASHER, TUB BRACE   |
| 43 | 911852                  | <a href="#">486009</a>    |               | Lockwasher  |
| 44 | 211028                  | <a href="#">22001586</a>  |               | Deflector, Water  |