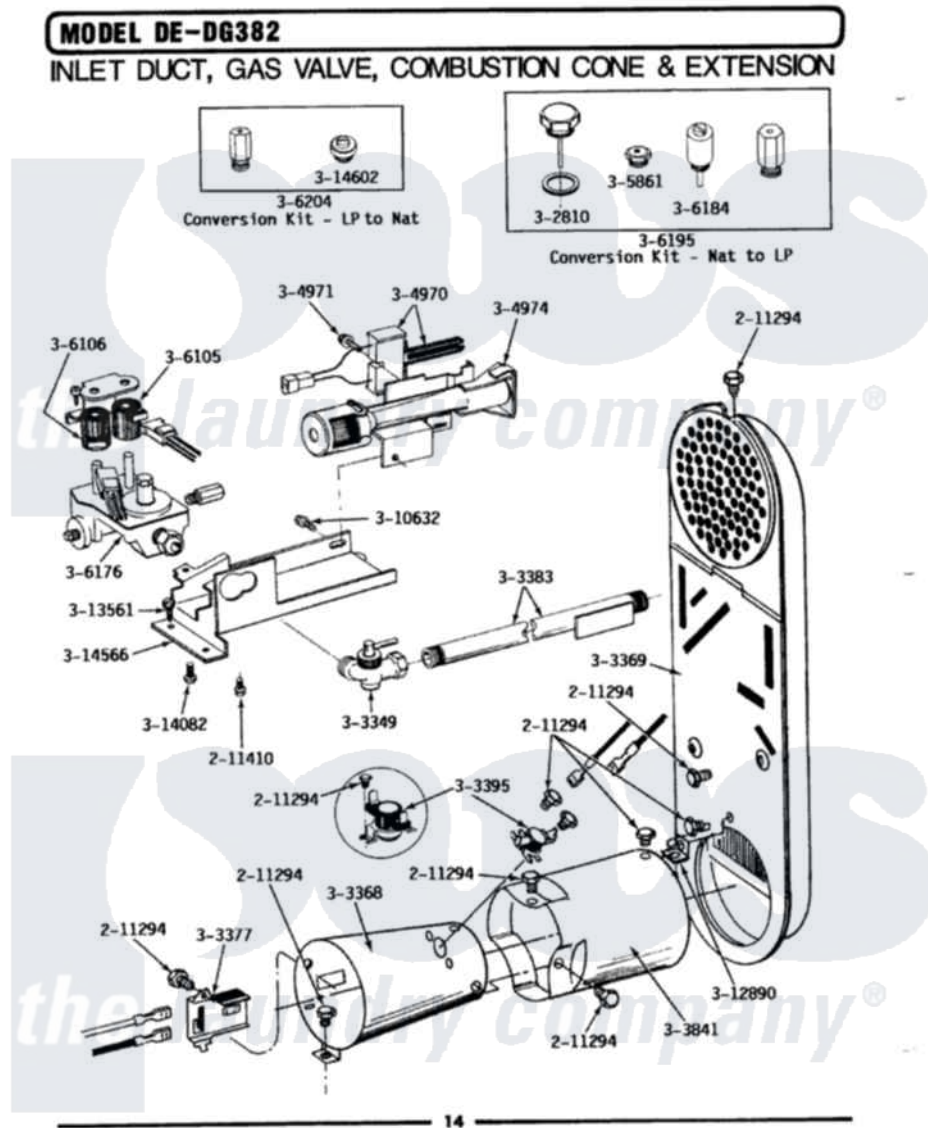


Maytag GDG382 04 - INLET DUCT, GAS VALVE, CONE & EXTENSION



Maytag Residential Maytag GDG382 Dryer Parts Parts Diagram 04 - INLET DUCT, GAS VALVE, CONE & EXTENSION
 Click on the part number to view part

Item	Original Part Number	Replaced By	Status	Part Description
1	211294	90767		Screw, 8A X 3/8 HeX Washer Head Tapping
2	211410			Screw, HeX Head No.8 X 3/8 Inch
3	302810			Screw Assembly - Blue Block Ope
4	Y303349			Angle Shut-Off, Gas Valve
5	Y303368			Cone, Combustion
6	Y303369			Inlet Duct Assembly
7	Y303377	338906		Radiant, Sensor
8	Y303383	33001735		Pipe And Bracket Assembly Series 18 Not Needed Use Vavle
9	303395			Thermostat, Hi-Limit
10	Y303841			Cone, Extension
11	304970	4391996		Ignitor
12	304971			Screw Note: Screw, Igniter
13	304974	33002793		Burner Assembly

14	305861		Not Available	MAIN BURNER ORIFICE KIT-LPG
15	306105	694540		Coil, 60 Hz
16	306106			Coil, Holding And Booster--W
17	306176			Valve, Gas
18	306184		Not Available	PLUG, BLOCKING (LPG REGULATOR)
19	Y306195	MAL9000AXX		LP Gas Con
20	306204	33002924		Gas Conv K
21	Y310632	1163839		Screw
22	Y312890			Retainer, Heater Chamber
23	Y313561			Screw---NA
24	314082	90767		Screw, 8A X 3/8 HeX Washer Head Tapping
25	314566			Gas Control Bracket
26	314602	694424		Leak, Limiter

