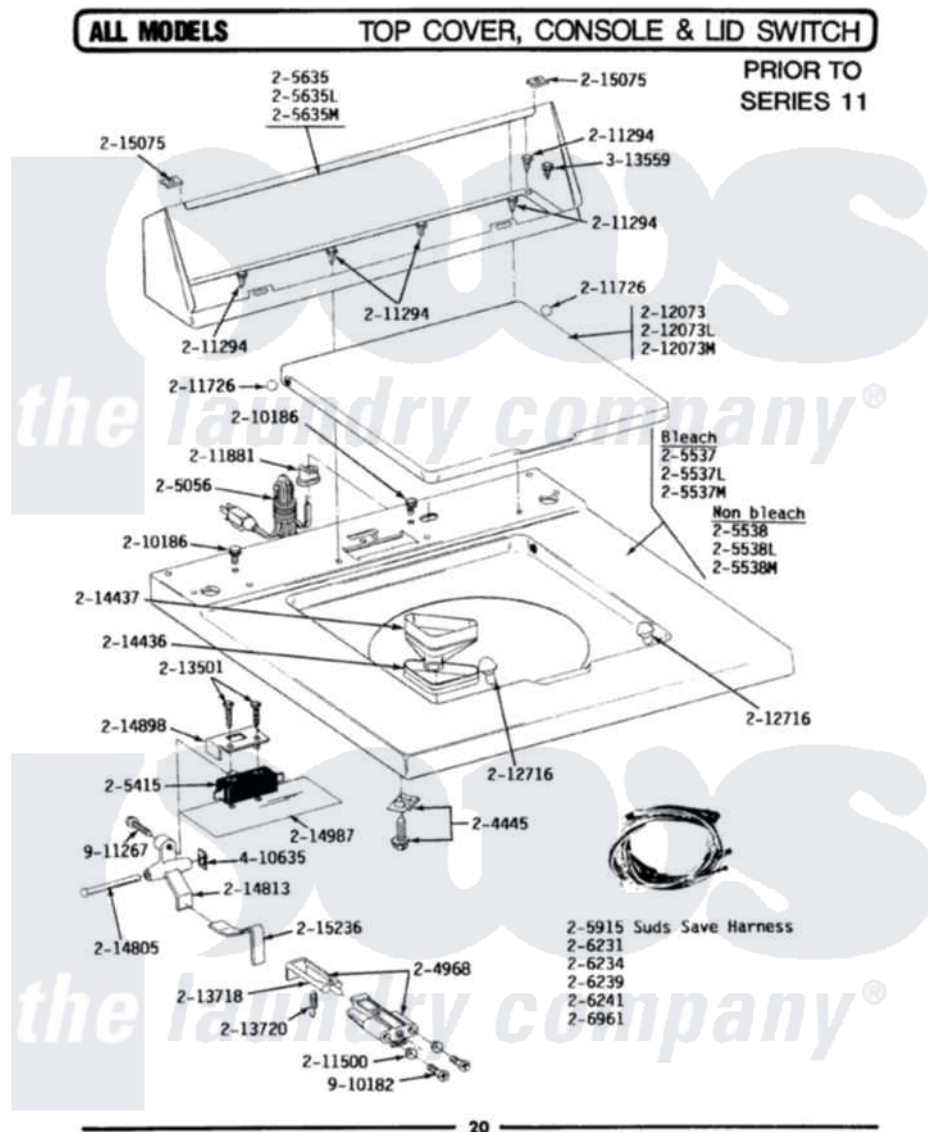


Maytag LA112 06 - TOP COVER, CONSOLE & LID SWITCH



Maytag Residential Maytag LA112 Washer Parts Parts Diagram 06 - TOP COVER, CONSOLE & LID SWITCH
 Click on the part number to view part

Item	Original Part Number	Replaced By	Status	Part Description
1	Y201808			Converter
2	204445			Screw And Fastener Assembly
3	204968			Plunger And Bracket Assembly--W
4	205056	204590		Cord, Power
5	205415	279347		Switch-Lid
9	205538L		Not Available	TOP COVER-ALMOND
11	205635L		Not Available	CONSOLE (ALM)
13	205997			Non-Bleach Conversion Kit
16	206239		Not Available	WIRE HARNESS
19	210186	3370225		Screw
20	211294	90767		Screw, 8A X 3/8 HeX Washer Head Tapping
21	211500			Washer, Bracket To Top Cover
22	211726			Hinge, Ball Lid
23	211737	248562		Terminal
24	211881			Grommet, Cord Part Not Used-

24	211001		Gas Models Only
26	212073L	Not Available	LID-ALMOND
27	212716		Bumper, Lid
28	213501		Screw, No.6-20 X 1-1/8 Inch
29	213718		Plunger, Lid Switch
30	213720		Spring, Lid Switch
32	214805		Pin For Unbalance Lever
33	214813	Not Available	LEVER FOR LID SWITCH
34	214898		Cover For Lid Switch
35	214987		Moisture Barrier For Switch
36	215075		Fastener, Control Panel To Console
37	215236	214804	Unbalance Lever
39	215578		Bleach Inlet Almond
41	215580		Cup, Bleach
42	301548		Clamp, Ground Wire
43	311155		Ground Wire And Clamp
44	Y312140		Wire Connector
45	Y313559		Screw
46	410635		Fastener
47	910182	25-7809	Screw, No.6-20 1/2 Flthd Torx
48	911267		Screw, Pump Cover

