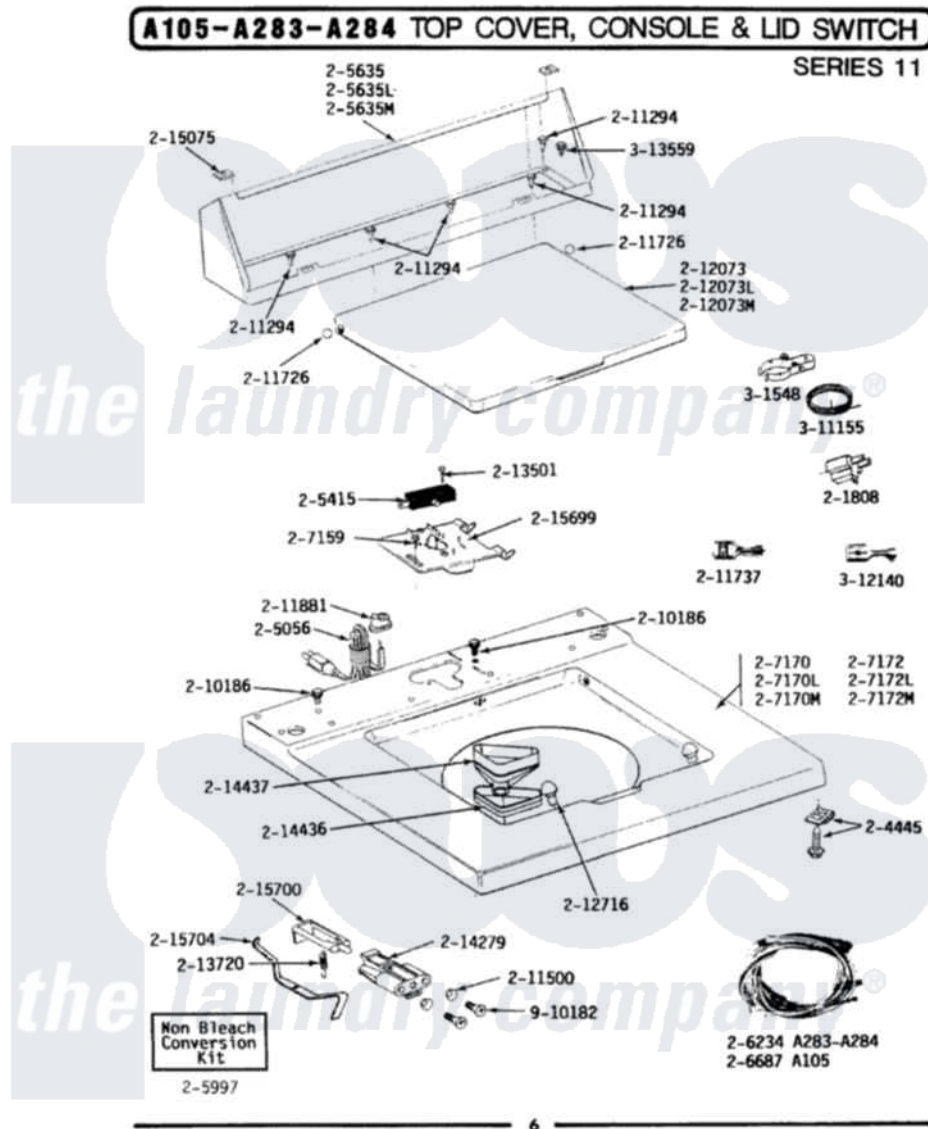


# Maytag LA283 07 - TOP COVER, CONSOLE & LID SWITCH (SER 11)



Maytag Residential Maytag LA283 Washer Parts Parts Diagram 07 - TOP COVER, CONSOLE & LID SWITCH (SER 11)  
 Click on the part number to view part

Item	Original Part Number	Replaced By	Status	Part Description
1	<a href="#">Y201808</a>			Converter
2	<a href="#">204445</a>			Screw And Fastener Assembly
3	205056	<a href="#">204590</a>		Cord, Power
4	205415	<a href="#">279347</a>		Switch-Lid
6	205635L		Not Available	CONSOLE (ALM)
8	<a href="#">205997</a>			Non-Bleach Conversion Kit
9	206234		Not Available	WIRE HARNESS
10	207159	<a href="#">489355</a>		Screw, 8 X 1/2
12	<a href="#">207172L</a>			Top Cover Assembly ALM---NA
14	210186	<a href="#">3370225</a>		Screw
15	211294	<a href="#">90767</a>		Screw, 8A X 3/8 HeX Washer Head Tapping
16	<a href="#">211500</a>			Washer, Bracket To Top Cover
17	<a href="#">211726</a>			Hinge, Ball Lid
18	211737	<a href="#">248562</a>		Terminal
19	<a href="#">211881</a>			Grommet, Cord Part Not Used-

19	<a href="#">211001</a>		Gas Models Only
21	212073L	Not Available	LID-ALMOND
24	<a href="#">212716</a>		Bumper, Lid
25	<a href="#">213501</a>		Screw, No.6-20 X 1-1/8 Inch
26	<a href="#">213720</a>		Spring, Lid Switch
27	214279	<a href="#">204968</a>	Plunger And Bracket Assembly--W
28	<a href="#">215075</a>		Fastener, Control Panel To Console
29	Y215699	<a href="#">22001678</a>	Bracket, Switch And Fuse
30	215700	Not Available	LID SWITCH PLUNGER
31	<a href="#">215704</a>		Lever, Unbalance
32	<a href="#">301548</a>		Clamp, Ground Wire
33	<a href="#">311155</a>		Ground Wire And Clamp
34	<a href="#">Y312140</a>		Wire Connector
35	<a href="#">Y313559</a>		Screw
36	910182	<a href="#">25-7809</a>	Screw, No.6-20 1/2 Flthd Torx

